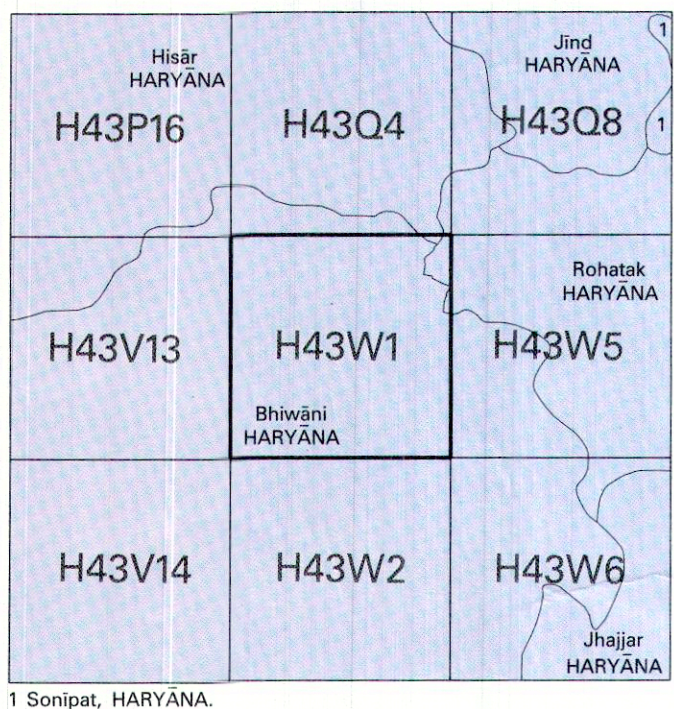


No. H43W1  
Scale 1:50,000



भारतीय सर्वेक्षण विभाग  
SURVEY OF INDIA

1st Edition 2006. Price : Rs. 50/-

CONVENTIONAL SYMBOLS

- Express highway: with toll; with bridge; with distance stone  
Roads, metalled: according to importance  
Roads, double carriageway: according to importance  
Unmetalled road: Cart-track, Puccin-track with pass, Foot-path  
Streams: with track in bed, undefined, Canal  
Dams: masonry or rock-filled; earthwork, Well  
River: dry with water channel; with island & rocks, Tidal river  
Submerged rocks, Shoal, Swamp, Reeds  
Wells: lined, unlined, Tube-well, Spring, Tanks: perennial, dry  
Embankments: road or rail; tank, Broken ground  
Railways, broad gauge: double, single with station; under constr.  
Railways, other gauges: double, single with distance stone  
Mineral line or tramway, Kils, Cutting with tunnel  
Contours with sub-features, Rocky slopes, Cliffs  
Sand features: (Tidal, 2) Sand-hills (permanent), (3) dunes (shifting)  
Towns or Villages: inhabited, deserted, Fort  
Huts: permanent, temporary, Tower, Antiquities  
Temple, Chhatri, Church, Mosque, Idgah, Tomb, Graves  
Lighthouse, Lightship, Buoys: lighted, unlighted, Anchorage  
Mine, Vine on trellis, Grass, Scrub  
Palms: palms; other, Plantain, Conifer, Bamboo, Other trees  
Areas: cultivated, wooded, Surveyed tree  
Boundary, international  
state, demarcated, undemarcated  
district, subdivision, taluk or taluk forest  
Pillars: surveyed, unlocated; village, junction  
Heights, triangulated: station, point, approximate  
Bench-mark: geodetic, tertiary, canal  
Post office, Telegraph office, Overhead tank  
Rest house or inspection bungalow, Circuit house, Police station  
Camping ground, Forest: reserved, protected  
Spaced names: administrative, locality or tribal  
Hospital, Dispensary, Veterinary hospital  
Aerodrome, Helipad, Tourist site  
Power line: with pylons surveyed; with poles unsurveyed

REFERENCE

NH 10 National Highway No. 10

NOTES :-

Heights in metres and above Indian mean sea level.  
Contours are approximate.  
A relative height, e.g. 3r, represents the approximate height, in metres, between the top and bottom of a steep slope.  
Important government buildings are shown in black with names.  
Tanks shown dry, in this area usually contain water from July to December.  
Tube-wells are numerous throughout the sheet, only the important ones have been shown.  
Unmetalled roads and cart-tracks in this sheet are generally motorable in dry season. Permission to use those along canals is required from the irrigation authorities.

COMPILATION INDEX

A. Surveyed during 1990-91. Updated for major details during 2005-06.

Projection - UTM Datum - WGS 84

Magnetic Variation from True North about 4° East in 2000.  
(increasing by about 2' annually)

1:50,000

Metres 1000 500 0 1 2 3 Kilometres

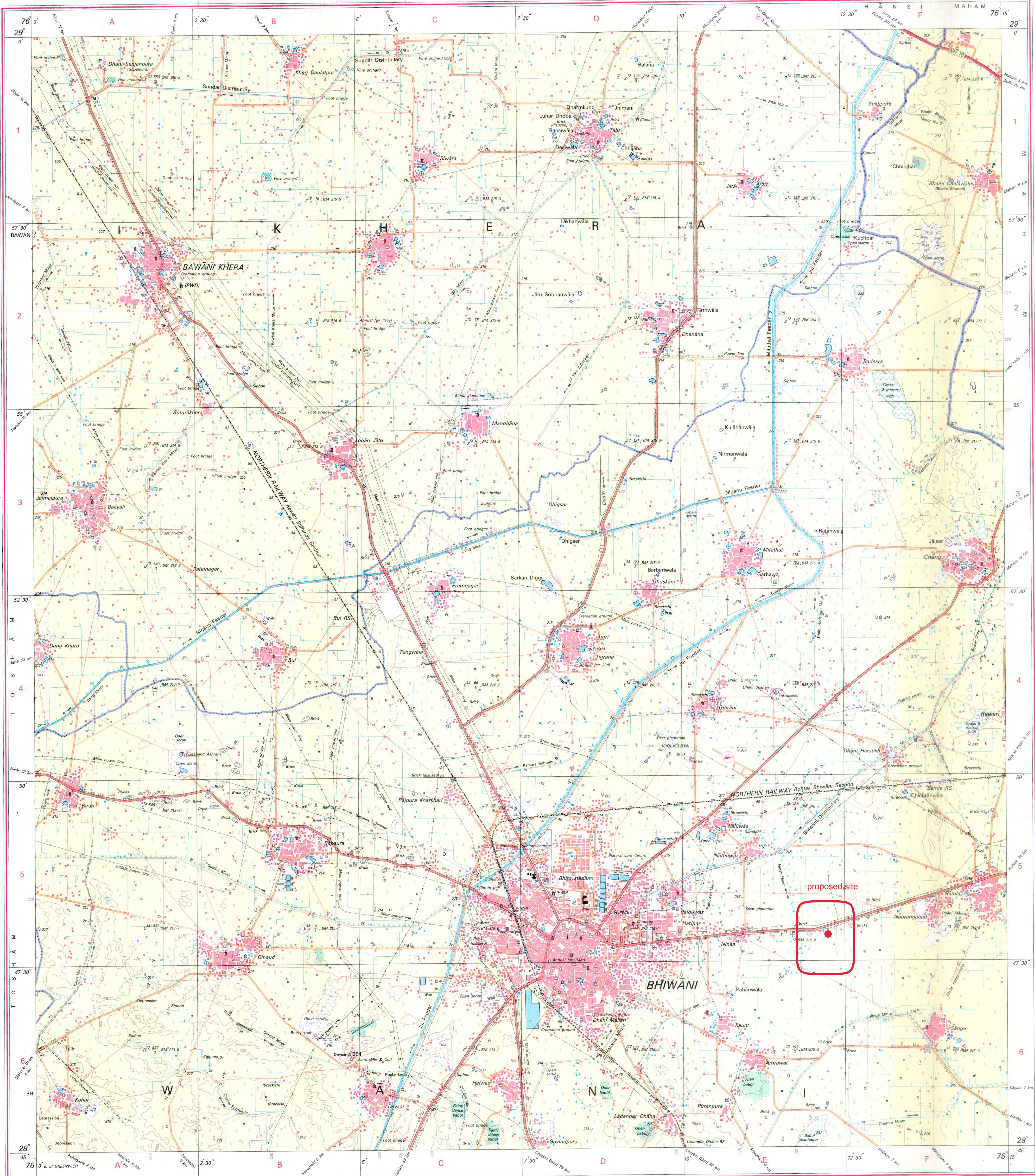
CONTOUR INTERVAL 10 METRES

For further details about this map, please contact  
Director  
Haryana Geo-Spatial Data Centre  
Survey of India, Sector 32 A  
Chandigarh.  
Fax : 0172 - 2604671

WEBSITE - www.surveyofindia.gov.in

Reproduction in whole or part by any means is prohibited  
without the written permission of Survey of India, the  
National Mapping Agency.

GOVERNMENT OF INDIA COPYRIGHT, 2006.



REG. No. J.R. (C)-WPG D. 06 (Haryana GOC-1-50,000). 1510.

भारत के नक्काशेक नेमर जनरल एम गोपाल राव, बी.टेक. पी. जे. डि. (एरियल फोटो), एम.आर.एम.एम.डी, एम.एल.एम.डी, एम.आर.एम.एम.डी, के विभाग में प्रकाशित,  
Published under the direction of Major General M. Gopal Rao, B.Tech., P.G.Dip. (Aerial Photo), MIME, MCA, FIS, Surveyor General of India,  
Survey of India, Hathiabarkala Estate, Post Box No. 37, Dehra Dun - 248001 (Uttaranchal)  
Department of Science & Technology, Government of India.

PRINTED AT THE WESTERN PRINTING GROUP OF SURVEY OF INDIA.