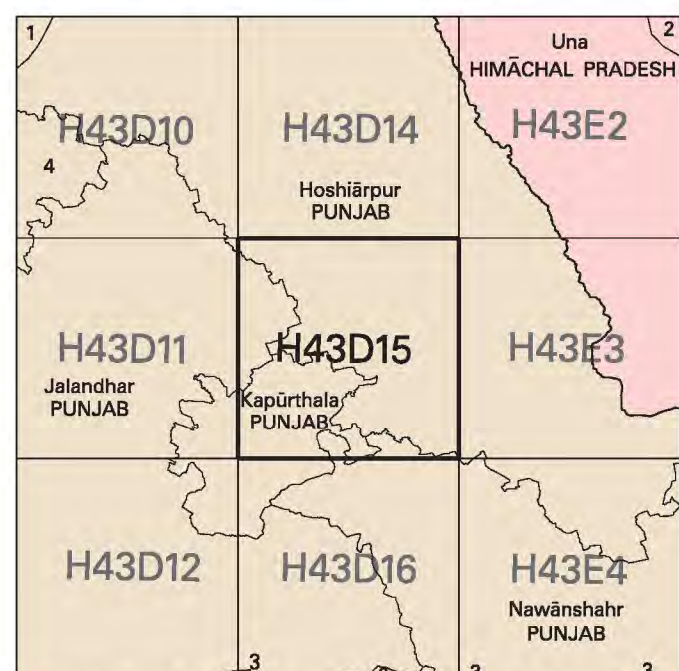


NOT FOR EXPORT

OPEN SERIES
MAP

No. H43D15

Scale 1:50,000



1 Gurdāspur, PUNJAB.	3 Ludhiāna, PUNJAB.
2 Kangra, HIMĀCHAL PRADESH.	4 Kapūrthala, PUNJAB.

भारतीय सर्वेक्षण विभाग

SURVEY OF INDIA

1st Edition 2007.

Price : Rs. 50 /-

CONVENTIONAL SYMBOLS

Express highway; with toll; with bridge; with distance stone					20
Roads, metalled: according to importance					
Roads, double carriageway, according to importance					
Unsettled road: cut-track, foot-track; with stone. Foot-path					
Stream: with track in bed; undefined, Canal					
Dams: masonry or rock-filled; earthwork. Water					
River; dry with water channel; with island & rocks. Tidal river					
Submerged rocks. Shoal, Swamp, Ponds					
Wells: lined; unlined. Tube-well, Spring. Tanks: perennial; dry					
Embankment: road or rail; tank. Broken ground					
Railways, broad gauge; double single gauge; station under control					
Railways, other gauges: double single with distance stone; do					
Mineral line or tramway; Crib. Cutting with tunnel					
Contours with sub-features. Rocky slopes. Cliffs					
Sand features: (filled) Zandi-hills (spermaned). (dotted) shifting					
Towns or Villages: inhabited; deserted. Fort					
Huts: permanent; temporary. Tower. Antiquities					
Temple. Chhatra. Church. Mosque. Igloo. Tomb. Graves					
Lighthouses. Lighthab. Buoy; lighted; unlighted. Anchorage					
Mine. View on traffic. Grass. Scrub					
Palms: peacock, other. Plantain. Conifer. Bamboo. Other trees					
Areas cultivated; wooded. Surveyed tree					
Boundary: international					
<ul style="list-style-type: none"> state: demarcated; undemarcated district: subdivision, tahsil or shikar; forest Pilars: surveyed; undemarcated; village junction. 					
Heights, triangulated; point; approximate					
Bench-mark: geodetic; tertiary; canal					
Post office. Telegraph office. Overhead tank					
Rest house or inspection bungalow. Circuit. House. Police station					
Camping ground. Forest: reserved; protected					
Spaced name: administrative; locality or tribal					
Hospital. Dispensary. Veterinary hospital					
Aerodrome. Helipad. Tourist site					
Power line: with pylons surveyed; with poles unsurveyed					

REFERENCE

NH 70 National Highway No. 70

NOTES :-

A relative height, δr , represents the approximate height, in metres, between the top and bottom of a steep slope.

The course of the Satluj River is liable to continual change owing to shifting of the river bed. Tanks shown dry, in this area usually contain water from July to March.

Distance stones along canals and protective embankments are 1,000 feet apart and every existing fifth stone is shown.

Permission to use cart-tracks and unmetalled roads along canals is required from the Irrigation authorities.

A relative height, e.g., δr , marked along a canal, indicates the height of the top of the canal embankment above the adjacent country.

COMPILATION INDEX

A Compiled from 1:25,000 survey, 2000-01

Projection – UTM Datum – WGS 84

Magnetic Variation from True North about $1\frac{1}{4}^{\circ}$ East in 2000.
(Increasing by about $2'$ annually).

1:50,000 2 cm to 1 km

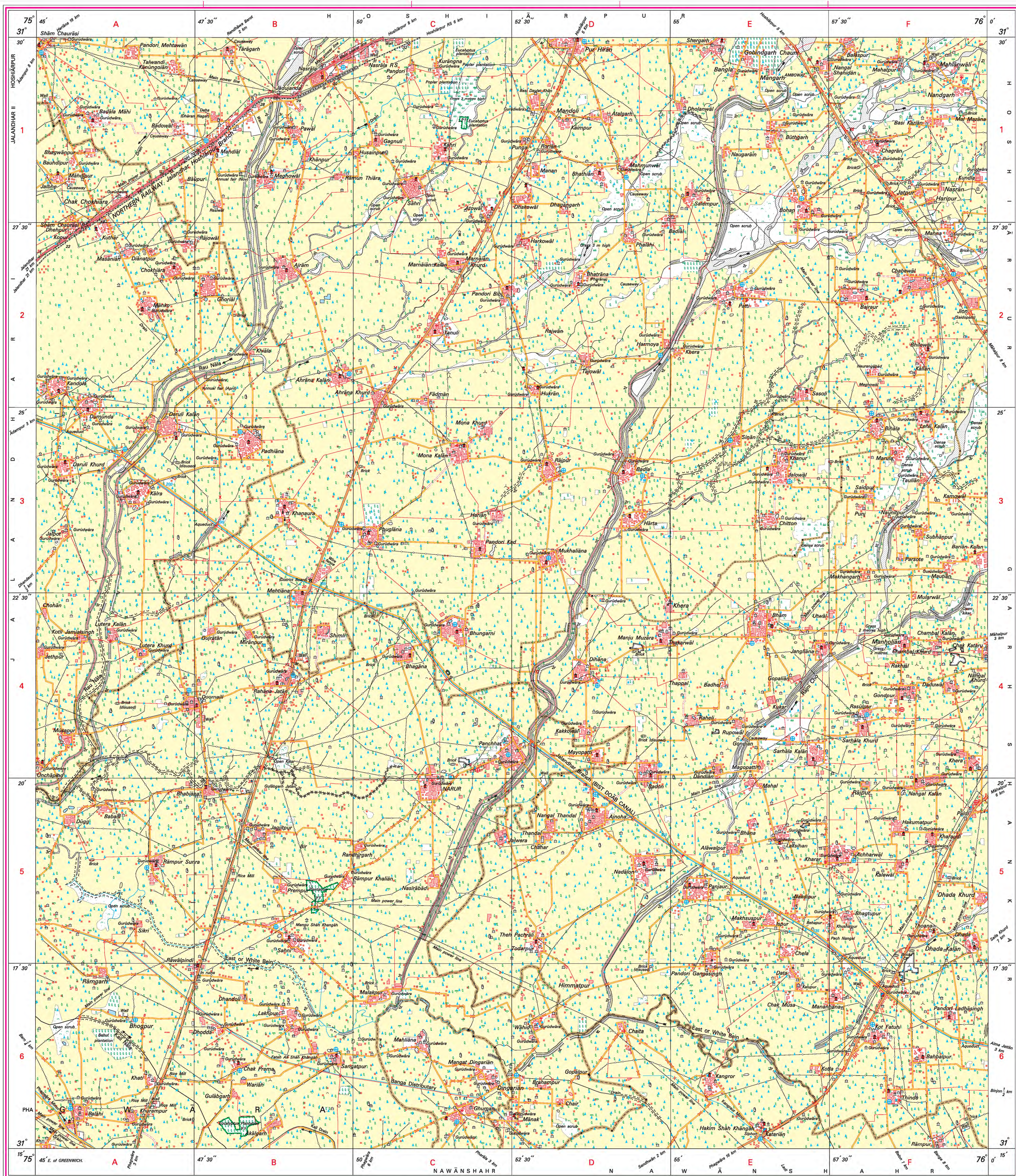
For further details about this man, please contact

Director
Punjab & Chandigarh Geo-Spatial Data Centre
Survey of India, Sector 32 A
Chandigarh.
Fax : 0172 - 2606916

WEBSITE – www.surveyofindia.gov.in

Reproduction in whole or part by any means is prohibited without the written permission of Survey of India, the National Mapping Agency.

© GOVERNMENT OF INDIA COPYRIGHT, 2007.



REG. No. -WPG D'07 (P&C GDC-1:50,000).

भारत के महासूचक मेजर जनरल एम। गोपाल राव, बी०टे०, पी. जी. डिप्लोम (एरियल फोटो), एम०आई०एम०आई०, एम०एस०आई०, एफ०आई०एस०, के निदेशन में प्रकाशित,
Published under the direction of Major General M. Gopal Rao, B.Tech., P.G.Dip. (Aerial Photo), MIME, MCA, FIS, Surveyor General of India,
Survey of India, Hāthibarkale Estate, Post Box No. 37, Dehra Dūn - 248001 (Uttarākhānd)
Department of Science & Technology, Government of India.

PRINTED AT THE WESTERN PRINTING GROUP OF SURVEY OF INDIA.