

72°58'48.000"

72°59'24.000"

73°0'0.000"

Satellite image indicating Alternative Routes for the Proposed Ghansoli to Airoli Creek Bridge by Navi Mumbai Municipal Corporation (NMMC)

19°9'0.000"

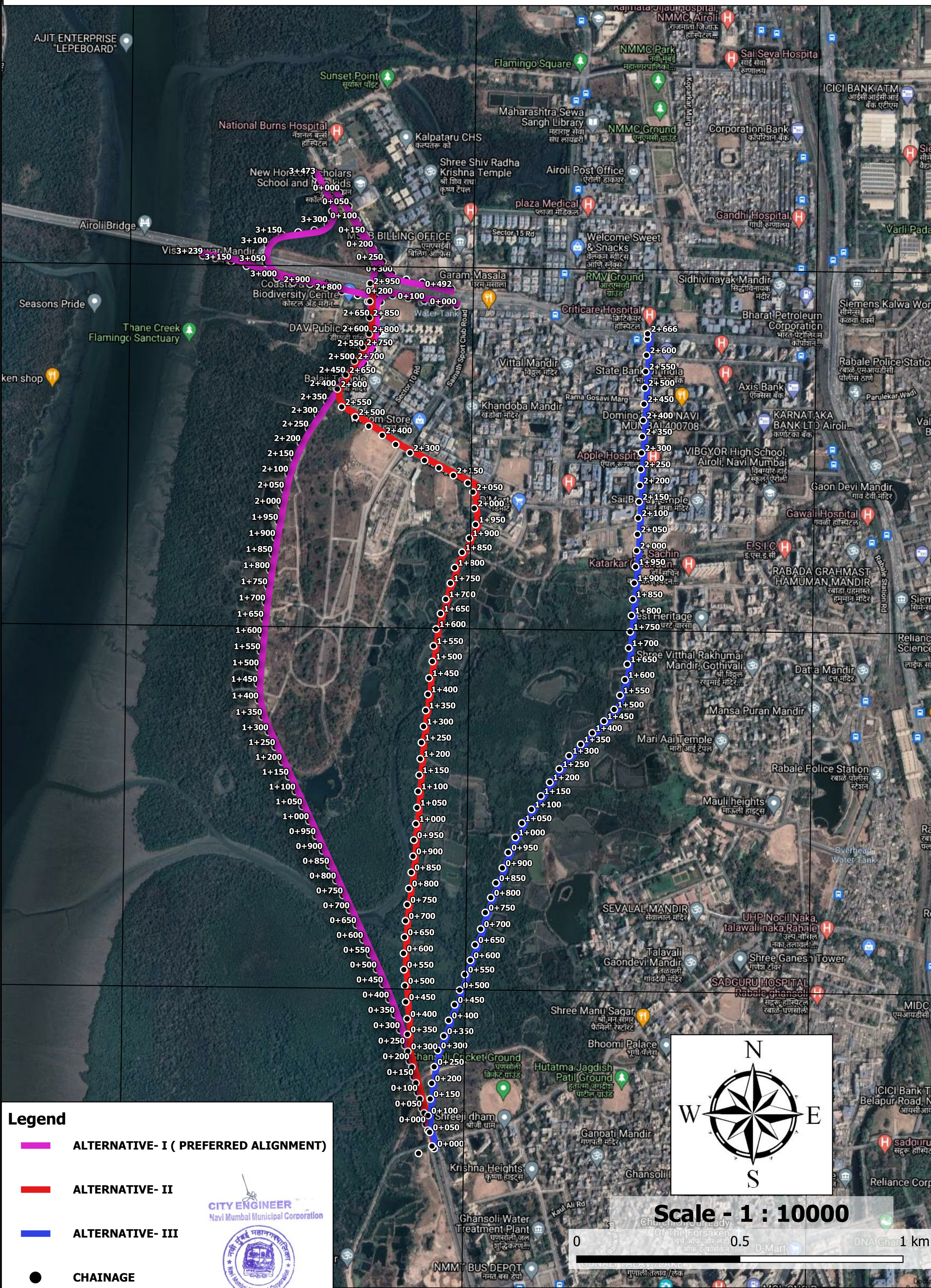
19°8'24.000"

19°7'48.000"

19°9'0.000"

19°8'24.000"

19°7'48.000"



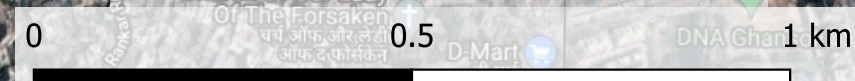
Legend

- ALTERNATIVE- I (PREFERRED ALIGNMENT)
- ALTERNATIVE- II
- ALTERNATIVE- III
- CHAINAGE

CITY ENGINEER
Navi Mumbai Municipal Corporation



Scale - 1 : 10000



72°58'48.000"

72°59'24.000"

73°0'0.000"