



निर्यात के लिए नहीं / NOT FOR EXPORT

OPEN SERIES
MAP

No. F43A12

Scale 1:50,000

Mehesana GUJARAT F43A7 (46A/7)	F43A11 (46A/11) Gandhinagar GUJARAT	F43A15 (46A/15)
F43A8 (46A/8)	F43A12 (46A/12)	F43A16 (46A/16)
F43G5 (46B/5) Ahmadabad GUJARAT	F43G9 (46B/9)	F43G13 (46B/13) Kutch GUJARAT

भारतीय सर्वेक्षण विभाग

SURVEY OF INDIA

1st Edition 2011.

Price : Rs. 77/-

CONVENTIONAL SYMBOLS

Express highway with toll, with bridge, with distance stone
Roads, metalled, according to importance
Roads, double cartway, according to importance
Unmetalled road, cart-track, pack-track with post, foot-path
Streams, with track in bed, undefined, Canal
Dams, masonry or rock-filled, cartwork, Weir
River, dry with water channel, with sand & rocks, Tidal river
Submerged rocks, Shoal, Swamp, Roads
Wells, hand, unlined, Tube-well, Spring, Tanks, perennial, dry
Embankments, road or rail, tank, Broken ground
Railways, broad gauge, double, single with station, under construction
Railways, other gauges, double, single with station, under construction
Mined line or tramway, Ore, Cutting with tunnel
Contours with sub-features, Rocky slopes, Cliffs
Sand features (Vibex) (Zand-Nagaland), (Dykes) (Shifting)
Towns or Villages, inhabited, deserted, Fort
Huts, permanent, temporary, Tower, Antennae
Temples, Chhatra, Church, Mosque, Sighra, Tomb, Graves
Lighthouses, Lightships, Buoy, Light, navigational, Aeronautics
Mine, Vene on hills, Glass, Soda
Palms, palm-tree, other, Plantain, Coffee, Bamboo, Other trees
Arrest, cultivated, wooded, Surveyed tree
Boundary, international
State demarcated, undemarcated
State subdivision, taluk or block, forest
Boundary pillars, surveyed, uncoloured
Height, triangulated, station, point, approximate
Bench-mark, geodetic, tertiary, canal
Post office, Overhead tank
Rest house or inspection bungalow, Circuit house, Police station
Camping ground, Forest, reserved, protected
Special names, administrative, locality or road
Hospital, Dispensary, Veterinary Hospital / Dispensary
Aerodrome, Heliport, Tourist site
Power line, with pylons surveyed, with poles unsurveyed

REFERENCES

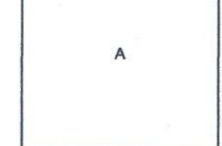
Map of National Highway No.8

NOTES

Heights are in metres and above Indian mean sea level.
Contours are approximate.
A relative height, Δ , represents the top and bottom of a steep slope.
The triangulated heights and contours in this sheet have not been adjusted to the heights of the spirit-levelled benchmarks and may not be strictly in accordance with them.
Distance stones along canal and drain are shown in miles (single type) e.g. 5/7.
Tanks, shown dry, in this area usually contain water from July to October.

COMPILATION INDEX

A. Compiled from 1:25,000 scale survey during 1955-60 and 1958-60.



Projection - UTM Datum - WGS 84

Magnetic Variation from True North about 1° West in 2005.
(Decreasing by about 1' annually).

1:50,000

500 m to 1 cm
2 cm to 1 km
CONTOUR INTERVAL 20 METRES

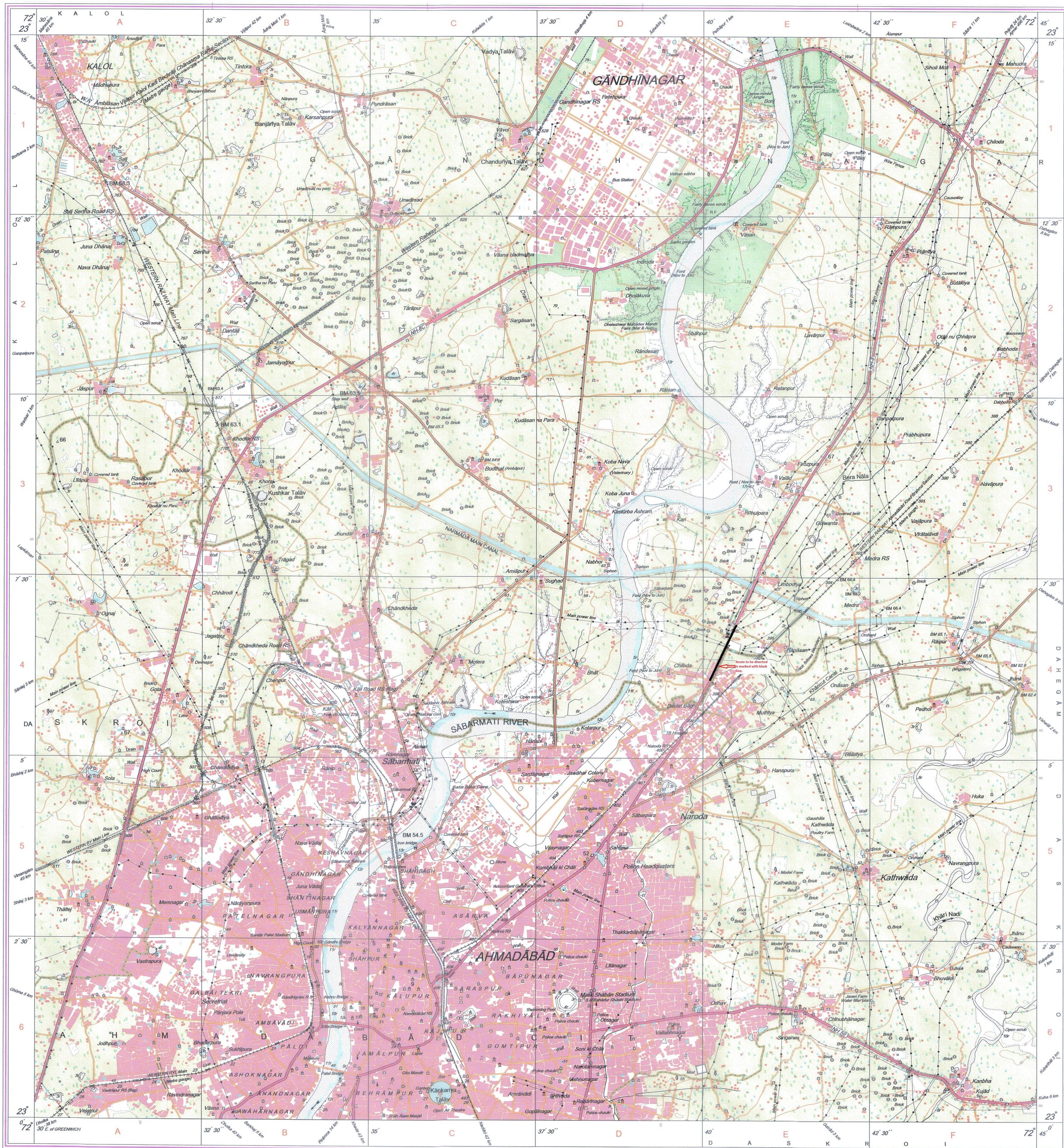
For further details about this map, please contact

Director
Gujarat, Daman & Diu Geo-Spatial Data Centre
Survey of India, Sector 10 (A)
Gandhinagar.

WEBSITE - www.surveyofindia.gov.in

Reproduction in whole or part by any means is prohibited
without the written permission of Survey of India, the
National Mapping Agency.

© GOVERNMENT OF INDIA COPYRIGHT, 2011.



REG. No. - SPG D11 (G) & D (G) 150,000

गुजरात, डमन व दीव / Gujarat, Daman & Diu
भूमानिक डेटा केंद्र / Geo Spatial Data Centre
सर्वेक्षण विभाग / Survey of India

भारत के सर्वेक्षण विभाग, सर्वेक्षण विभाग, भारत, के नियंत्रण में प्रकाशित,
Published under the direction of Swarna Subba Rao, B.E., Surveyor General of India,
Survey of India, Hattibankala Estate, Post Box No. 37, Dehra Dun-248001 (Uttarakhand)
Department of Science & Technology, Government of India.

PRINTED AT THE SOUTHERN PRINTING GROUP OF SURVEY OF INDIA.

REFERENCES TO AHMEDABAD

1. Governor's House
2. Dargah-e-Kutub
3. Inspector General's Office (Police)
4. Hattibankala Estate
5. Ahmedabad Hospital
6. Dargah-e-Kutub
7. Dargah-e-Kutub
8. Dargah-e-Kutub
9. Dargah-e-Kutub
10. Dargah-e-Kutub
11. Dargah-e-Kutub
12. Dargah-e-Kutub
13. Dargah-e-Kutub
14. Dargah-e-Kutub
15. Dargah-e-Kutub
16. Dargah-e-Kutub
17. Dargah-e-Kutub
18. Dargah-e-Kutub
19. Dargah-e-Kutub
20. Dargah-e-Kutub
21. Dargah-e-Kutub
22. Dargah-e-Kutub
23. Dargah-e-Kutub
24. Dargah-e-Kutub
25. Dargah-e-Kutub
26. Dargah-e-Kutub
27. Dargah-e-Kutub
28. Dargah-e-Kutub
29. Dargah-e-Kutub
30. Dargah-e-Kutub