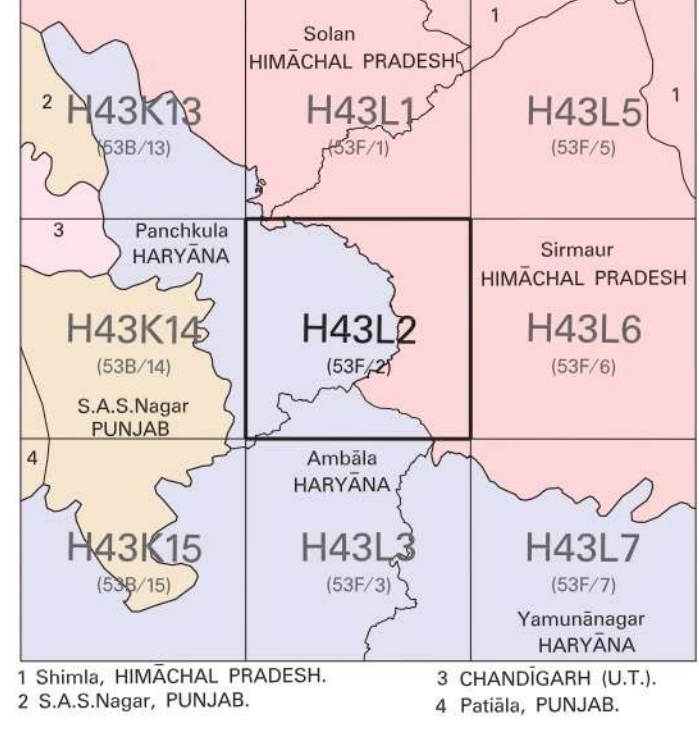


No. H43L2
Scale 1:50,000



भारतीय सर्वेक्षण विभाग SURVEY OF INDIA

1st Edition 2010. Price: ₹70/-

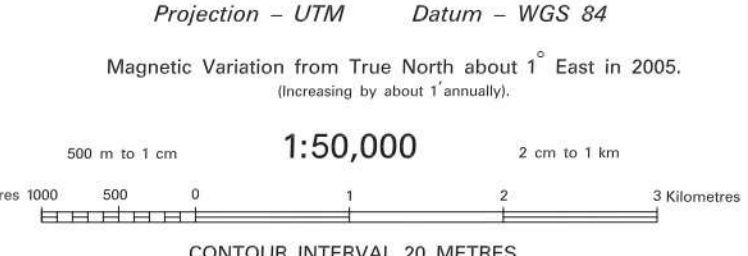
CONVENTIONAL SYMBOLS

Express highway: with toll; with bridge; with distance stone
Roads, metalled: according to importance
Roads, double carriageway: according to importance
Unmetalled road: Cart-track; Pack-track with pass; Foot-path
Streams: with track in bed; underlined; Canal
Dams: masonry or rock-filled; according to importance
River: dry with water channel; with island & rocks; tidal river
Submerged rocks. Shoal. Swamp. Reeds
Wells: lined; unlined; Tube-well; Spring; Tanks: perennial; dry
Embankments: rock or rail; tank; Broken ground
Railways: broad gauge: double; single with station; under constr.
Railways: other gauges: double; single with distance stone; do
Mineral line or tramway. Kilm. Cutting with tunnel
Contours with sub-features. Rocky slopes. Cliffs
Sand features: (flat) (sand-hills) (permanent) (3dunes/shifting)
Towns or Villages: inhabited; deserted; Fort
Huts: permanent; temporary; Tower. Antiquities
Temple. Chhatra. Church. Mosque. Igah. Tomb. Graves
Lighthouse. Lightship. Buoys: lighted; unlighted. Anchorage
Mines: Vise on trefliss. Grass. Scrub
Palms: palmry; other. Plantain. Conifer. Bamboo. Other trees
Areas: cultivated; wooded. Surveyed tree
Boundary, international
state; demarcated; undemarcated
district; subdivision, tahsil or taluk; forest
Boundary pillars: surveyed; uncollected
Heights, triangulated: station; point; approximate
Bench-mark: geodetic; tertiary; canal
Post office. Telegraph office. Overhead tank
Rest house or inspection bungalow. Circuit house. Police station
Camping ground. Forest: reserved; protected
Spaced names: administrative; locality or tribal
Hospital. Dispensary. Veterinary: Hospital / Dispensary
Aerodrome. Helped. Tourist site
Power line: with pylons surveyed; with poles unsurveyed

REFERENCE
NH 72 National Highway No. 72

NOTES :-
Contours are approximate.
The triangulated heights and contours in this sheet have not been adjusted to the heights of the spirit-levelled bench-marks and may not be strictly in accordance with them.
A relative height, *h*, represents the approximate height, in metres, between the top and bottom of a steep slope.
The exterior boundaries of areas of Reserved or Protected forests are shown by green ribands.
Tanks in this area usually contain water from July to December.
Water features are shown in blue where they generally contain water.

PROJECTION - UTM Datum - WGS 84
Magnetic Variation from True North about 1° East in 2005.
(Increasing by about 1' annually).

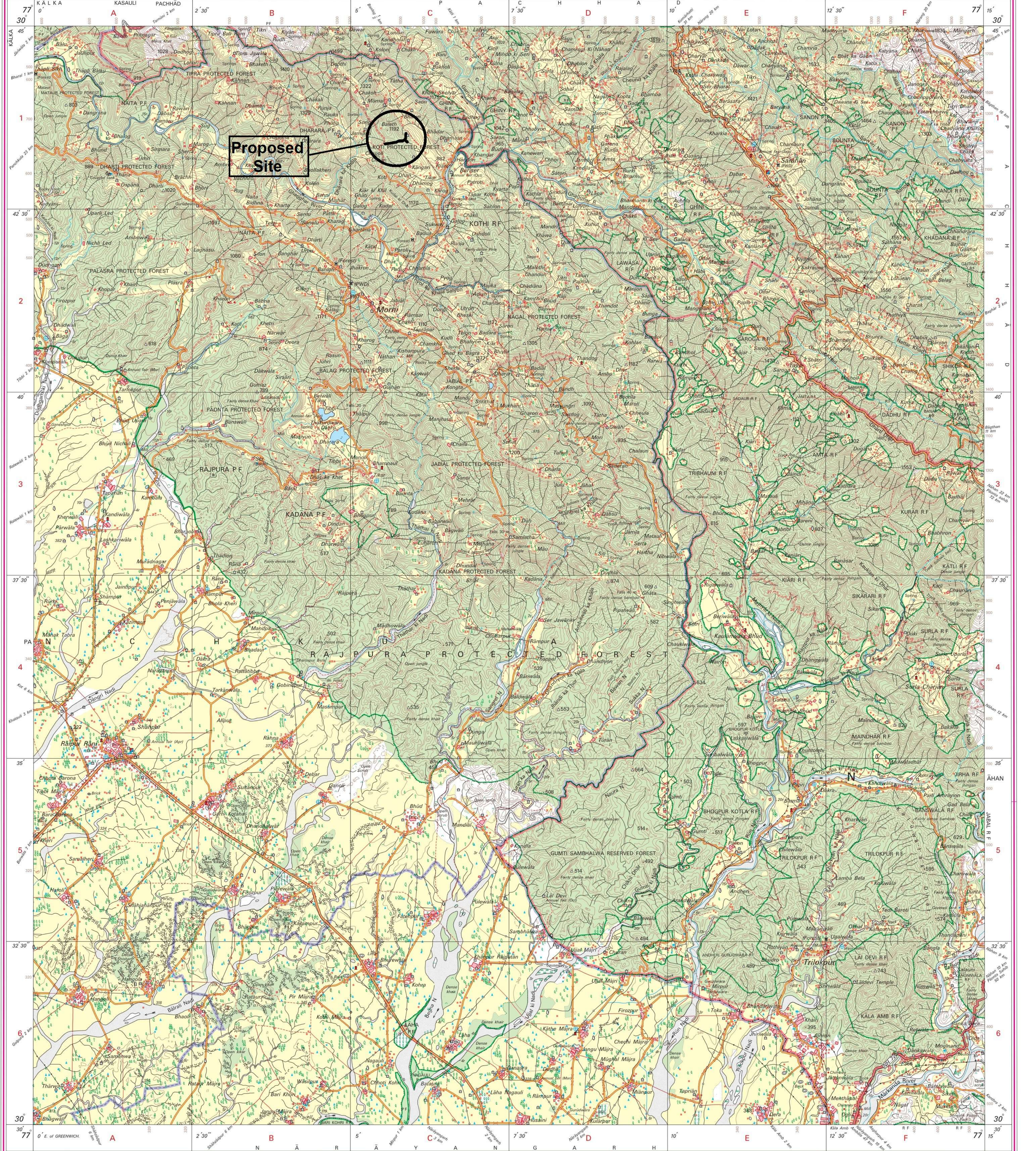


For further details about this map, please contact
Director
Himachal Pradesh Geo-Spatial Data Centre
Survey of India, Sector 32 A
Chandigarh.

WEBSITE - www.surveyofindia.gov.in

Reproduction in whole or part by any means is prohibited without the written permission of Survey of India, the National Mapping Agency.

GOVERNMENT OF INDIA COPYRIGHT, 2010.



Sub Divisional Engineer
Prov. Sub Divn. I.
H. PWD B&R Br., Panchkula

Mr. Anil Kamboj, Sub Divisional Engineer,
Provincial Sub Division No. 1, Hr. PWD B&R Br., Panchkula