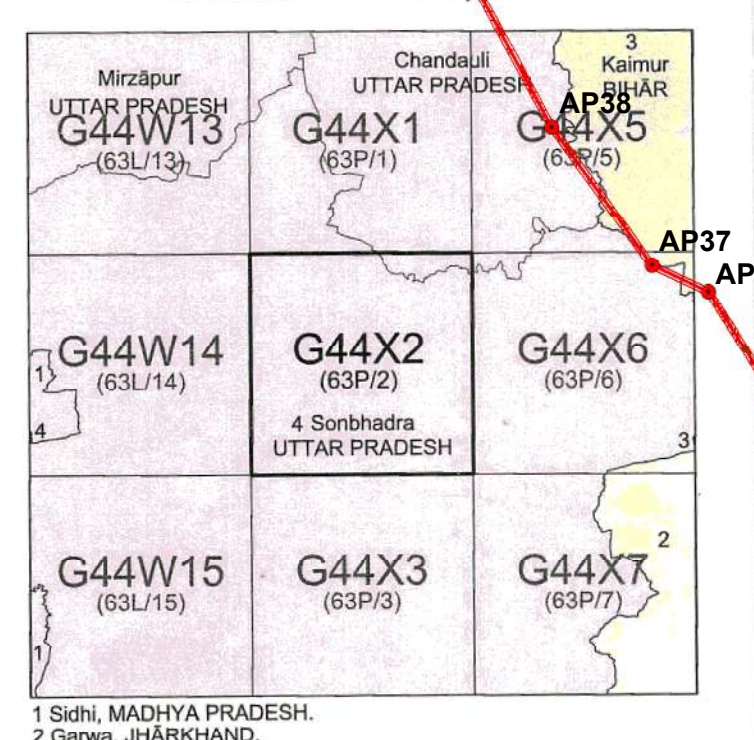


# ROUTE MAP OF 400kV D/C JAUNPUR - OBRA TRANSMISSION LINE

निर्वात के लिए नहीं NOT FOR EXPORT  
**OPEN SERIES MAP**  
**No. G44X2**  
 Scale 1:50,000



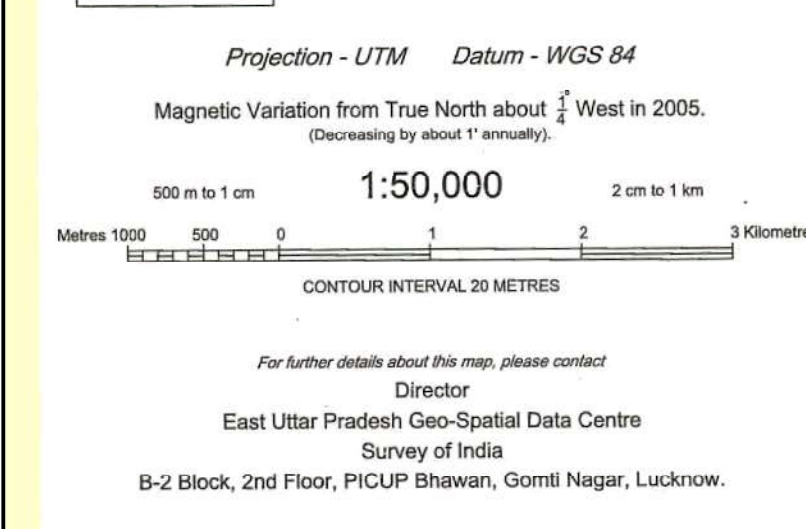
भारतीय सर्वेक्षण विभाग SURVEY OF INDIA  
 1st Edition 2011. Price : Rs.118/-

**CONVENTIONAL SYMBOLS**

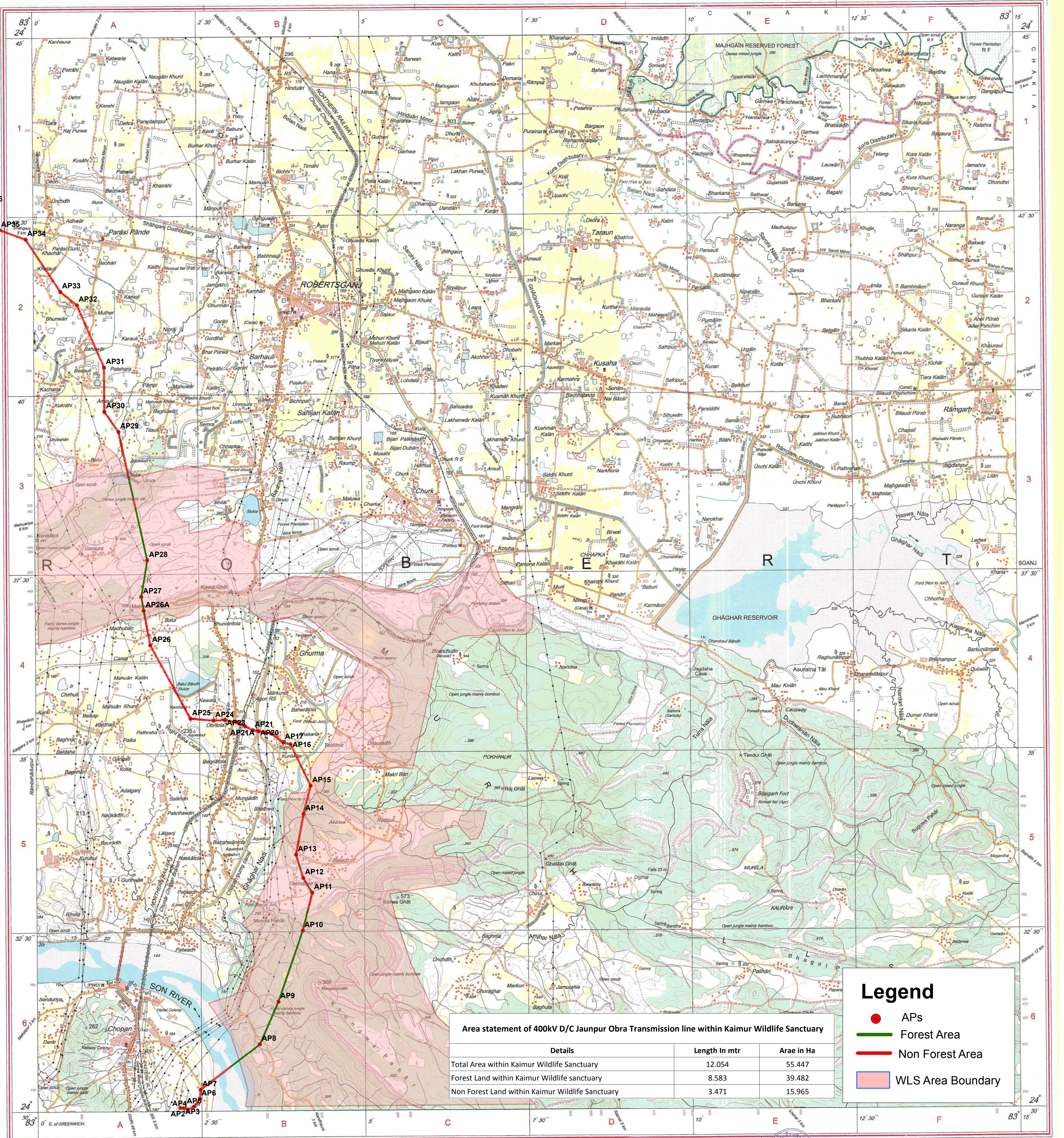
Express highway with toll, with bridge, with distance stone	
Roads, metalled, according to importance	
Roads, double cartway, according to importance	
Unmetalled road, cart-track, pack-track with pass, foot-path	
Streams with track in bed, unconfined, Canal	
Dams, masonry or rock-filled, earthwork, Weir	
River, dry with water channel, with island & rocks, Tidal river	
Submerged rocks, Shoal, Swamp, Reeds	
Hoops, live, unlined, Tube-well, Spring, Tank, perennial, dry	
Embankments, road or rail track, Broken ground	
Railways, broad gauge; double, single with station, under construction	
Railways, other gauges; double, single with distance stone, do.	
Contours with sub-features, Rocky slopes, Cliff	
Soils features: (Y)M, (Z)Jangal (permanent), (D)Jangal (shifting)	
Towns or Villages: inhabited, deserted, Fort	
Huts: permanent, temporary, Tower, Antiquities	
Temples, Church, Mosque, Ghat, Tomb, Graves	
Lighthouse, Lightship, Buoys: lighted, unlighted, Anchorage	
Mine, Vine on trellis, Grass, Scrub	
Palms: palmyra, other, Plantain, Conifer, Bamboo, Other trees	
Areas: cultivated, wooded, Surveyed tree	
Boundary, international	
state demarcated, undemarcated	
district, subdivision, tahsil or taluk, forest	
Boundary pillars: surveyed, unlocated	
Heights, triangulated, station, point, approximate	
Bench mark: geodetic, tertiary, canal	
Post office, Telegraph office, Overhead tank	
Rest house or inspection bungalow, Circuit house, Police station	
Camping ground, Forest: reserved, protected	
Spaced names: administrative, locality or tribal	
Hospital, Dispensary, Veterinary Hospital / Dispensary	
Aerodrome, Helipad, Tourist site	
Power line: with pylons surveyed, with poles unsurveyed	

**NOTES -**  
 Heights are in metres and above Indian mean sea level.  
 Contours are approximate.  
 A relative height, e.g., 20, represents the approximate height, in metres, between the top and bottom of a steep slope.  
 Non-perennial portion of the Ghaghhar Reservoir is generally cultivated.  
 Tanks, shown dry, in this area usually contain water from July to March.  
 Wells are numerous in the plain area of the sheet; only the important one have been shown.  
 All unmetalled roads and cart-tracks in this sheet are generally motorable in dry season. Permission to use those along canals is required from Irrigation and Forest authorities respectively.  
 Non-perennial canals shown in this sheet, generally carry water from July to November.  
 The kilometre stone numbers along the roads, railways and canals are shown in stant type e.g., 5, whereas milestone numbers are shown in upright type, e.g., 5.

**COMPILED INDEX**  
 A Modern Survey 1966-67, Updated for major details during 2006-07 and administrative boundaries updated during 2000-09.



For further details about this map, please contact  
 Director  
 East Uttar Pradesh Geo-Spatial Data Centre  
 Survey of India  
 B-2 Block, 2nd Floor, PICUP Bhawan, Gornli Nagar, Lucknow.  
 WEBSITE - www.surveyofindia.gov.in  
 Reproduction in whole or part by any means is prohibited without the written permission of Survey of India, the National Mapping Agency.



**Area statement of 400kV D/C Jaunpur Obra Transmission line within Kaimur Wildlife Sanctuary**

Details	Length In mtr	Area in Ha
Total Area within Kaimur Wildlife Sanctuary	12,054	55,447
Forest Land within Kaimur Wildlife sanctuary	8,583	39,482
Non Forest Land within Kaimur Wildlife Sanctuary	3,471	15,965

**Legend**

- APs
- Forest Area
- Non Forest Area
- WLS Area Boundary