

मध्य प्रदेश
MADHYA PRADESH

BALAGHAT & MANDLA DISTRICTS.

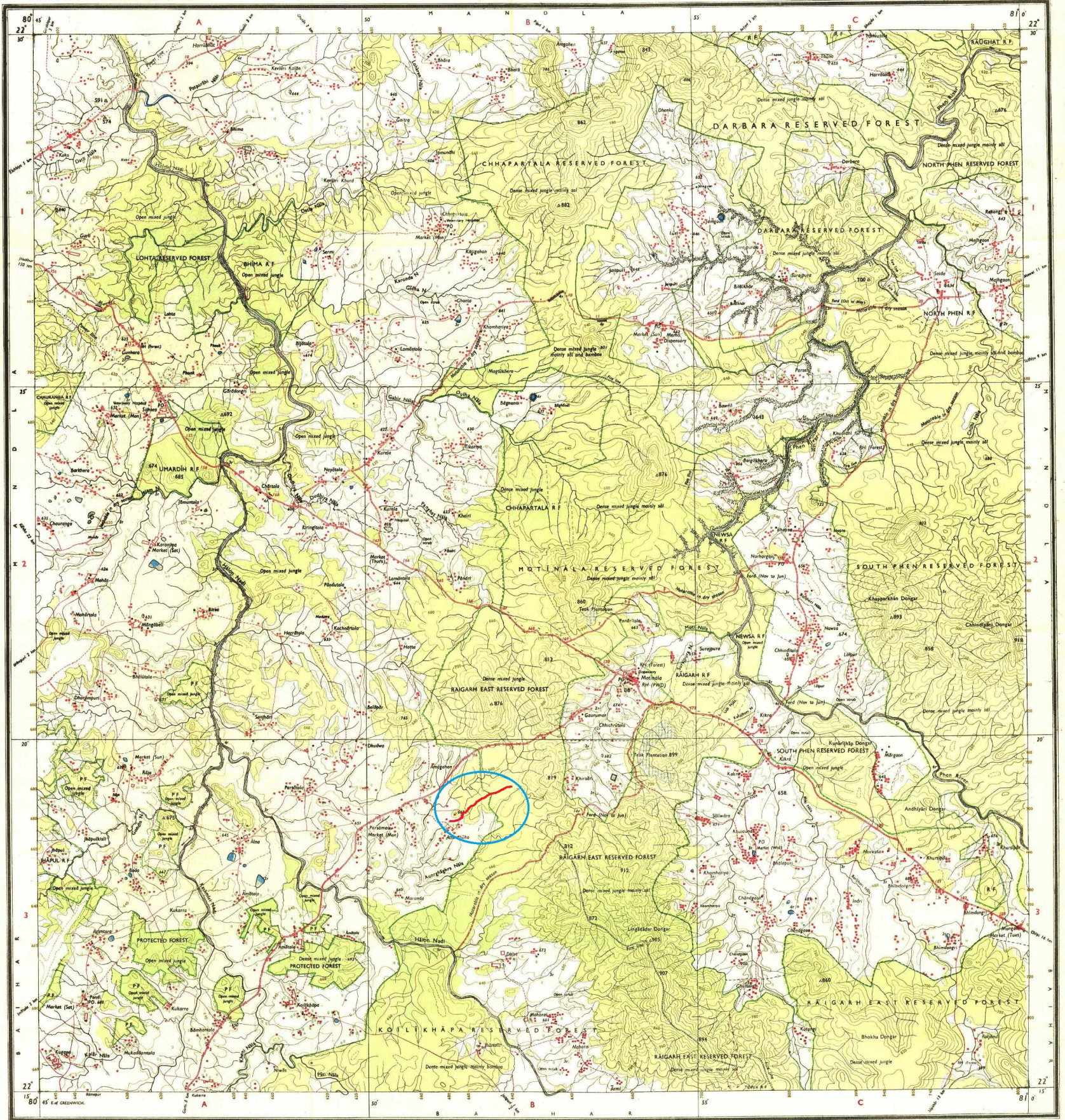
Surveyed 1971-72.

Magnetic Variation from True North about 6° West in 1975.
(Increasing by about 1° annually).

No. 64 B/15

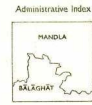
REFER TO THIS MAP AS - I:50,000
SHEET 64 B/15 FIRST EDITION

FIRST EDITION



Revised 1978 (C. 64-13333)-30280-800487.

- Index to Sheets
- | | | |
|-------|-------|-------|
| 64/10 | 64/11 | 64/12 |
| 64/13 | 64/14 | 64/15 |
| 64/16 | 64/17 | 64/18 |
| 64/19 | 64/20 | 64/21 |
- Scale: 1:50,000
- 500 m to 1 km
- Nearest 500 0 500 1000 1500 2000 2500 3000 3500 4000 4500 5000
- Heights & Contours in Metres
- CONTOUR INTERVAL 20 METRES
- Water features are shown in blue where they generally contain water. Cultivated areas are colored yellow. The exterior boundaries of areas of Reserved or Protected Forests are shown by green ribbons.
- Closure is approximate. A relative height, or, represents the approximate height in metres between the top and bottom of a steep slope. Wooded areas are colored green. Scattered trees and other vegetation are in green, but prominent surveyed trees are in black.
- *Not applicable.
- The scale half of the area appearing on this map is approximately doubled and the variation given may differ largely from the actual value.



- Administrative Index
- Scale: 1:50,000
- 500 m to 1 km
- Nearest 500 0 500 1000 1500 2000 2500 3000 3500 4000 4500 5000
- Heights & Contours in Metres
- CONTOUR INTERVAL 20 METRES
- Water features are shown in blue where they generally contain water. Cultivated areas are colored yellow. The exterior boundaries of areas of Reserved or Protected Forests are shown by green ribbons.
- Closure is approximate. A relative height, or, represents the approximate height in metres between the top and bottom of a steep slope. Wooded areas are colored green. Scattered trees and other vegetation are in green, but prominent surveyed trees are in black.
- *Not applicable.
- The scale half of the area appearing on this map is approximately doubled and the variation given may differ largely from the actual value.

REFER TO THIS MAP AS - I:50,000
SHEET 64 B/15 FIRST EDITION
INDIA

मध्य प्रदेश
मध्य प्रदेश राज्य सरकार
भू-सूचना विभाग द्वारा तैयार

GOVERNMENT OF INDIA COPYRIGHT, 1978.
Price: Ten Rupees.