

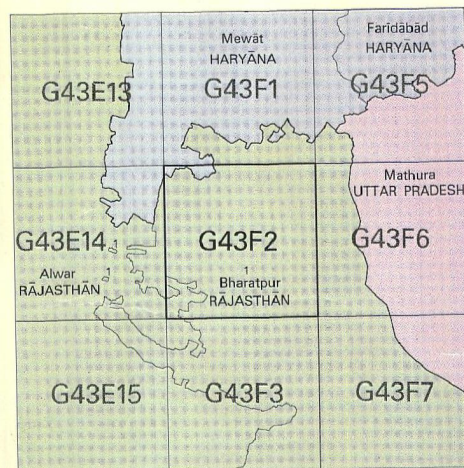


निर्यात के लिए नहीं NOT FOR EXPORT

OPEN SERIES
MAP

No. G43F2

Scale 1:50,000



5472

भारतीय सर्वेक्षण विभाग

SURVEY OF INDIA

1st Edition 2007.

Price : Rs. 50/-

CONVENTIONAL SYMBOLS

- Express highway with toll; with bridge with distance stone
- Roads, modified: according to importance
- Roads, double carriageway, according to importance
- Unsurfaced road, Cart-track, Track with pass, Footpath
- Streams with track in bed; undrained, Canal
- Dams: masonry or rock-filled; earthwork, Weir
- River: dry with water channel; with island & rocks, Tidal river
- Submerged rocks, Shoal, Swamp, Reeds
- Wells: lined, Tube-well, Spring, Tanks: perennial, dry
- Flooded area: road or rail; tank, Broken ground, etc.
- Railways, broad gauge: double, single with station; under constr.
- Railways, other gauges: double, single with distance stone, etc.
- Mineral line or tramway, K.M. Cutting with tunnel
- Contours with sub-features, Rocky slopes, Cliffs
- Sand features: (Shif, Dune, hills, permanent), (Dunes, shifting)
- Towns or Villages: inhabited, deserted, Fort
- Huts: permanent, temporary, Tower, Antiquities
- Temple, Chhatra, Church, Mosque, Dargah, Tomb, Graves
- Lighthouse, Lightship, Buoy, Lighted, unlighted, Anchorage
- Mine: Vine on trellis, Grass, Scrub
- Palm: palmier; other, Plantain, Canebrake, Bamboo, Other trees
- Areas: cultivated, wooded, Surveyed tree
- Boundary, international
- state: demarcated, undemarcated
- district: subdivision, taluk or taluk, forest
- Boundary pillars: surveyed, unlocated, village junction
- Height, triangulated: station, point, approximate
- Bench-mark: geodetic, tertiary, canal
- Post office, Telegraph office, Overhead tank
- Rest house or inspection bungalow, Clock house, Police station
- Camping ground, Forest: reserved, protected
- Spaced names: administrative, locality or tribal
- Hospital, Dispensary, Veterinary hospital
- Aerodrome, Helipad, Tourist site
- Power line: with pylons surveyed; with poles unsurveyed

NOTES

Heights are in metres and above Indian mean sea level.

Contours are approximate.

Tanks, shown dry, in this area usually contain water from July to February.

Unsurfaced road and cart-track in this sheet are generally motorable. Permission to use these along canal is required from the irrigation authorities.

Units of cultivation are variable and dependent on rainfall.

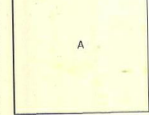
A relative height, e.g., 30, marked along a canal, indicates the height of the top of the canal embankment above the adjacent country.

A relative height, e.g., 5, represents the approximate height, in metres, between the top and bottom of a steep slope.

The kilometre stone numbers along roads are shown in slant type, e.g., 5, whereas mile stone numbers along the Kaimosi road are shown in up-right type, e.g., 5.

COMPILATION INDEX

A. Surveyed during 1968-69. Updated for major details during 2007-08.



Projection - UTM Datum - WGS 84

Magnetic Variation from True North about 1° East in 2005.

1:50,000

500 m to 1 cm 2 cm to 1 km 3 Kilometres

CONTOUR INTERVAL 20 METRES

For further details about this map, please contact

Director

Haryana Geo-Spatial Data Centre

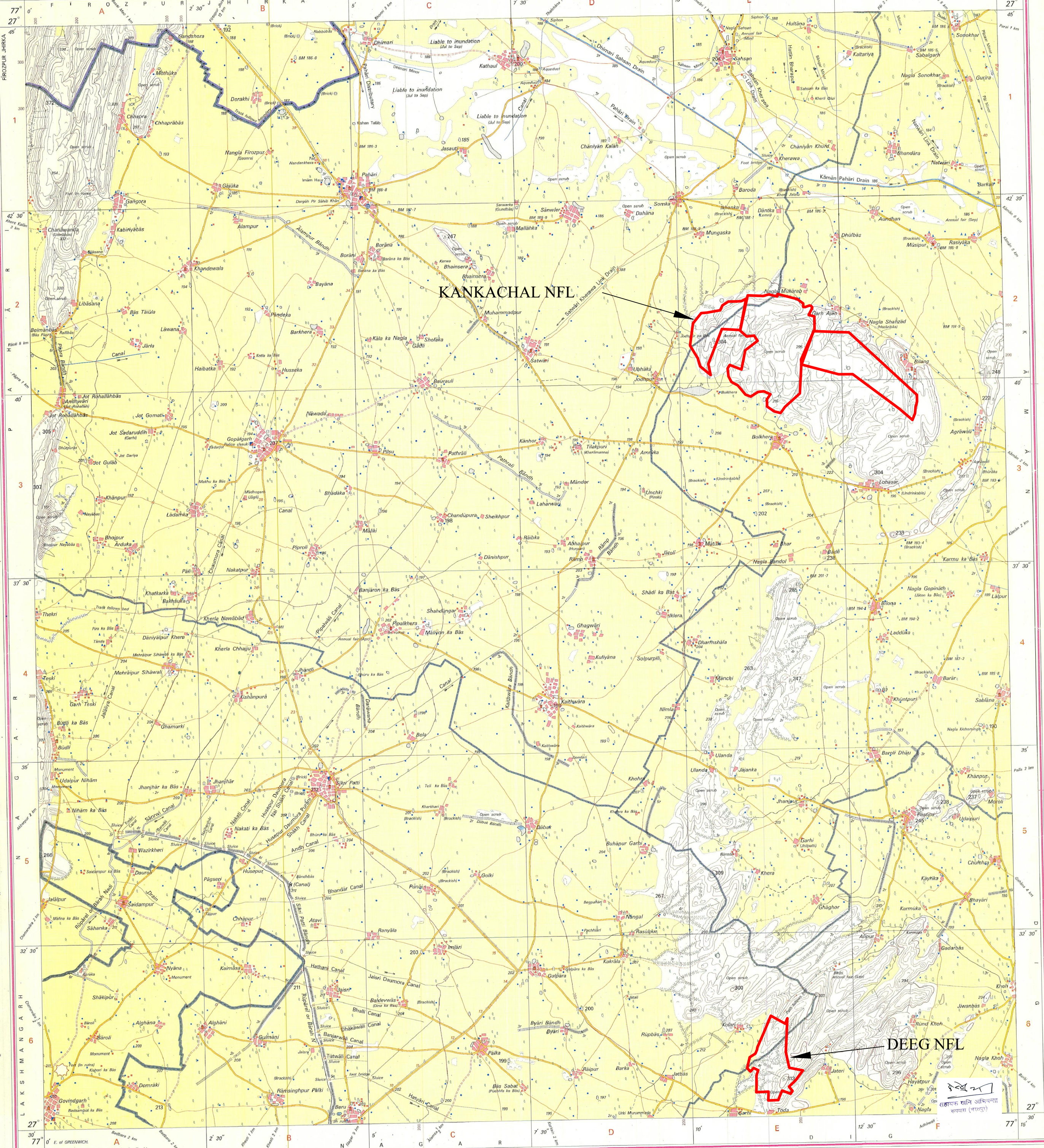
Survey of India, Sector 32 A

Chandigarh.

Fax : 0172 - 2604671

WEBSITE - www.surveyofindia.gov.in

Reproduction in whole or part by any means is prohibited without the written permission of Survey of India, the National Mapping Agency.



REEL NO. 102/2 WGS 84 by Haryana GSD-510/000-1510.

भारत के सर्वेक्षण विभाग द्वारा तैयार किया गया है। सर्वेक्षण विभाग, भारत सरकार, नई दिल्ली।
भारत के सर्वेक्षण विभाग द्वारा तैयार किया गया है। सर्वेक्षण विभाग, भारत सरकार, नई दिल्ली।
Published under the direction of Major General M. Gopal Rao, B.Tech., P.G.Dip. (Aerial Photo), M.M.C., M.C.A., F.I.S., Surveyor General of India,
Survey of India, Hathi Bakale Estate, Post Box No. 37, Dehra Dun - 248001 (Uttarakhand)
Department of Science & Technology, Government of India.

PRINTED AT THE WESTERN PRINTING GROUP OF SURVEY OF INDIA.