

INDEX MAP

MAHARASHTRA

OFFICE OF THE EXECUTIVE ENGINEER,
MINOR IRRIGATION DIVISION
IRRIGATION DEPARTMENT
BHANDARA

REFER TO THIS MAP AS - 1:50,000
SHEET 55 O/II FIRST EDITION

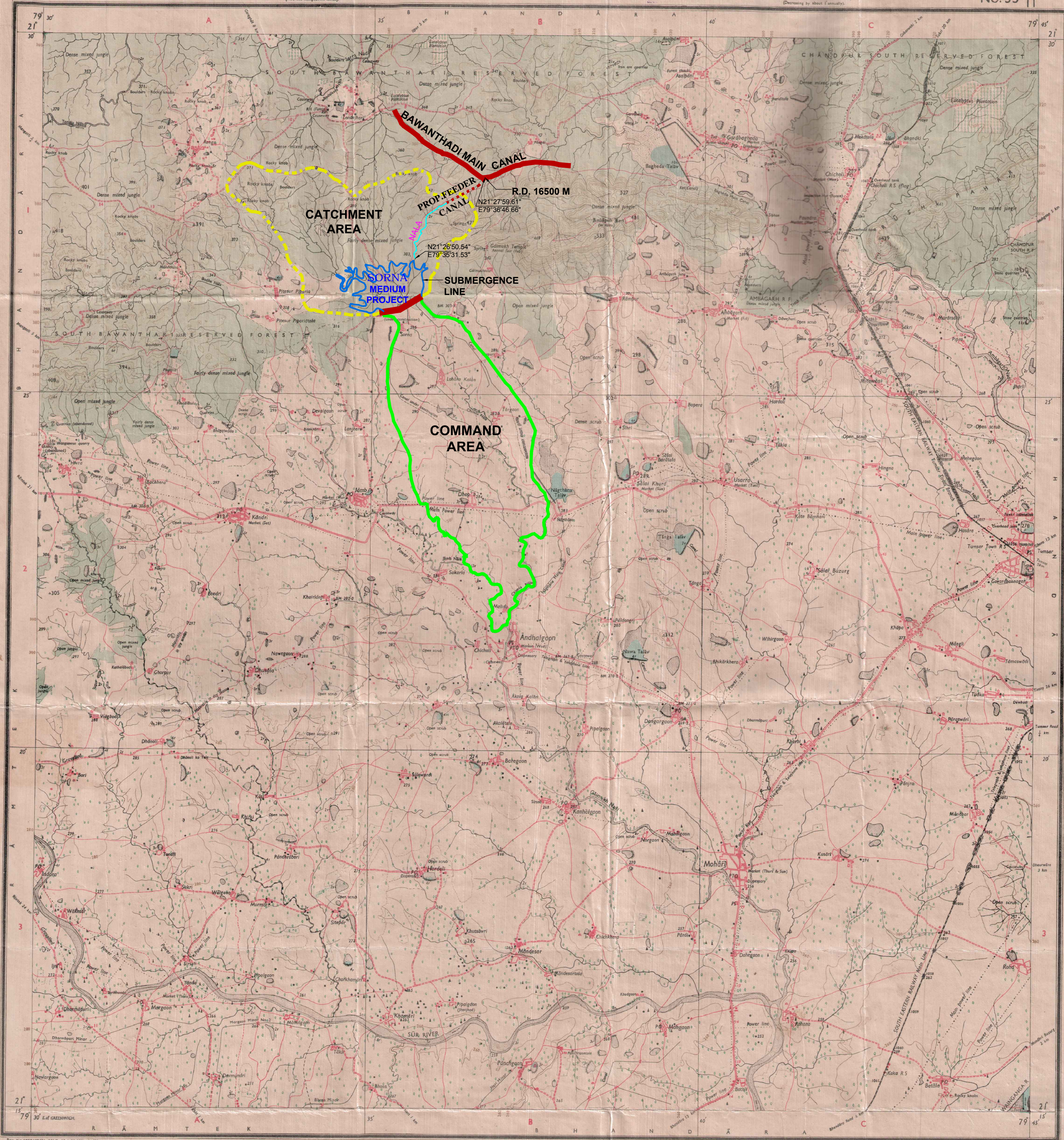
FIRST EDITION

No. 55

BHANDARA & NAGPUR DISTRICTS.

Surveyed 1970-71, 1973-74
(Also see compilation notes)

Magnetic Variation from True North about 1 1/2° West in 1970.
(Decreasing by about 1° annually)



Revised No. 55B HD-76 (W.C. 13-133-233)-68/76

Published under the direction of Major-General K.L. Khosla, B.Sc. (Civil), F.R.S., F.I.C., F.I.G.U., M.A.S.C.E. (U.S.A.) Surveyor-General of India.

1976

1:50,000

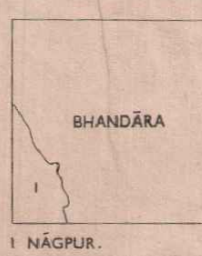
HEIGHTS & CONTOURS IN METRES
CONTOUR INTERVAL 20 METRES

- * Water features are shown in blue where they generally contain water.
- * Cultivated areas are coloured yellow.
- * The exterior boundaries of areas of Reserved or Protected Forests are shown by green ribbons.
- * Not applicable.

The triangulated heights and contours in this sheet have not been adjusted to the heights of the spirit-levelled bench-marks and may not be strictly in accordance with them.
The kilometre scale numbers along roads, railways and canals are shown in slant type, e.g. '5' whereas milestone numbers are shown in upright type, e.g. '5'.
Unmetalled roads in this sheet are generally motorable in dry season.
Tanks, shown dry, in this area usually contain water from June to January.
Numerous field bunds of less than 2 metres in height occur throughout the cultivated areas.

COMPILATION INDEX
A. Compiled from 1:25,000 survey, 1970-71.
B. Modern survey, 1973-74.

Administrative Index



- Printed on the 100% (L) Printed Paper of Survey of India.
- Towns or Villages: inhabited (shaded) Forts
 - Huts: permanent temporary, Tower, Antiquities
 - Temple, Chhatra, Church, Mosque, Jagah, Tomb, Graves
 - Lighthouse, Lightship, Buoy, Lighted, Unlighted, Anchorage
 - Mine, Vine, on tralis, Grass, Scrub
 - Palm: palm, other, Plain, Conifer, Bamboo, Other trees
 - Boundary: International
 - state demarcated, undemarcated
 - district subdivision, taluk, or taluk forest
 - Boundary pillars: surveyed, unlocated, village junction
 - Height (triangulated) station: point, approximate
 - BM 633, BM 634, BM 635
 - Post office, Telegraph office, Combined office, Police station, P.O.
 - Bungalows: dak or travellers, inspection, Rest-house
 - Circuit house, Camping ground, Forest: reserved, protected, CH, CE, R.F., P.F.
 - Spaced names: administrative, locality or tribal
 - KIKRI, NAGA

GOVERNMENT OF INDIA COPYRIGHT, 1976.
Price: Five Rupees.

REFER TO THIS MAP AS - 1:50,000
SHEET 55 O/II FIRST EDITION

INDIA