



No. H43R14

Scale 1:50,000

H43R9 (53G/9) Saharanpur UTTAR PRADESH	H43R13 (53G/13) Saharanpur UTTAR PRADESH	H44M1 (53K/1) Saharanpur UTTAR PRADESH
H43R10 (53G/10) Saharanpur UTTAR PRADESH	H43R14 (53G/14) Saharanpur UTTAR PRADESH	H44M2 (53K/2) Saharanpur UTTAR PRADESH
H43R11 (53G/11) Saharanpur UTTAR PRADESH	H43R15 (53G/15) Muzaffarnagar UTTAR PRADESH	H44M3 (53K/3) Muzaffarnagar UTTAR PRADESH

1 Dehra Dun, UTTARAKHAND.
2 Garhwal, UTTARAKHAND.

भारतीय सर्वेक्षण विभाग SURVEY OF INDIA

1st Edition 2011.

Price : Rs. 77/-

CONVENTIONAL SYMBOLS

Express highway: with toll, with bridge: with distance stone	
Roads, metalled: according to importance	
Roads, double centrefree: according to importance	
Unmetalled road: Cart-track: Paved-track with pass: Foot-path	
Streamers with track in bed: underfilled: Canal	
Dams: masonry or rock-filled: earthwork: Well	
River: dry with water channel: with island & rocks: Tidal river	
Submerged rocks: Shoal: Swamps: Roads	
Wells: shed: unfilled: Tube-well: Spring: Tank: perennial: dry	
Embankments: road or rail: tank: Broken ground	
Railways: broad gauge: double: single with station: under construction	
Railways: other gauges: double single with distance stone	
Mineral line or tramway: Kila: Cutting with tunnel	
Contours with sub-factors: Rocky slopes: Cliffs	
Sand features (Wind-blown: dunes: (dunes: dunes: dunes)	
Towns or Villages: inhabited: deserted: Fort: (dunes: dunes: dunes)	
Hills: permanent: temporary: Tower: Antiquities	
Temples: Chhatra: Church: Mosque: Light: Tomb: Grave	
Lighthouse: Lightship: Buoy: lighted: unlighted: Anchorage	
Mine: Vine on trellis: Grass: Scrub	
Palms: palm-tree: other: Plantain: Conifer: Bamboo: Other trees	
Access: outwashed: wooded: Surveyed tree	
Boundary: international	
enter: demarcated: undemarcated	
district: subdivision: taluk or block: forest	
Boundary: Pillars: surveyed: uncoloured	
Height: triangulated: station: police: approximate	
Bench-mark: geodetic: railway: canal	
Post office: Telegraph office: Overhead tank	
Rest house or inspection bungalow: Ghat: house: Police station	
Camping ground: Forest: reserved: protected	
Speed: railway: administrative: locality or other: (Kilometer: Kilometer: Kilometer)	
Hospital: Dispensary: Veterinary Hospital / Dispensary	
Aerodrome: Helipad: Tourist site	
Power line: with poles surveyed: with poles unsurveyed	

Legend

Proposed CA Land

REFERENCES

NV 25 National Highway No. 55.

NOTES :-

heights are in metres and above Indian mean sea level.
Contours are appropriate.
A relative height, or, represents the approximate height, in metres, between the top and bottom of a mass slope.
Tanks, shown dry, in this area, usually contain water from July to March.
Tube-wells are numerous throughout the sheet; only the important ones have been shown.
Unmetalled roads and cart-tracks in this sheet are generally metalled in dry season. Permission to use unmetalled road and cart-track along canal is required from the irrigation authorities.
Milestone numbers along canals have been shown as e.g.,

COMPILATION INDEX

A	Surveyed during 1975-77. Updated by 1:25,000 scale survey during 1990-91 and further updated by 1:50,000 scale survey during 2005-08 for major details.
---	---

Projection - UTM Datum - WGS 84

Magnetic Variation from True North about 3° East in 2005. (increasing by about 1° annually).

1:50,000

800 m to 1 cm
2 cm to 1 km
3 Kilometres

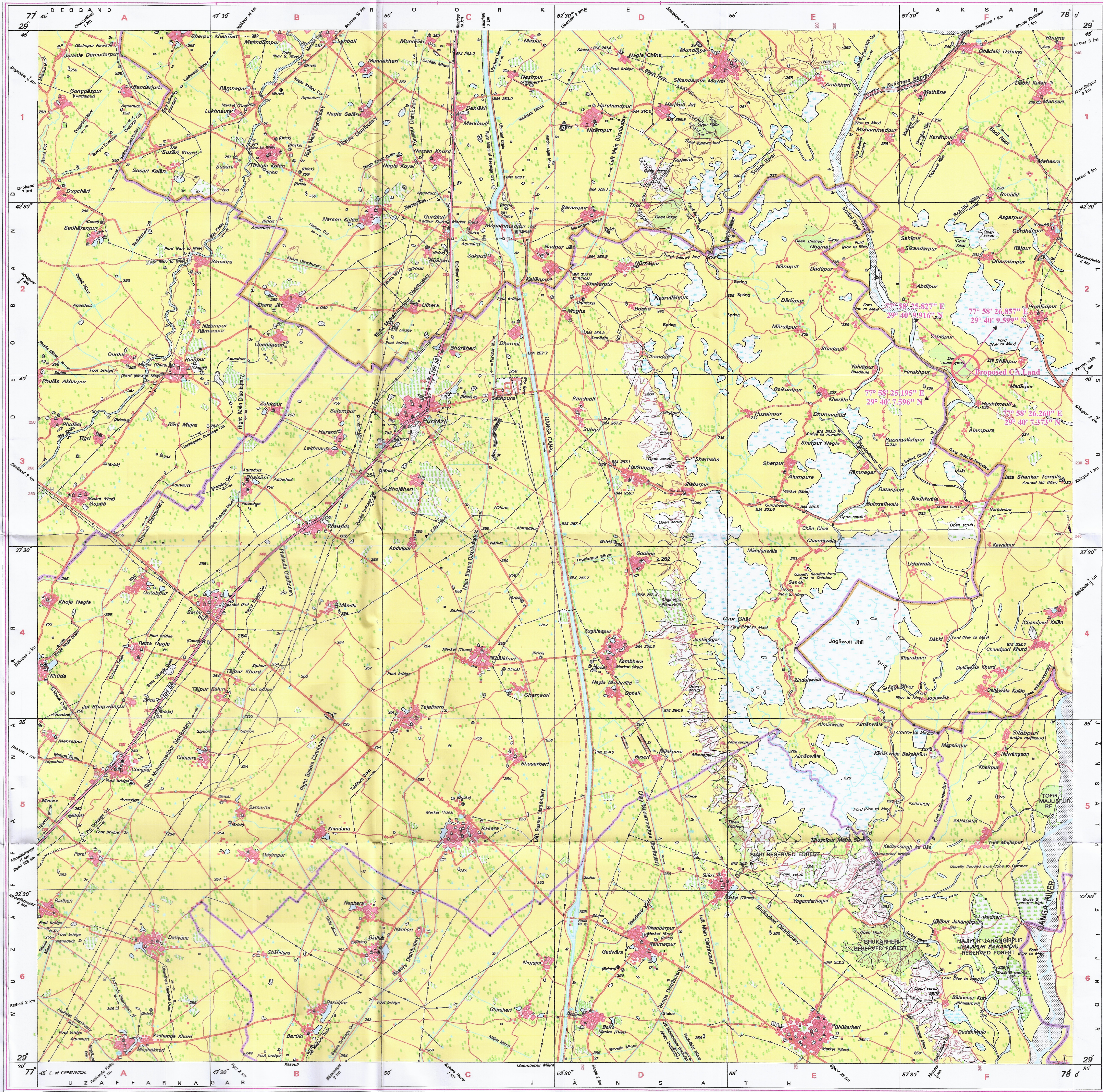
CONTOUR INTERVAL 10 METRES

For further details about this map, please contact
Director
Uttarakhand and West Uttar Pradesh Geo-Spatial Data Centre
Survey of India, 17 E.C. Road, Karanpur
Dehra Dun.

WEBSITE - www.surveyofindia.gov.in

Reproduction in whole or part by any means is prohibited without the written permission of Survey of India, the National Mapping Agency.

GOVERNMENT OF INDIA COPYRIGHT, 2011.



(सुरक्षित)
प्रमाणित निदेशक
(कुलदीप सिंह)
क्षेत्रीय वन अधिकारी
मुजफ्फरनगर