



निर्यात के लिए नहीं NOT FOR EXPORT

OPEN SERIES  
MAP

No. F42D12

Scale 1:50,000

	F42D12 (41E/12) Kachchh GUJARAT	

भारतीय सर्वेक्षण विभाग

SURVEY OF INDIA

1st Edition 2010.

Price : Rs. 70/-

#### CONVENTIONAL SYMBOLS

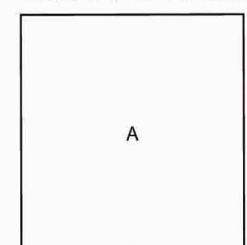
Express highway: with toll; with bridge; with distance stone  
Roads, metalled: according to importance  
Roads, double cartiageway: according to importance  
Unmetalled road. Cart-track. Pack-track with pass. Foot-path  
Streams: with track in bed; undefined. Canal  
Dams: masonry or rock-filled; earthen. Weir  
River: dry with water channel; with island & rocks. Tidal river  
Submerged rocks. Shoal. Swamp. Reeds  
Wells: lined; unfired. Tube-well. Spring. Tanks: perennial; dry  
Embankments: road or rail; tank. Broken ground  
Railways, broad gauge: double; single with station; under constr.  
Railways, other gauges: double; with distance stone; do.  
Mineral line or tramway. Kin. Cutting with tunnel  
Contours with sub-features. Rocky slopes. Cliffs  
Sand features: (1) flat. (2) sand-hills (permanent). (3) dunes (shifting)  
Towns or Villages: inhabited; deserted. Fort  
Huts: permanent; temporary. Tower. Antiquities  
Temple. Chattri. Church. Mosque. Igath. Tomb. Graves  
Lighthouse. Lightship. Buoy: lighted; unlighted. Anchorage  
Mine. Vine on walls. Grass. Scrub  
Palms: palmiers; other. Plantain. Conifer. Bamboo. Other trees  
Areas: cultivated; wooded. Surveyed tree  
Boundary, international  
state: demarcated; undemarcated  
district: subdivision; tahsil or taluk; forest  
Boundary pillars: surveyed; uncollocated  
Heights: triangulated; station; point; approximate  
Bench-mark: geodetic; tertiary; canal  
Post office. Overhead tank  
Rest house or inspection bungalow. Circuit house. Police station  
Camping ground. Forest: reserved; protected  
Spaced names: administrative; locality or tribal  
Hospital. Dispensary. Veterinary: Hospital / Dispensary  
Aerodrome. Helipad. Tourist site  
Power line: with pylons surveyed; with poles unsurveyed

#### NOTES :-

Heights and Contours have not been shown  
A relative height, e.g., & represents the approximate height, in metres, between the top and bottom of a steep slope.  
Tanks, in this area usually contain water from July to November.  
In areas, where no tube-well exists cultivation is periodic and dependent on rainfall.  
Numerous field bunds of less than 2 metres in heights occur throughout the cultivated area.

#### COMPILATION INDEX

A. Surveyed during 1987-88. Updated for major details during 2004-05.



Projection - UTM Datum - WGS 84

Magnetic Variation from True North about 1/4 West in 2005.  
(Decreasing by about 1' annually).

1:50,000

500 m to 1 cm 2 cm to 1 km  
Metres 1000 500 0 1 2 3 Kilometres

For further details about this map, please contact

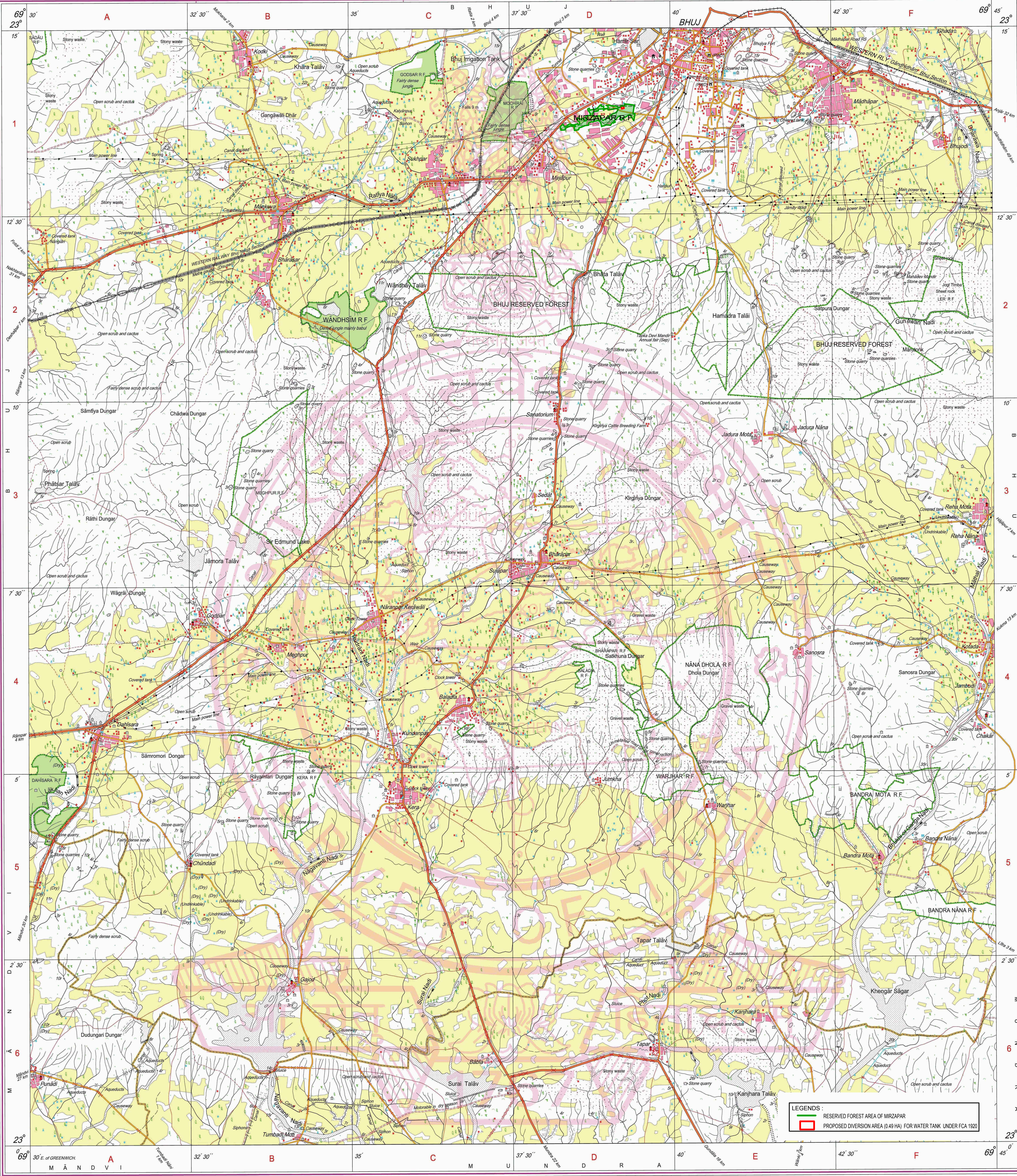
Director  
Gujarat, Daman & Diu Geo-Spatial Data Centre  
Survey of India, Sector-10(A)  
Gandhinagar.

WEBSITE - www.surveyofindia.gov.in

Reproduction in whole or part by any means is prohibited  
without the written permission of Survey of India, the  
National Mapping Agency.



GOVERNMENT OF INDIA COPYRIGHT, 2010.



REG. No. 908 - SPG D'12 (GD&D 1:50,000)-1508-15

भारत के मानचित्र, सर्वेक्षण विभाग, भारत, के निर्माण में प्रयोग,  
Published under the direction of Swami Subba Rao, D.E. Surveyor General of India,  
Survey of India, Hattibarkala Estate, Post Box No. 37, Dehra Dun-248001 (Uttarakhand)  
Department of Science & Technology, Government of India.

PRINTED AT THE SOUTHERN PRINTING GROUP OF SURVEY OF INDIA.