

MAP SHOWIG ALTERNATIVE ROUTE FOR PIPELINE PASSING THROUGH SY NO.5 OF BASAVANAPURA & SY NO15 OF KALKERE VILLAGE, FROM EXISTING PIPELINE TO NIMHANS IN SAKALAVARA VILLAGE, ANEKAL TALUK BENGALURU URBAN DISTRICT, WITH TOPO MAP AS A BASE LAYER.

Legend

ROUTE 1

Non Forest

EXISTING PIPELINE

Forest Pipeline

ROUTE 2

Existing Pipeline

NIMHANS_Boudries

Proposed Pipeline

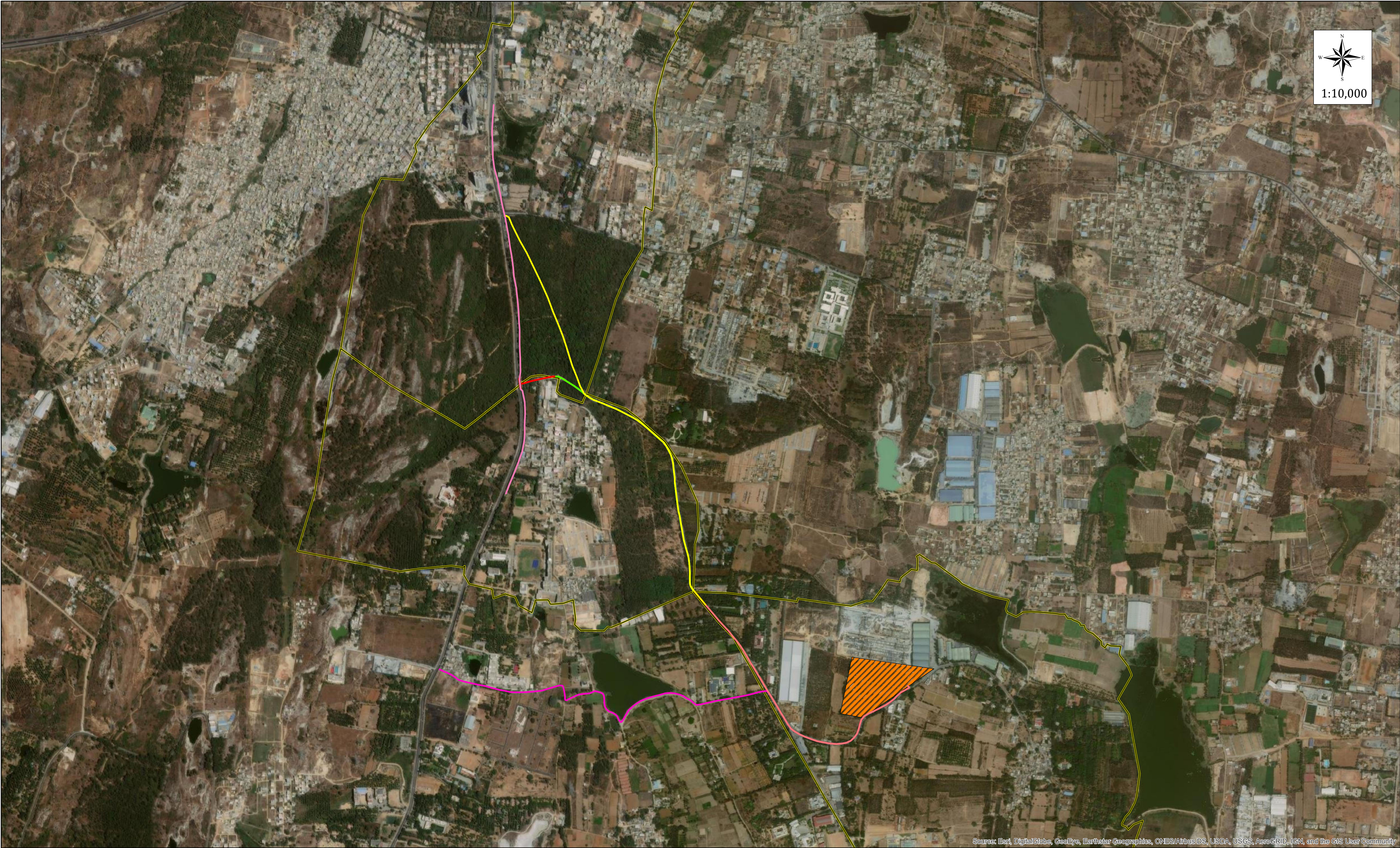
Basavanapura Forest Pipeline

Kalkere Forest Pipeline

Kalkere Non-Forest Pipeline

Sakalavara Non-Forest Pipeline

Village_Boundaries



Sources: Esri, DigitalGlobe, GeoEye, Earthstar Geographics, CNES/Airbus DS, USDA, USGS, AeroGRID, IGN, and the GIS User Community

MAP SHOWIG ALTERNATIVE ROUTE FOR PIPELINE PASSING THROUGH SY NO.5 OF BASAVANAPURA & SY NO15 OF KALKERE VILLAGE, FROM EXISTING PIPELINE TO NIMHANS IN SAKALAVARA VILLAGE, ANEKAL TALUK BENGALURU URBAN DISTRICT, WITH TOPO MAP AS A BASE LAYER.

Legend

ROUTE 1

Non Forest

EXISTING PIPELINE

Forest Pipeline

ROUTE 2

Existing Pipeline

NIMHANS_Boundries

Proposed Pipeline

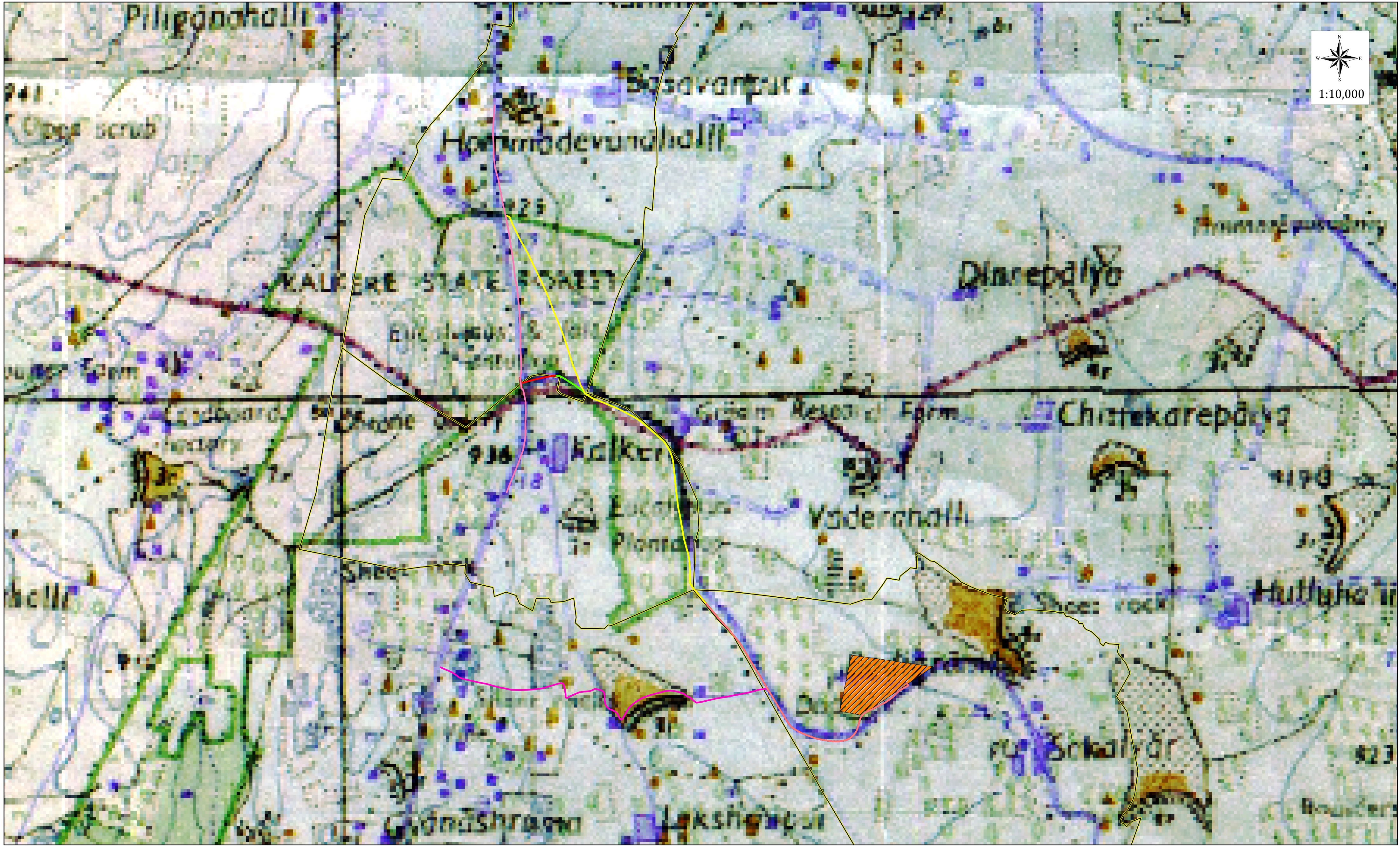
Basavanapura Forest Pipeline

Kalkere Forest Pipeline

Kalkere Non-Forest Pipeline

Sakalavara Non-Forest Pipeline

Village_Boundaries



MAP SHOWIG ALTERNATIVE ROUTE FOR PIPELINE PASSING THROUGH SY NO.5 OF BASAVANAPURA & SY NO15 OF KALKERE VILLAGE, FROM EXISTING PIPELINE TO NIMHANS IN SAKALAVARA VILLAGE, ANEKAL TALUK BENGALURU URBAN DISTRICT, WITH TOPO MAP AS A BASE LAYER.

Legend

ROUTE 1

- Non Forest
- EXISTING PIPELINE
- Forest Pipeline
- ROUTE 2
- Existing Pipeline
- NIMHANS_Boundries

Proposed Pipeline

- Basavanapura Forest Pipeline
- Kalkere Forest Pipeline
- Kalkere Non-Forest Pipeline
- Sakalavara Non-Forest Pipeline
- Village_Boundaries