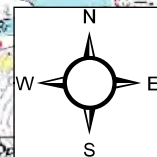


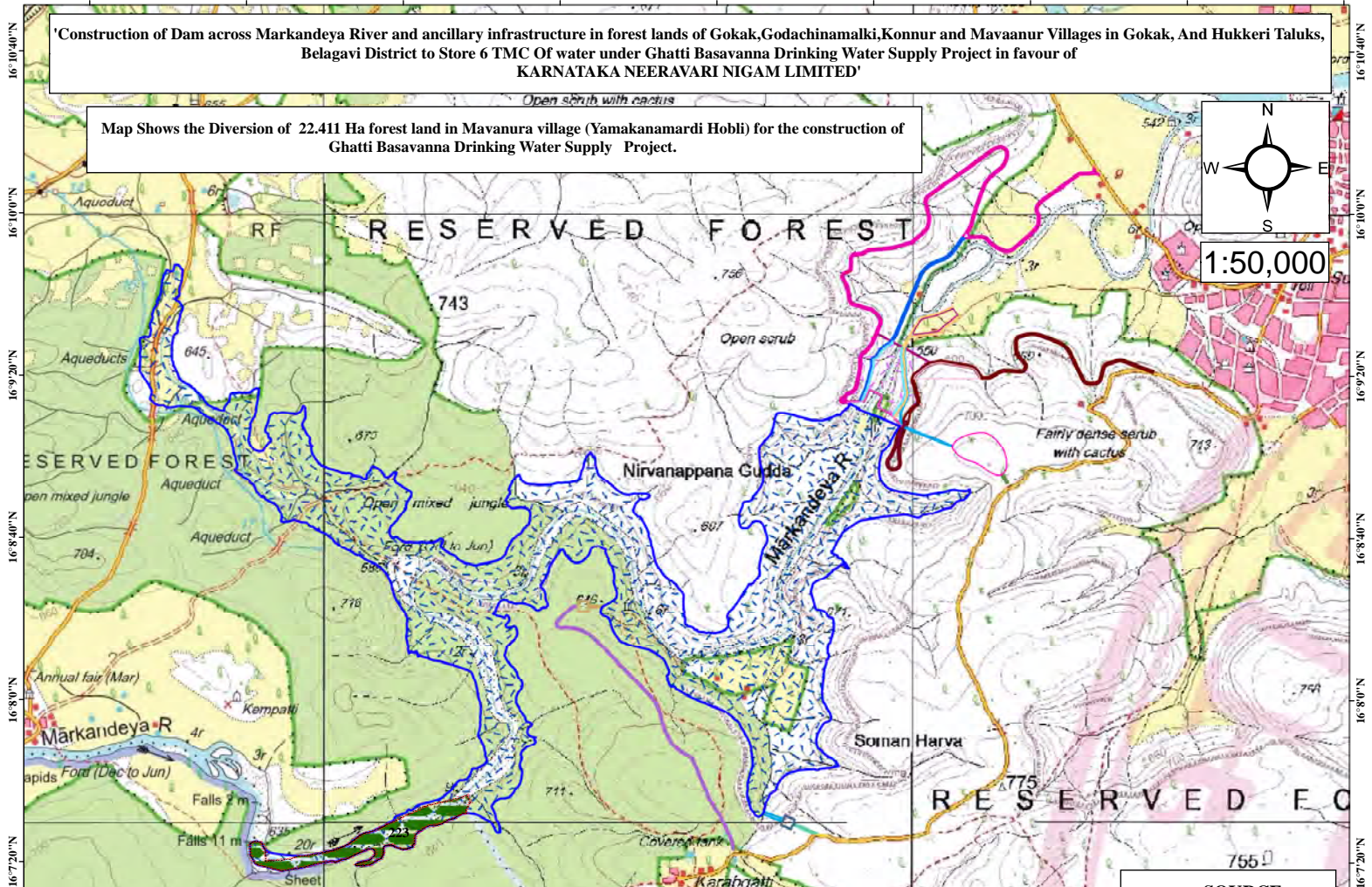
74°44'0"E 74°44'40"E 74°45'20"E 74°46'0"E 74°46'40"E 74°47'20"E 74°48'0"E 74°48'40"E 74°49'20"E

'Construction of Dam across Markandeya River and ancillary infrastructure in forest lands of Gokak, Godachinamalki, Konnur and Mavaanur Villages in Gokak, And Hukkeri Taluks, Belagavi District to Store 6 TMC Of water under Ghatti Basavanna Drinking Water Supply Project in favour of KARNATAKA NEERAVARI NIGAM LIMITED'

Map Shows the Diversion of 22.411 Ha forest land in Mavanura village (Yamakanamardi Hobli) for the construction of Ghatti Basavanna Drinking Water Supply Project.

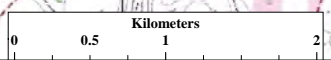


1:50,000



Sl.No	District	Taluk	Village	Sy.No	Area (Ha)	Component	As per RTC status	As per Working Plan Status
1	Belagavi	Hukkeri	Mavanura	223	22.411	Submergence	Forest	Working Plan not available
Total					22.411			

SOURCE  
SSLR AND K- GIS  
Toposheet-47L12/47L16



AUTHORISED SIGNATURE

EXECUTIVE ENGINEER,  
KARNATAKA NEERAVARI NIGAM LIMITED  
GRBC DN. NO. 3, GOKAK

Legend

- Gps Corner And 20 Mt Interval Co-Ordinate Points
- Mavanura Forest Land
- Submergence
- Approach Road 1
- Approach Road 3
- Approach Road 4
- Approach Road 2
- Approach Road 5
- Approach Road 6
- Approach Road 7
- Foot Bridge
- Landing
- Retaining Wall
- Steps
- Dam Office And Guest House
- Dam Site
- Dam View Point
- Treatment Plant
- Utility
- Impounding Reservoir

PREPARED BY:

IQC/NARE T Accredited & ISO 9001:2008  
Certified Organization, No 17A, 14th 'E' Cross,  
Agarapura Dharwad, Rajajinagar,  
Bangalore - 560 016.  
Tels: 686-23016200, Fax: 686-23012111  
mail: shashibhargava@ehsc.com shashibhargava1974@gmail.com  
Web: www.ehsc.in

74°44'0"E 74°44'40"E 74°45'20"E 74°46'0"E 74°46'40"E 74°47'20"E 74°48'0"E 74°48'40"E 74°49'20"E

74°44'0"E

74°44'40"E

74°45'20"E

74°46'0"E

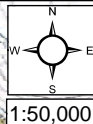
74°46'40"E

16°8'40"N

16°8'40"N

'Construction of Dam across Markandeya River and ancillary infrastructure in forest lands of Gokak, Godachinamalki, Konnur and Mavanur Villages in Gokak, And Hukkeri Taluqs, Belagavi District to Store 6 TMC of water under Ghatti Basavanna Drinking Water Supply Project in favour of KARNATAKA NEERAVARI NIGAM LIMITED'

Division of 22,411 Ha forest land in Mavanura village (Yamakanamardi Hobli) for the construction of Ghatti Basavanna Drinking Water Supply Project.



16°8'0"N

16°8'0"N

16°7'20"N

16°7'20"N

16°6'40"N

16°6'40"N

16°6'0"N

16°6'0"N



Sl.No	District	Taluk	Village	Sy.No	Area (Ha)	Component	As per RTC status	As per Working Plan Status
1	Belagavi	Hukkeri	Mavanura	223	22,411	Submergence	Forest	Working Plan not available
Total					22,411			

SOURCE  
SSLR AND K- GIS  
Toposheet-47L12/47L16

PREPARED BY:



ISO 9001:2015 Accredited & ISO 14001:2015  
Certified Organisation, No. 7A, 1st & 2nd Floor,  
Agarwal Dwaraki, Rajajinagar  
Bangalore - 560 016  
Tel: 088-2464206, Fax: 088-2361211  
mail:ehsr@yahoocom,ehsr1974@gmail.com  
Web: www.ehsr.in

AUTHORISED SIGNATURE

  
EXECUTIVE ENGINEER,  
KARNATAKA NEERAVARI NIGAM LIMITED  
GRBGO DN. NO. 3, GOKAK

### Legend

Gps Corner And 20 Mt Interval Co- Ordinate Points



74°44'0"E

74°44'40"E

74°45'20"E

74°46'0"E

74°46'40"E