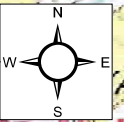


74°45'0"E

74°47'30"E

'Construction of Dam across Markandeya River and ancillary infrastructure in forest lands of Gokak,Godachinamalki,Konnur and Mavaanur Villages in Gokak, And Hukkeri Taluks, Belagavi District to Store 6 TMC Of water under Ghatti Basavanna Drinking Water Supply Project in favour of KARNATAKA NEERAVARI NIGAM LIMITED'

Map Shows the Diversion of 388.041246 Ha of Forest And 38.691912 Ha of Non forest land in Gokak, 120.743571 Ha of forest land in Konnura,43.879107 Ha of Godachinamalki Villages for the construction of Ghatti Basavanna Drinking Water Supply Project .



1:50,000

16°10'0"N

16°10'0"N

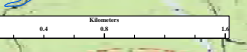
16°7'30"N

16°7'30"N

SOURCE  
SSLR AND K- GIS  
SOI TOPOSHEET  
47L12,47L16

Sl.No	Length in M	Width in M	Area in Ha	Component
1	40	15	0.01131199	Approach Road 1
2	2000	15	0.0462712	Approach Road 2
3	723.5	15	0.0165405	Approach Road 3
4	1346.5	15	0.0313444	Approach Road 4
5	751.5	15	0.0165405	Approach Road 5
6	440	15	0.0107561	Approach Road 6
7	1406.5	15	0.0325309	Approach Road 7
8	2375	20	0.0489577	Land Use Land
9	131.5	15	0.0031031	Approach Road 8
10	516.66	6	0.0184955	State Vaidik Milkamam Land
11	383.5	15	0.0087189	Approach Road 9
12	1400	15	0.0392554	Approach Road 10
13	383.5	6	0.0125565	State Land To Don View Point
14	406.7	8	0.027078	State Land To Don View Point
15	813.5	1.5	0.0018279	Reservoir Wall Behind Aft
16	613.5	15	0.0202101	Approach Road 11
17	2000	15	0.0451078	Approach Road 12
18	92.5	30	0.0027618	Foot Bridge
19	10000	15	0.0000000	Approach Road 13
200	10000	15	0.0000000	Approach Road 14
Total			0.4833464	

Sl.No	District	Tahsil	Village	Sy.No	Area (Ha)	Component	As per RTC status	As per Working Plan Status
1	Belagavi	Gokak	Konnur	678	0.010345	Submergence	Forest	Reserve forest
2				676	38.7315	Submergence	Forest	Reserve forest
3				673	1.26982	Submergence	Forest	Reserve forest
4				684	0.0794	Submergence	Forest	Reserve forest
5				684	0.005905	Submergence	Forest	Reserve forest
6				677	36.4251	Submergence	Forest	Reserve forest
7				677	0.011508	Submergence	Forest	Reserve forest
8				677	0.000993	Submergence	Forest	Reserve forest
9				675	1.7305	Submergence	Forest	Reserve forest
10				675	4.24319	Submergence	Forest	Reserve forest
Total					120.743571			



Sl.No	District	Tahsil	Village	Sy.No	Area (Ha)	Component	As per RTC status	As per Working Plan Status
1	Belagavi	Gokak	Konnur	678	0.010345	Submergence	Forest	Reserve forest
2				676	38.7315	Submergence	Forest	Reserve forest
3				673	1.26982	Submergence	Forest	Reserve forest
4				684	0.0794	Submergence	Forest	Reserve forest
5				684	0.005905	Submergence	Forest	Reserve forest
6				677	36.4251	Submergence	Forest	Reserve forest
7				677	0.011508	Submergence	Forest	Reserve forest
8				677	0.000993	Submergence	Forest	Reserve forest
9				675	1.7305	Submergence	Forest	Reserve forest
10				675	4.24319	Submergence	Forest	Reserve forest
Total					120.743571			

Sl.No	District	Tahsil	Village	Sy.No	Area (Ha)	Component	As per RTC status	As per Working Plan Status
402				2200554		Approach Road 1	Forest	Reserve forest
403				0.000113		Approach Road 1	Forest	Reserve forest
404				2200554		Approach Road 1	Forest	Reserve forest
405				1.12566		Approach Road 1	Forest	Reserve forest
406				0.0114		Approach Road 1	Forest	Reserve forest
407				1.00147		Approach Road 1	Forest	Reserve forest
408				1.00147		Approach Road 1	Forest	Reserve forest
409				0.00147		Approach Road 1	Forest	Reserve forest
410				0.00147		Approach Road 1	Forest	Reserve forest
411				0.00147		Approach Road 1	Forest	Reserve forest
412				0.00147		Approach Road 1	Forest	Reserve forest
413				0.00147		Approach Road 1	Forest	Reserve forest
414				0.00147		Approach Road 1	Forest	Reserve forest
415				0.00147		Approach Road 1	Forest	Reserve forest
416				0.00147		Approach Road 1	Forest	Reserve forest
417				0.00147		Approach Road 1	Forest	Reserve forest
418				0.00147		Approach Road 1	Forest	Reserve forest
419				0.00147		Approach Road 1	Forest	Reserve forest
420				0.00147		Approach Road 1	Forest	Reserve forest
421				0.00147		Approach Road 1	Forest	Reserve forest
422				0.00147		Approach Road 1	Forest	Reserve forest
423				0.00147		Approach Road 1	Forest	Reserve forest
424				0.00147		Approach Road 1	Forest	Reserve forest
425				0.00147		Approach Road 1	Forest	Reserve forest
426				0.00147		Approach Road 1	Forest	Reserve forest
427				0.00147		Approach Road 1	Forest	Reserve forest
428				0.00147		Approach Road 1	Forest	Reserve forest
429				0.00147		Approach Road 1	Forest	Reserve forest
430				0.00147		Approach Road 1	Forest	Reserve forest
431				0.00147		Approach Road 1	Forest	Reserve forest
432				0.00147		Approach Road 1	Forest	Reserve forest
433				0.00147		Approach Road 1	Forest	Reserve forest
434				0.00147		Approach Road 1	Forest	Reserve forest
435				0.00147		Approach Road 1	Forest	Reserve forest
436				0.00147		Approach Road 1	Forest	Reserve forest
437				0.00147		Approach Road 1	Forest	Reserve forest
438				0.00147		Approach Road 1	Forest	Reserve forest
439				0.00147		Approach Road 1	Forest	Reserve forest
440				0.00147		Approach Road 1	Forest	Reserve forest
441				0.00147		Approach Road 1	Forest	Reserve forest
442				0.00147		Approach Road 1	Forest	Reserve forest
443				0.00147		Approach Road 1	Forest	Reserve forest
444				0.00147		Approach Road 1	Forest	Reserve forest
445				0.00147		Approach Road 1	Forest	Reserve forest
446				0.00147		Approach Road 1	Forest	Reserve forest
447				0.00147		Approach Road 1	Forest	Reserve forest
448				0.00147		Approach Road 1	Forest	Reserve forest
449				0.00147		Approach Road 1	Forest	Reserve forest
450				0.00147		Approach Road 1	Forest	Reserve forest
451				0.00147		Approach Road 1	Forest	Reserve forest
452				0.00147		Approach Road 1	Forest	Reserve forest
453				0.00147		Approach Road 1	Forest	Reserve forest
454				0.00147		Approach Road 1	Forest	Reserve forest
Total					388.041246			

AUTHORISED SIGNATURE

  
EXECUTIVE ENGINEER,  
KARNATAKA NEERAVARI NIGAM LIMITED  
GRBCC DN. NO. 3, GOKAK

Legend

- GodachinaMalki Gps Corner and 20 Mt interval Co-ordinate points
- Konnuru Gps Corner and 20 Mt interval Co-ordinate points
- Gokak Gps Corner and 20 Mt interval Co-ordinate points
- Gokak Forest Land
- Gokak Non Forest Land
- Bayadarahatti Non Forest Land
- Konnura Forest Land
- Godachinamalki Forest Land
- Approach Roads And Ancillary infraStructure
- Approach Road 1
- Approach Road 3
- Approach Road 4
- Approach Road 2
- Approach Road 5
- Approach Road 6
- Approach Road 7
- Foot Bridge
- Landing
- Retaining Wall
- Steps
- Dam Components
- Dam Office And Guest House
- Dam Site
- Dam View Point
- Treatment Plant
- Utility
- Impounding Reservoir
- Submergence

PREPARED BY:



IOCI-NABET Accredited & ISO 9001:2015  
Certified Organization, No.174, 14th 'E' Cross,  
Aggarah Dasaralli, Rajajinagar  
Bangalore - 560 010.  
Tide: 080-23016200. Fax: 080 23012111  
mail:ehsbc@ehsbc.com/ehsbc1974@gmail.com  
Web: www.ehsc.in

74°45'0"E

74°47'30"E

74°44'0"E

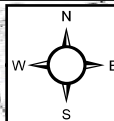
74°45'0"E

74°46'0"E

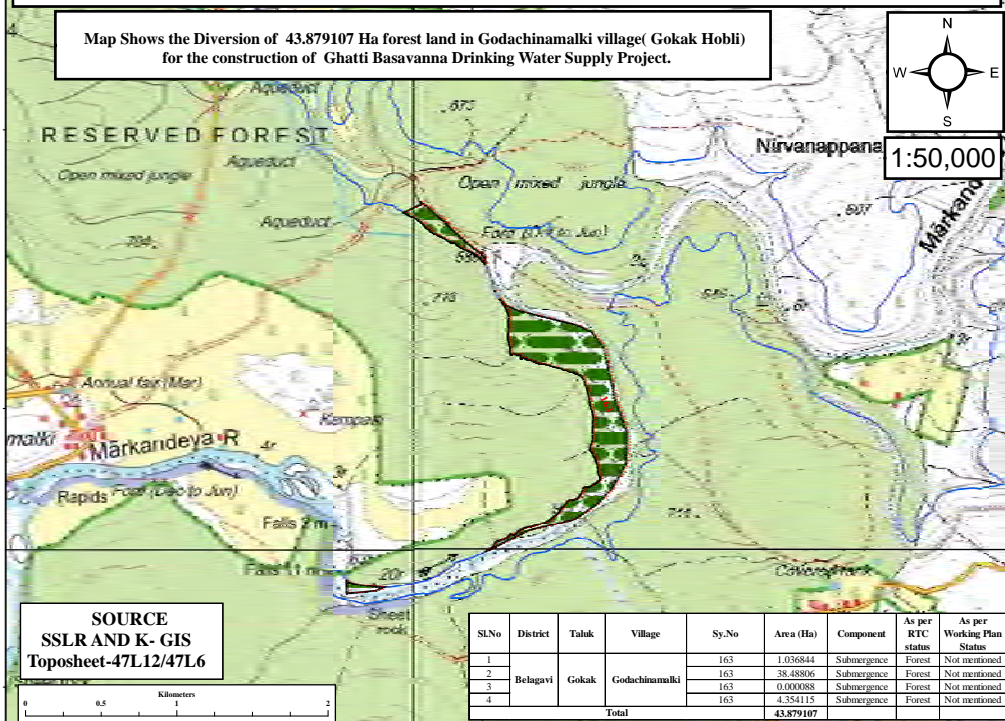
74°47'0"E

'Construction of Dam across Markandeya River and ancillary infrastructure in forest lands of Gokak, Godachinamalki, Konnur and Mavaanur Villages in Gokak, And Hukkeri Taluks, Belagavi District to Store 6 TMC Of water under Ghatti Basavanna Drinking Water Supply Project in favour of KARNATAKA NEERAVARI NIGAM LIMITED'

Map Shows the Division of 43.879107 Ha forest land in Godachinamalki village( Gokak Hobli) for the construction of Ghatti Basavanna Drinking Water Supply Project.



1:50,000



SOURCE  
SSLR AND K- GIS  
Toposheet-47L12/47L6

SLNo	District	Taluk	Village	Sy.No	Area (Ha)	Component	As per RTC status	As per Working Plan Status
1	Belagavi	Gokak	Godachinamalki	163	1.036844	Submergence	Forest	Not mentioned
2				163	38.48806	Submergence	Forest	Not mentioned
3				163	0.000088	Submergence	Forest	Not mentioned
4				163	4.354115	Submergence	Forest	Not mentioned
Total					43.879107			

AUTHORISED SIGNATURE

  
EXECUTIVE ENGINEER,  
KARNATAKA NEERAVARI NIGAM LIMITED  
GRBCC DN. NO. 3, GOKAK

## Legend

- Gps Corner And 20 Mts Interval Coordinate Points
-  Forest Land
  -  Submergence

PREPARED BY:



74°44'0"E

74°45'0"E

74°46'0"E

74°47'0"E

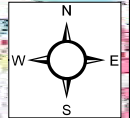


74°45'0"E

74°47'30"E

'Construction of Dam across Markandeya River and ancillary infrastructure in forest lands of Gokak, Godachinamalki, Konnur and Mavaanur Villages in Gokak, And Hukkeri Taluks, Belagavi District to Store 6 TMC Of water under Ghatti Basavanna Drinking Water Supply Project in favour of KARNATAKA NEERAVARI NIGAM LIMITED'

Division of 388.041246 (Ha) of Forest And 38.691912 (Ha) of Non forest land for the construction of Ghatti Basavanna Drinking Water Supply Project .  
Gokak Village/Taluk, Belgaum District.



1:50,000

16°10'0"N

16°10'0"N

16°7'30"N

16°7'30"N

SOURCE  
SSLR AND K- GIS  
SOI TOPOSHEET  
47L12,47L16

Sl. No.	Area (Ha)	Category	Remarks
1	10.00	Forest Land	Approach Road 1
2	20.00	Forest Land	Approach Road 2
3	30.00	Forest Land	Approach Road 3
4	40.00	Forest Land	Approach Road 4
5	50.00	Forest Land	Approach Road 5
6	60.00	Forest Land	Approach Road 6
7	70.00	Forest Land	Approach Road 7
8	80.00	Forest Land	Approach Road 8
9	90.00	Forest Land	Approach Road 9
10	100.00	Forest Land	Approach Road 10
11	110.00	Forest Land	Approach Road 11
12	120.00	Forest Land	Approach Road 12
13	130.00	Forest Land	Approach Road 13
14	140.00	Forest Land	Approach Road 14
15	150.00	Forest Land	Approach Road 15
16	160.00	Forest Land	Approach Road 16
17	170.00	Forest Land	Approach Road 17
18	180.00	Forest Land	Approach Road 18
19	190.00	Forest Land	Approach Road 19
20	200.00	Forest Land	Approach Road 20
21	210.00	Forest Land	Approach Road 21
22	220.00	Forest Land	Approach Road 22
23	230.00	Forest Land	Approach Road 23
24	240.00	Forest Land	Approach Road 24
25	250.00	Forest Land	Approach Road 25
26	260.00	Forest Land	Approach Road 26
27	270.00	Forest Land	Approach Road 27
28	280.00	Forest Land	Approach Road 28
29	290.00	Forest Land	Approach Road 29
30	300.00	Forest Land	Approach Road 30
31	310.00	Forest Land	Approach Road 31
32	320.00	Forest Land	Approach Road 32
33	330.00	Forest Land	Approach Road 33
34	340.00	Forest Land	Approach Road 34
35	350.00	Forest Land	Approach Road 35
36	360.00	Forest Land	Approach Road 36
37	370.00	Forest Land	Approach Road 37
38	380.00	Forest Land	Approach Road 38
39	390.00	Forest Land	Approach Road 39
40	400.00	Forest Land	Approach Road 40
41	410.00	Forest Land	Approach Road 41
42	420.00	Forest Land	Approach Road 42
43	430.00	Forest Land	Approach Road 43
44	440.00	Forest Land	Approach Road 44
45	450.00	Forest Land	Approach Road 45
46	460.00	Forest Land	Approach Road 46
47	470.00	Forest Land	Approach Road 47
48	480.00	Forest Land	Approach Road 48
49	490.00	Forest Land	Approach Road 49
50	500.00	Forest Land	Approach Road 50
51	510.00	Forest Land	Approach Road 51
52	520.00	Forest Land	Approach Road 52
53	530.00	Forest Land	Approach Road 53
54	540.00	Forest Land	Approach Road 54
55	550.00	Forest Land	Approach Road 55
56	560.00	Forest Land	Approach Road 56
57	570.00	Forest Land	Approach Road 57
58	580.00	Forest Land	Approach Road 58
59	590.00	Forest Land	Approach Road 59
60	600.00	Forest Land	Approach Road 60
61	610.00	Forest Land	Approach Road 61
62	620.00	Forest Land	Approach Road 62
63	630.00	Forest Land	Approach Road 63
64	640.00	Forest Land	Approach Road 64
65	650.00	Forest Land	Approach Road 65
66	660.00	Forest Land	Approach Road 66
67	670.00	Forest Land	Approach Road 67
68	680.00	Forest Land	Approach Road 68
69	690.00	Forest Land	Approach Road 69
70	700.00	Forest Land	Approach Road 70
71	710.00	Forest Land	Approach Road 71
72	720.00	Forest Land	Approach Road 72
73	730.00	Forest Land	Approach Road 73
74	740.00	Forest Land	Approach Road 74
75	750.00	Forest Land	Approach Road 75
76	760.00	Forest Land	Approach Road 76
77	770.00	Forest Land	Approach Road 77
78	780.00	Forest Land	Approach Road 78
79	790.00	Forest Land	Approach Road 79
80	800.00	Forest Land	Approach Road 80
81	810.00	Forest Land	Approach Road 81
82	820.00	Forest Land	Approach Road 82
83	830.00	Forest Land	Approach Road 83
84	840.00	Forest Land	Approach Road 84
85	850.00	Forest Land	Approach Road 85
86	860.00	Forest Land	Approach Road 86
87	870.00	Forest Land	Approach Road 87
88	880.00	Forest Land	Approach Road 88
89	890.00	Forest Land	Approach Road 89
90	900.00	Forest Land	Approach Road 90
91	910.00	Forest Land	Approach Road 91
92	920.00	Forest Land	Approach Road 92
93	930.00	Forest Land	Approach Road 93
94	940.00	Forest Land	Approach Road 94
95	950.00	Forest Land	Approach Road 95
96	960.00	Forest Land	Approach Road 96
97	970.00	Forest Land	Approach Road 97
98	980.00	Forest Land	Approach Road 98
99	990.00	Forest Land	Approach Road 99
100	1000.00	Forest Land	Approach Road 100

Legend

Forest Land

Non Forest Land

Gps Corner and 20 Mt interval Co-ordinate points

Approach Roads And Ancillary infrastructure

Approach Road 1

Approach Road 2

Approach Road 3

Approach Road 4

Approach Road 5

Approach Road 6

Approach Road 7

Approach Road 8

Approach Road 9

Approach Road 10

Approach Road 5

Approach Road 6

Approach Road 7

Approach Road 8

Approach Road 9

Approach Road 10

Approach Road 11

Approach Road 12

Approach Road 13

Approach Road 14

Approach Road 15

Approach Road 16

Approach Road 17

Approach Road 18

Approach Road 19

Approach Road 20

Approach Road 21

Approach Road 22

Approach Road 23

Approach Road 24

Approach Road 25

Approach Road 26

Approach Road 27

Approach Road 28

Approach Road 29

Approach Road 30

Approach Road 31

Approach Road 32

Approach Road 33

Approach Road 34

Approach Road 35

Approach Road 36

Approach Road 37

Approach Road 38

Approach Road 39

Approach Road 40

Approach Road 41

Approach Road 42

Approach Road 43

Approach Road 44

Approach Road 45

Approach Road 46

Approach Road 47

Approach Road 48

Approach Road 49

Approach Road 50

Approach Road 51

Approach Road 52

Approach Road 53

Approach Road 54

Approach Road 55

Approach Road 56

Approach Road 57

Approach Road 58

Approach Road 59

Approach Road 60

Approach Road 61

Approach Road 62

Approach Road 63

Approach Road 64

Approach Road 65

Approach Road 66

Approach Road 67

Approach Road 68

Approach Road 69

Approach Road 70

Approach Road 71

Approach Road 72

Approach Road 73

Approach Road 74

Approach Road 75

Approach Road 76

Approach Road 77

Approach Road 78

Approach Road 79

Approach Road 80

Approach Road 81

Approach Road 82

Approach Road 83

Approach Road 84

Approach Road 85

Approach Road 86

Approach Road 87

Approach Road 88

Approach Road 89

Approach Road 90

Approach Road 91

Approach Road 92

Approach Road 93

Approach Road 94

Approach Road 95

Approach Road 96

Approach Road 97

Approach Road 98

Approach Road 99

Approach Road 100

Approach Road 101

Approach Road 102

Approach Road 103

Approach Road 104

Approach Road 105

Approach Road 106

Approach Road 107

Approach Road 108

Approach Road 109

Approach Road 110

Approach Road 111

Approach Road 112

Approach Road 113

Approach Road 114

Approach Road 115

Approach Road 116

Approach Road 117

Approach Road 118

Approach Road 119

Approach Road 120

Approach Road 121

Approach Road 122

Approach Road 123

Approach Road 124

Approach Road 125

Approach Road 126

Approach Road 127

Approach Road 128

Approach Road 129

Approach Road 130

Approach Road 131

Approach Road 132

Approach Road 133

Approach Road 134

Approach Road 135

Approach Road 136

Approach Road 137

Approach Road 138

Approach Road 139

Approach Road 140

Approach Road 141

Approach Road 142

Approach Road 143

Approach Road 144

Approach Road 145

Approach Road 146

Approach Road 147

Approach Road 148

Approach Road 149

Approach Road 150

Approach Road 151

Approach Road 152

Approach Road 153

Approach Road 154

Approach Road 155

Approach Road 156

Approach Road 157

Approach Road 158

Approach Road 159

Approach Road 160

Approach Road 161

Approach Road 162

Approach Road 163

Approach Road 164

Approach Road 165

Approach Road 166

Approach Road 167

Approach Road 168

Approach Road 169

Approach Road 170

Approach Road 171

Approach Road 172

Approach Road 173

Approach Road 174

Approach Road 175

Approach Road 176

Approach Road 177

Approach Road 178

Approach Road 179

Approach Road 180

Approach Road 181

Approach Road 182

Approach Road 183

Approach Road 184

Approach Road 185

Approach Road 186

Approach Road 187

74°43'30"E

74°45'0"E

74°46'30"E

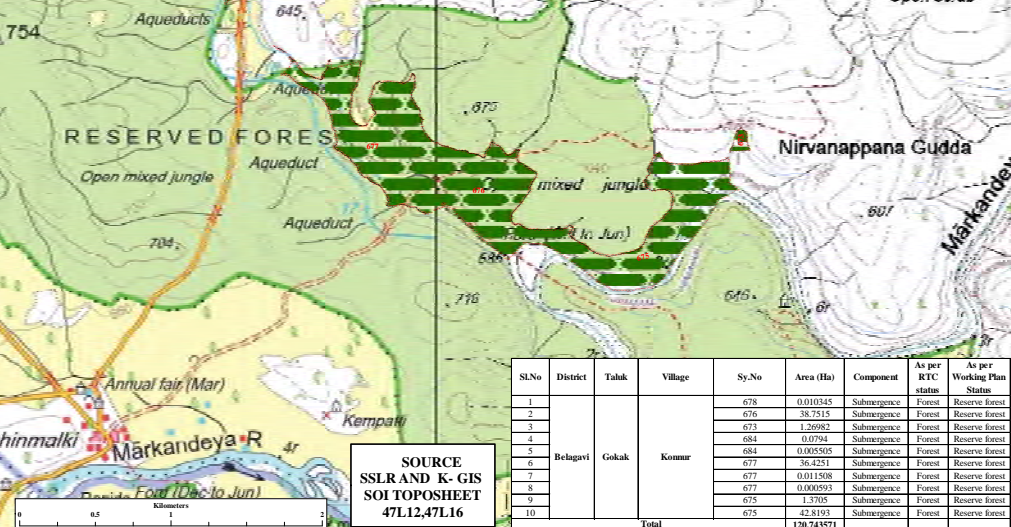
'Construction of Dam across Markandeya River and ancillary infrastructure in forest lands of Gokak, Godachinamalki, Konnur and Mavaanur Villages in Gokak, And Hukkeri Taluqs, Belagavi District to Store 6 TMC Of water under Ghatti Basavanna Drinking Water Supply Project in favour of KARNATAKA NEERAVARI NIGAM LIMITED'

Map Shows The Diversion of 120.743517 (Ha) of Forest Land for the construction of Ghatti Basavanna Drinking Water Supply Project. Konnur Village, Gokak Taluk, Belgaum District.



1:50,000

Open scrub



Sl.No	District	Taluk	Village	Sy.No	Area (Ha)	Component	As per RTC status	As per Working Plan Status
1	Belagavi	Gokak	Konnur	678	0.010345	Submergence	Forest	Reserve forest
2				676	38.7515	Submergence	Forest	Reserve forest
3				673	1.26962	Submergence	Forest	Reserve forest
4				684	0.0794	Submergence	Forest	Reserve forest
5				684	0.005505	Submergence	Forest	Reserve forest
6				677	36.4251	Submergence	Forest	Reserve forest
7				677	0.011508	Submergence	Forest	Reserve forest
8				677	0.000593	Submergence	Forest	Reserve forest
9				675	1.3705	Submergence	Forest	Reserve forest
10				675	42.8193	Submergence	Forest	Reserve forest
Total					120.743571			

SOURCE  
SSL AND K- GIS  
SOI TOPOSHEET  
47L12,47L16

AUTHORISED SIGNATURE

EXECUTIVE ENGINEER,  
KARNATAKA NEERAVARI NIGAM LIMITED  
GRBCC DN. NO. 3, GOKAK

Legend



Forest Land



Submergence

Gps Corner And 20 Mt Interval Co-Ordinate Points

PREPARED BY:



GOVERNMENT OF KARNATAKA  
Certified Organization, No. 174, 14th 'E' Cross,  
Agrahara Bazar, Rajajinagar  
Bangalore - 560 016  
Toll: 080-23012200; Fax: 080-23012311  
mail:vehsc@gp.gov.in; web:vehsc.org  
Web: www.vehsc.org

74°43'30"E

74°45'0"E

74°46'30"E