

**Goras to Shyampur Raod**

**Goras Bypass**

**Indicating Location of Alternative  
Examined**

# SIGNIFICANCE

- Improves direct connectivity between Three states Madhya Pradesh, Rajsthan & Uttar Pradesh
- NH 552 Ext. Start from its junction with NH-52 near Tonk (Raj.) which Provide Connectivity (Jaipur-Kota Road) & Terminating at its junction with NH-27 (East-West Corridor) near Chirgaon in the state of Uttar Pradesh
- Project Road Starts From Near Goras at Existing Ch. 51+750 and terminates at Existing Ch.-121+250 Near Shyampur.
- Project Road Connects to NH -44 ( North-South Corridor) which Provide Connectivity (Agra-Gwalior-Jhansi) & Also Provide Connectivity for Guna-Indore Via NH-46.
- Project Road Connects MP/RJ Border Which Provide Connectivity to Sawai Madhopur Which is a major tourism place Ranthambhre National Park
- Due to Poor Geometry bypass has proposed in Goras. Proposed Bypasses (Goras) Alignment will provide the connectivity outside of the cities/town/village, which will help to move traffic freely without entering into the cities/town/village and removes the traffic congestion.

# PRESENT STATUS OF GORAS TOWN

## Silent features of Highway in Goras town

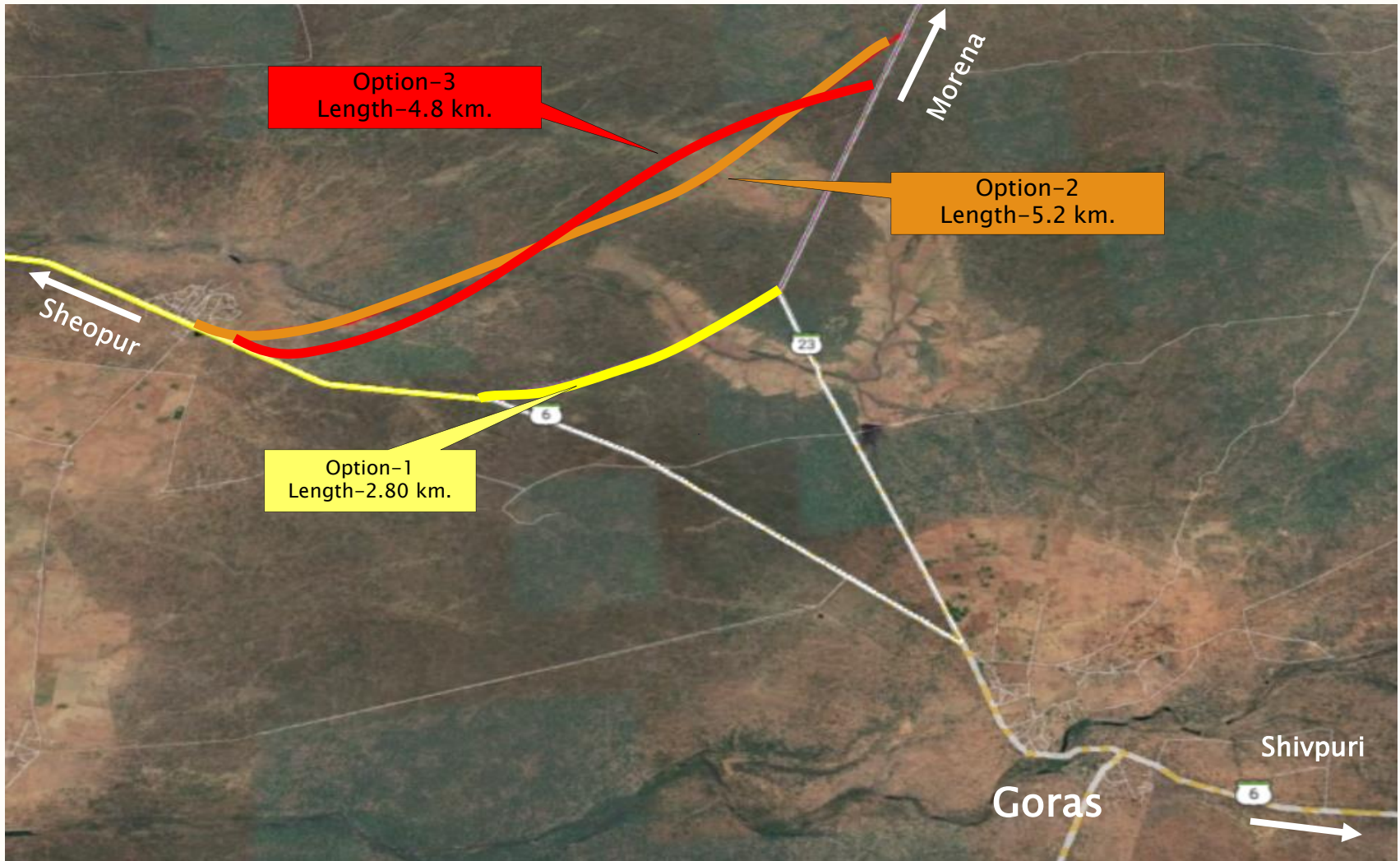
- |                                   |                            |
|-----------------------------------|----------------------------|
| 1. Carriageway                    | -5.50 m.                   |
| 2. Shoulder width                 | -1.5 -2.0 m.               |
| 3. Length of Town start to end    | -.80 km (Approx.)          |
| 4. Available ROW                  | - 12 m.                    |
| 5. Type of properties will affect | - Residential & Commercial |





# GORAS SELECTED BYPASS

There are alignment are marked on Google Map



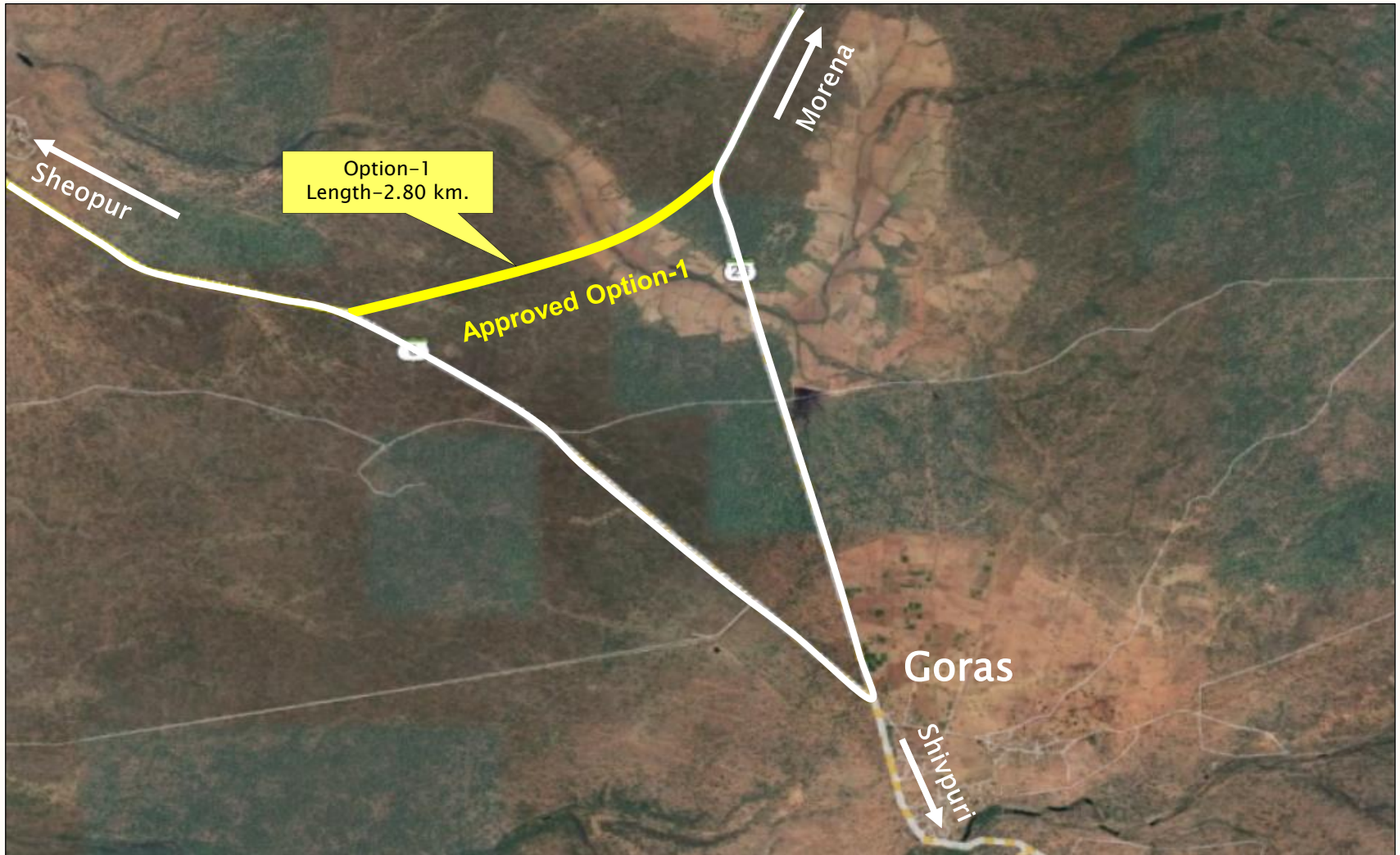
# GORAS BYPASS DETAIL

## Alignment-I

This proposed alignment started at the Existing Km 51+750 of NH-552ext. at near of Goras village will passing through Left side of existing NH-552ext and ends at the Existing Km 60+550. The total length of existing stretch is 8.8 Kms, which is to be covered by proposed bypass alignment 1st of length 2.80 km. This alignment crosses the one river and passing through forest and agriculture area.

# GORAS BYPASS OPTION -I

Alignment- I is showing on Google map





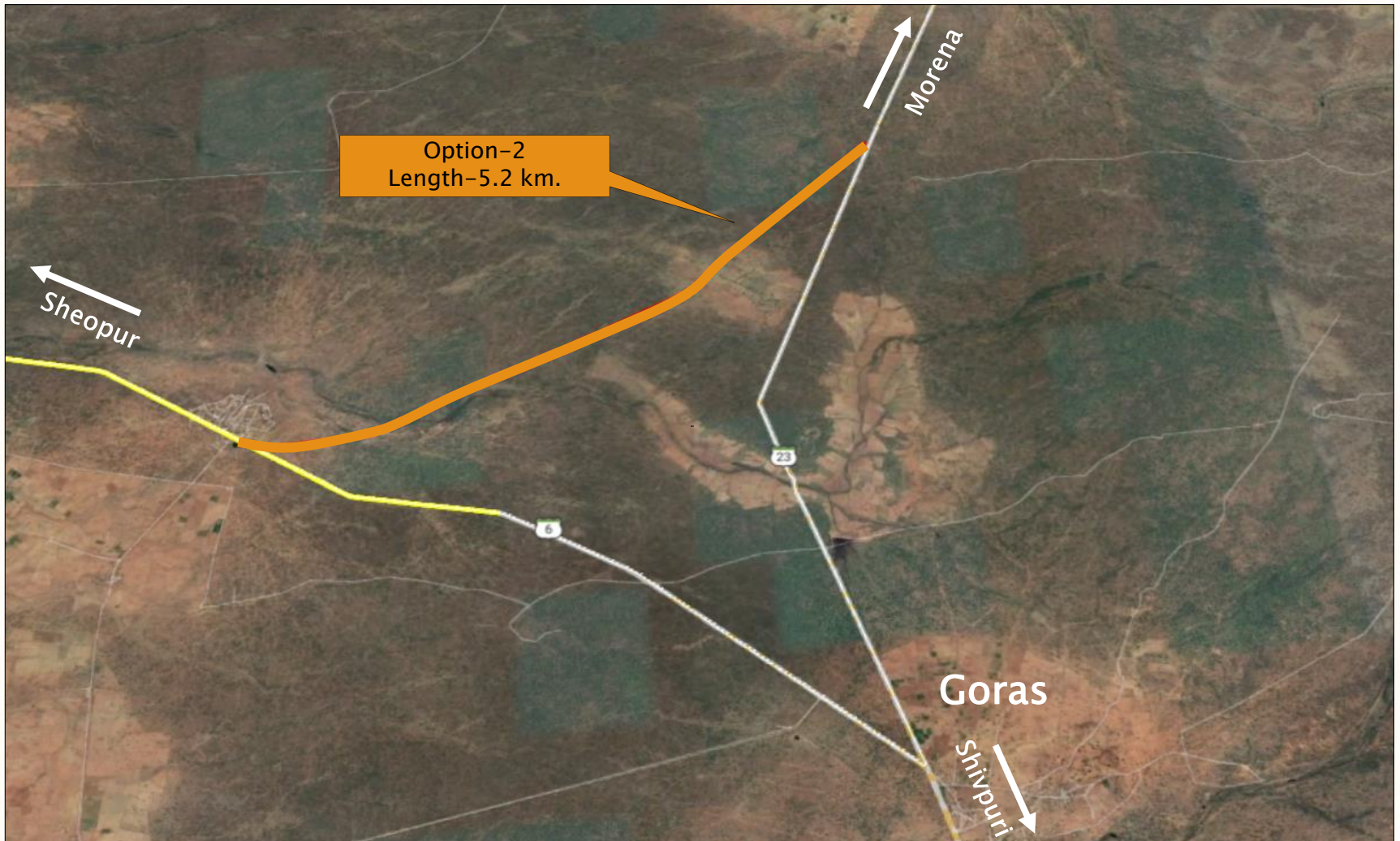
# GORAS BYPASS DETAIL

## Alignment-II

This proposed alignment started at the Existing Km 49+500 of NH-552Ext. will passing through left side of existing NH-552Ext. and ends at the Existing Km 61+650. The total length of existing stretch is 12.0 kms, which is to be covered by proposed bypass alignment-2 of length 7.2 Kms. This alignment crosses the one river and maximum part of alignment passing through Forest .

# GORAS BYPASS OPTION-II

Alignment -II is showing on Google map





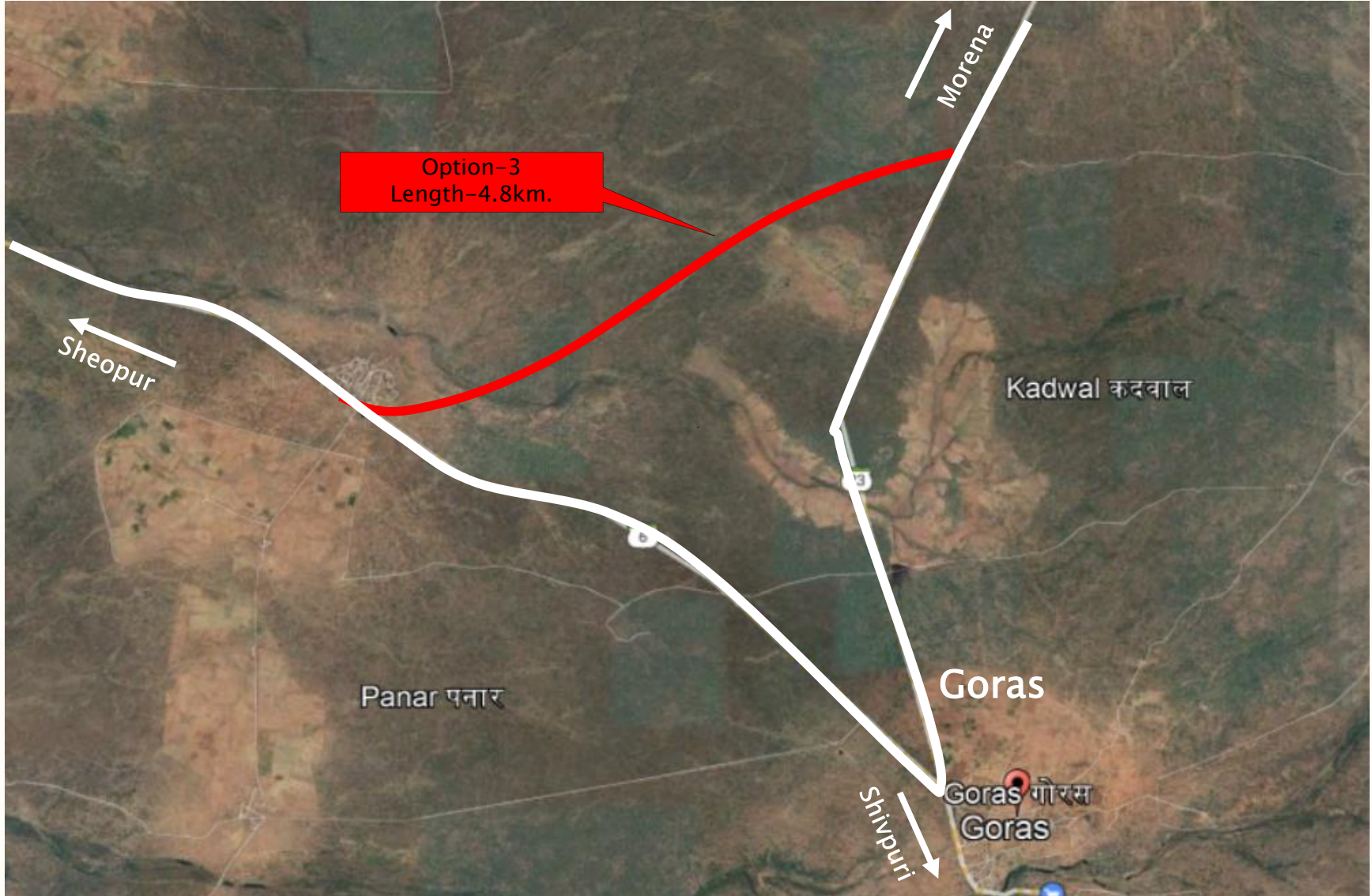
# GORAS BYPASS DETAIL

## Alignment-III

This proposed alignment started at the Existing Km 49+600 of NH-552Ext. will passing through left side of existing NH-552Ext. and ends at the Existing Km 61+300. The total length of existing stretch is 12.0 kms, which is to be covered by proposed bypass alignment-3 of length 4.8 Kms. This alignment crosses the one river and maximum part of alignment passing through Forest .

## GORAS BYPASS OPTION-III

Alignment -III is showing on Google map



# Goras Bypass Alignments Comparison

S.No	Type	Alignment-1	Alignment-2	Alignment-3
1	<b>Length (in M)</b>	2.80	5.20	4.80
2	<b>Terrain Type</b>	Plain	Plain & Rolling	Plain & Rolling
3	<b>Structures</b>			
	Culverts	20	20	18
	Minor Bridges	1	1	1
	Major Bridges	Nil	Nil	
4	<b>Crossings (in Nos)</b>			
	Railway line	Nil	Nil	Nil
	HT Tower Lines	Nil	Nil	Nil
	HT Lines (11 KV & 33 KV)			
	LT lines			
5	<b>Land (length in m)</b>			
	Forest Land	2300	4900	4500
	Non Forest Land	500	300	300
6	<b>R&amp;R Issues</b>	-	-	



## Comparison of alignment options

Details	Option – 1	Option – 2	Option – 3
Length	2.80 Km	5.20 Km	4.80 Km
Starts at Km	51+750	49+500	49+600
Ends at Km	60+550	61+650	61+330
ROW Required	20m	20m	20m
Terrain (approx.)	Plain & Rolling	Plain & Rolling	Plain & Rolling
Land Acquisition involved	5.6 Ha.	10.40 Ha.	9.60 Ha.
Land Type	Forest, Agriculture & Barren	Forest Agriculture & Barren	Forest Agriculture & Barren
Road Intersection	-	-	-
Approx. Bypass Cost	Construction Cost 12.60 Crores ( 4.50 Crores / km) L.A. Cost: 0.5450 Crores R & R Cost (Nil)	Construction Cost 23.40 Crores ( 4.50 Crores / km) L.A. Cost: 1.00 Crores R & R Cost(Nil)	Construction Cost 21.60 Crores ( 4.50 Crores / km) L.A. Cost: .90Crores R & R Cost(Nil)

# **Recommended Bypass Alignment-1 For Goras Bypass**

- The option-1 of proposed alignment is recommended after comparison of engineering, environment Impact, social impact, land acquisition, R&R cost and construction cost etc. among all alignments option .
- Alignment-1 is passing from maximum barren & govt. land ,require minimum land therefore construction will easy compare to other 2 and 3 options.

Its economical viability is comparatively more , So **Alignment Option-1 is recommended.**

**Thank You**  
**MPPWD (NH) Gwalior**