



भारत INDIA
REFER TO THIS MAP AS 1:50,000
SHEET 78 A/8 SECOND EDITION

निर्यात के लिए नहीं NOT FOR EXPORT

RESTRICTED

सिक्किम, पश्चिमी बंगाल SIKKIM, WEST BENGAL

SECOND EDITION

Magnetic Variation from True North about 4° West in 1990.
(Decreasing by about 2' annually).

No. 78 A/8

EAST, SOUTH AND WEST DISTRICTS.
DARJILING DISTRICT.

Surveyed 1965-66.
(Also see foot-note).



Index to Sheets

78/5	78/6	78/7	78/8	78/9	78/10	78/11	78/12
78/13	78/14	78/15	78/16	78/17	78/18	78/19	78/20

Index to Sheets

78/5	78/6	78/7	78/8	78/9	78/10	78/11	78/12
78/13	78/14	78/15	78/16	78/17	78/18	78/19	78/20

भारत के सर्वेक्षण विभाग द्वारा, प्रकाशित किया गया, सर्वेक्षण विभाग, भारत सरकार, भारत।
Published under the direction of Dr. Pritivish Nay, Surveyor General of India,
Survey of India, Hishibarkala Estate, Post Box No. 37, Dehra-Dun 248001 (Uttaranchal), Department of Science & Technology, Government of India.

1:50,000

500 m to 1 cm

2 cm to 1 km

HEIGHTS & CONTOURS IN METRES

CONTOUR INTERVAL 20 METRES

Water features are shown in blue where they generally contain water.
Cultivated areas are coloured yellow.
The exterior boundaries of areas of Reserved or Protected Forests are shown by green ribbons.

Contours are approximate.
A contour height, dry, represents the approximate height, in metres, between the top and bottom of a steep slope.
Wooded areas are coloured green. Scattered trees and other vegetation are in green, but prominent surveyed trees are in black.

The state boundary between Sikkim and West Bengal States in squares A/2, B/2, C/2 and C/3 has been surveyed as pointed out by the local officials on the ground, but has not been verified by the Government concerned.
The triangulated heights and contours of this sheet, except in square A/3, B/3 and C/3 have not been adjusted to the heights of spirit-levelled bench-marks and may not be strictly in accordance with them.

The kilometre stone numbers along roads and the railway are shown in short type, e.g. '5' whereas inflexion numbers are shown in upright type, e.g. '50'.
The sheet has been revised as a result of verification survey in respect of major details carried out during 1981-82.
Forest boundary of GOK FOREST in square A/2 has not been shown for want of reliable information.
This sheet has been compiled from 1:25,000 survey.

Administrative Index



1 WEST DISTRICT, 5.

2 EAST DISTRICT, 5.

Legend

Town or Village: inhabited, deerskin fort	...
Hut: permanent, temporary, tower, antiquities	...
Temple, Chhatra, Church, Mosque, Jogh, Tomb, Graves	...
Lighthouse, Lightship, Buoy, Lighted, unlighted, Anchorage	...
Mine, Vine on trail, Grass, Scrub	...
Palms, palm grove, Plantain, Conifer, Bamboo, Other trees	...
Boundary: international	...
State demarcated, undemarcated	...
district boundary, sub-district or block forest	...
Boundary pillars: surveyed, unvisited, village triangulation	...
Height: triangulated, station, points, approximate	...
Bench-mark: geodetic, tertiary, canal	...
Post office, Telegraph office, Combined office, Police station, PD, PD, PD	...
Bungalow, dhal or traveller's inn, Impersonal, Barn-house, DM, AB (Contd.)	...
Church, house, Camping ground, Forest: reserved, protected, CH, CG, R, E, P, F	...
Spaced names: administrative, locality or tribal	...

GOVERNMENT OF INDIA COPYRIGHT, 2002.
Price: Twenty-five Rupees.

RESTRICTED

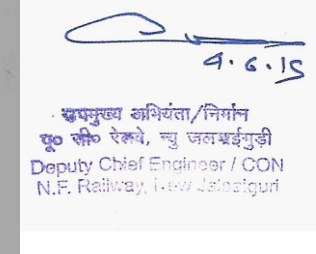
This map is NOT to be published, copied or reproduced in part or in whole either by photography or by any other means should be kept in safe custody and handled by authorized persons only.

REFER TO THIS MAP AS 1:50,000
SHEET 78 A/8 SECOND EDITION

INDIA भारत

REFERENCES

- Vet Hosp Veterinary Hospital.
- Dip Dispensary.
- D.M. Darjiling Himalayan.
- NH 31A National Highway No. 31A.
- T.G. Tea garden.
- N.F.R. Northeast Frontier Railway.
- P.W.D. Public Works Department.

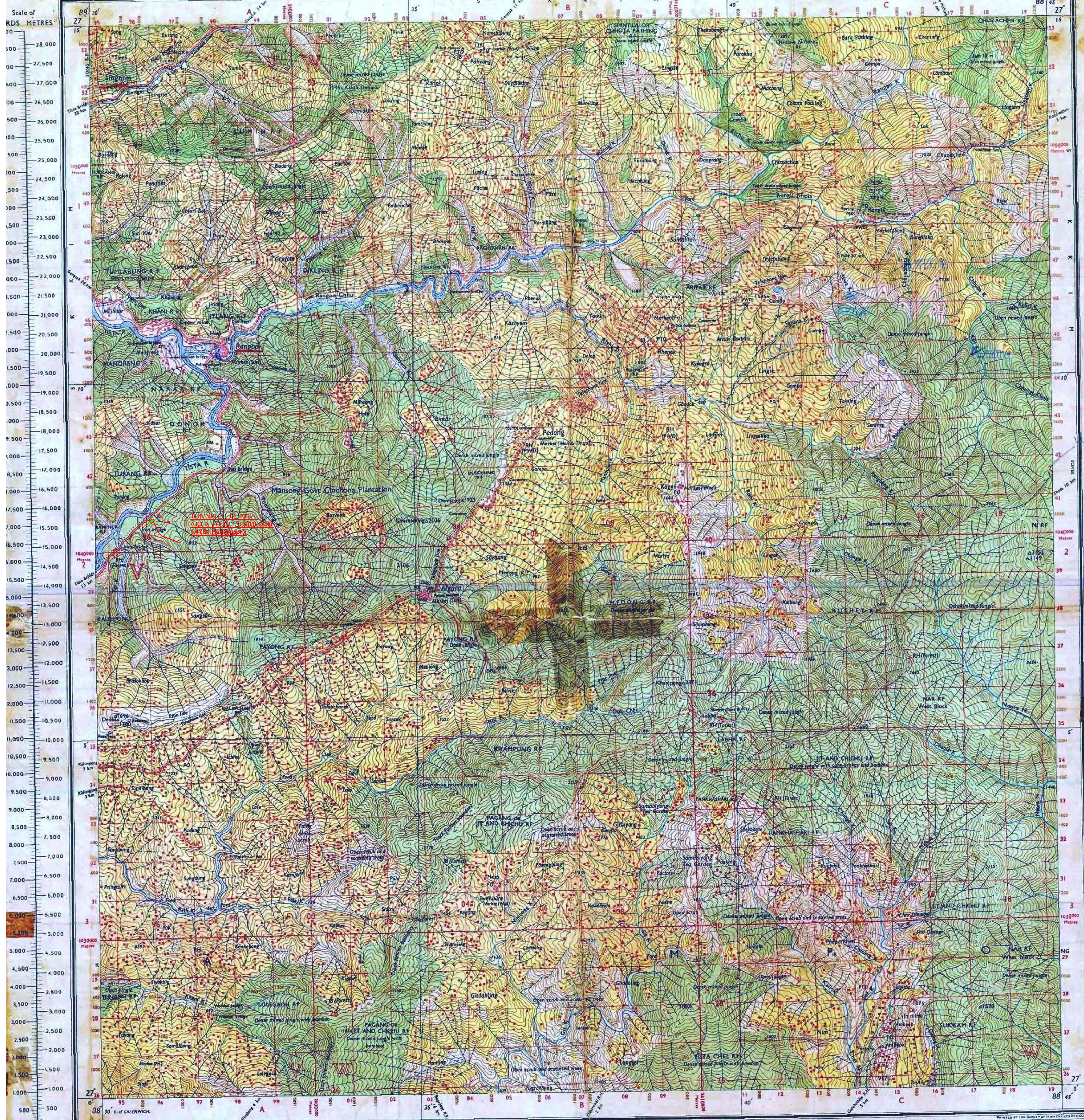


Surveyed 1962-63.

BHUTAN
SIKKIM, WEST BENGAL

FIRST EDITION

Mean Grid North, in this sheet, is $0^{\circ} 36'$ West of True North.
Magnetic Variation from True North about $\frac{1}{2}^{\circ}$ West in 1960.
(Increasing by about $2'$ annually).



© GOVERNMENT OF INDIA COPYRIGHT, 1963.
Price: Two Rupees.

Grid II 3 (Metres)

Grid references are given in hundreds of metres East and North of the south-west corners of the lettered squares: thus the grid reference of 4 KHATUNG is W 03137

(The odd 1 refers to body of map)

4.6.15
Deputy Chief Engineer / CON
N.E. Railway, New Jalpaiguri

RESTRICTED

RESTRICTED

RESTRICTED

This map is NOT to be published, copied or reproduced in part or in whole either by photography or by any other means, should be kept in safe custody and handled by authorized persons only.