

RESTRICTED

SECOND EDITION

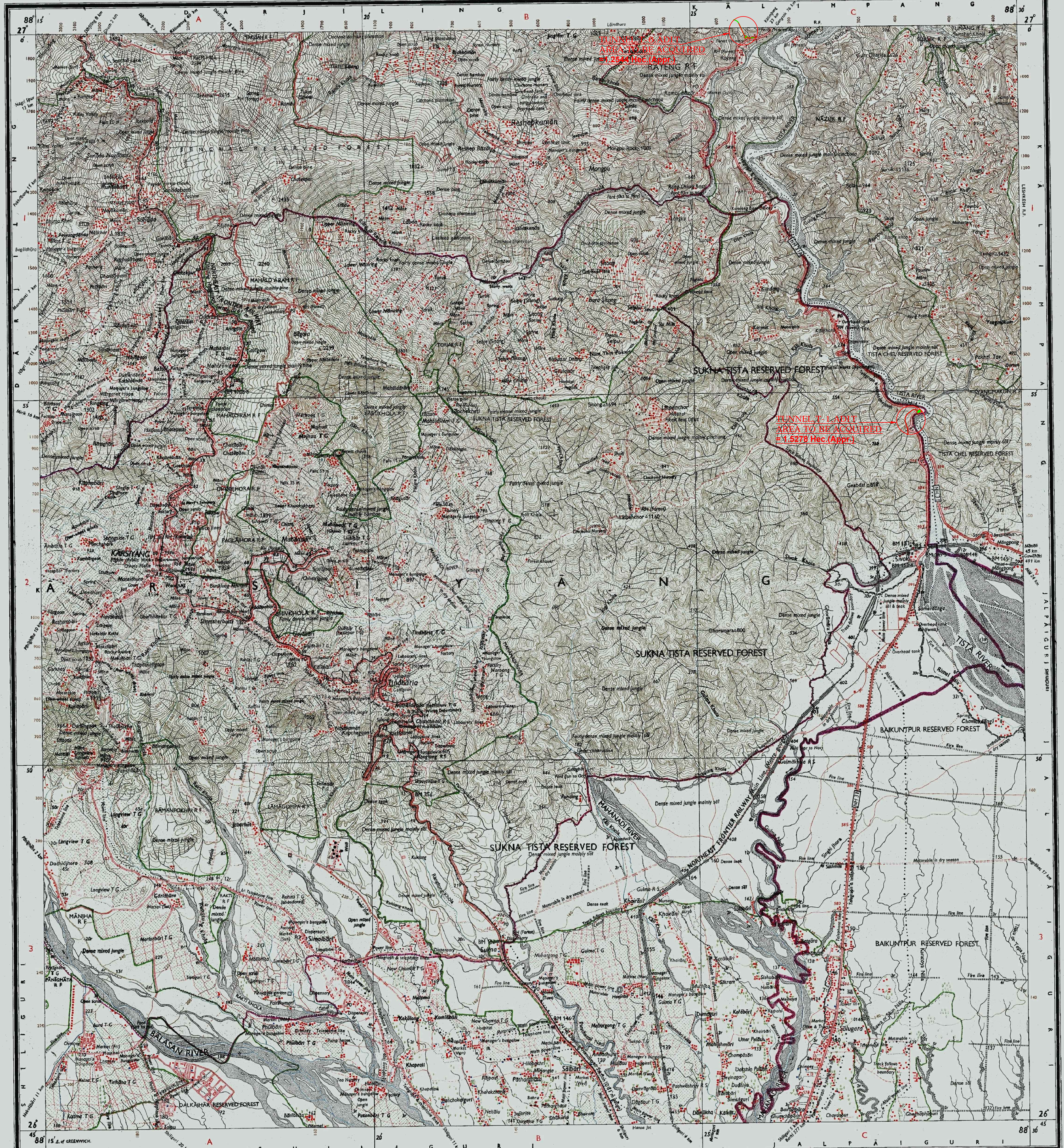
पश्चिमी बंगाल WEST BENGAL

DARJILING AND
JALPAIGURI DISTRICTS.

Surveyed, 1965-66, 1969-71.
(also see complete notes)

Magnetic Variation from True North about 1° West in 1985.
(Annual change negligible)

No. 78 B/5



Reg. No. 5353-102 D/87 (D.O. 5.1.86.000)-11.04.91.
Roads: metalled, according to importance; distance stone
unmetalled do. do. do. bridge
Cart-track, pack-track and skis. Foot path with bridge
Bridges: with pier without. Causeway. Ford or ferry
Stream, with track in bed unfilled. Canal
Dams: masonry or rock-filled earthen. Weir
River banks: shelving: steep 3 to 6 metres: over 6 metres
dry with water channel: with island & rocks: tidal river
Submerged rocks. Shoal. Swamp. Road
Wells: lined: unlined: tube-well: spring: tank: perennial: dry
Embankment: road or rail: tank: broken ground
Railways: broad gauge: double: single with station under construction
other gauges: do. do. with distance stone
Mineral line or tramway: telegraph line: cutting with tunnel
Contours with subfeatures: rocky slopes: cliffs
Sand features: dunes: sandhills and dunes: submerged dunes

In Edition 1972: 2nd 1987.
(Previous Edition on 1-10-1965, Preliminary 1923:
In 1931: 2nd (Emergency) 1965.)

Index to Sheets

78 A/1	78 A/2	78 A/3
78 B/1	78 B/2	78 B/3
78 C/1	78 C/2	78 C/3

500 m to 1 cm
1:50,000
2 cm to 1 km
7 kilometres

HEIGHTS & CONTOURS IN METRES
CONTOUR INTERVAL 20 METRES

Water features are shown in blue where they generally contain water.
Cultivated areas are coloured yellow.
The exterior boundaries of areas of Reserved or Protected Forests are shown by green ribbons.

Contours are approximate.
A relative height, h_r , represents the approximate height, in metres, between the top and bottom of a steep slope.
Wooded areas are coloured green. Scattered trees and other vegetation are in black, but prominent surveyed trees are in black.

Administrative Index



Towns or Villages: inhabited: deserted: Fort: ...
Huts: permanent: temporary: Tower: Antiquities: ...
Temple: Chhatri: Church: Mosque: Jagan: Tomb: Grave: ...
Lighthouse: Lightship: Boats: Light: unlighted: Anchorage: ...
Mine: Vine: oil: salt: Grass: Scrub: ...
Palms: palm: other: Plantain: Conifer: Bamboo: Other trees: ...
Boundary, international
state: demarcated: undemarcated
district: sub-division: taluk: or: tahsil: forest: ...
Boundary: pillars: surveyed: unlocated: village: junction: ...
Height: triangulated: station: point: approximate: ...
Bench-mark: Geodetic: tertiary: canal: ...
Post office: Telegraph office: Combined office: Police station: ...
Bangladeshi: dak: or: train: inspection: Rest house: ...
Circuit house: Camping ground: Forest: reserved: protected: CH: CG: R.F. P: ...
Spaced names: administrative: locality or tribal: ...
NAGA

REFER TO THIS MAP AS - 1:50,000
SHEET 78 B/5 SECOND EDITION
INDIA भारत

REFERENCES
NH 31 National Highway No. 31. T.G. Tea Garden.

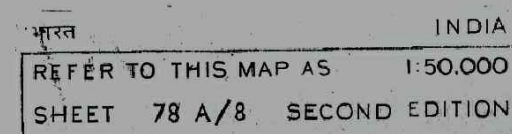
COMPILED INDEX

A. Compiled from 1:25,000 survey, 1969-71.
B. Compiled from 1:25,000 survey, 1965-66 with corrections as a result of verification surveys in respect of major details carried out during 1969-70.

Dr. T. Ghosh
General Manager
RICO INTERNATIONAL LTD.
New Delhi
Sukh Rangoon New Delhi
Dr. T. Ghosh
Deputy Chief Engineer / COM
N.E. Railway, New Delhi

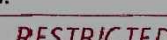
GOVERNMENT OF INDIA COPYRIGHT, 1987.

RESTRICTED
This map is NOT to be published, copied or reproduced in part or in whole, either by photography or by any other means, should be kept in safe custody and handled by authorized persons only.



SECOND EDITION

Magnetic Variation from True North about $\frac{1}{2}^{\circ}$ West in 1990.
(Decreasing by about 2' annually).

No. 78 $\frac{A}{8}$ 

This map is NOT to be published, copied or reproduced in part or in whole either by photography or by any other means; should be kept in safe custody and handled by authorized persons only.

INDIA भारत

Vet Hosp	Veterinary Hospital.	NH 31A	National Highway No. 31A.
Disp	Dispensary.	T G	Tea garden.
D M	Darjiling Himalayan.	N F R	Northeast Frontier Railway.
P W D Public Works Department.			

