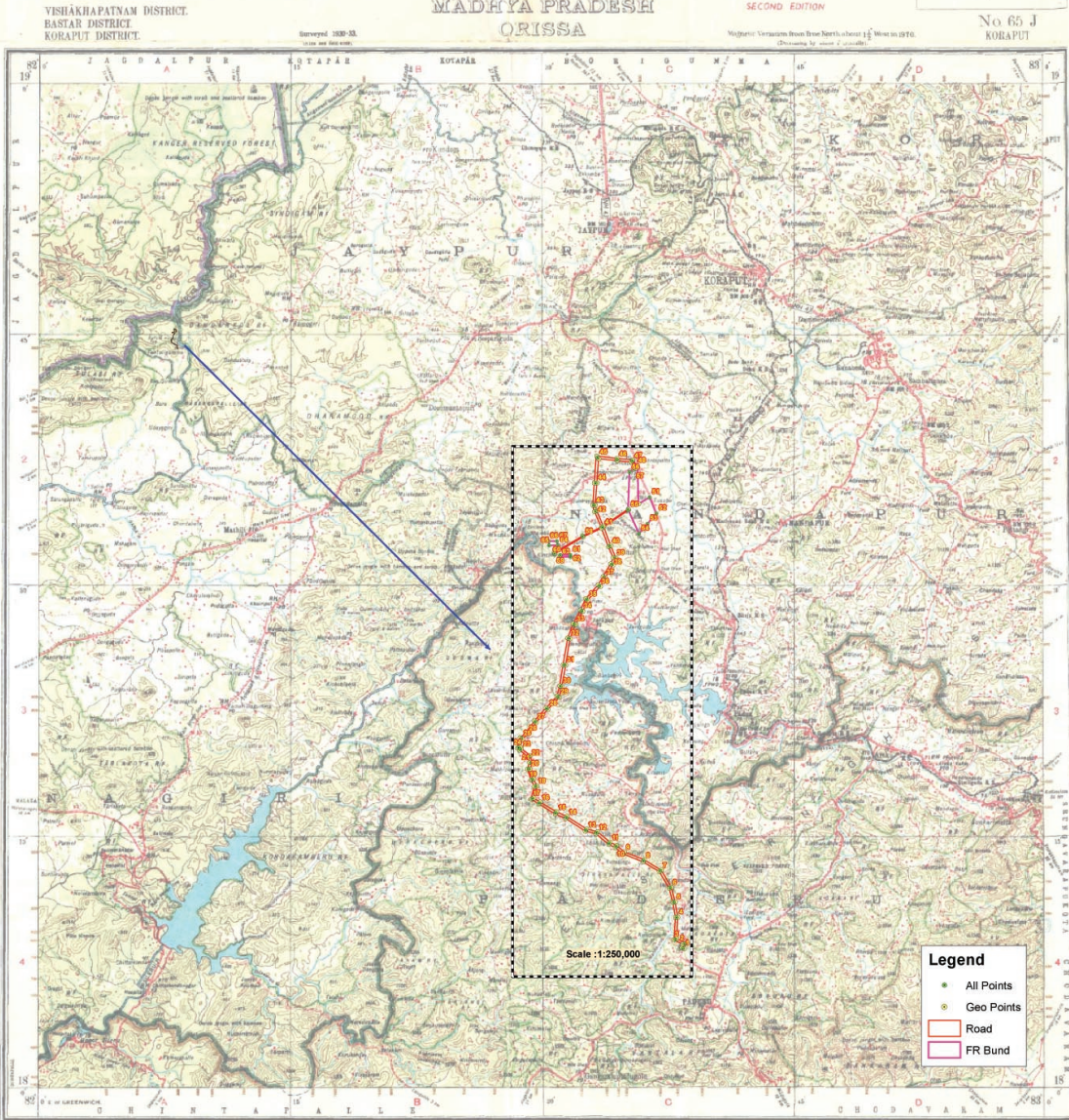


Location Map of Proposed Diversion of Forest Land for 25 MW Shaheed Lakhan Nayak SHEP, Koraput District, Odisha.

ANDHRA PRADESH  
MADHYA PRADESH  
ORISSA

REFER TO THIS MAP AS - 1:250,000  
SHEET 65 J SECOND EDITION

No 65 J  
KORAPUT



- Legend**
- All Points
  - Geo Points
  - Road
  - FR Bund

Scale: 1:250,000

HEIGHTS AND CONTOURS IN METRES  
CONTOUR INTERVAL: 100 METRES

For Meenakshi Odisha Power Private Limited  
(B.S.K.NIVAS)  
DIRECTOR

GOVERNMENT OF INDIA COPYRIGHT - 1974  
SURVEY OF INDIA No. 29/4