

KARNATAKA NEERAVARI NIGAM LIMITED

(A Government of Karnataka Undertaking)

**Office Of the Executive Engineer, Karnataka Neeravari Nigama Limited, No.2, Varahi
Reservoir Project Division, Siddapura, Udupi Dist.**

JUSTIFICATION LETTER

The Map showing alternative alignment(avoiding forest land) and as well as proposed alignment is uploaded as per the instructions. The reasons for discarding the alternative alignments are as below:-

1. The Position of Delivery Chamber has been decided in the higher Contour keeping in view to Irrigate the command area of 2723 ha in higher elevation.
2. Two alternative alignments are studied (show in red color and Orange color), the reasons for discarding the alternative alignment areas below:
 - a. The First Alternative alignment passing through the non-forest land will increase the length of canal and also canal runs in deep cut which intern increases the cost of the project and also increase in land acquisition width due to deep cut regions Technically, considering the past problems of land slides in deep cut reaches in canals in this loose lateritic soil terrain, deep cut reaches are found not feasible and hence, running canal alignment in such deep cut reaches are avoided.
 - b. The Contour Canal Shown in the second alternative alignment can not provide Irrigation Command of 2723ha proposed in the scheme, as this alignment runs at lower Contour.

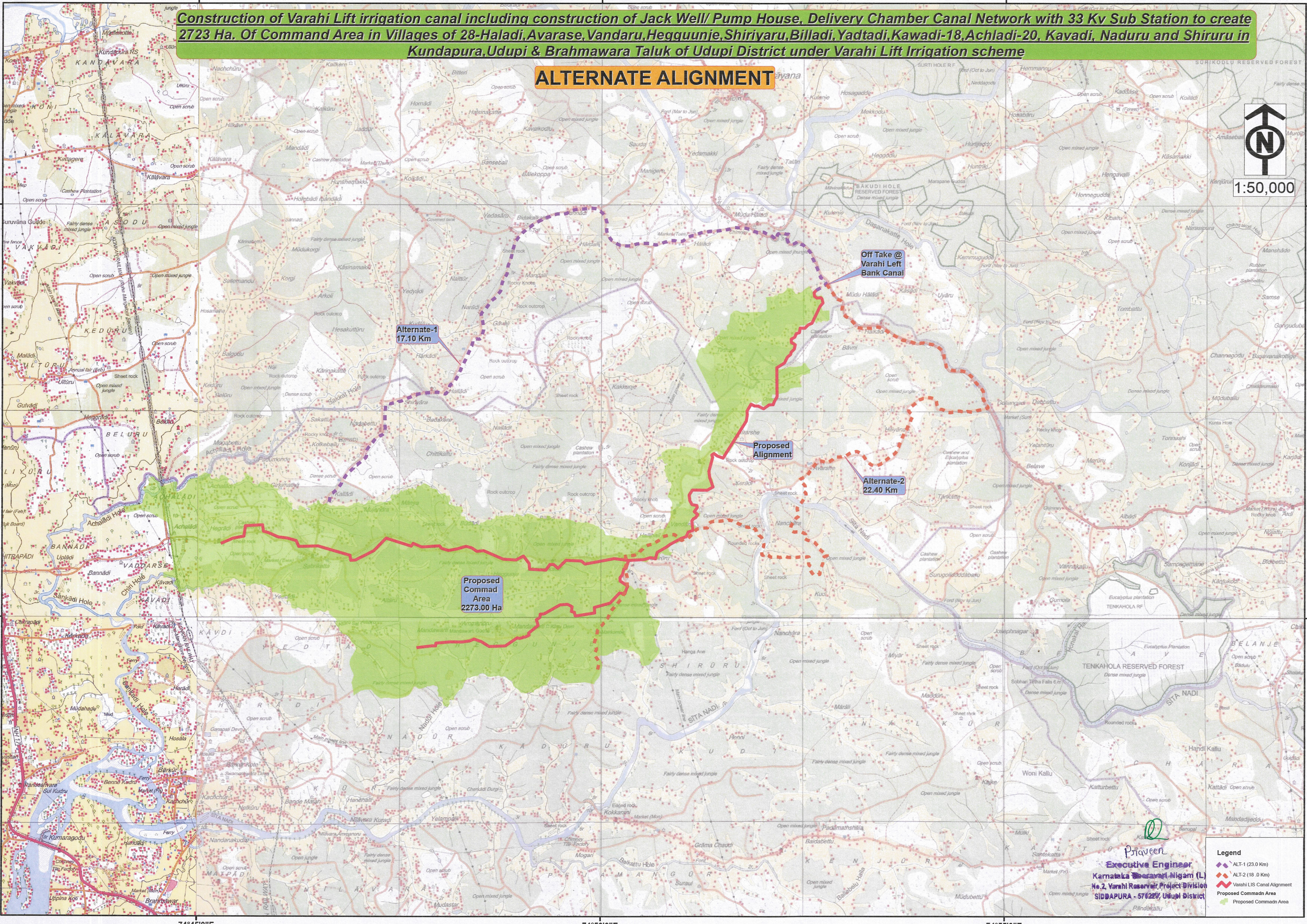
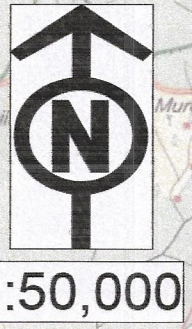
Keeping in view the above factors,the alignment has been finalized in the certain forest area requiring about 16.242hactares.

Praveen

Executive Engineer
Karnataka Neeravari Nigam (L)
No.2, Varahi Reservoir Project Division
SIDDAPURA - 576229, Udupi District

Construction of Varahi Lift irrigation canal including construction of Jack Well/ Pump House, Delivery Chamber Canal Network with 33 Kv Sub Station to create 2723 Ha. Of Command Area in Villages of 28-Haladi,Avarase,Vandaru,Hegguunje,Shiriyaru,Billadi,Yadtadi,Kawadi-18,Achladi-20, Kavadi, Naduru and Shiruru in Kundapura,Udupi & Brahmawara Taluk of Udupi District under Varahi Lift Irrigation scheme

ALTERNATE ALIGNMENT



- Legend**
- ALT-1 (23.0 Km)
 - ALT-2 (18.0 Km)
 - Varahi LIS Canal Alignment
 - Proposed Command Area
 - Proposed Command Area

Praveen
Executive Engineer
Karnataka Water Resources Development Corporation (L)
No.2, Varahi Reservoir, Project Division
SIDDAPURA - 576225, Udupi District