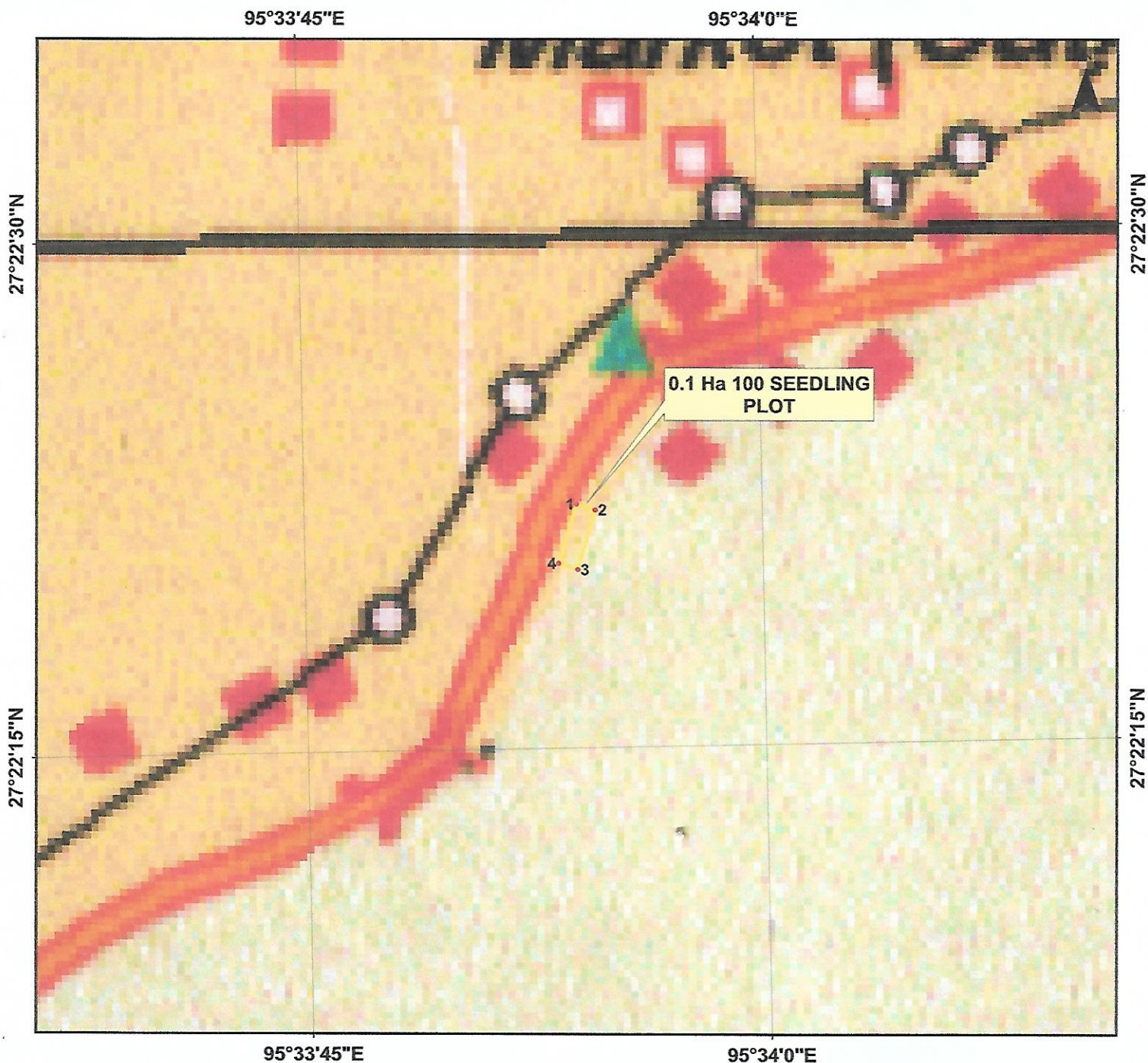


TOPOSHEET MAP SHOWING THE PROPOSED 0.1 HECTARE 100 SEEDLING PLOT AT UPPER DIHING RF (WEST BLOCK) AGAINST 0.09563 Ha DIVERSION AREA FOR DEVELOPMENT AND IMPROVEMENT OF JAGUN NAMCHIK MIAO ROAD (ASSAM PORTION) INCLUDING BRIDGE No. 9/1 OVER NAMCHIK RIVER IN NAMPHAI RF UNDER DIGBOI DIVISION

Scale - 1: 2000



GPS COORDINATE READINGS OF SEEDLING PLOT						
GPS POINTS	LATITUDE	LONGITUDE	DIVERSION AREA	NAME OF SEEDLING PLOT LOCATION	AREA OF SEEDLING PLOT	NAME OF FOREST DIVISION
1	27.37280925	95.56497244	0.09563 Ha IN	UPPER	0.1 Ha	DIGBOI DIVISION
2	27.37275928	95.56514039	NAMP HAI RF FOR	DIHING RF		
3	27.37227762	95.56497291	BRIDGE OVER	(WEST		
4	27.37233043	95.56479785	NAMCHIK RIVER	BLOCK)		

Projection - UTM Zone 46 N
Datum - WGS 84
Toposheet - G46F11
Courtesy - SOI

Legend
 Proposed Seedling Plot Coordinates
 Proposed Seedling Plot

Divisional Forest Officer
Digboi Division, Digboi
Tinsukia, Assam