


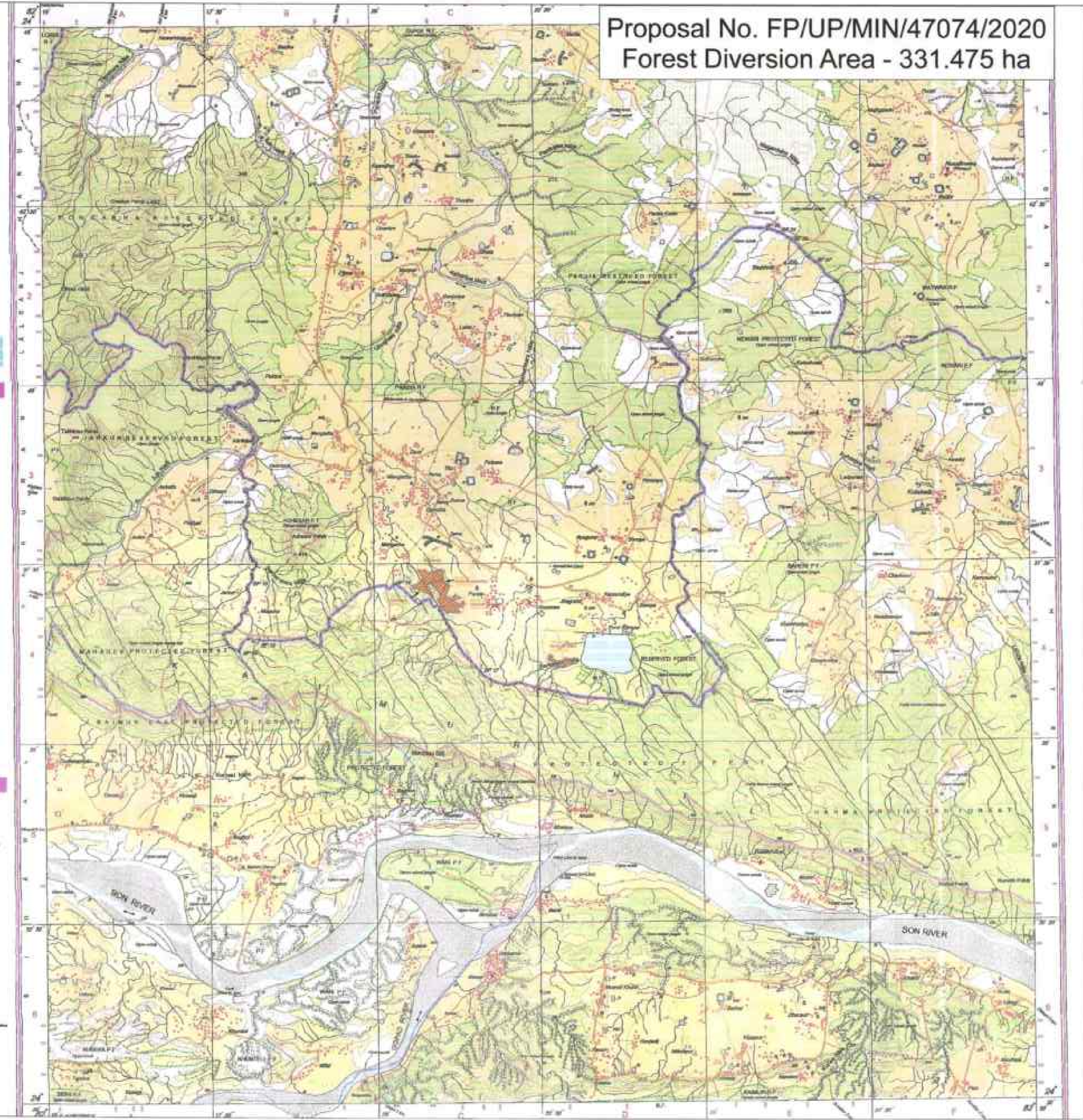
SOI Map Showing CA Land (NFL) of Badauha, Parasia Mudhpeli & Paudi Rampur in Mirzapur District




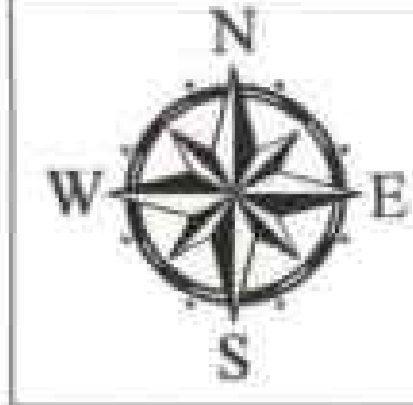
No. G44W6
 Scale 1:50,000

G44W1	G44W5	G44W9
G44W2	G44W6	G44W10
G44W3	G44W7	G44W11

Proposal No. FP/UP/MIN/47074/2020
Forest Diversion Area - 331.475 ha



Index
 ● CA Land Point
 CA Land Area (NFL)


 Scale = 1:40000


 0 1,000 2,000 4,000 6,000 8,000 Meters

CA LAND AREA DETAILS IN KAIMOOR DIVISION

PARASIA MUDHPELI	PATCH 16	8.0 Ha
PARASIA MUDHPELI	PATCH 16A	22.6 Ha
PAUDI RAMPUR	PATCH 20	6.717 Ha
BADAUHA	PATCH 35	8.0 Ha
BADAUHA	PATCH 1	15.224 Ha
TOTAL AREA		60.541 Ha


DGPS COORDINATE OF CA LAND POINTS			DGPS COORDINATE OF CA LAND POINTS				
Sl. No.	Point ID	Latitude	Longitude	Sl. No.	Point ID	Latitude	Longitude
1	C152	24° 37' 23.451" N	82° 20' 40.509" E	99	C210	24° 37' 0.232" N	82° 20' 59.341" E
2	C153	24° 37' 24.350" N	82° 20' 41.864" E	100	C211	24° 37' 0.508" N	82° 21' 0.508" E
3	C154	24° 37' 24.153" N	82° 20' 41.114" E	101	C212	24° 37' 1.968" N	82° 20' 54.601" E
4	C155	24° 37' 21.715" N	82° 20' 49.063" E	102	C213	24° 37' 4.332" N	82° 20' 52.877" E
5	C156	24° 37' 23.252" N	82° 20' 54.877" E	103	C214	24° 37' 6.192" N	82° 20' 52.312" E
6	C157	24° 37' 22.991" N	82° 20' 57.253" E	104	C215	24° 37' 9.018" N	82° 20' 50.139" E
7	C158	24° 37' 23.985" N	82° 20' 58.582" E	105	C216	24° 37' 11.017" N	82° 20' 48.047" E
8	C159	24° 37' 24.393" N	82° 20' 59.199" E	106	C217	24° 37' 16.408" N	82° 20' 44.408" E
9	C160	24° 37' 24.551" N	82° 20' 59.599" E	107	C218	24° 37' 11.965" N	82° 20' 36.613" E
10	C161	24° 37' 24.862" N	82° 21' 0.048" E	108	C219	24° 37' 10.601" N	82° 20' 37.461" E
11	C162	24° 37' 24.739" N	82° 21' 0.789" E	109	C220	24° 37' 9.507" N	82° 20' 37.648" E
12	C163	24° 37' 24.739" N	82° 21' 1.548" E	110	C221	24° 37' 9.047" N	82° 20' 38.978" E
13	C164	24° 37' 24.538" N	82° 21' 2.105" E	111	C222	24° 37' 5.311" N	82° 20' 48.134" E
14	C165	24° 37' 24.242" N	82° 21' 2.508" E	112	C223	24° 36' 13.377" N	82° 22' 40.399" E
15	C166	24° 37' 23.835" N	82° 21' 2.700" E	113	C224	24° 36' 12.592" N	82° 22' 42.378" E
16	C167	24° 37' 20.875" N	82° 21' 3.008" E	114	C225	24° 36' 11.449" N	82° 22' 43.269" E
17	C168	24° 37' 18.153" N	82° 21' 3.234" E	115	C226	24° 36' 9.306" N	82° 22' 43.299" E
18	C169	24° 37' 16.170" N	82° 21' 3.409" E	116	C227	24° 36' 7.461" N	82° 22' 49.471" E
19	C170	24° 37' 14.415" N	82° 20' 53.460" E	117	C228	24° 36' 7.188" N	82° 22' 50.817" E
20	C171	24° 37' 13.594" N	82° 20' 51.778" E	118	C229	24° 36' 7.112" N	82° 22' 52.283" E
21	C172	24° 37' 12.185" N	82° 20' 48.607" E	119	C230	24° 36' 7.334" N	82° 22' 53.468" E
22	C173	24° 37' 10.043" N	82° 20' 55.119" E	120	C231	24° 36' 6.895" N	82° 22' 53.892" E
23	C174	24° 37' 8.398" N	82° 20' 56.941" E	121	C232	24° 36' 6.946" N	82° 22' 53.793" E
24	C175	24° 37' 3.636" N	82° 21' 0.474" E	122	C233	24° 36' 8.278" N	82° 22' 53.828" E
25	C176	24° 37' 11.990" N	82° 21' 0.645" E	123	C234	24° 36' 9.643" N	82° 22' 54.366" E
26	C177	24° 37' 12.385" N	82° 21' 0.301" E	124	C235	24° 36' 9.441" N	82° 22' 54.601" E
27	C178	24° 37' 10.778" N	82° 21' 9.406" E	125	C236	24° 36' 9.902" N	82° 22' 56.153" E
28	C179	24° 37' 2.716" N	82° 21' 5.455" E	126	C237	24° 36' 10.136" N	82° 22' 56.348" E
29	C180	24° 37' 0.060" N	82° 21' 10.709" E	127	C238	24° 36' 9.500" N	82° 22' 58.598" E
30	C181	24° 37' 4.137" N	82° 21' 13.852" E	128	C239	24° 36' 7.848" N	82° 22' 0.850" E
31	C182	24° 37' 1.189" N	82° 21' 20.367" E	129	C240	24° 36' 6.854" N	82° 22' 2.462" E
32	C183	24° 36' 58.786" N	82° 21' 15.249" E	130	C241	24° 36' 5.750" N	82° 22' 1.440" E
33	C184	24° 36' 59.853" N	82° 21' 12.448" E	131	C242	24° 36' 5.393" N	82° 22' 58.970" E
34	C185	24° 36' 59.111" N	82° 21' 11.625" E	132	C243	24° 36' 5.300" N	82° 22' 58.314" E
35	C186	24° 36' 58.418" N	82° 21' 12.714" E	133	C244	24° 36' 4.818" N	82° 22' 57.479" E
36	C187	24° 36' 55.724" N	82° 21' 18.351" E	134	C245	24° 36' 3.940" N	82° 22' 56.648" E
37	C188	24° 36' 58.400" N	82° 21' 19.851" E	135	C246	24° 36' 2.984" N	82° 22' 52.888" E
38	C189	24° 36' 58.188" N	82° 21' 21.993" E	136	C247	24° 36' 2.944" N	82° 22' 51.949" E
39	C190	24° 36' 56.592" N	82° 21' 22.021" E	137	C248	24° 36' 3.002" N	82° 22' 48.774" E
40	C191	24° 36' 56.058" N	82° 21' 22.739" E	138	C249	24° 36' 3.489" N	82° 22' 46.720" E
41	C192	24° 36' 53.102" N	82° 21' 21.419" E	139	C250	24° 36' 3.888" N	82° 22' 45.681" E
42	C193	24° 36' 53.217" N	82° 21' 17.583" E	140	C251	24° 36' 3.767" N	82° 22' 45.718" E
43	C194	24° 36' 54.531" N	82° 21' 18.300" E	141	C252	24° 36' 4.221" N	82° 22' 45.713" E
44	C195	24° 36' 52.422" N	82° 21' 14.002" E	142	C253	24° 36' 4.451" N	82° 22' 45.734" E
45	C196	24° 36' 40.743" N	82° 21' 18.148" E	143	C254	24° 36' 3.500" N	82° 22' 51.566" E
46	C197	24° 36' 40.528" N	82° 21' 18.593" E	144	C255	24° 36' 3.679" N	82° 22' 50.075" E
47	C198	24° 36' 48.213" N	82° 21' 17.299" E	145	C256	24° 36' 4.326" N	82° 22' 53.276" E
48	C199	24° 36' 48.737" N	82° 21' 15.189" E	146	C257	24° 36' 5.218" N	82° 22' 51.510" E
49	C200	24° 36' 49.398" N	82° 21' 11.263" E	147	C258	24° 36' 6.847" N	82° 22' 45.489" E
50	C201	24° 36' 49.644" N	82° 21' 8.700" E	148	C259	24° 36' 6.083" N	82° 22' 38.989" E
51	C202	24° 36' 48.112" N	82° 21' 7.392" E	149	C260	24° 36' 9.555" N	82° 22' 40.078" E
52	C203	24° 36' 48.819" N	82° 21' 6.424" E	150	C261	24° 36' 10.059" N	82° 22' 40.164" E
53	C204	24° 36' 50.557" N	82° 21' 4.847" E	151	C262	24° 36' 10.038" N	82° 22' 40.723" E
54	C205	24° 36' 50.808" N	82° 21' 4.518" E	152	C263	24° 36' 10.378" N	82° 22' 40.737" E
55	C206	24° 36' 50.538" N	82° 21' 4.303" E	153	C264	24° 36' 10.518" N	82° 22' 38.821" E
56	C207	24° 36' 50.867" N	82° 21' 3.724" E	154	C265	24° 36' 11.082" N	82° 22' 38.889" E
57	C208	24° 36' 53.336" N	82° 21' 1.918" E	155	C266	24° 36' 11.692" N	82° 22' 40.059" E
58	C209	24° 36' 57.443" N	82° 20' 59.438" E				

MAP SHOWING CA LAND (NFL) FOR FOREST CLEARANCE IN KAJRAHAT LIMESTONE MINING BLOCK

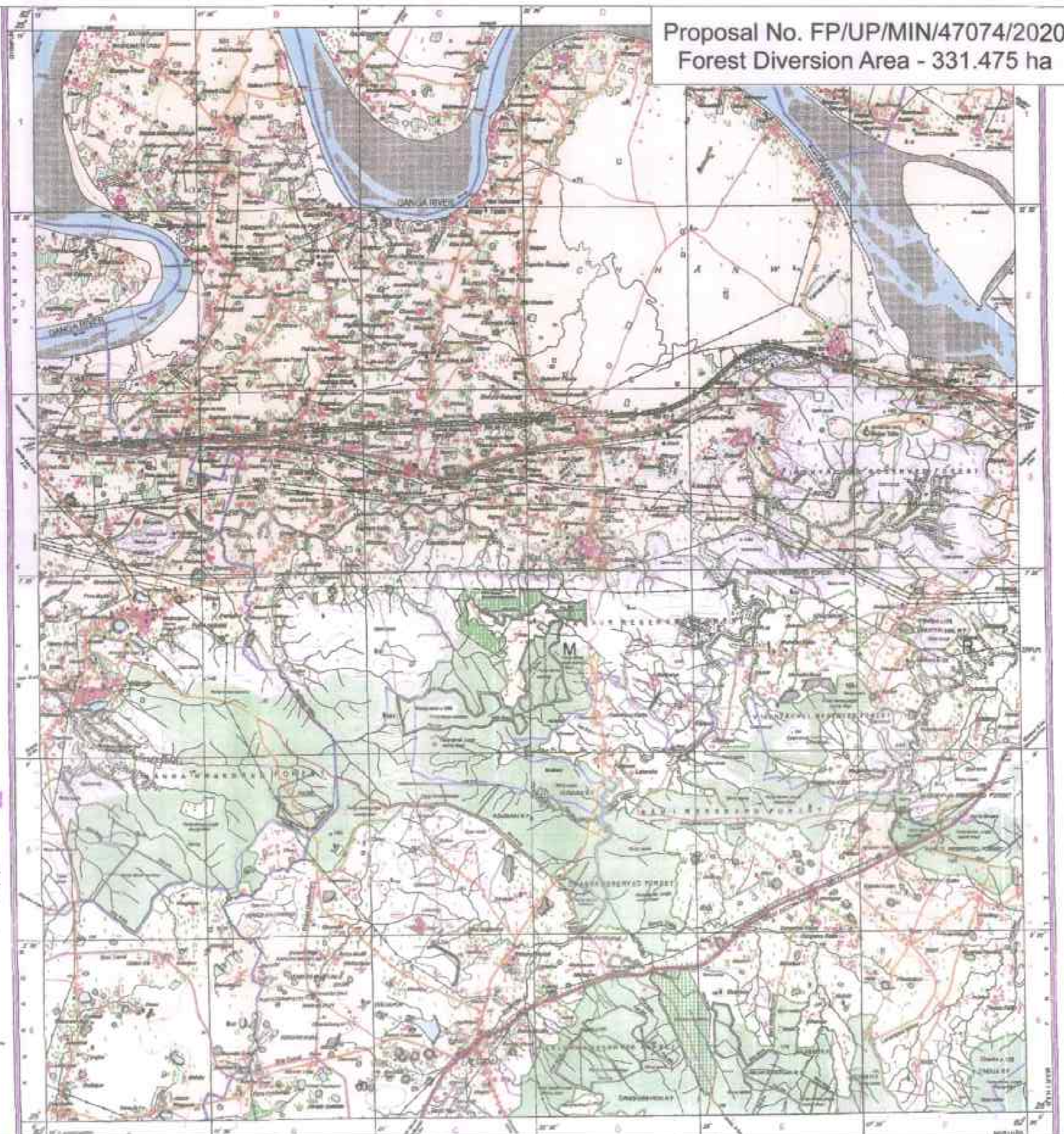
राज्य जल विभाग
 मिर्जापुर जल विभाग
 मिर्जापुर

राज्य जल विभाग
 मिर्जापुर जल विभाग
 मिर्जापुर

SOI Map Showing CA Land (NFL) of Manikpur in Mirzapur District



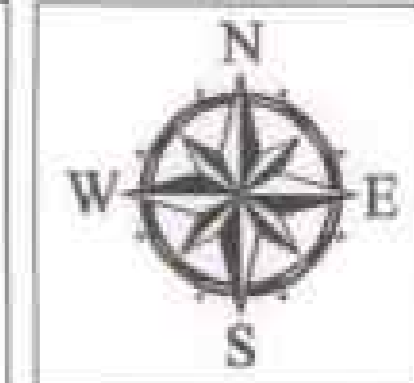
No. G44Q8
 Scale 1:50,000
 PLOTTER PRINT
 1:50,000



Proposal No. FP/UP/MIN/47074/2020
 Forest Diversion Area - 331.475 ha

Index

- CA Land Point
- CA Land Area (NFL)



Scale = 1:40000



MIRZAPUR CA LAND AREA DETAILS	
MANIKPUR PATCH 13	9.131 Ha
TOTAL AREA	9.131 Ha

DGPS COORDINATE OF CA LAND POINTS			
Sl. No.	Point ID	Latitude	Longitude
1	C96	25° 2' 36.078" N	82° 20' 33.666" E
2	C97	25° 2' 36.554" N	82° 20' 33.829" E
3	C98	25° 2' 36.840" N	82° 20' 37.284" E
4	C99	25° 2' 37.645" N	82° 20' 40.105" E
5	C100	25° 2' 36.801" N	82° 20' 41.748" E
6	C101	25° 2' 38.821" N	82° 20' 42.656" E
7	C102	25° 2' 41.375" N	82° 20' 40.104" E
8	C103	25° 2' 43.076" N	82° 20' 40.278" E
9	C104	25° 2' 42.975" N	82° 20' 41.106" E
10	C105	25° 2' 43.736" N	82° 20' 42.229" E
11	C106	25° 2' 45.103" N	82° 20' 42.616" E
12	C107	25° 2' 44.844" N	82° 20' 44.636" E
13	C108	25° 2' 38.549" N	82° 20' 49.028" E
14	C109	25° 2' 37.848" N	82° 20' 48.726" E
15	C110	25° 2' 33.760" N	82° 20' 46.218" E
16	C111	25° 2' 32.869" N	82° 20' 48.011" E
17	C112	25° 2' 29.358" N	82° 20' 46.366" E

प्रमाणित कीर्तिपत्र
 10/05/2020

प्रमाणित कीर्तिपत्र
 10/05/2020

प्रमाणित कीर्तिपत्र
 10/05/2020

**MAP SHOWING CA LAND (NFL) FOR
 FOREST CLEARANCE IN
 KAJRAHAT LIMESTONE
 MINING BLOCK**

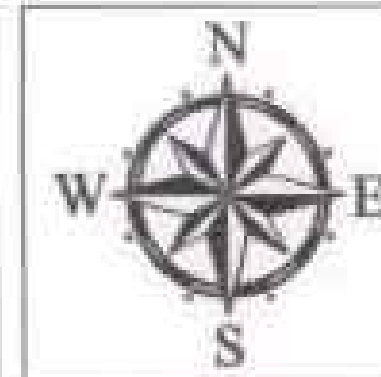


SOI Map Showing CA Land (NFL) of Raikara in Mirzapur District

Proposal No. FP/UP/MIN/47074/2020
Forest Diversion Area - 331.475 ha

Index

- CA Land Point
- CA Land Area (NFL)



Scale = 1:40000



MIRZAPUR CA LAND AREA DETAILS

RAIKARA PATCH 36	11.69 Ha
TOTAL AREA	11.69 Ha

DGPS COORDINATE OF CA LAND POINTS

Sl. No.	Point ID	Latitude	Longitude
1	C141	24° 49' 14.741" N	82° 39' 56.705" E
2	C142	24° 49' 22.394" N	82° 39' 41.629" E
3	C143	24° 49' 24.557" N	82° 39' 42.343" E
4	C144	24° 49' 26.143" N	82° 39' 43.558" E
5	C145	24° 49' 26.327" N	82° 39' 45.364" E
6	C146	24° 49' 26.351" N	82° 39' 46.970" E
7	C147	24° 49' 26.317" N	82° 39' 48.223" E
8	C148	24° 49' 26.167" N	82° 39' 53.379" E
9	C149	24° 49' 23.655" N	82° 39' 56.852" E
10	C150	24° 49' 22.500" N	82° 39' 58.874" E
11	C151	24° 49' 20.554" N	82° 40' 2.620" E

Handwritten signatures and stamps in blue ink.

**MAP SHOWING CA LAND (NFL) FOR
FOREST CLEARANCE IN
KAJRAHAT LIMESTONE
MINING BLOCK**



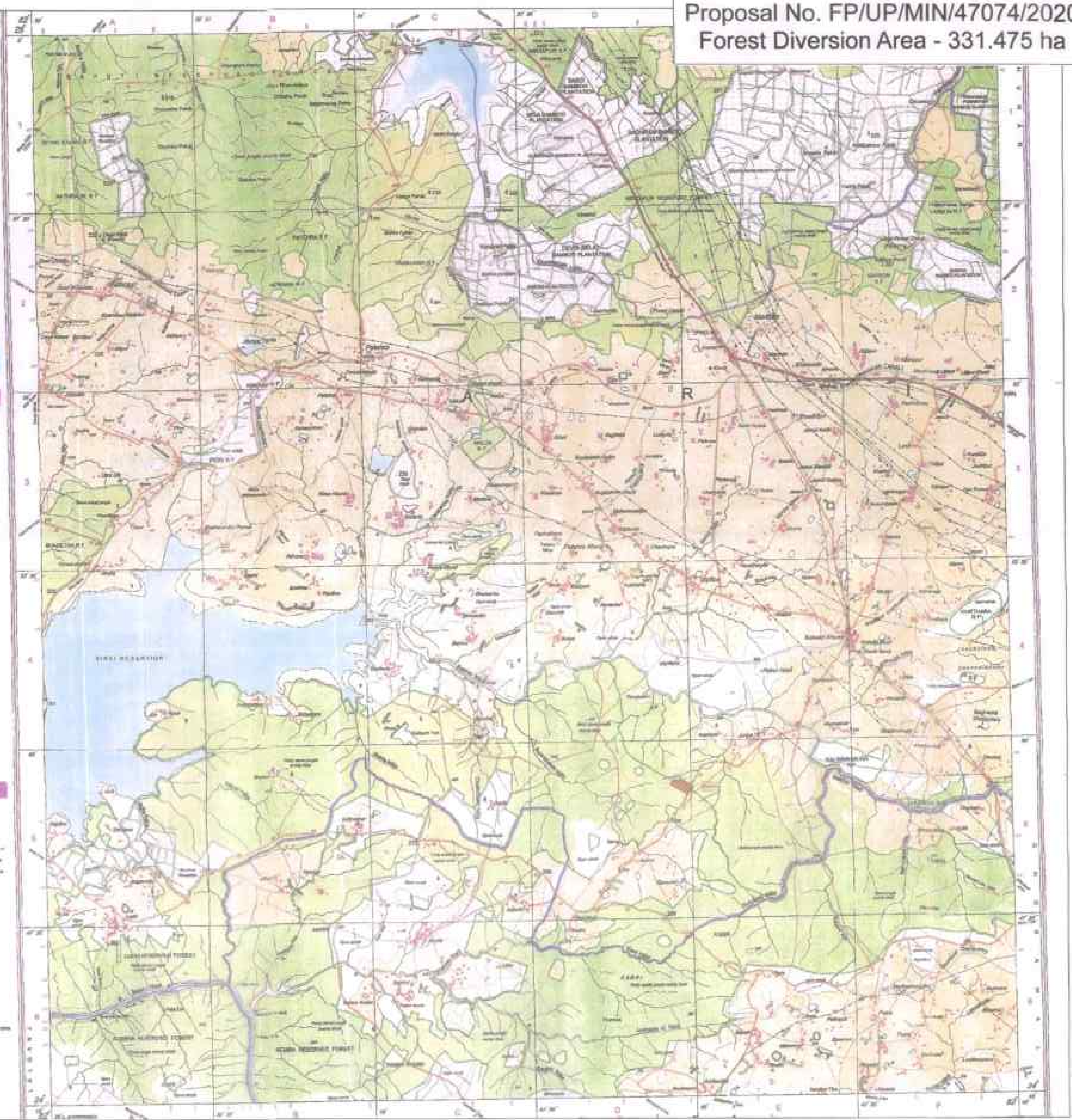
OPEN SERIES MAP
No. G44W9
Scale 1:50,000

CONVENTIONAL SYMBOLS

NOTE

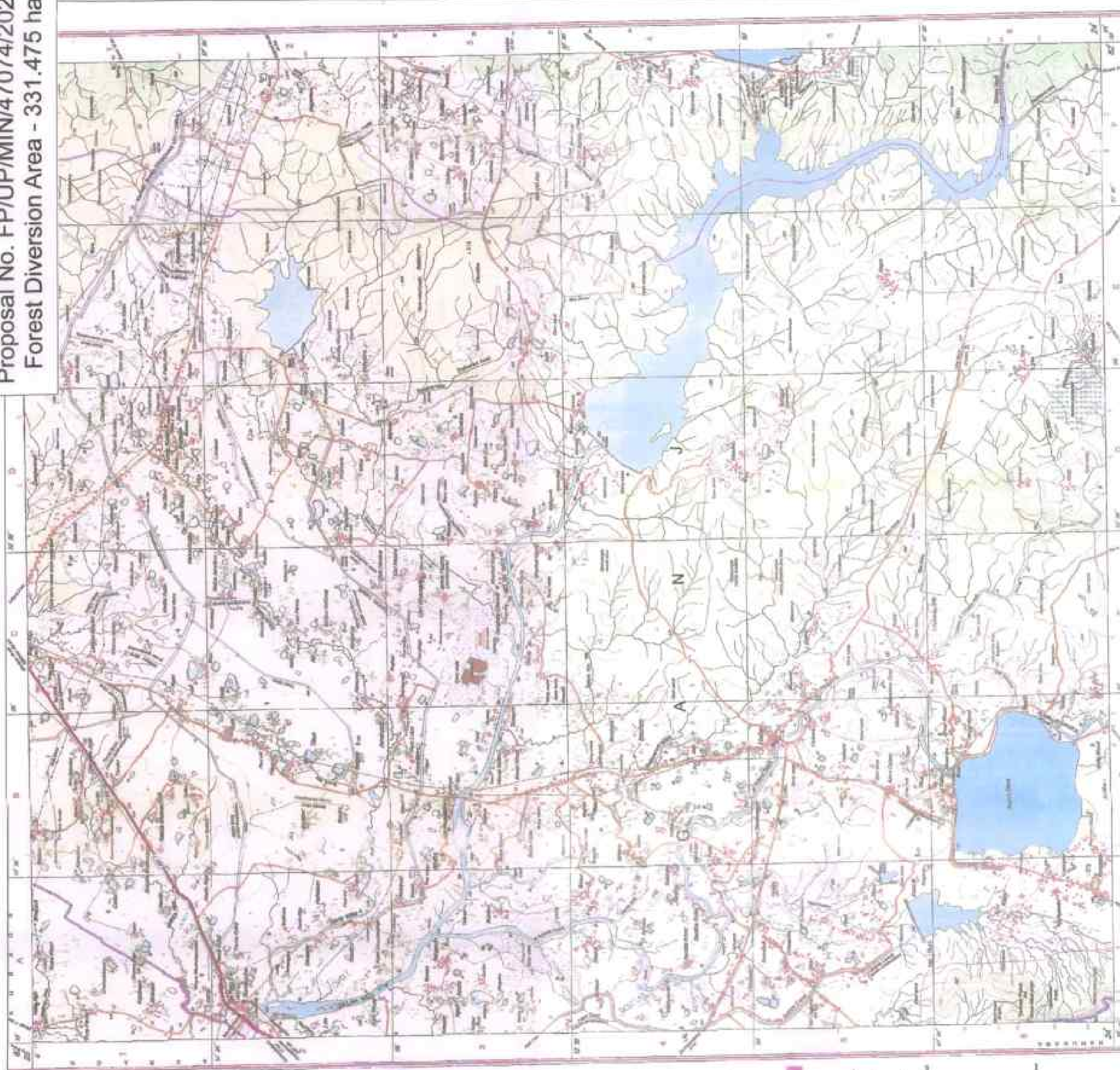
COMPILED BY

Scale 1:50,000



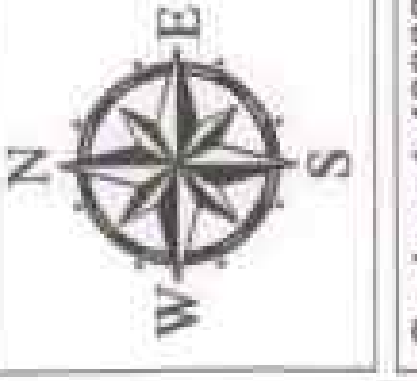
SOI Map Showing CA Land (NFL) of Uruwa in Mirzapur District

Proposal No. FPIJP/MIN/47074/2020
Forest Diversion Area - 331.475 ha



Index

- CA Land Point
- CA Land Area (NFL)



MIRZAPUR CA LAND AREA DETAILS

URUWA	PATCH 34	25.378 Ha
TOTAL AREA		25.378 Ha

DGPS COORDINATE OF CA LAND POINTS

Sl. No.	Point ID	Latitude	Longitude
1	C113	24° 53' 44.112" N	82° 20' 19.699" E
2	C114	24° 53' 51.639" N	82° 20' 23.420" E
3	C115	24° 53' 53.377" N	82° 20' 19.728" E
4	C116	24° 53' 57.618" N	82° 20' 22.377" E
5	C117	24° 53' 58.545" N	82° 20' 26.246" E
6	C118	24° 53' 56.276" N	82° 20' 32.239" E
7	C119	24° 53' 55.509" N	82° 20' 34.985" E
8	C120	24° 53' 51.549" N	82° 20' 33.105" E
9	C121	24° 53' 50.004" N	82° 20' 33.792" E
10	C122	24° 53' 48.167" N	82° 20' 38.255" E
11	C123	24° 53' 53.019" N	82° 20' 41.081" E
12	C124	24° 53' 50.028" N	82° 20' 45.895" E
13	C125	24° 53' 44.961" N	82° 20' 42.686" E
14	C126	24° 53' 43.427" N	82° 20' 43.619" E
15	C127	24° 53' 37.270" N	82° 20' 39.961" E
16	C128	24° 53' 38.123" N	82° 20' 37.712" E
17	C129	24° 53' 37.112" N	82° 20' 36.847" E
18	C130	24° 53' 37.900" N	82° 20' 34.680" E
19	C131	24° 53' 39.881" N	82° 20' 32.755" E
20	C132	24° 53' 42.392" N	82° 20' 30.978" E
21	C133	24° 53' 44.289" N	82° 20' 31.797" E
22	C134	24° 53' 49.610" N	82° 20' 32.652" E
23	C135	24° 53' 50.331" N	82° 20' 30.312" E
24	C136	24° 53' 46.483" N	82° 20' 28.188" E
25	C137	24° 53' 38.985" N	82° 20' 28.449" E
26	C138	24° 53' 40.589" N	82° 20' 26.392" E
27	C139	24° 53' 41.937" N	82° 20' 24.168" E
28	C140	24° 53' 43.379" N	82° 20' 22.041" E

MAP SHOWING CA LAND (NFL) FOR FOREST CLEARANCE IN KAJRAHAT LIMESTONE MINING BLOCK

No. G44W5
Scale 1:50,000

INDEX

G44Q1	G44Q2	G44Q3	G44Q4
G44Q5	G44Q6	G44Q7	G44Q8
G44Q9	G44Q10	G44Q11	G44Q12

LEGEND

SYMBOLS AND ABBREVIATIONS

PROJECTIONS

UNIT

SCALE

DATE

BY

CHECKED

APPROVED

PROJECT NO.

PROJECT NAME

PROJECT LOCATION

PROJECT STATUS

PROJECT DESCRIPTION

PROJECT OBJECTIVES

PROJECT BENEFITS

PROJECT RISKS

PROJECT CHALLENGES

PROJECT OPPORTUNITIES

PROJECT CONSTRAINTS

PROJECT DELIVERABLES

PROJECT MILESTONES

PROJECT BUDGET

PROJECT RESOURCES

PROJECT STAKEHOLDERS

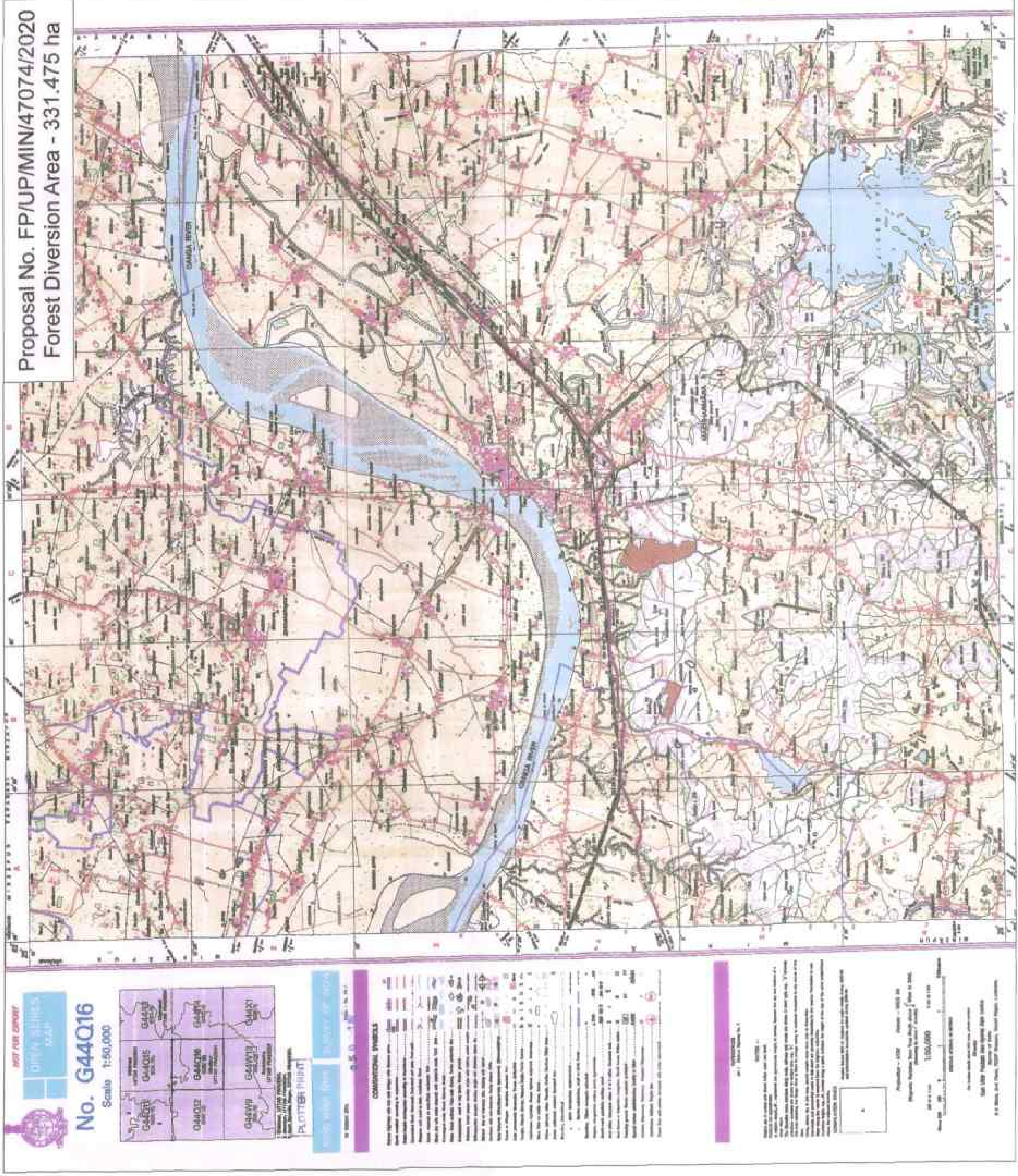
PROJECT CONTACTS

PROJECT REFERENCES

PROJECT NOTES



SOI Map Showing CA Land (NFL) of Sindhora & Chak Gambhira in Mirzapur District



Proposal No. FP/UP/MIN/47074/2020
Forest Diversion Area - 331.475 ha

Index

- CA Land Point
- CA Land Area (NFL)

Scale = 1:40000



MIRZAPUR CA LAND AREA DETAILS		
SINDHORA	PATCH 22	30.111 Ha
CHAK GAMBHIRA	PATCH 8	127.502 Ha
TOTAL AREA		157.613 Ha

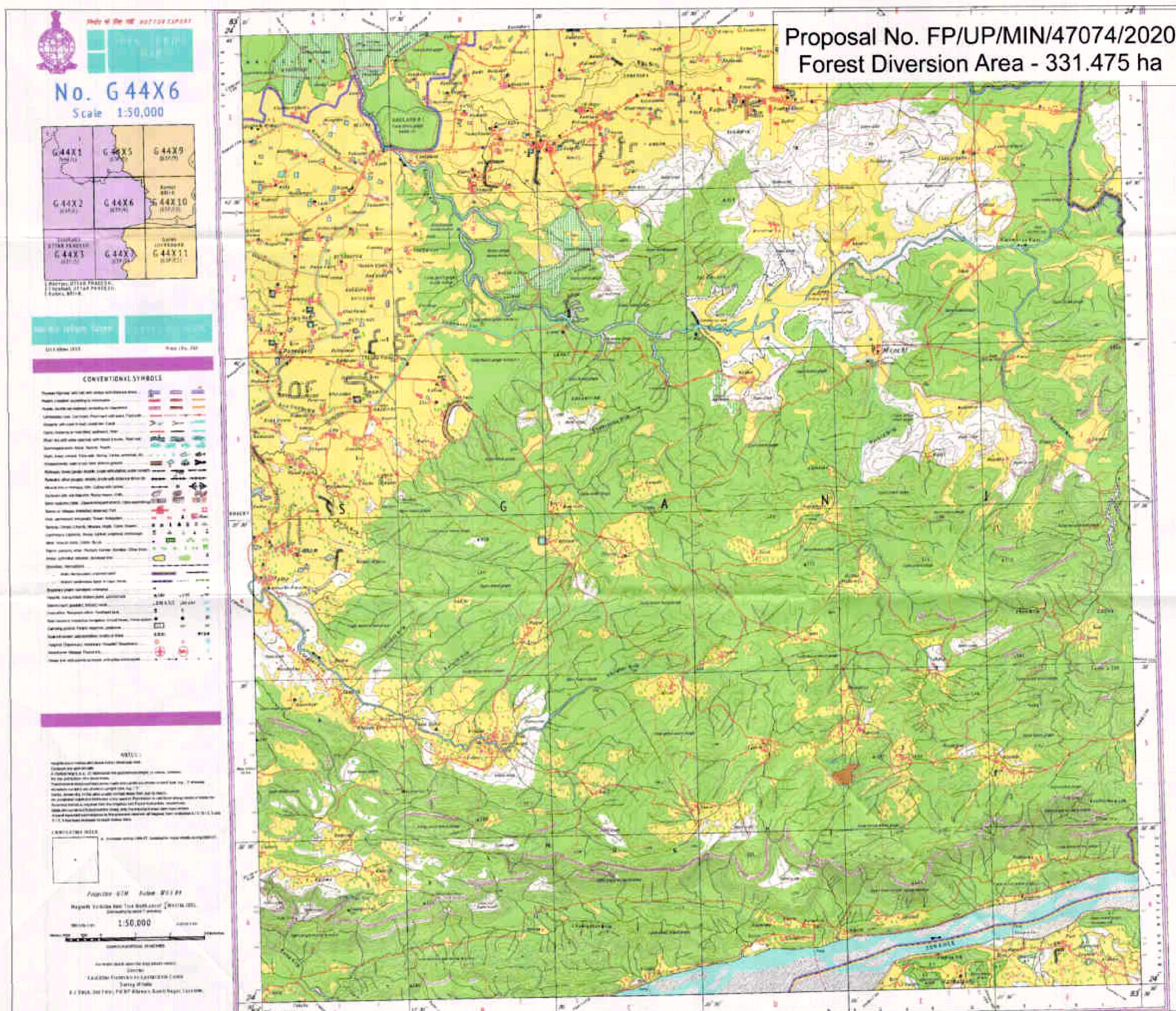
DIPS COORDINATE OF CA LAND POINTS			
Sl. No.	Point ID	Latitude	Longitude
1	C1	25° 0' 48.142" N	82° 51' 13.337" E
2	C2	25° 0' 30.250" N	82° 51' 36.307" E
3	C3	25° 0' 35.407" N	82° 51' 35.437" E
4	C4	25° 0' 36.234" N	82° 51' 28.739" E
5	C5	25° 0' 32.077" N	82° 51' 28.027" E
6	C6	25° 0' 32.040" N	82° 51' 28.289" E
7	C7	25° 0' 28.012" N	82° 51' 28.507" E
8	C8	25° 0' 28.539" N	82° 51' 28.452" E
9	C9	25° 0' 27.207" N	82° 51' 30.017" E
10	C10	25° 0' 28.853" N	82° 51' 32.548" E
11	C11	25° 0' 24.637" N	82° 51' 35.367" E
12	C12	25° 0' 30.174" N	82° 51' 31.487" E
13	C13	25° 0' 16.031" N	82° 51' 34.833" E
14	C14	25° 0' 16.031" N	82° 51' 34.833" E
15	C15	25° 0' 17.507" N	82° 51' 31.487" E
16	C16	25° 0' 12.514" N	82° 51' 31.507" E
17	C17	25° 0' 12.617" N	82° 51' 30.348" E
18	C18	25° 0' 4.789" N	82° 51' 29.148" E
19	C19	25° 0' 3.312" N	82° 51' 31.035" E
20	C20	25° 0' 61.609" N	82° 51' 29.818" E
21	C21	25° 0' 61.609" N	82° 51' 29.818" E
22	C22	25° 0' 61.609" N	82° 51' 29.818" E
23	C23	25° 0' 59.030" N	82° 51' 33.045" E
24	C24	25° 0' 47.470" N	82° 51' 33.045" E
25	C25	25° 0' 46.187" N	82° 51' 32.527" E
26	C26	25° 0' 45.028" N	82° 51' 33.571" E
27	C27	25° 0' 45.028" N	82° 51' 33.571" E
28	C28	25° 0' 37.705" N	82° 51' 34.415" E
29	C29	25° 0' 37.705" N	82° 51' 34.415" E
30	C30	25° 0' 28.308" N	82° 51' 24.142" E
31	C31	25° 0' 38.019" N	82° 51' 21.317" E
32	C32	25° 0' 42.939" N	82° 51' 18.571" E
33	C33	25° 0' 52.240" N	82° 51' 13.047" E
34	C34	25° 0' 2.981" N	82° 51' 10.287" E
35	C35	25° 0' 25.281" N	82° 51' 18.187" E
36	C36	25° 0' 30.543" N	82° 51' 18.248" E
37	C37	25° 0' 30.747" N	82° 51' 21.742" E
38	C38	25° 0' 30.331" N	82° 51' 20.171" E
39	C39	25° 0' 30.331" N	82° 51' 20.171" E
40	C40	25° 0' 30.331" N	82° 51' 20.171" E
41	C41	25° 0' 41.058" N	82° 51' 14.408" E
42	C42	25° 0' 11.480" N	82° 48' 58.504" E
43	C43	25° 0' 9.579" N	82° 48' 58.507" E
44	C44	25° 0' 9.579" N	82° 48' 58.507" E
45	C45	25° 0' 7.530" N	82° 48' 54.747" E
46	C46	25° 0' 6.320" N	82° 48' 50.353" E
47	C47	25° 0' 4.220" N	82° 48' 46.960" E
48	C48	25° 0' 58.028" N	82° 48' 2.042" E

Digitized by
www.digitizedindia.com

MAP SHOWING CA LAND (NFL) FOR FOREST CLEARANCE IN KAJRAHAT LIMESTONE MINING BLOCK



SOI Map Showing CA (DFL) of Chaura in Sonbhadra District



Index

- CA Point (DFL)
- CA Area (DFL)

Scale = 1:40000

0 1,000 2,000 4,000 6,000 8,000 Meters

CA (DFL) AREA DETAILS IN SONBHADRA DIVISION

CHAURA	PATCH 1C	25.32 Ha
TOTAL AREA		25.32 Ha

DGPS COORDINATE OF CA (DFL) POINTS

Sl. No.	Point ID	Latitude	Longitude
1	C1	24° 33' 21.921" N	83° 24' 48.821" E
2	C2	24° 33' 23.539" N	83° 24' 53.013" E
3	C3	24° 33' 24.536" N	83° 24' 56.631" E
4	C4	24° 33' 25.786" N	83° 25' 0.737" E
5	C5	24° 33' 28.304" N	83° 25' 3.305" E
6	C6	24° 33' 29.870" N	83° 25' 4.657" E
7	C7	24° 33' 30.950" N	83° 25' 6.706" E
8	C8	24° 33' 30.728" N	83° 25' 7.969" E
9	C9	24° 33' 30.029" N	83° 25' 10.342" E
10	C10	24° 33' 30.480" N	83° 25' 12.336" E
11	C11	24° 33' 30.990" N	83° 25' 14.435" E
12	C12	24° 33' 30.954" N	83° 25' 17.355" E
13	C13	24° 33' 29.965" N	83° 25' 17.671" E
14	C14	24° 33' 27.964" N	83° 25' 16.428" E
15	C15	24° 33' 26.757" N	83° 25' 14.299" E
16	C16	24° 33' 26.619" N	83° 25' 12.564" E
17	C17	24° 33' 24.634" N	83° 25' 9.593" E
18	C18	24° 33' 22.771" N	83° 25' 8.571" E
19	C19	24° 33' 22.087" N	83° 25' 8.672" E
20	C20	24° 33' 20.253" N	83° 25' 9.806" E
21	C21	24° 33' 18.728" N	83° 25' 9.950" E
22	C22	24° 33' 17.267" N	83° 25' 9.307" E
23	C23	24° 33' 16.018" N	83° 25' 8.742" E
24	C24	24° 33' 15.107" N	83° 25' 9.391" E
25	C25	24° 33' 14.316" N	83° 25' 9.759" E
26	C26	24° 33' 12.042" N	83° 25' 4.646" E
27	C27	24° 33' 12.114" N	83° 25' 2.036" E
28	C28	24° 33' 12.152" N	83° 25' 0.004" E
29	C29	24° 33' 11.913" N	83° 24' 58.406" E
30	C30	24° 33' 11.503" N	83° 24' 56.232" E
31	C31	24° 33' 12.662" N	83° 24' 54.682" E
32	C32	24° 33' 14.354" N	83° 24' 52.692" E
33	C33	24° 33' 16.518" N	83° 24' 51.590" E
34	C34	24° 33' 17.654" N	83° 24' 51.194" E
35	C35	24° 33' 19.144" N	83° 24' 50.031" E
36	C36	24° 33' 20.791" N	83° 24' 48.656" E

MAP SHOWING CA (DFL) FOR FOREST CLEARANCE IN KAJRAHAT LIMESTONE MINING BLOCK

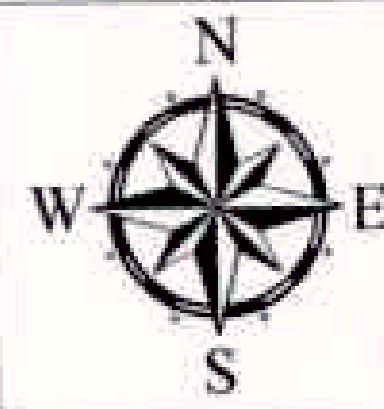
Ultratech Cement Limited
Kajrahat, Sonbhadra (UP)

SOI Map Showing CA (DFL) of Majhui in Sonbhadra District

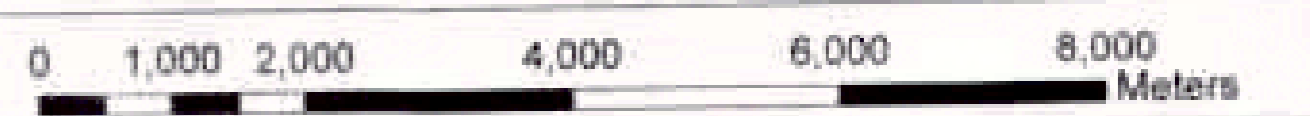
Proposal No. FP/UP/MIN/47074/2020
Forest Diversion Area - 331.475 ha

Index

- CA Point (DFL)
- CA Area (DFL)



Scale = 1:40000



CA (DFL) AREA DETAILS IN SONBHADRA DIVISION

MAJHUI	PATCH 1B	23.42 Ha
TOTAL AREA		23.42 Ha

DGPS COORDINATE OF CA (DFL) POINTS

Sl. No.	Point ID	Latitude	Longitude
1	C1	24° 38' 51.593" N	83° 24' 41.294" E
2	C2	24° 38' 53.183" N	83° 24' 42.891" E
3	C3	24° 38' 54.781" N	83° 24' 44.634" E
4	C4	24° 38' 56.423" N	83° 24' 47.187" E
5	C5	24° 38' 57.485" N	83° 24' 48.901" E
6	C6	24° 38' 58.704" N	83° 24' 50.477" E
7	C7	24° 39' 0.381" N	83° 24' 52.105" E
8	C8	24° 39' 2.278" N	83° 24' 53.947" E
9	C9	24° 39' 2.525" N	83° 24' 54.031" E
10	C10	24° 39' 1.510" N	83° 24' 56.322" E
11	C11	24° 39' 0.449" N	83° 24' 57.699" E
12	C12	24° 38' 59.379" N	83° 24' 58.910" E
13	C13	24° 38' 58.360" N	83° 25' 0.625" E
14	C14	24° 38' 57.805" N	83° 25' 2.630" E
15	C15	24° 38' 57.268" N	83° 25' 3.765" E
16	C16	24° 38' 56.319" N	83° 25' 5.931" E
17	C17	24° 38' 55.675" N	83° 25' 8.157" E
18	C18	24° 38' 54.756" N	83° 25' 7.712" E
19	C19	24° 38' 52.610" N	83° 25' 6.361" E
20	C20	24° 38' 50.127" N	83° 25' 4.967" E
21	C21	24° 38' 48.428" N	83° 25' 3.051" E
22	C22	24° 38' 47.944" N	83° 25' 1.899" E
23	C23	24° 38' 46.613" N	83° 24' 59.449" E
24	C24	24° 38' 45.647" N	83° 24' 54.943" E
25	C25	24° 38' 45.793" N	83° 24' 52.245" E
26	C26	24° 38' 46.175" N	83° 24' 49.960" E
27	C27	24° 38' 47.301" N	83° 24' 45.455" E
28	C28	24° 38' 47.961" N	83° 24' 43.306" E
29	C29	24° 38' 49.243" N	83° 24' 41.887" E





District Collector
 Joint Forest Officer
 Forest Officer

MAP SHOWING CA (DFL) FOR FOREST CLEARANCE IN KAJRAHAT LIMESTONE MINING BLOCK

No. G 44X6
Scale 1:50,000

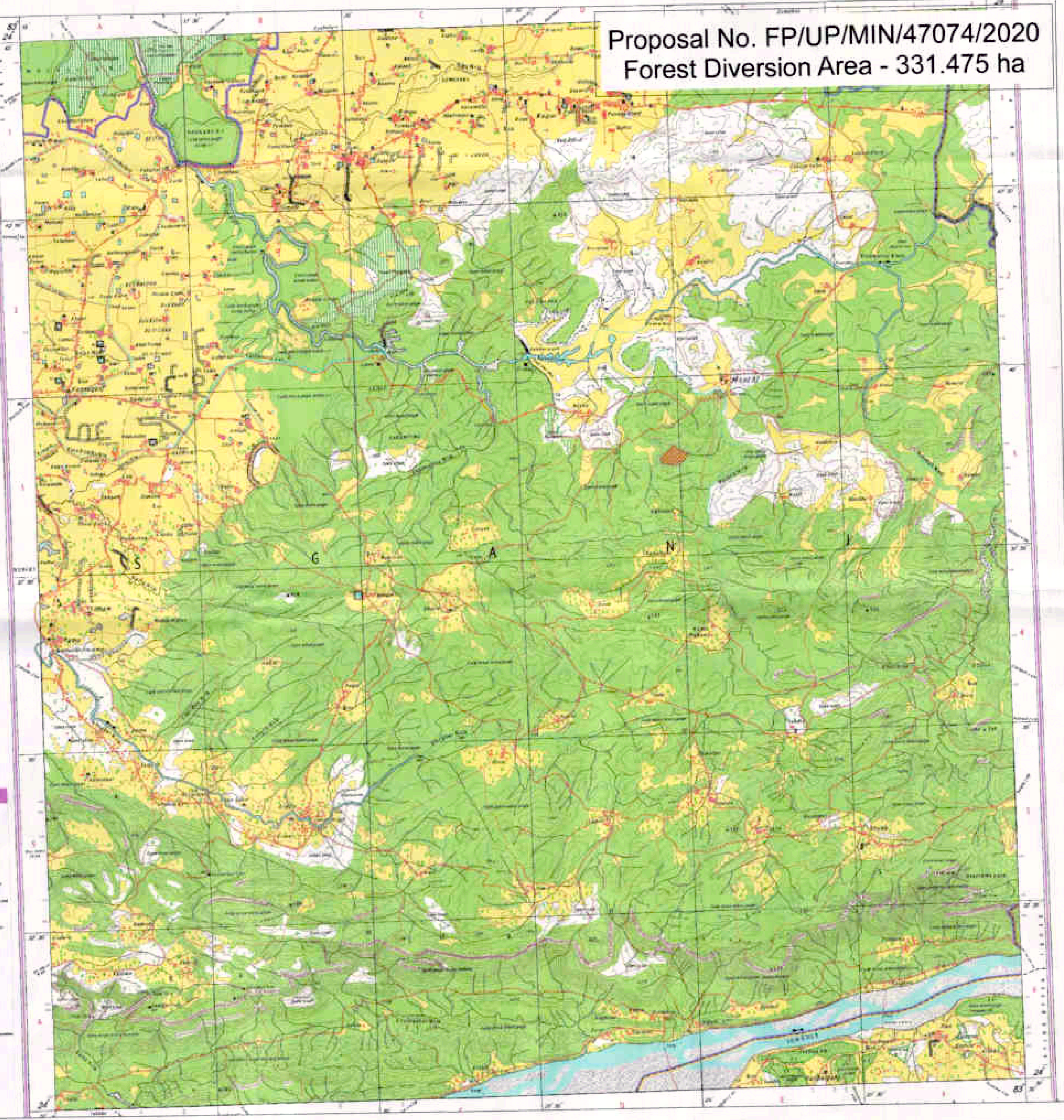


CONVENTIONAL SYMBOLS

NOTES

CONTRACTOR'S SIGNATURE

Proposed - DFL
 Scale - 1:50,000
 Surveyed by
 Date



SOI Map Showing CA (DFL) of Suarsot in Sonbhadra District

No. G 44X6
Scale 1:50,000

CONVENTIONAL SYMBOLS

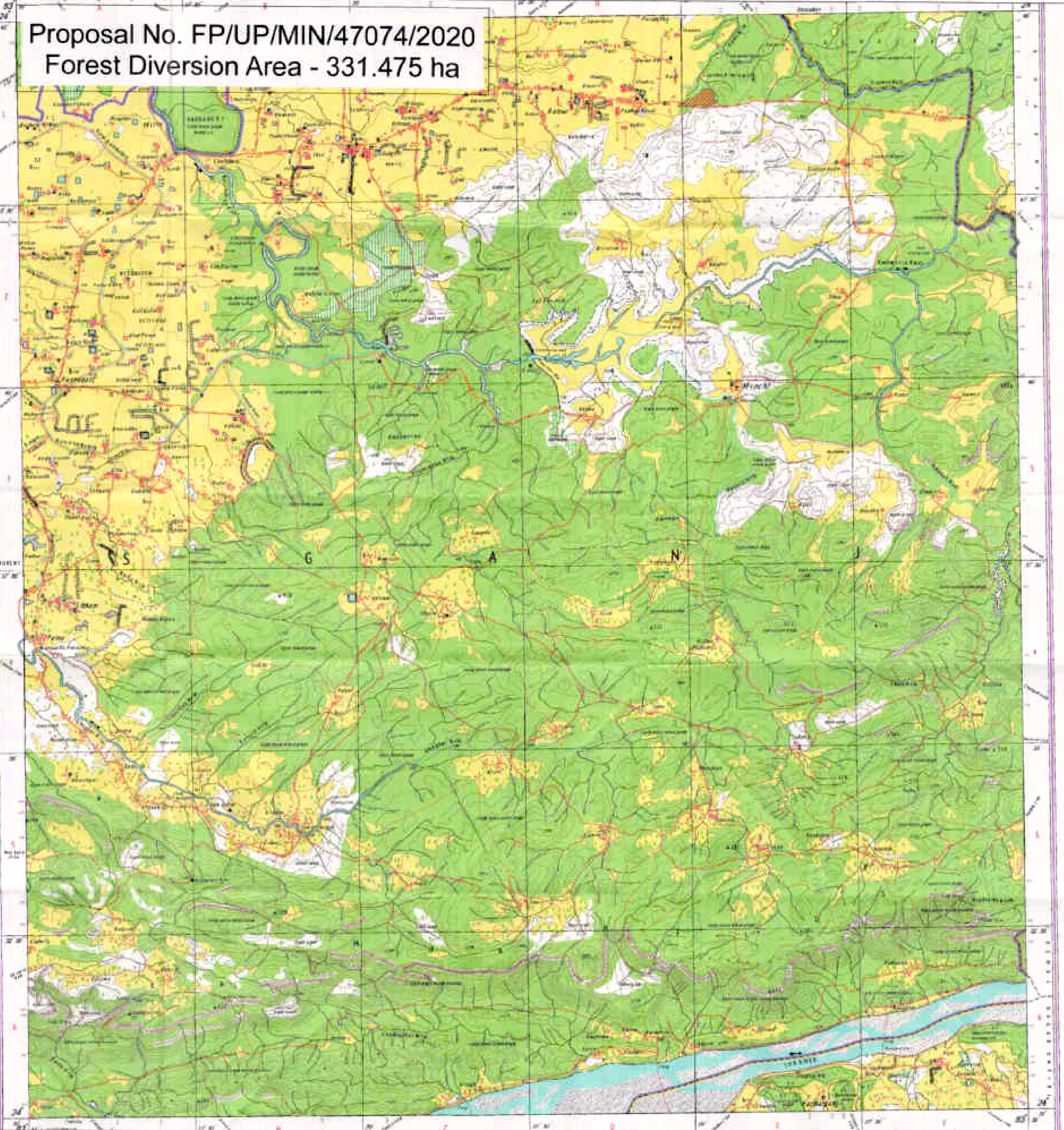
PROJ. DATA

Scale 1:50,000

Scale of the map 1:50,000

Scale of the map 1:50,000

Proposal No. FP/UP/MIN/47074/2020
Forest Diversion Area - 331.475 ha



Index

- CA Point (DFL)
- CA Area (DFL)

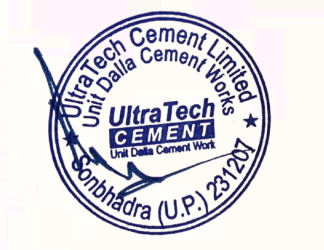
Scale = 1:40000

CA (DFL) AREA DETAILS IN SONBHADRA DIVISION

SUARSOT	PATCH 1C	22.39 Ha
TOTAL AREA		22.39 Ha

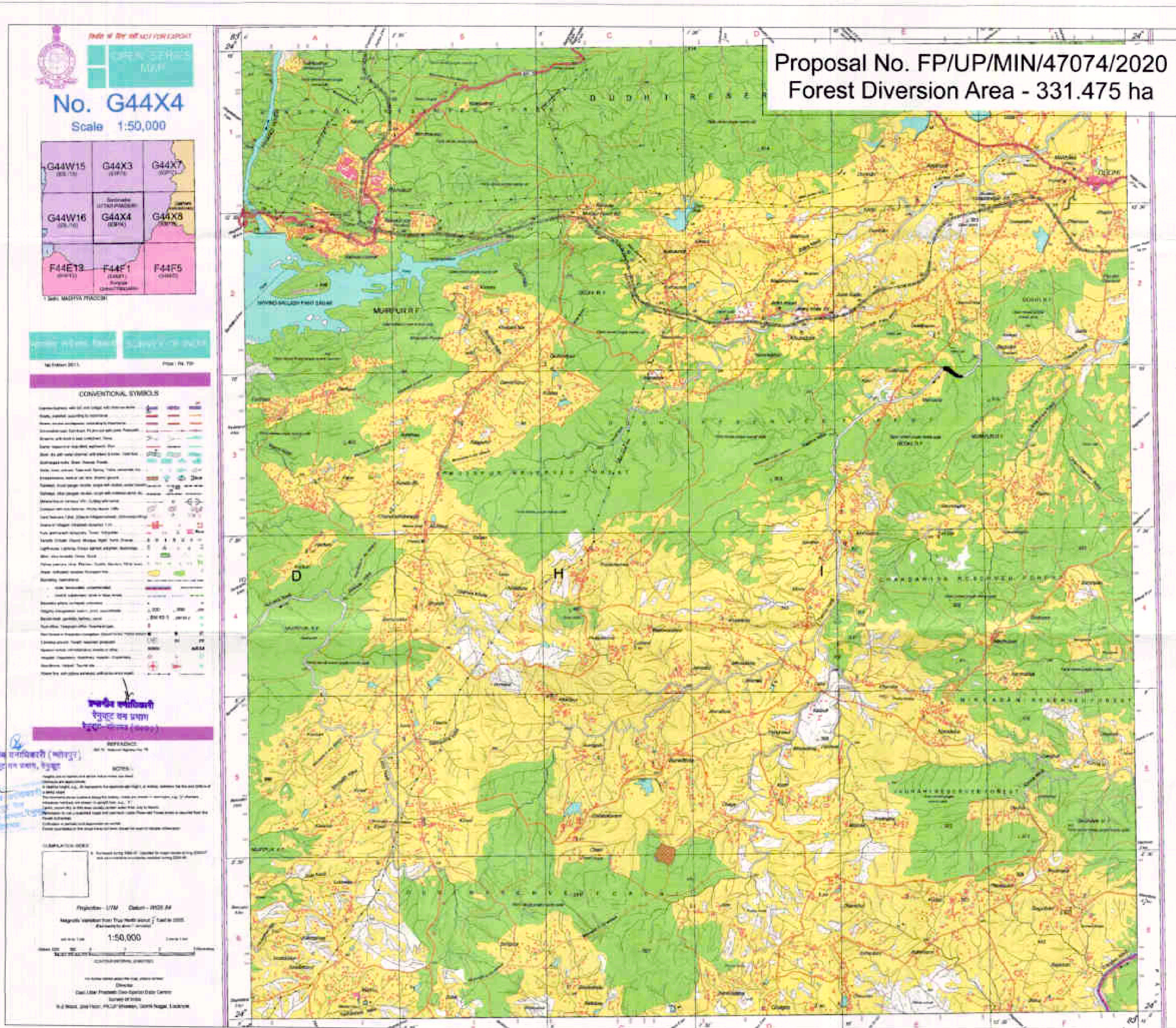
DGPS COORDINATE OF CA (DFL) POINTS			DGPS COORDINATE OF CA (DFL) POINTS		
Sl. No.	Point ID	Latitude Longitude	Sl. No.	Point ID	Latitude Longitude
1	C1	24° 43' 45.802" N 83° 24' 58.277" E	46	C46	24° 43' 50.744" N 83° 25' 28.825" E
2	C2	24° 43' 47.130" N 83° 24' 59.072" E	47	C47	24° 43' 50.453" N 83° 25' 29.569" E
3	C3	24° 43' 47.294" N 83° 24' 59.831" E	48	C48	24° 43' 50.387" N 83° 25' 31.057" E
4	C4	24° 43' 47.529" N 83° 25' 0.886" E	49	C49	24° 43' 50.100" N 83° 25' 31.808" E
5	C5	24° 43' 47.879" N 83° 25' 1.389" E	50	C50	24° 43' 49.711" N 83° 25' 31.529" E
6	C6	24° 43' 48.075" N 83° 25' 2.003" E	51	C51	24° 43' 48.904" N 83° 25' 31.862" E
7	C7	24° 43' 48.372" N 83° 25' 3.082" E	52	C52	24° 43' 48.435" N 83° 25' 31.397" E
8	C8	24° 43' 50.250" N 83° 25' 3.496" E	53	C53	24° 43' 48.180" N 83° 25' 30.527" E
9	C9	24° 43' 51.067" N 83° 25' 4.239" E	54	C54	24° 43' 47.377" N 83° 25' 29.689" E
10	C10	24° 43' 51.522" N 83° 25' 4.984" E	55	C55	24° 43' 47.292" N 83° 25' 29.098" E
11	C11	24° 43' 51.777" N 83° 25' 5.927" E	56	C56	24° 43' 47.095" N 83° 25' 27.070" E
12	C12	24° 43' 51.938" N 83° 25' 7.300" E	57	C57	24° 43' 46.829" N 83° 25' 26.584" E
13	C13	24° 43' 52.093" N 83° 25' 8.824" E	58	C58	24° 43' 46.668" N 83° 25' 26.223" E
14	C14	24° 43' 52.395" N 83° 25' 10.478" E	59	C59	24° 43' 46.307" N 83° 25' 25.588" E
15	C15	24° 43' 54.084" N 83° 25' 11.907" E	60	C60	24° 43' 46.238" N 83° 25' 25.020" E
16	C16	24° 43' 53.573" N 83° 25' 12.371" E	61	C61	24° 43' 46.059" N 83° 25' 24.312" E
17	C17	24° 43' 53.072" N 83° 25' 12.867" E	62	C62	24° 43' 45.837" N 83° 25' 23.157" E
18	C18	24° 43' 54.021" N 83° 25' 13.513" E	63	C63	24° 43' 46.896" N 83° 25' 22.490" E
19	C19	24° 43' 55.342" N 83° 25' 14.437" E	64	C64	24° 43' 45.921" N 83° 25' 21.685" E
20	C20	24° 43' 55.692" N 83° 25' 14.990" E	65	C65	24° 43' 45.872" N 83° 25' 20.943" E
21	C21	24° 43' 55.429" N 83° 25' 16.544" E	66	C66	24° 43' 45.671" N 83° 25' 19.948" E
22	C22	24° 43' 56.432" N 83° 25' 16.996" E	67	C67	24° 43' 45.871" N 83° 25' 19.532" E
23	C23	24° 43' 57.743" N 83° 25' 17.214" E	68	C68	24° 43' 46.297" N 83° 25' 18.753" E
24	C24	24° 43' 57.711" N 83° 25' 18.005" E	69	C69	24° 43' 46.652" N 83° 25' 17.582" E
25	C25	24° 43' 58.130" N 83° 25' 18.278" E	70	C70	24° 43' 46.798" N 83° 25' 16.658" E
26	C26	24° 43' 58.683" N 83° 25' 18.624" E	71	C71	24° 43' 46.745" N 83° 25' 15.609" E
27	C27	24° 43' 59.513" N 83° 25' 19.072" E	72	C72	24° 43' 46.734" N 83° 25' 14.743" E
28	C28	24° 43' 59.538" N 83° 25' 19.847" E	73	C73	24° 43' 46.957" N 83° 25' 13.981" E
29	C29	24° 43' 59.251" N 83° 25' 20.659" E	74	C74	24° 43' 46.614" N 83° 25' 12.976" E
30	C30	24° 43' 58.421" N 83° 25' 21.567" E	75	C75	24° 43' 46.498" N 83° 25' 12.209" E
31	C31	24° 43' 58.859" N 83° 25' 22.283" E	76	C76	24° 43' 45.972" N 83° 25' 11.696" E
32	C32	24° 43' 59.713" N 83° 25' 22.999" E	77	C77	24° 43' 45.498" N 83° 25' 10.981" E
33	C33	24° 43' 59.638" N 83° 25' 24.050" E	78	C78	24° 43' 45.778" N 83° 25' 9.959" E
34	C34	24° 43' 59.443" N 83° 25' 25.250" E	79	C79	24° 43' 46.137" N 83° 25' 8.380" E
35	C35	24° 43' 58.107" N 83° 25' 26.480" E	80	C80	24° 43' 45.678" N 83° 25' 7.270" E
36	C36	24° 43' 58.488" N 83° 25' 26.632" E	81	C81	24° 43' 45.948" N 83° 25' 6.927" E
37	C37	24° 43' 57.431" N 83° 25' 27.311" E	82	C82	24° 43' 46.142" N 83° 25' 4.992" E
38	C38	24° 43' 56.253" N 83° 25' 27.930" E	83	C83	24° 43' 45.380" N 83° 25' 4.364" E
39	C39	24° 43' 55.274" N 83° 25' 28.113" E	84	C84	24° 43' 45.242" N 83° 25' 4.080" E
40	C40	24° 43' 54.880" N 83° 25' 28.557" E	85	C85	24° 43' 45.269" N 83° 25' 3.171" E
41	C41	24° 43' 53.587" N 83° 25' 28.187" E	86	C86	24° 43' 45.100" N 83° 25' 2.071" E
42	C42	24° 43' 52.832" N 83° 25' 27.688" E	87	C87	24° 43' 45.193" N 83° 25' 0.895" E
43	C43	24° 43' 52.297" N 83° 25' 27.789" E	88	C88	24° 43' 45.501" N 83° 24' 59.693" E
44	C44	24° 43' 51.920" N 83° 25' 28.141" E	89	C89	24° 43' 45.526" N 83° 24' 58.790" E
45	C45	24° 43' 51.287" N 83° 25' 28.242" E	90	C90	24° 43' 45.813" N 83° 24' 58.295" E

Sub-Divisional Officer
 District Officer
 District Collector



MAP SHOWING CA (DFL) FOR FOREST CLEARANCE IN KAJRAHAT LIMESTONE MINING BLOCK

SOI Map Showing CA (DFL) of Cheri in Sonbhadra District

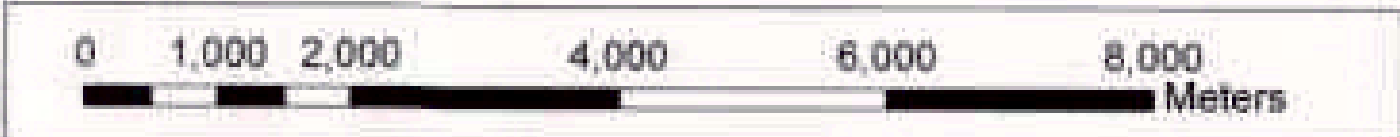
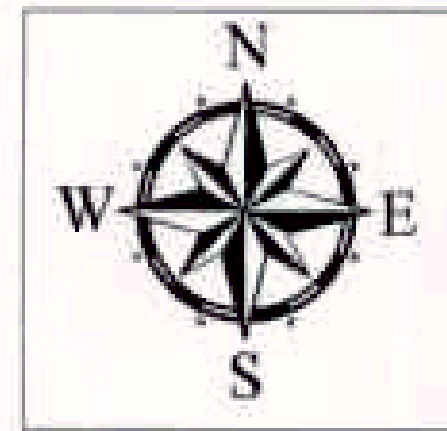


Proposal No. FP/UP/MIN/47074/2020
Forest Diversion Area - 331.475 ha

Index

- CA Point (DFL)
- CA Area (DFL)

Scale = 1:40000



CA (DFL) AREA DETAILS IN RENUKOOT DIVISION

CHERI	PATCH 1	24.24 Ha
TOTAL AREA		24.24 Ha

DGPS COORDINATE OF CA (DFL) POINTS

Sl. No.	Point ID	Latitude	Longitude
1	C1	24° 2' 29.860" N	83° 6' 50.412" E
2	C2	24° 2' 35.103" N	83° 6' 53.385" E
3	C3	24° 2' 40.415" N	83° 6' 57.452" E
4	C4	24° 2' 37.915" N	83° 7' 3.868" E
5	C5	24° 2' 35.987" N	83° 7' 9.877" E
6	C6	24° 2' 34.305" N	83° 7' 11.908" E
7	C7	24° 2' 29.308" N	83° 7' 10.687" E
8	C8	24° 2' 24.305" N	83° 7' 8.923" E
9	C9	24° 2' 22.136" N	83° 7' 8.320" E
10	C10	24° 2' 20.307" N	83° 7' 5.017" E
11	C11	24° 2' 20.365" N	83° 7' 3.787" E
12	C12	24° 2' 21.913" N	83° 7' 2.670" E
13	C13	24° 2' 23.705" N	83° 6' 56.710" E
14	C14	24° 2' 23.950" N	83° 6' 53.583" E
15	C15	24° 2' 25.601" N	83° 6' 53.069" E
16	C16	24° 2' 27.106" N	83° 6' 52.362" E
17	C17	24° 2' 27.688" N	83° 6' 52.588" E
18	C18	24° 2' 28.461" N	83° 6' 50.884" E

CONVENTIONAL SYMBOLS

Legend for various symbols including roads, rivers, and land use.

रजिस्ट्रार कार्यालय
रेनुकूट वन प्रभाग
बुंदेलखण्ड (उत्तर)

उप-रजिस्ट्रार कार्यालय (आगरा)
रेनुकूट वन प्रभाग, रेनुकूट

REPRODUCTION

Scale 1:50,000

Projection: UTM Datum: WGS 84

Magnetic Variation from True North about 2° East in 2020.


Scale 1:50,000

Map showing CA (DFL) for Forest Clearance in Kajrahat Limestone Mining Block

MAP SHOWING CA (DFL) FOR FOREST CLEARANCE IN KAJRAHAT LIMESTONE MINING BLOCK

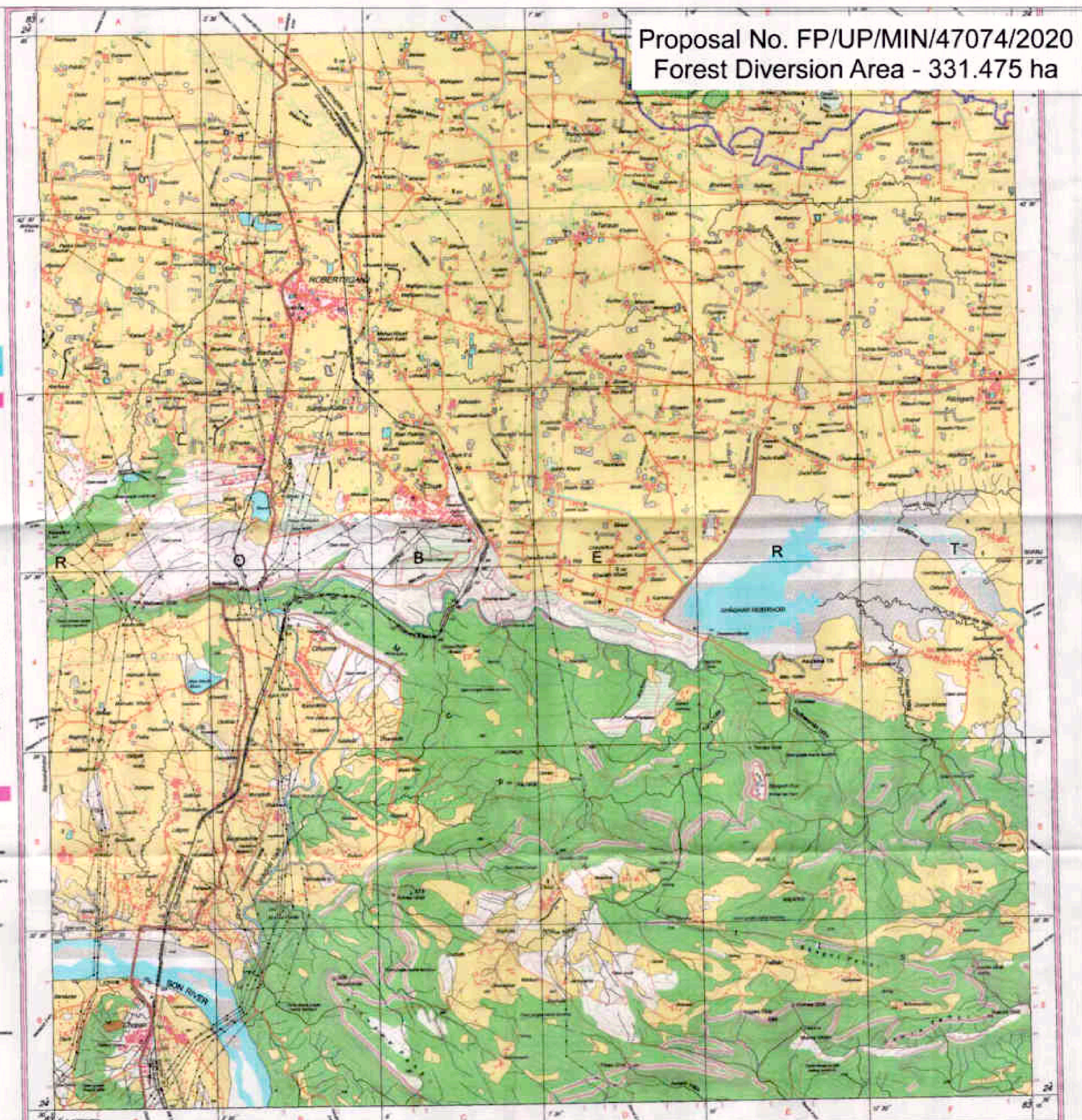


SOI Map Showing CA (DFL) of Chopan in Sonbhadra District




No. G44X2
 Scale 1:50,000

G44W13	G44X1	G44X5
G44W14	G44X2	G44X6
G44W15	G44X3	G44X7



Index

- CA Point (DFL)
- CA Area (DFL)


 Scale = 1:40000

0 1,000 2,000 4,000 6,000 8,000
 Meters

CA (DFL) AREA DETAILS IN OBRA DIVISION

CHOPAN	PATCH 2G	10 Ha
TOTAL AREA		10 Ha

DGPS COORDINATE OF CA (DFL) POINTS

Sl. No.	Point ID	Latitude	Longitude
1	C1	24° 31' 10.150" N	83° 0' 44.719" E
2	C2	24° 31' 14.834" N	83° 1' 0.203" E
3	C3	24° 31' 13.692" N	83° 1' 1.696" E
4	C4	24° 31' 11.343" N	83° 1' 6.081" E
5	C5	24° 31' 8.537" N	83° 1' 3.121" E
6	C6	24° 31' 7.603" N	83° 1' 0.676" E
7	C7	24° 31' 4.937" N	83° 0' 52.912" E
8	C8	24° 31' 5.246" N	83° 0' 49.862" E
9	C9	24° 31' 6.559" N	83° 0' 47.128" E

PLOTTER PRINT

CONVENTIONAL SYMBOLS

Proposed by: **UPM**
 Prepared by: **UPM**
 Scale: **1:50,000**
 Date: **2020**

Prepared by: **UPM**
 Prepared by: **UPM**
 Scale: **1:50,000**
 Date: **2020**



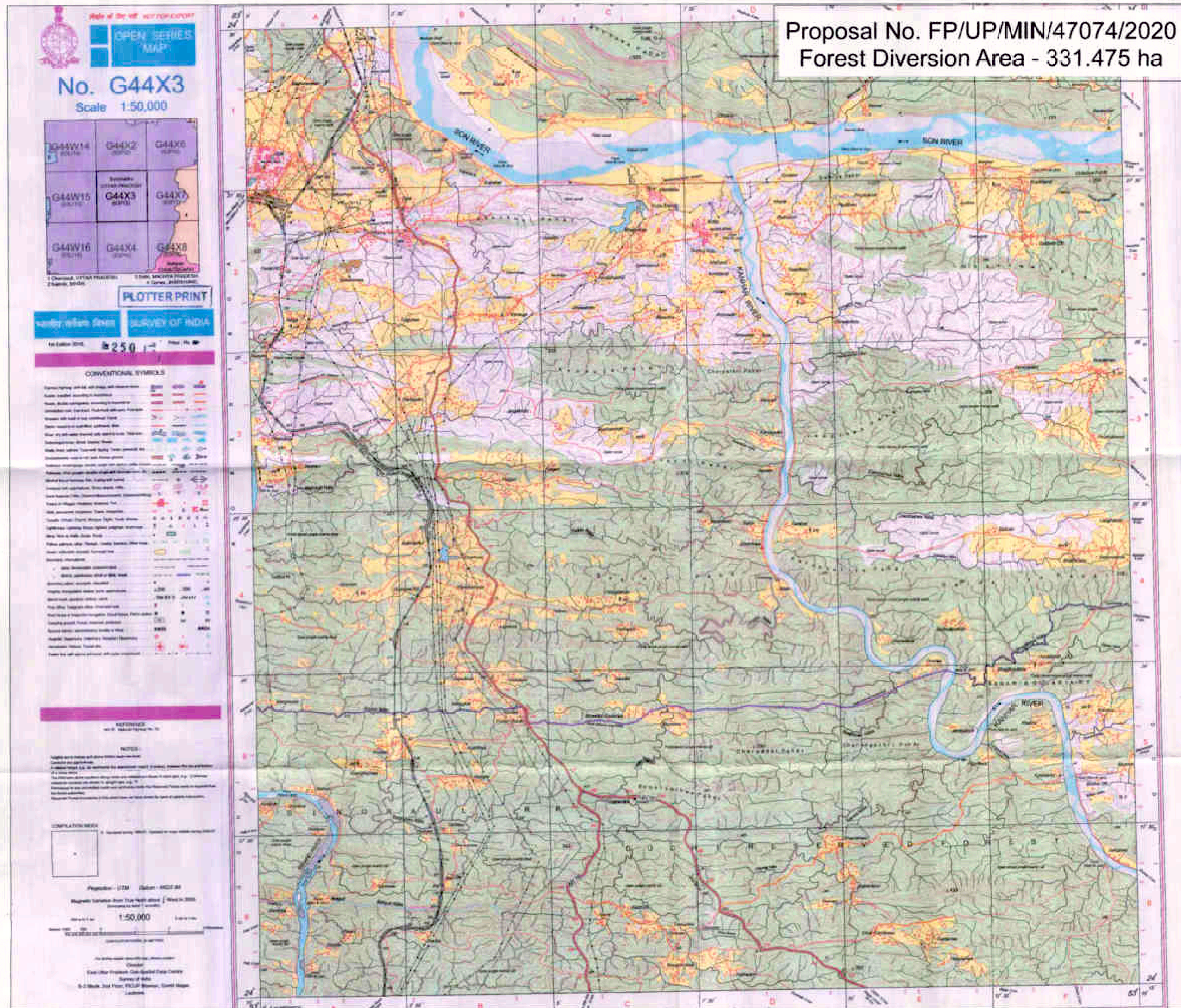






MAP SHOWING CA (DFL) FOR FOREST CLEARANCE IN KAJRAHAT LIMESTONE MINING BLOCK

SOI Map Showing CA (DFL) of Dala in Sonbhadra District



Index

- CA Point (DFL)
- CA Area (DFL)

Scale = 1:40000

CA (DFL) AREA DETAILS IN OBRA DIVISION

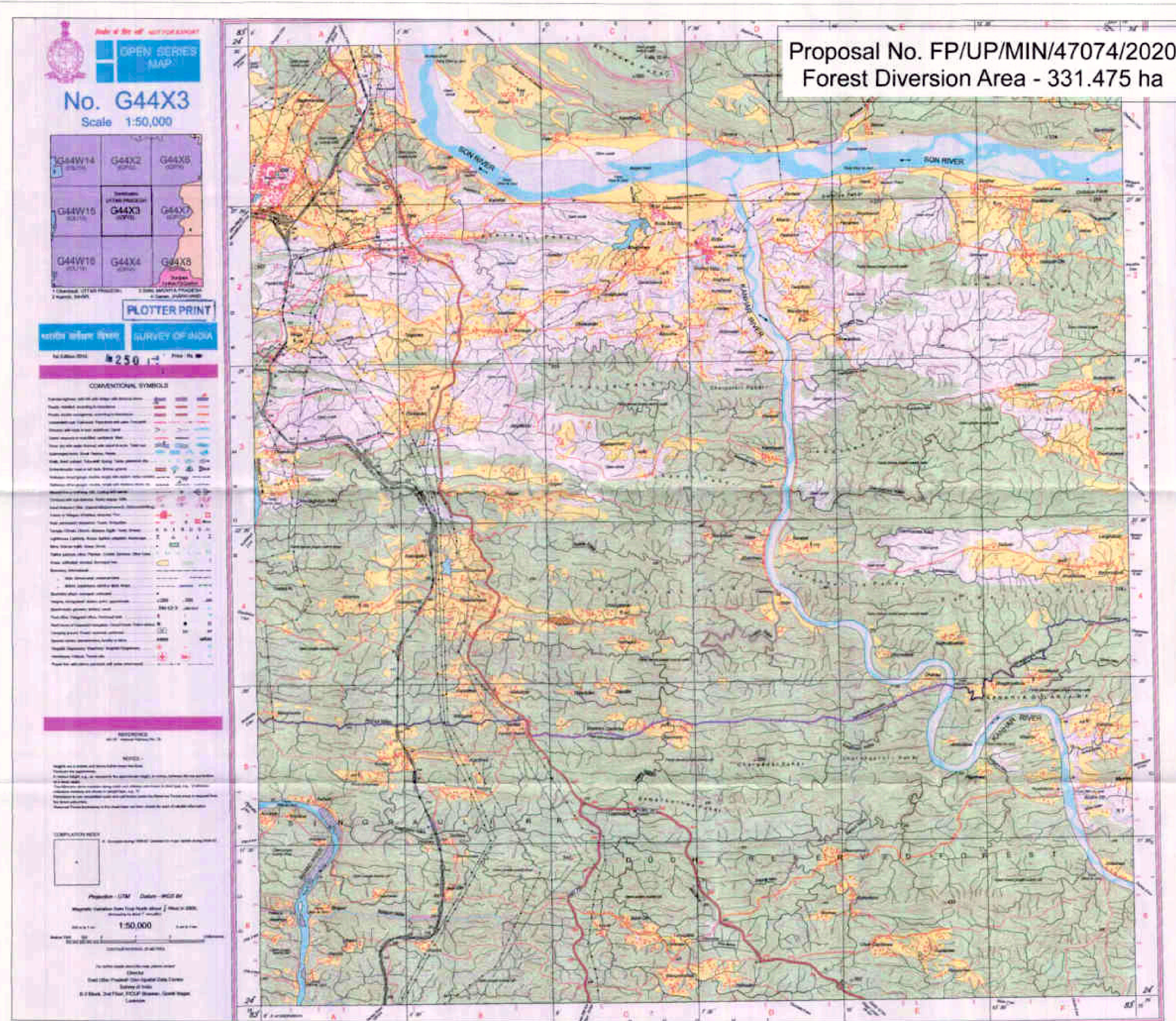
DALA	PATCH 2H	10 Ha
TOTAL AREA		10 Ha

DGPS COORDINATE OF CA (DFL) POINTS

Sl. No.	Point ID	Latitude	Longitude
1	C1	24° 26' 20.511" N	83° 1' 35.892" E
2	C2	24° 26' 20.246" N	83° 1' 44.850" E
3	C3	24° 26' 21.073" N	83° 1' 45.539" E
4	C4	24° 26' 22.989" N	83° 1' 45.241" E
5	C5	24° 26' 24.036" N	83° 1' 56.786" E
6	C6	24° 26' 20.169" N	83° 1' 57.608" E
7	C7	24° 26' 18.562" N	83° 1' 56.203" E
8	C8	24° 26' 16.767" N	83° 1' 55.043" E
9	C9	24° 26' 16.427" N	83° 1' 51.817" E
10	C10	24° 26' 15.732" N	83° 1' 51.026" E
11	C11	24° 26' 17.280" N	83° 1' 49.459" E
12	C12	24° 26' 18.234" N	83° 1' 48.318" E
13	C13	24° 26' 18.044" N	83° 1' 47.878" E
14	C14	24° 26' 17.870" N	83° 1' 46.974" E
15	C15	24° 26' 14.518" N	83° 1' 47.468" E
16	C16	24° 26' 13.855" N	83° 1' 44.708" E
17	C17	24° 26' 13.435" N	83° 1' 41.693" E
18	C18	24° 26' 17.381" N	83° 1' 41.333" E
19	C19	24° 26' 17.292" N	83° 1' 40.054" E
20	C20	24° 26' 17.421" N	83° 1' 38.225" E
21	C21	24° 26' 17.457" N	83° 1' 36.466" E
22	C22	24° 26' 18.421" N	83° 1' 36.318" E

MAP SHOWING CA (DFL) FOR FOREST CLEARANCE IN KAJRAHAT LIMESTONE MINING BLOCK

SOI Map Showing CA (DFL) of Hathwani in Sonbhadra District



Index

- CA Point (DFL)
- CA Area (DFL)



Scale = 1:40000



CA (DFL) AREA DETAILS IN OBRA DIVISION

HATHWANI	PATCH 2F	10 Ha
TOTAL AREA		10 Ha

DGPS COORDINATE OF CA (DFL) POINTS

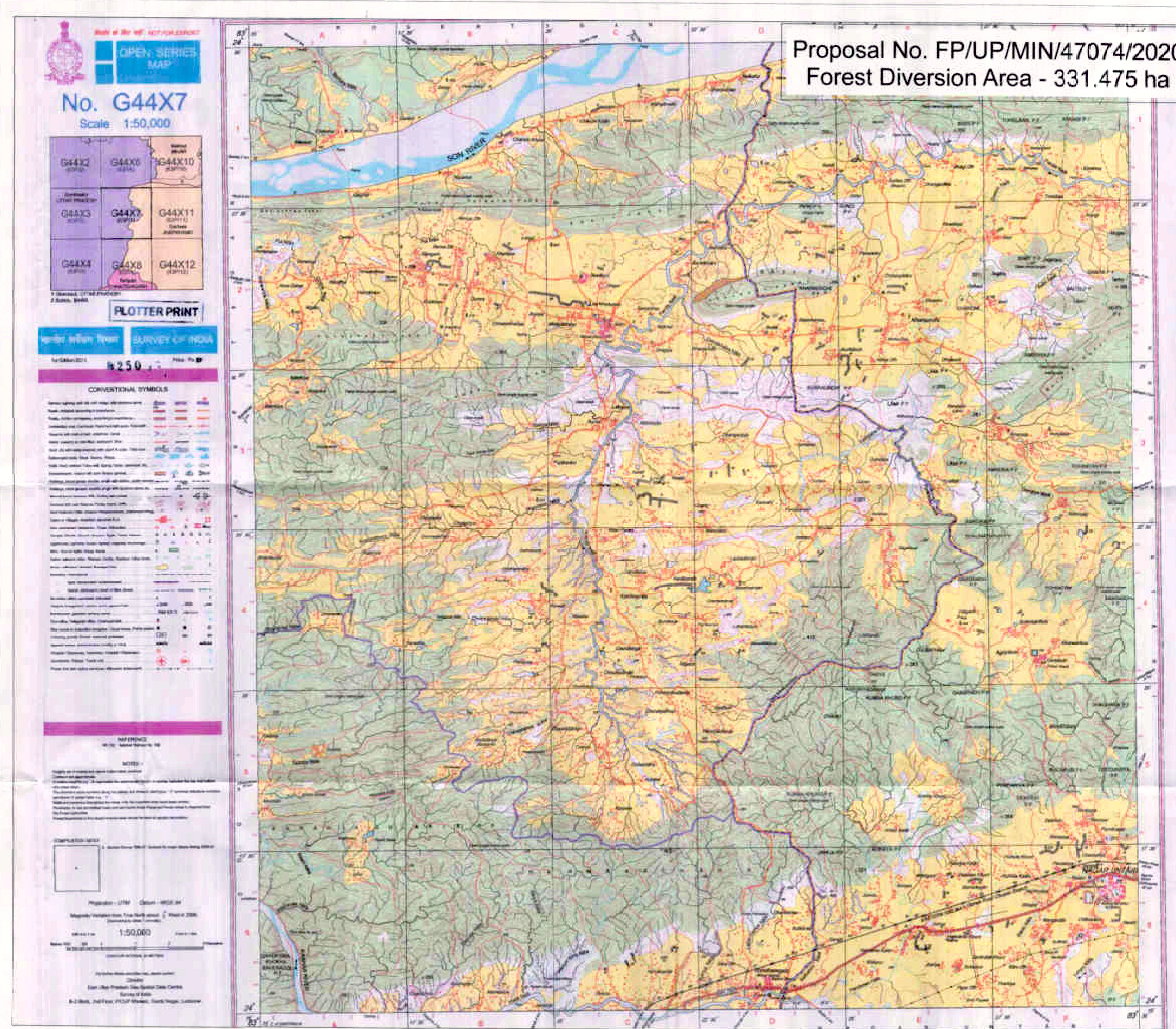
Sl. No.	Point ID	Latitude	Longitude
1	C1	24° 20' 58.043" N	83° 5' 0.592" E
2	C2	24° 20' 58.997" N	83° 5' 0.614" E
3	C3	24° 21' 0.132" N	83° 5' 0.798" E
4	C4	24° 21' 0.648" N	83° 5' 1.464" E
5	C5	24° 21' 1.113" N	83° 5' 2.283" E
6	C6	24° 21' 1.492" N	83° 5' 3.166" E
7	C7	24° 21' 1.597" N	83° 5' 4.109" E
8	C8	24° 21' 1.563" N	83° 5' 5.681" E
9	C9	24° 21' 1.561" N	83° 5' 7.036" E
10	C10	24° 21' 1.709" N	83° 5' 7.458" E
11	C11	24° 21' 0.523" N	83° 5' 9.865" E
12	C12	24° 21' 0.761" N	83° 5' 11.290" E
13	C13	24° 21' 0.749" N	83° 5' 13.103" E
14	C14	24° 21' 0.903" N	83° 5' 14.101" E
15	C15	24° 21' 1.416" N	83° 5' 16.312" E
16	C16	24° 21' 0.800" N	83° 5' 18.085" E
17	C17	24° 20' 59.987" N	83° 5' 19.645" E
18	C18	24° 21' 0.098" N	83° 5' 21.160" E
19	C19	24° 20' 59.730" N	83° 5' 23.005" E
20	C20	24° 20' 59.424" N	83° 5' 24.749" E
21	C21	24° 20' 58.946" N	83° 5' 25.668" E
22	C22	24° 20' 58.336" N	83° 5' 26.437" E
23	C23	24° 20' 57.396" N	83° 5' 25.970" E
24	C24	24° 20' 56.212" N	83° 5' 25.735" E
25	C25	24° 20' 55.322" N	83° 5' 25.652" E
26	C26	24° 20' 54.987" N	83° 5' 24.828" E
27	C27	24° 20' 54.994" N	83° 5' 23.162" E
28	C28	24° 20' 55.281" N	83° 5' 20.037" E
29	C29	24° 20' 55.081" N	83° 5' 19.038" E
30	C30	24° 20' 54.618" N	83° 5' 18.367" E
31	C31	24° 20' 54.306" N	83° 5' 18.077" E
32	C32	24° 20' 54.360" N	83° 5' 16.094" E
33	C33	24° 20' 54.626" N	83° 5' 14.052" E
34	C34	24° 20' 55.042" N	83° 5' 11.914" E
35	C35	24° 20' 55.427" N	83° 5' 9.523" E
36	C36	24° 20' 55.666" N	83° 5' 7.447" E
37	C37	24° 20' 55.843" N	83° 5' 5.630" E
38	C38	24° 20' 57.107" N	83° 5' 5.524" E
39	C39	24° 20' 57.625" N	83° 5' 3.660" E
40	C40	24° 20' 57.932" N	83° 5' 2.531" E

MAP SHOWING CA (DFL) FOR
FOREST CLEARANCE IN
KAJRAHAT LIMESTONE
MINING BLOCK



उत्तर प्रदेश
जिला कार्यालय
मिर्जापुर

SOI Map Showing CA (DFL) of Khurdhanlhand in Sonbhadra District



Index

- CA Point (DFL)
- CA Area (DFL)



Scale = 1:40000



CA (DFL) AREA DETAILS IN OBRA DIVISION

KHURDHANLHAND	PATCH 2I	25 Ha
TOTAL AREA		25 Ha

DGPS COORDINATE OF CA (DFL) POINTS

Sl. No.	Point ID	Latitude	Longitude
1	C1	24° 25' 57.519" N	83° 22' 31.435" E
2	C2	24° 26' 0.412" N	83° 22' 31.758" E
3	C3	24° 26' 3.164" N	83° 22' 32.790" E
4	C4	24° 26' 5.163" N	83° 22' 35.480" E
5	C5	24° 26' 6.864" N	83° 22' 37.123" E
6	C6	24° 26' 8.605" N	83° 22' 40.492" E
7	C7	24° 26' 10.419" N	83° 22' 44.279" E
8	C8	24° 26' 12.209" N	83° 22' 46.682" E
9	C9	24° 26' 13.572" N	83° 22' 49.357" E
10	C10	24° 26' 17.035" N	83° 22' 52.278" E
11	C11	24° 26' 18.044" N	83° 22' 55.003" E
12	C12	24° 26' 20.498" N	83° 23' 0.153" E
13	C13	24° 26' 21.020" N	83° 23' 2.179" E
14	C14	24° 26' 20.603" N	83° 23' 5.569" E
15	C15	24° 26' 19.805" N	83° 23' 8.884" E
16	C16	24° 26' 20.242" N	83° 23' 12.034" E
17	C17	24° 26' 20.703" N	83° 23' 16.877" E
18	C18	24° 26' 22.128" N	83° 23' 22.413" E
19	C19	24° 26' 21.741" N	83° 23' 27.980" E
20	C20	24° 26' 18.618" N	83° 23' 18.861" E
21	C21	24° 26' 17.398" N	83° 23' 11.306" E
22	C22	24° 26' 11.629" N	83° 22' 57.840" E
23	C23	24° 26' 9.667" N	83° 22' 54.388" E
24	C24	24° 26' 4.652" N	83° 22' 47.282" E
25	C25	24° 26' 2.830" N	83° 22' 45.725" E

प्रमुख अधिकारी
 जिला प्रशासन
 सोनभद्रा जिला प्रशासन
 सोनभद्रा जिला प्रशासन
 जिला प्रशासन
 जिला प्रशासन

**MAP SHOWING CA (DFL) FOR
 FOREST CLEARANCE IN
 KAJRAHAT LIMESTONE
 MINING BLOCK**

SOI Map Showing CA (DFL) of Paraspani in Sonbhadra District

OPENTOP SERIES MAP
No. G44X3
 Scale 1:50,000

PLOTTER PRINT

CONVENTIONAL SYMBOLS

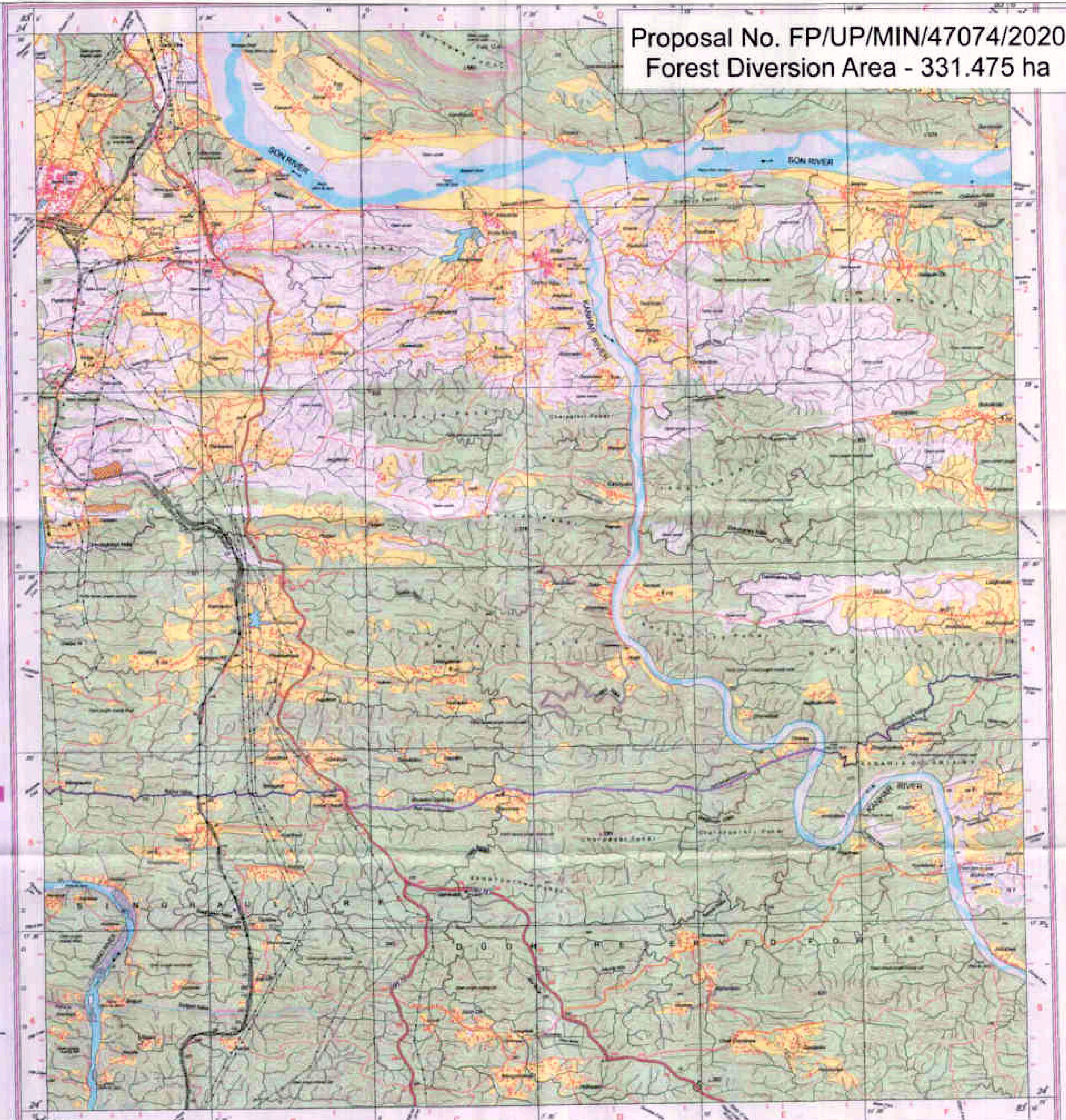
REFERENCE

NOTES

COMPLIANCE NOTE

Proposed by: **ICMR** / **ICMR** / **ICMR**
 Prepared by: **ICMR** / **ICMR** / **ICMR**
 Scale: **1:50,000**

ICMR, 2nd Floor, PCCP Building, Connaught Place, New Delhi, India



Index

- CA Point (DFL)
- CA Area (DFL)

Scale = 1:40000

0 1,000 2,000 4,000 6,000 8,000 Meters

CA (DFL) AREA DETAILS IN OBRA DIVISION

PARASPANI - 6	PATCH 2D	20 Ha
PARASPANI - 7	PATCH 2E	20 Ha
TOTAL AREA		40 Ha

DGPS COORDINATE OF CA (DFL) POINTS

Sl. No.	Point ID	Latitude	Longitude	Sl. No.	Point ID	Latitude	Longitude
1	C1	24° 23' 24.999" N	83° 0' 42.779" E	1	D1	24° 23' 55.794" N	83° 0' 47.355" E
2	C2	24° 23' 24.677" N	83° 0' 45.064" E	2	D2	24° 23' 56.180" N	83° 0' 50.134" E
3	C3	24° 23' 25.454" N	83° 0' 45.717" E	3	D3	24° 23' 57.331" N	83° 0' 52.901" E
4	C4	24° 23' 26.784" N	83° 0' 46.494" E	4	D4	24° 23' 57.248" N	83° 0' 56.144" E
5	C5	24° 23' 26.957" N	83° 0' 51.685" E	5	D5	24° 23' 57.348" N	83° 0' 58.861" E
6	C6	24° 23' 26.047" N	83° 0' 54.635" E	6	D6	24° 23' 58.399" N	83° 1' 0.945" E
7	C7	24° 23' 25.657" N	83° 0' 56.671" E	7	D7	24° 23' 58.070" N	83° 1' 2.077" E
8	C8	24° 23' 25.717" N	83° 0' 58.080" E	8	D8	24° 23' 59.770" N	83° 1' 5.308" E
9	C9	24° 23' 27.122" N	83° 1' 6.403" E	9	D9	24° 24' 0.988" N	83° 1' 7.148" E
10	C10	24° 23' 27.162" N	83° 1' 10.037" E	10	D10	24° 24' 2.618" N	83° 1' 8.488" E
11	C11	24° 23' 26.738" N	83° 1' 16.588" E	11	D11	24° 24' 3.900" N	83° 1' 10.950" E
12	C12	24° 23' 26.547" N	83° 1' 18.968" E	12	D12	24° 24' 1.788" N	83° 1' 12.728" E
13	C13	24° 23' 25.858" N	83° 1' 22.432" E	13	D13	24° 24' 2.431" N	83° 1' 14.264" E
14	C14	24° 23' 23.988" N	83° 1' 22.678" E	14	D14	24° 23' 56.760" N	83° 1' 15.708" E
15	C15	24° 23' 22.305" N	83° 1' 23.938" E	15	D15	24° 23' 57.058" N	83° 1' 16.858" E
16	C16	24° 23' 21.348" N	83° 1' 21.328" E	16	D16	24° 23' 53.258" N	83° 1' 15.038" E
17	C17	24° 23' 21.252" N	83° 1' 19.488" E	17	D17	24° 23' 51.584" N	83° 1' 15.488" E
18	C18	24° 23' 21.041" N	83° 1' 19.443" E	18	D18	24° 23' 51.052" N	83° 1' 12.218" E
19	C19	24° 23' 20.628" N	83° 1' 13.018" E	19	D19	24° 23' 50.988" N	83° 1' 8.238" E
20	C20	24° 23' 19.768" N	83° 1' 12.688" E	20	D20	24° 23' 50.148" N	83° 1' 7.208" E
21	C21	24° 23' 19.801" N	83° 1' 11.038" E	21	D21	24° 23' 49.704" N	83° 1' 6.388" E
22	C22	24° 23' 19.798" N	83° 1' 9.008" E	22	D22	24° 23' 49.948" N	83° 1' 3.384" E
23	C23	24° 23' 19.494" N	83° 1' 6.798" E	23	D23	24° 23' 48.548" N	83° 1' 0.048" E
24	C24	24° 23' 20.081" N	83° 1' 6.328" E	24	D24	24° 23' 48.271" N	83° 0' 58.418" E
25	C25	24° 23' 19.341" N	83° 1' 3.428" E	25	D25	24° 23' 47.688" N	83° 0' 55.388" E
26	C26	24° 23' 19.788" N	83° 1' 0.588" E	26	D26	24° 23' 47.808" N	83° 0' 53.228" E
27	C27	24° 23' 20.294" N	83° 0' 05.887" E	27	D27	24° 23' 46.888" N	83° 0' 50.788" E
28	C28	24° 23' 20.688" N	83° 0' 03.884" E	28	D28	24° 23' 46.824" N	83° 0' 50.218" E
29	C29	24° 23' 20.288" N	83° 0' 01.948" E	29	D29	24° 23' 51.102" N	83° 0' 55.631" E
30	C30	24° 23' 19.761" N	83° 0' 48.188" E	30	D30	24° 23' 52.241" N	83° 0' 51.104" E
31	C31	24° 23' 18.872" N	83° 0' 47.922" E	31	D31	24° 23' 53.121" N	83° 0' 47.828" E
32	C32	24° 23' 20.581" N	83° 0' 45.377" E	32	D32	24° 23' 53.778" N	83° 0' 47.368" E
33	C33	24° 23' 20.864" N	83° 0' 43.048" E				
34	C34	24° 23' 21.130" N	83° 0' 41.902" E				
35	C35	24° 23' 21.821" N	83° 0' 41.831" E				
36	C36	24° 23' 23.518" N	83° 0' 42.088" E				

ICMR, 2nd Floor, PCCP Building, Connaught Place, New Delhi, India

ICMR, 2nd Floor, PCCP Building, Connaught Place, New Delhi, India

ICMR, 2nd Floor, PCCP Building, Connaught Place, New Delhi, India

ICMR, 2nd Floor, PCCP Building, Connaught Place, New Delhi, India

MAP SHOWING CA (DFL) FOR FOREST CLEARANCE IN KAJRAHAT LIMESTONE MINING BLOCK