



निर्वात के लिए नहीं NOT FOR EXPORT

OPEN SERIES
MAP

No. F42L9

Scale 1:50,000

| | | |
|------------------|--|--------------------|
| F42F8 (41M/8) | F42F12 (41M/12) | F42F16 (41M/16) |
| F42L5 (41N/5) | F42L9 (41N/9) Surendranagar GUJARAT | F42L13 (41N/13) |
| F42L6 (41N/6) | F42L10 (41N/10) | F42L14 (41N/14) |

1 Ahmedabad, GUJARAT.

भारतीय सर्वेक्षण विभाग

SURVEY OF INDIA

1st Edition 2011.

Price : Rs. 70/-

CONVENTIONAL SYMBOLS

| | |
|---|--|
| Express highway with toll, with bridge, with distance stone | |
| Roads, metalled according to importance | |
| Roads, double cartway according to importance | |
| Unmetalled road, Cart-track, Pucca-track with pass, Foot-path | |
| Streams with track in bed, underlined, Canal | |
| Dams, masonry or rock-filled, earthenwork, Weir | |
| River, dry with water channel, with island & rocks, Tidal river | |
| Submerged rocks, Shoal, Swamp, Reeds | |
| Wells, lined, unlined, Tube-well, Spring, Tanks, perennial, dry | |
| Embankments, road or rail, tank, Broken ground | |
| Railways, broad gauge, double, single with station, under constr. | |
| Railways, other gauges, double, single with distance stone, do. | |
| Mineral line or tramway, Kln. Cutting with tunnel | |
| Contours with sub-features, Rocky slopes, Cliffs | |
| Sand features (1) flat, (2) sand-hill, (3) dunes, (4) shifting | |
| Towns or Villages, inhabited, deserted, Fort | |
| Hills, permanent, temporary, Tower, Lighthouse | |
| Temple, Chhatra, Church, Mosque, Synag, Tomb, Graves | |
| Lighthouse, Lightship, Buoy, lighted, unlighted, Anchorage | |
| Mine, Vine on hillside, Grass, Scrub | |
| Palms, papyrus, other, Plantain, Conifer, Bamboo, Other trees | |
| Areas: cultivated, wooded, Surveyed tree | |
| Boundary, international | |
| state, demarcated, undemarcated | |
| district, subdivision, taluk or taluk, forest | |
| Boundary pillars: surveyed, unlocated | |
| Heights, triangulated station, point, approximate | |
| Benchmark geodetic, tertiary, canal | |
| Post office, Overhead tank | |
| Rest house or inspection bungalow, Circuit house, Police station | |
| Camping ground, Forest, reserved, protected | |
| Special names: administrative, locality or tribal | |
| Hospital, Dispensary, Veterinary Hospital / Dispensary | |
| Aerodrome, Helped, Tourist site | |
| Power line: with pylons surveyed, with poles unsurveyed | |

NOTES :-

Heights and contours are in metres.
Contours are approximate.
The triangulated heights and contours in this sheet have not been adjusted to the heights of the spirit-levelled bench-marks and may not be strictly in accordance with them.
Cart-tracks in this sheet are generally motorable in dry season.
Tanks, shown dry, in this area usually contain water from July to December.

COMPILATION INDEX

A Surveyed during 1966-67. Updated for major details during 2005-06.



Projection - UTM Datum - WGS 84

Magnetic Variation from True North about $\frac{1}{2}$ West in 2005.
(Decreasing by about 1" annually)

500 m to 1 cm
1:50,000
2 cm to 1 km
Metres 1000 500 0 1 2 3 Kilometres

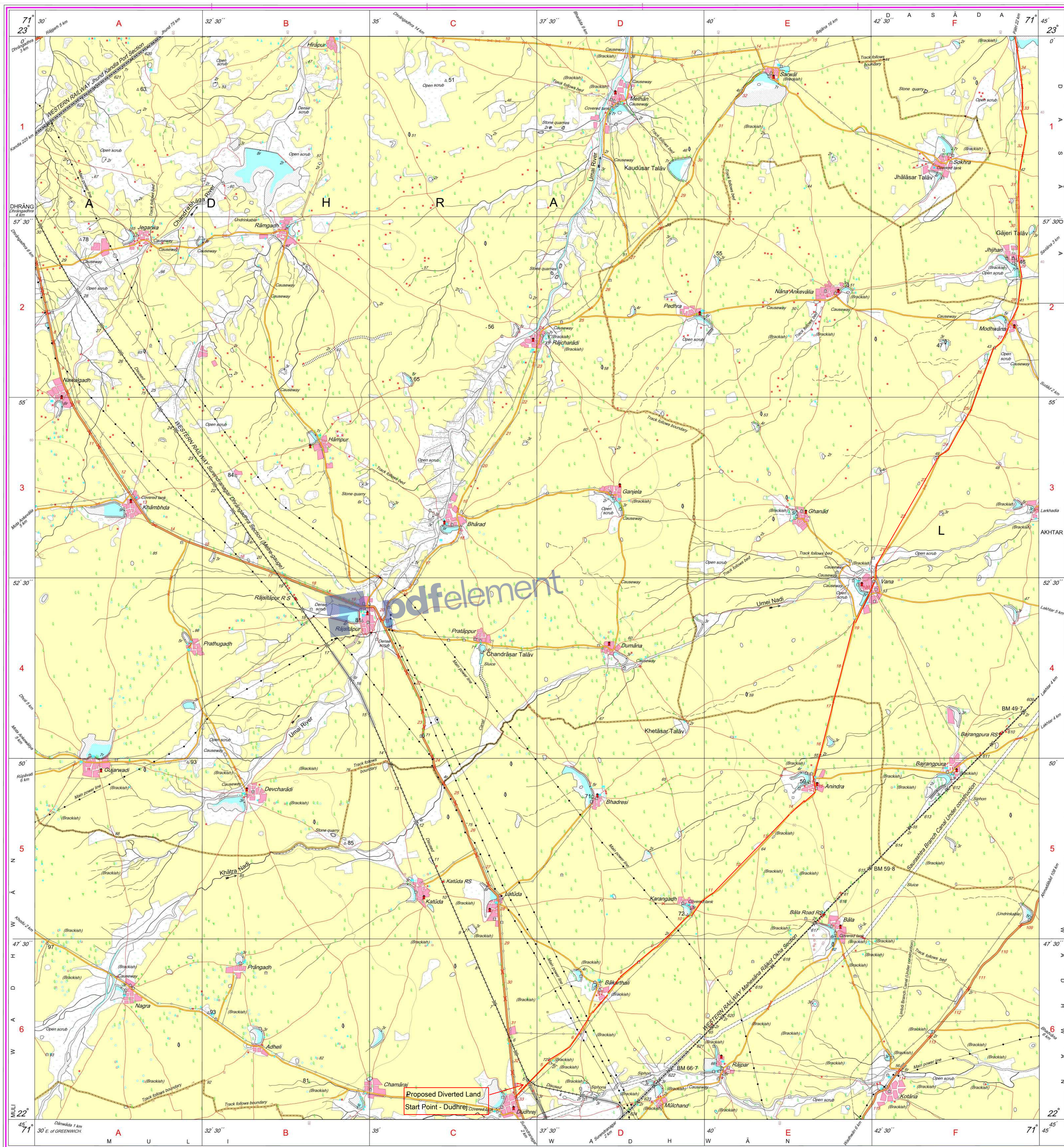
CONTOUR INTERVAL, 20 METRES

For further details about this map, please contact
Director
Gujarat, Daman & Diu Geo-Spatial Data Centre
Survey of India, Sector-10(A)
Gandhinagar.

WEBSITE - www.surveyofindia.gov.in

Reproduction in whole or part by any means is prohibited
without the written permission of Survey of India, the
National Mapping Agency.

GOVERNMENT OF INDIA COPYRIGHT, 2011.



REG. No. SPO 011 (GD&D GDC 1:50,000)

भारत के नक्शे, सर्वेक्षण, और, के विषय में जानकारी,
Published under the direction of Swarna Subba Rao, B.E., Surveyor General of India,
Survey of India, Hathi Barkala Estate, Post Box No. 37, Dehra Dun-248001 (Uttarakhand)
Department of Science & Technology, Government of India.

PRINTED AT THE SOUTHERN PRINTING GROUP OF SURVEY OF INDIA



निर्वात के लिए नहीं NOT FOR EXPORT

OPEN SERIES
MAP

No. F42F12

Scale 1:50,000

| | | |
|--|--|--------------------|
| F42F7 (41M/7) Kachchh GUJARAT | F42F11 (41M/11) | F42F15 (41M/15) |
| F42F8 (41M/8) | F42F12 (41M/12) Surendranagar GUJARAT | F42F16 (41M/16) |
| F42L5 (41N/5) | F42L9 (41N/9) | F42L13 (41N/13) |

1 Ahmedabad, GUJARAT.
2 Patan, GUJARAT.

भारतीय सर्वेक्षण विभाग

SURVEY OF INDIA

1st Edition 2009.

Price : Rs. 50/-

CONVENTIONAL SYMBOLS

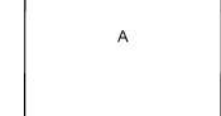
| | | |
|--|--|----|
| Express highway, with toll, with bridge, with distance stone | | 20 |
| Roads, metalled, according to importance | | |
| Roads, double carriageway, according to importance | | |
| Unmetalled road, Cart-track, Pack-track with pass, Foot-path | | |
| Streams with track in bed, undefined, Canal | | |
| Dams, masonry or rock-filled, earthwork, Weir | | |
| River, dry with water channel, with island & rocks, Tidal river | | |
| Submerged rocks, Shoal, Swamp, Reeds | | |
| Wells, lined, unlined, Tube-well, Spring, Tanks, perennial, dry | | |
| Embankments, road or rail, tank, Broken ground | | |
| Railways, broad gauge, double, single with station, under constn | | |
| Railways, other gauges, double, single with distance stone, do | | |
| Mineral line or tramway, Kin, Cutting with tunnel | | |
| Contours with sub-features, Rocky slopes, Cliffs | | |
| Sand features (1) Flat, (2) sand-hills, permanent, (3) dunes, shifting | | |
| Towns or Villages, inhabited, deserted, Fort | | |
| Huts, permanent, temporary, Tower, Antiquities | | |
| Temple, Chhatra, Church, Mosque, Sighn, Tomb, Graves | | |
| Lighthouse, Lightship, Buoy, lighted, unlighted, Anchorage | | |
| Mine, Vm on trellis, Grass, Scrub | | |
| Palms, palmyra, other, Plantain, Conifer, Bamboo, Other trees | | |
| Areas, cultivated, wooded, Surveyed tree | | |
| Boundary, international | | |
| state, demarcated, undemarcated | | |
| district, subdivision, tahsil or taluk, forest | | |
| Boundary pillars, surveyed, unlocated | | |
| Heights, triangulated, station, point, approximate | | |
| Bench-mark, geodetic, tertiary, canal | | |
| Post office, Telegraph office, Overhead tank | | |
| Rest house or inspection bungalow, Club house, Police station | | |
| Camping ground, Forest, reserved, protected | | |
| Spaced names, administrative, locality or tribal | | |
| Hospital, Dispensary, Veterinary, Hospital / Dispensary | | |
| Aerodrome, Helipad, Tourist site | | |
| Power line, with pylons surveyed, with poles unsurveyed | | |

NOTES

Heights are in metres and above Indian mean sea level.
Contours are approximate.
The area of Kachchh District falling in this sheet is not included in any block.
Cart-track in this sheet are generally motorable (four-wheel drive) in dry season.
Tanks, shown dry in this area usually contain water from July to March.

COMPILATION INDEX

A. Surveyed during 1986-87. Updated for major details during 2005-06.



Projection - UTM Datum - WGS 84

Magnetic Variation from True North about 1° West in 2005.

(Decreasing by about 1" annually)

1:50,000

500 m to 1 cm 2 cm to 1 km

Metres 1000 500 0 1 2 Kilometres

CONTour INTERVAL 20 METRES

For further details about this map, please contact

Director

Gujarat, Damán & Diu Geo-Spatial Data Centre

Survey of India, Sector-10(A)

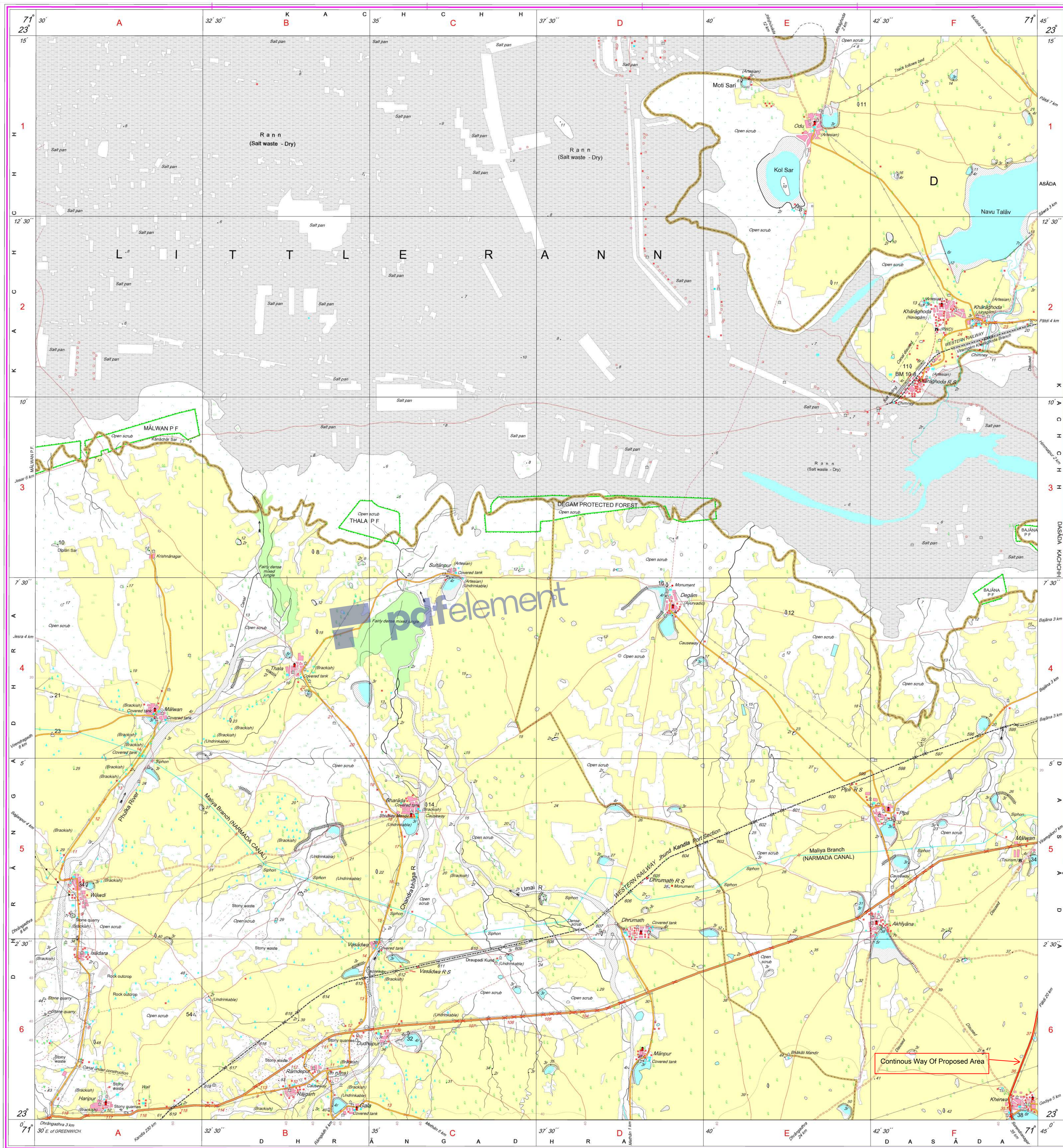
Gandhinagar.

Fax : 079 - 23240451/452

WEBSITE : www.surveyofindia.gov.in

Reproduction in whole or part by any means is prohibited without the written permission of Survey of India, the National Mapping Agency.

GOVERNMENT OF INDIA COPYRIGHT, 2009.



REG. No. : -SPG D/9 (GD&D GDC-1:50,000)-

भारत के सर्वेक्षण के प्रिंटिंग में प्रकाशित,
Published under the direction of Surveyor General of India,
Survey of India, Hattibarkala Estate, Post Box No.37, Dehra Dun-248001 (Uttarakhand)
Department of Science & Technology, Government of India.

PRINTED AT THE SOUTHERN PRINTING GROUP OF SURVEY OF INDIA.

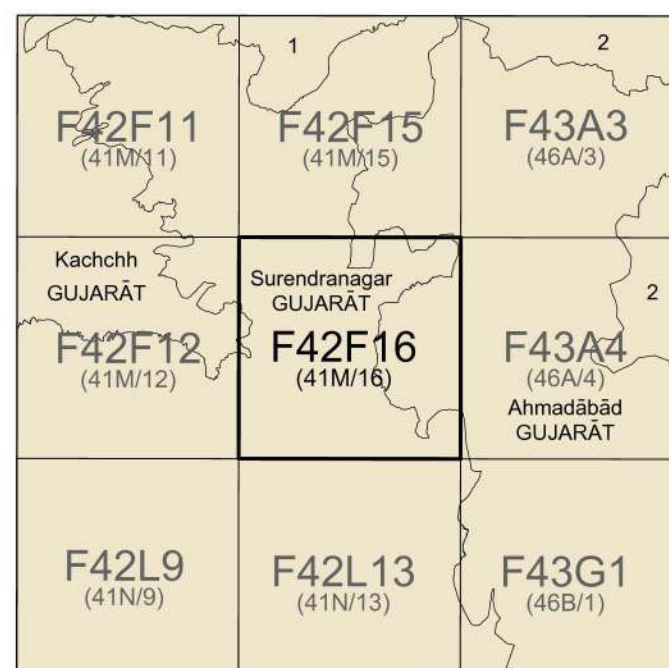


नियत के लिए नहीं NOT FOR EXPORT

OPEN SERIES
MAP

No. F42F16

Scale 1:50,000



1. Pātan, GUJARAT
2. Mehāna, GUJARAT

भारतीय सर्वेक्षण विभाग

SURVEY OF INDIA

1st Edition 2009.

Price : Rs. 50/-

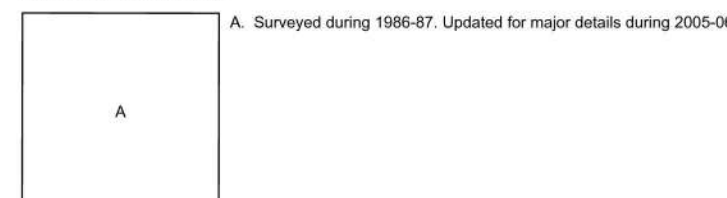
CONVENTIONAL SYMBOLS

Express highway: with toll; with bridge; with distance stone
Roads, metalled: according to importance
Roads, double carriageway: according to importance
Unmetalled road: Cart-track; Pack-track with pass; Foot path
Streams: with track in bed; undefined; Canal
Dams: masonry or rock-filled; earthwork; Weir
River: dry with water channel; with island & rocks; Tidal river
Submerged rocks; Shoal; Swamp; Reeds
Wells: lined; unlined; Tube-well; Spring; Tank; permanent; dry
Embankments: road or rail; tank; Broken ground
Railways: broad gauge; double; single with station; under construction
Railways: other gauges: double; single with distance stone; do
Mineral line or tramway: Kin. Cutting with tunnel
Contours with sub-features: Rocky slopes; Cliffs
Sand features: (1) flat; (2) sand-hill; permanent; (3) dunes; shifting
Towns or Villages: inhabited; deserted; Fort
Huts: permanent; temporary; Tower; Antiquities
Temple; Chhatra; Church; Mosque; Igah; Tomb; Graves
Lighthouse; Lightship; Buoys: lighted; unlighted; Anchorage
Mine: Vine on trellis; Grass; Scrub
Palms; palmyra; other; Plantain; Conifer; Bamboo; Other trees
Areas: cultivated; wooded; Surveyed tree
Boundary: international
state; demarcated; undemarcated
district; subdivision; taluk or taluk; forest
Boundary pillars: surveyed; unlocated
Heights: triangulated; station; point; approximate
Bench-mark: geodetic; tertiary; canal
Post office; Telegraph office; Overhead tank
Rest house or inspection bungalow; Circuit house; Police station
Camping ground: Forest: reserved; protected
Spaced names: administrative; locality or tribal
Hospital; Dispensary; Veterinary; Hospital / Dispensary
Aerodrome; Helipad; Tourist site
Power line: with pylons surveyed; with poles unsurveyed

NOTES

Heights are in metres and above Indian mean sea level.
Contours are approximate.
A relative height, h , represents the approximate height, in metres, between the top and bottom of a steep slope.
The area of Kachchh District falling in this sheet is not included in any taluk.
Cart-tracks in this sheet against which there is no descriptive remarks are generally jeepable.
Tanks, shown dry in this area usually contain water from July to March.

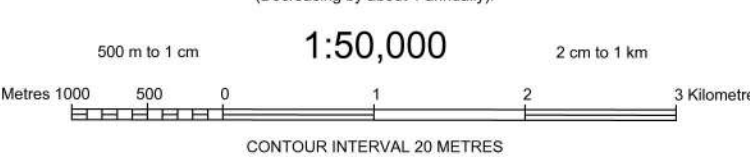
COMPILATION INDEX



Projection - UTM Datum - WGS 84

Magnetic Variation from True North about $\frac{1}{4}^{\circ}$ West in 2005.
(Decreasing by about $\frac{1}{4}^{\circ}$ annually).

1:50,000



For further details about this map, please contact

Director

Gujarat, Daman & Diu Geo-Spatial Data Centre

Survey of India, Sector-10(A)

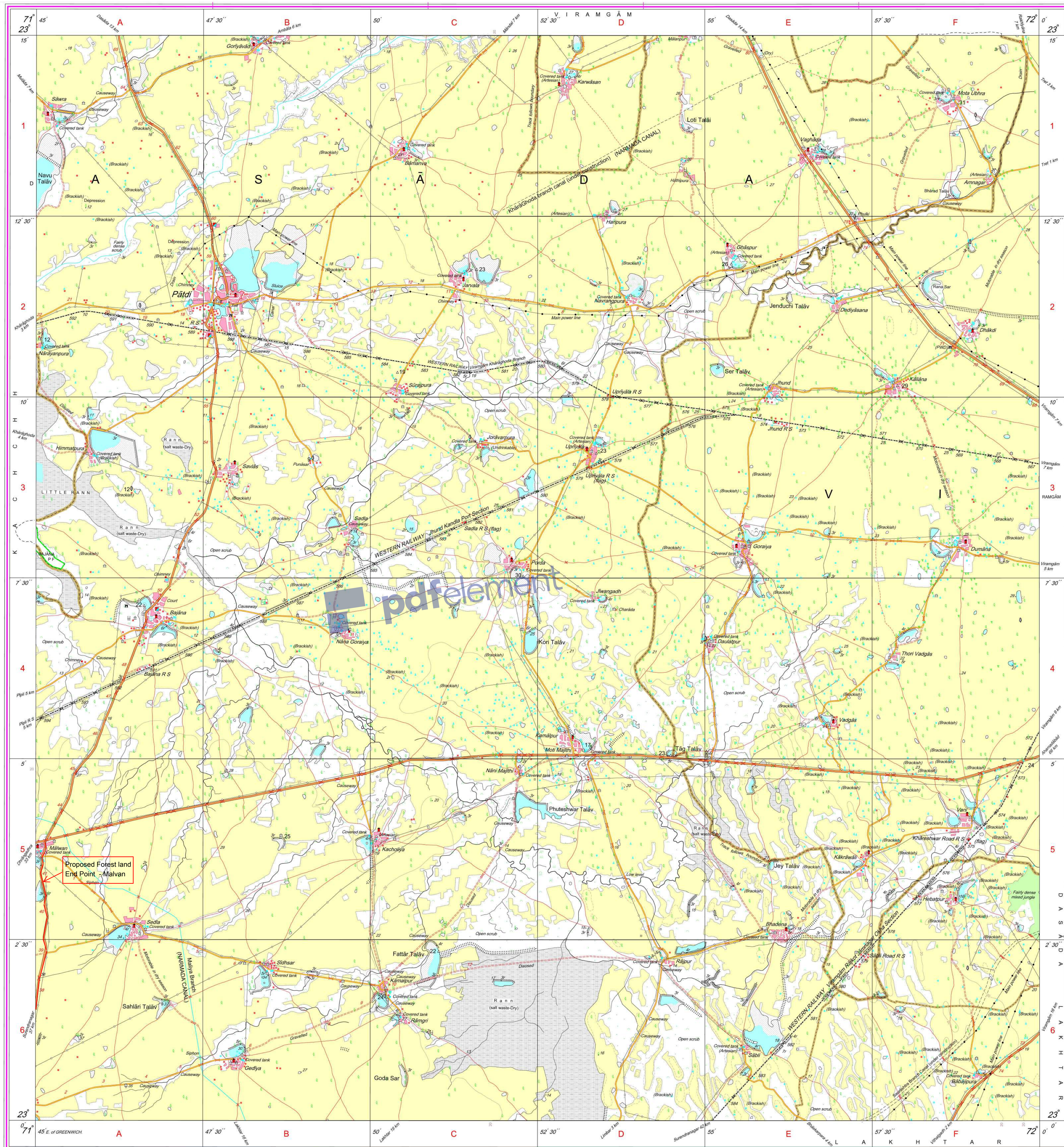
Gandhinagar,

Fax : 079 - 2324045/1452

WEBSITE - www.surveyofindia.gov.in

Reproduction in whole or part by any means is prohibited
without the written permission of Survey of India, the
National Mapping Agency.

GOVERNMENT OF INDIA COPYRIGHT, 2009.



REG. No. -SPG D706 (GSD GDC 1:50,000)

भारत के सर्वेक्षण के निदेशन में प्रकाशित,
Published under the direction of Surveyor General of India,
Survey of India, Haidibarkala Estate, Post Box No.37, Dehra Dun-248001 (Uttarakhand)
Department of Science & Technology, Government of India.

PRINTED AT THE SOUTHERN PRINTING GROUP OF SURVEY OF INDIA.