

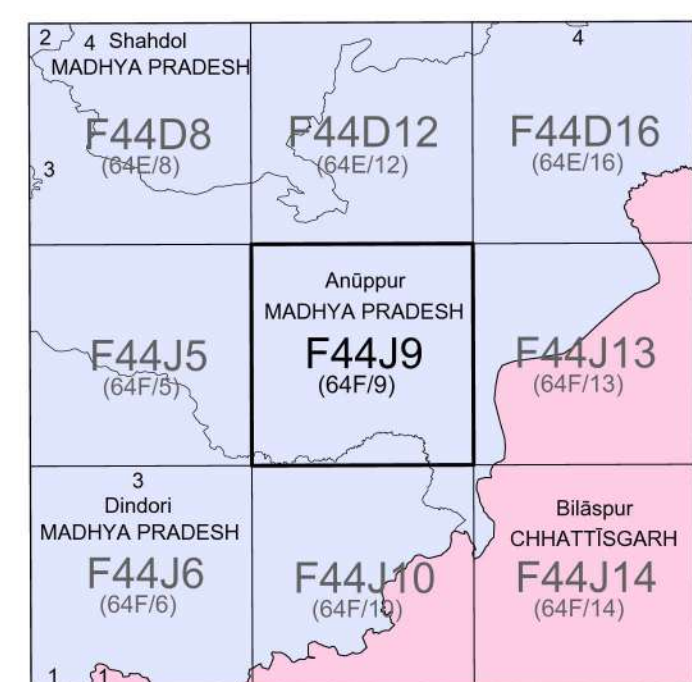


निर्वात के लिए नहीं NOT FOR EXPORT

OPEN SERIES MAP

No. F44J9

Scale 1:50,000



भारतीय सर्वेक्षण विभाग SURVEY OF INDIA

1st Edition 2010.

Price: Rs. 70/-

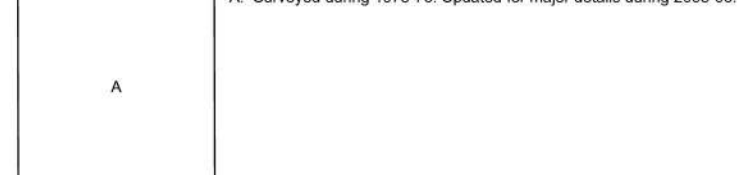
CONVENTIONAL SYMBOLS

- Express highway: with toll; with bridge; with distance stone
Roads, metalled according to importance
Roads, double carriageway according to importance
Unmetalled road: Cart-track, Push-track with path, Foot-path
Streams: with track in bed, undefined, Canal
Dams: masonry or rock-filled, earthen, Weir
River: dry with water channel, with island & rocks, Tidal river...
Submerged rocks: Shoal, Swamp, Reeds
Wells: lined, unlined, Tube-well, Spring, Tanks: perennial, dry
Embankments: road or rail, track, Broken ground
Railways, broad gauge: double, single with station, under constn.
Railways, other gauge: double, single with distance stone, do
Mineral line or tramway, Kin. Cutting with tunnel
Contours with sub-features: Rocky slopes, Cliffs
Sand features (1:flat, 2:shard-ridge/permanent), (3:kunes/ohhling)
Towns or Villages: inhabited, deserted, Fort
Hubs: permanent, temporary, Tower, Antenna
Temples: Chhatra, Chhatra, Mosque, Temple, Tomb, Graves
Lighthouse, Lightship, Buoy: lighted, unlighted, Anchorage
Mine: Vise on balls, Grass, Scrub
Palms: palmys, other, Plantain, Conifer, Bamboo, Other trees
Areas: cultivated, wooded, Surveyed tree
Boundary, international
state demarcated, undemarcated
district, subdivision, taluk or taluk forest
Boundary pillars: surveyed, unlocated
Heights, triangulated station, point, approximate
Bench-mark: geodetic, tertiary, canal
Post office, Telegraph office, Overhead tank
Rest house or inspection bungalow, Circuit house, Police station
Camping ground, Forest reserved, protected
Special names: administrative, locality or tribal
Hospital, Dispensary, Veterinary Hospital/ Dispensary
Aerodrome, Helipad, Tourist site
Power line: with pylons surveyed, with poles unsurveyed

NOTES

- Heights are in metres and above Indian mean sea level.
Contours are approximate.
A relative height, e.g., 100, represents the approximate height, in metres, between the top and bottom of a steep slope.

COMPILATION INDEX



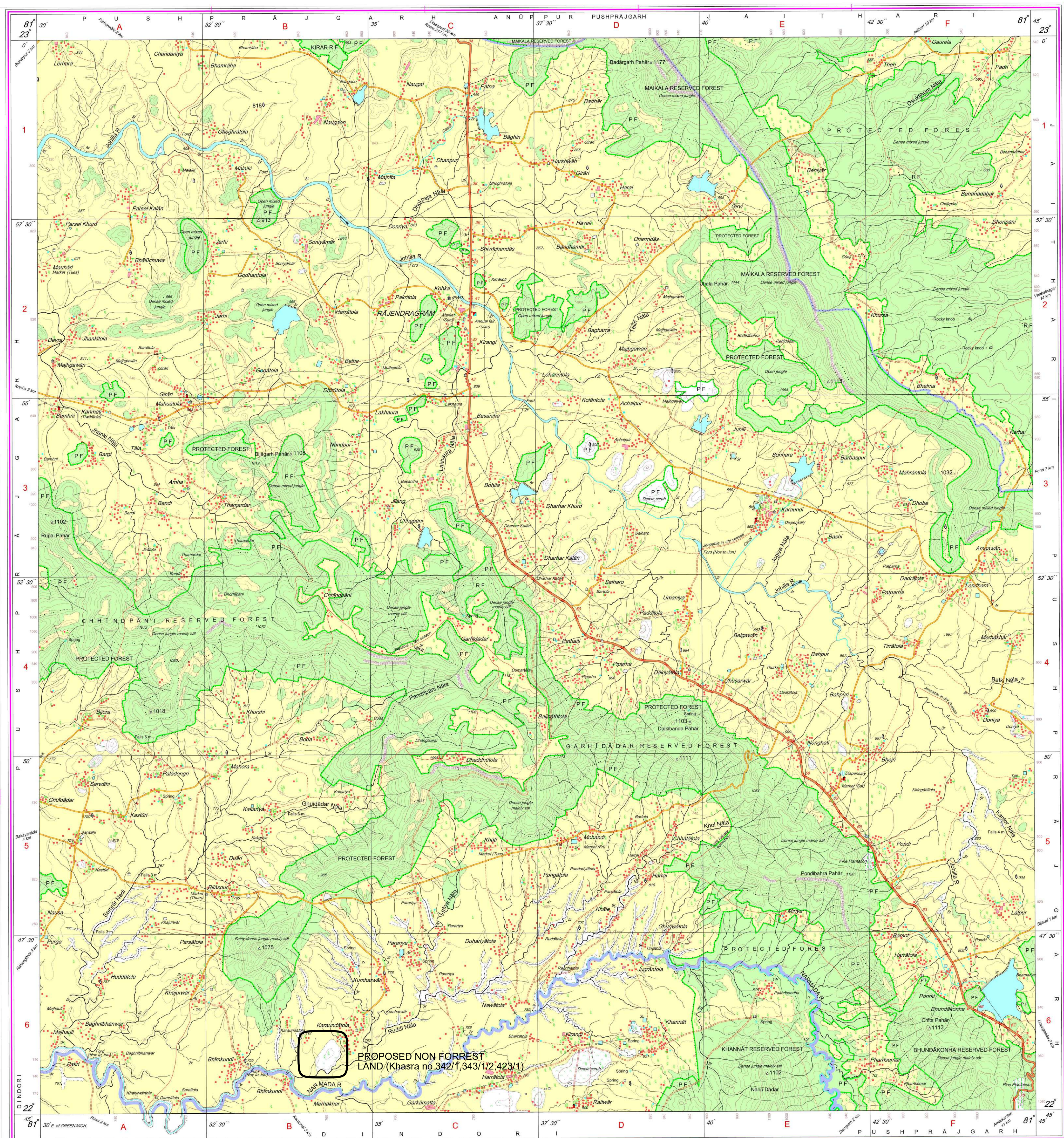
Projection - UTM Datum - WGS 84
Magnetic Variation from True North about 1 West in 2005.
(Decreasing to about 1' annually)
Scale 1:50,000
500 m to 1 cm, 2 cm to 1 km
CONTOUR INTERVAL 20 METRES

For further details about this map, please contact
Director, Madhya Pradesh Geo-Spatial Data Centre, Survey of India, Survey Colony, Vijaynagar, Jabalpur.

WEBSITE - www.surveyofindia.gov.in

Reproduction in whole or part by any means is prohibited without the written permission of Survey of India, the National Mapping Agency.

GOVERNMENT OF INDIA COPYRIGHT, 2010.



REG. No. - SPQ D'10 (Madhya Pradesh GSD-1/50-2009)
भारत के सर्वेक्षण के निदेश में प्रकाशित, Published under the direction of Surveyor General of India, Survey of India, Hattibarkala Estate, Post Box No.37, Dehra Dūn-248001 (Uttarakhand), Department of Science & Technology, Government of India.
PRINTED AT THE SOUTHERN PRINTING GROUP OF SURVEY OF INDIA.



निर्वाण के लिए नहीं NOT FOR EXPORT

OPEN SERIES MAP

No. F44J14

Scale 1:50,000

Anuppur MADHYA PRADESH F44J9 (64F/9)	F44J13 (64F/13)	F44K1 (64J/1)
Dindori MADHYA PRADESH F44J10 (64F/10)	F44J14 (64F/14) Bilaspur CHHATTISGARH	F44K2 (64J/2)
F44J11 (64F/11)	F44J15 (64F/15)	F44K3 (64J/3)

- 1 Kawardha, CHHATTISGARH.
- 2 Koreia, CHHATTISGARH.
- 3 Korba, CHHATTISGARH.

भारतीय सर्वेक्षण विभाग SURVEY OF INDIA

1st Edition 2010. Price : Rs. 70/-

CONVENTIONAL SYMBOLS

- Express highway: with toll, with bridge, with distance stone.
- Roads, metalled: according to importance.
- Roads, double cartway: according to importance.
- Unmetalled road: Cart-track: Pack-track with pass. Foot-path.
- Streams: with track in bed, undefined. Canal.
- Dams: masonry or rock-filled, earthwork. Weir.
- River: dry with water channel, with island & rocks. Tidal river.
- Submerged rocks. Shoal. Swamp. Reeds.
- Walls: lined, unlined. Tube-well. Spring. Tanks: perennial, dry.
- Equipments: road or rail, tank. Broken ground.
- Railways, broad gauge: double, single with station under canopy.
- Railways, other gauges: double, single with distance stone, etc.
- Mineral line or tramway. Kin. Cutting with tunnel.
- Contours with sub-features. Rocky slopes. Cliffs.
- Sand features (1 flat, 2 sand-hills/permanent), (3)unes/puffing).
- Towns or Villages: inhabited, deserted. Fort.
- Huts: permanent, temporary. Tower. Antiquities.
- Temples. Chhatri. Church. Mosque. Gôph. Tomb. Graves.
- Lighthouse. Lightship. Buoys: lighted, unlighted. Anchorage.
- Mine. Vine on trellis. Grass. Scrub.
- Palms: palmyra; other. Plantain. Conifer. Bamboo. Other trees.
- Areas: cultivated, wooded. Surveyed tree.
- Boundary, international:
 - state demarcated, undemarcated.
 - district subdivision (tribal or block, forest).
- Boundary pillars: surveyed, uncollected.
- Heights, triangulated: station, point, approximate.
- Benchmark: geodetic, tertiary, canal.
- Post office, Telegraph office, Overhead tank.
- Rest house or inspection bungalow. Circuit house. Police station.
- Camping ground, Forest: reserved, protected.
- Spaced names: administrative, locality or tribal.
- Hospital. Dispensary, Veterinary; Hospital/Dispensary.
- Aerodrome. Helipad. Tourist site.
- Power line: with pylons surveyed, with poles unsurveyed.

REFERENCE

PRD Public Works Department.

NOTES

- Heights are in metres and above Indian mean sea level.
- Contours are approximate.
- A mean height, e.g., 50, represents the approximate height, in metres, between the top and bottom of a steep slope.
- The triangulated heights and contours in this sheet have not been adjusted to the heights of the spirit-levelled bench-marks and may not be strictly in accordance with them.
- The exterior boundaries of areas of Reserved or Protected forests are shown by green ribands.

COMPILATION INDEX

A. Surveyed during 1976-77. Updated for major details during 2005-06.



Projection - UTM Datum - WGS 84

Magnetic Variation from True North about 1° West in 2005.

(Decreasing by about 1' annually.)

Scale 1:50,000

CONTOUR INTERVAL 20 METRES

For further details about this map please contact

Director

Chhattisgarh Geo-Spatial Data Centre

Survey of India, Pachpedi Naka

Raipur.

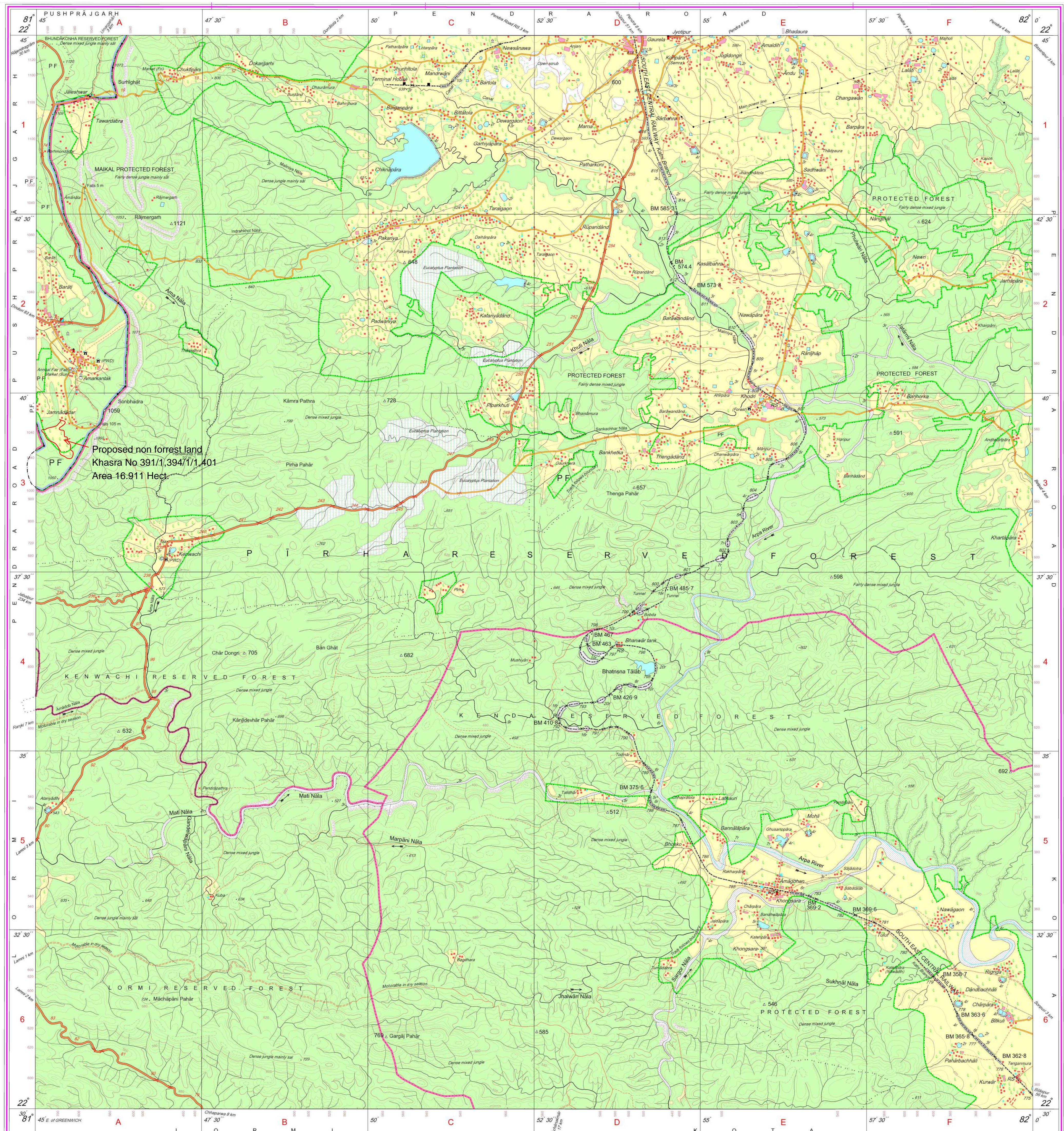
WEBSITE - www.surveyofindia.gov.in

Reproduction in whole or part by any means is prohibited

without the written permission of Survey of India, the

National Mapping Agency.

GOVERNMENT OF INDIA COPYRIGHT, 2010.



REG. No. -SPG D10 (Chhattisgarh QDC-1:50,000)-

भारत के महानदीयक सर्वेक्षण विभाग, राँची, के निर्देशन में प्रकाशित.
Published under the direction of Swarna Subba Rao, B.E., Surveyor General of India,
Survey of India, Hattibarkala Estate, Post Box No.37, Dehra Dun-248001 (Uttarakhand),
Department of Science & Technology, Government of India.

PRINTED AT THE SOUTHERN PRINTING GROUP OF SURVEY OF INDIA.

