



No. F42L11
Scale 1:50,000

F42L6 (41N/6)	F42L10 (41N/10)	F42L14 (41N/14)
F42L7 (41N/7)	F42L11 (41N/11)	F42L15 (41N/15)
F42L8 (41N/8)	F42L12 (41N/12)	F42L16 (41N/16)

1 Amreli, GUJARAT.

भारतीय सर्वेक्षण विभाग SURVEY OF INDIA

1st Edition 2011.

Price : Rs. 70/-

CONVENTIONAL SYMBOLS

- Express highway: with toll; with bridge; with distance stone
- Roads, metalled: according to importance
- Roads, double cartage-way: according to importance
- Unmetalled road: Cart-track: Pack-track with pass: Foot path
- Streams: with track in bed: undefined: Canal
- Dams: masonry or rock-filled: earthwork: Weir
- River: dry with water channel; with island & rocks: Tidal river
- Submerged rocks: Shoal: Swamp: Reeds
- Wells: lined: unlined: Tube-well: Spring: Tanks: perennial: dry
- Embankments: road or rail: tank: Broken ground
- Railways: broad gauge: double: single with station: under constr.
- Railways: other gauges: double: single with distance stone; do.
- Mineral line or tramway: Kin. Cutting with tunnel
- Contours with sub-features: Rocky slopes: Cliffs
- Sand features: (1) flat: (2) sand-hill(permanent): (3) dunes(shifting)
- Towns or Villages: inhabited: deserted: Fort
- Huts: permanent: temporary: Tower: Antiquities
- Temple: Chhatra: Church: Mosque: Igah: Tomb: Graves
- Lighthouse: Lightship: Buoy: Lighted: unlighted: Anchorage
- Mine: Vine on trellis: Grass: Scrub
- Palms: palmyra: other: Plantain: Conifer: Bamboo: Other trees
- Areas: cultivated: wooded: Surveyed tree
- Boundary: international
- district: subdivision: taluk or thika: forest
- Boundary pillars: surveyed: unlocated
- Heights: triangulated: station: point: approximate
- Bench-mark: geodetic: tertiary: canal
- Post office: Telegraph office: Overhead tank
- Rest house or inspection bungalow: Circuit house: Police station
- Camping ground: Forest: reserved: protected
- Spaced names: administrative: locality or tribal
- Hospital: Dispensary: Veterinary Hospital / Dispensary
- Aerodrome: Helipad: Tourist site
- Power line: with pylons surveyed; with poles unsurveyed

Proposed Ca Area

NOTES :-

- Heights and contours are in metres.
- Contours are approximate.
- Unmetalled roads in this sheet are generally motorable in dry season.
- Tanks, shown dry in this area usually contain water from July to December.
- Cultivation is periodic and dependent on rainfall.

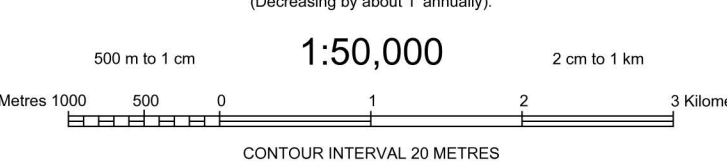
COMPILATION INDEX

- A. Surveyed during 1966-67. Updated for major details from 1:25,000 survey, 2001-02.



Projection - UTM Datum - WGS 84

Magnetic Variation from True North about 1/2° West in 2005.
(Decreasing by about 1° annually).



CONTOUR INTERVAL 20 METRES

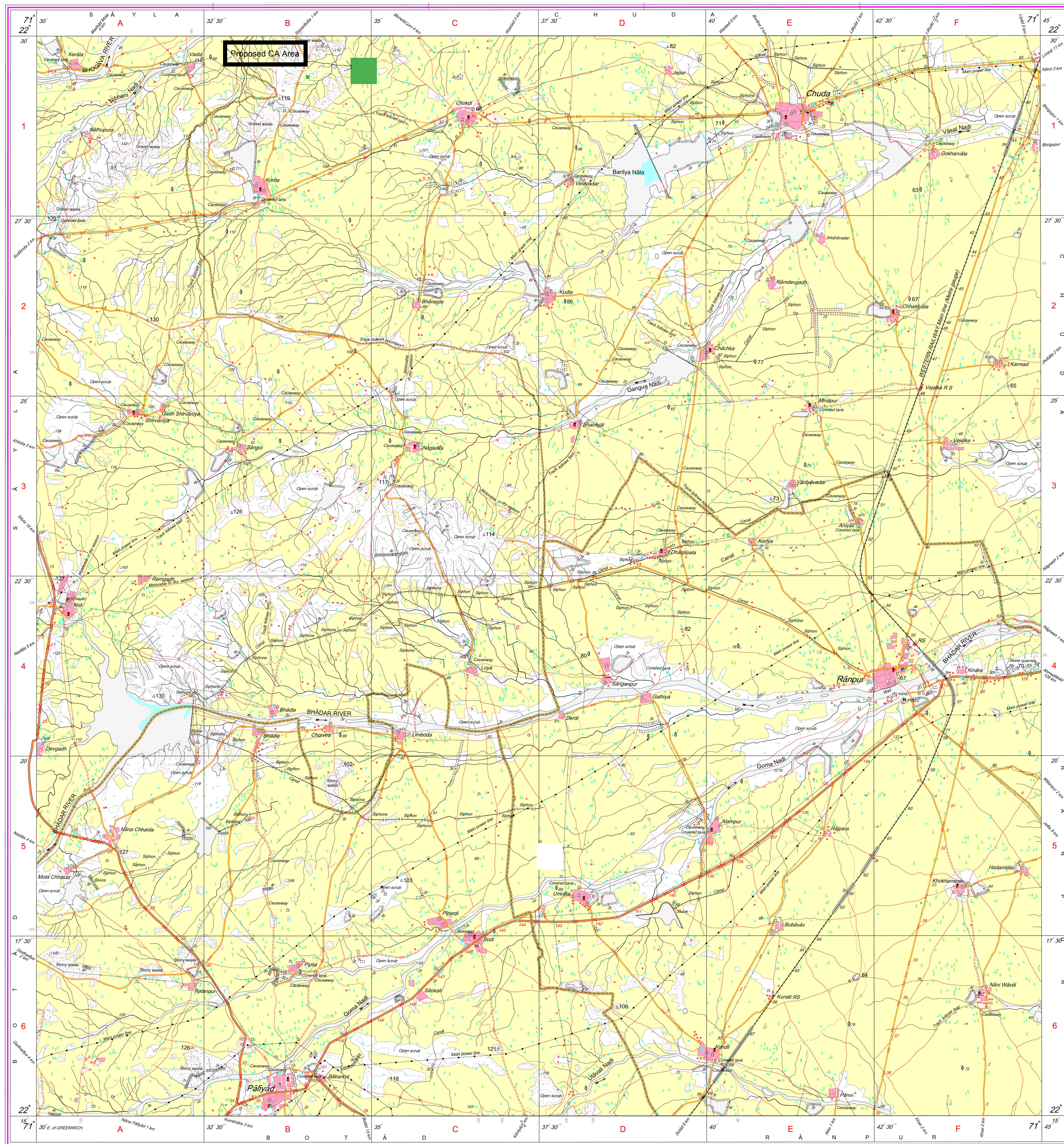
For further details about this map, please contact

Director
Gujarat, Damam & Dis Geo-Spatial Data Centre
Survey of India, Sector
10-A
Gandhinagar.

WEBSITE - www.surveyofindia.gov.in

Reproduction in whole or part by any means is prohibited
without the written permission of Survey of India, the
National Mapping Agency.

GOVERNMENT OF INDIA COPYRIGHT, 2011.



REG. No.

-SPG D11 (SDD GDC-150,000)-

भारत में सर्वेक्षण, सर्वेक्षण, सर्वेक्षण, सर्वेक्षण में प्रयोग,
Published under the direction of Swarna Subba Rao, B.E., Surveyor General of India,
Survey of India, Hattibarkala Estate, Post Box No. 37, Dehra Dun-248001 (Uttarakhand)
Department of Science & Technology, Government of India.

PRINTED AT THE SOUTHERN PRINTING GROUP OF SURVEY OF INDIA.

Nr

(N.J.Parmar)
Dy. Conservator of Forest
Surendranagar