

निर्गत के लिए नहीं NOT FOR EXPORT

# BIHAR

FIRST EDITION

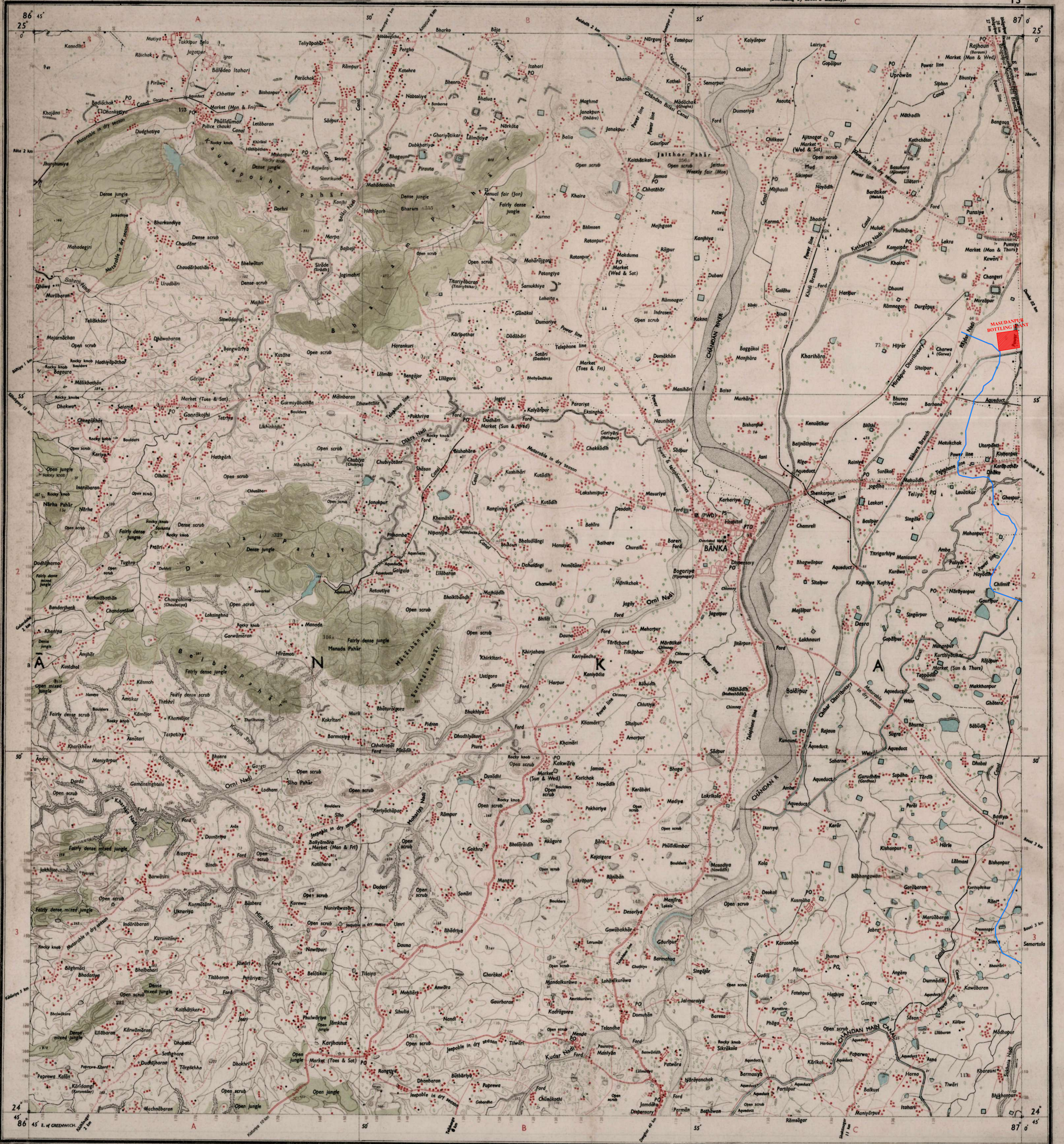
भारत INDIA  
REFER TO THIS MAP AS : I:50,000  
SHEET 72 L/13 FIRST EDITION

BHAGALPUR DISTRICT.

Surveyed 1976-77.

Magnetic Variation from True North about 4° West in 1975.  
(Decreasing by about 2' annually).

No. 72  $\frac{1}{13}$



Reg. No. 4690 D/80 (S. C. 2-1333) 700 B-1006 97-3516 2000.

Roads: metalled, according to importance; distance stone unsmetalled, do do bridge.

Canals: main, push-track and open; foot-path with bridge; bridges with gate without; Causeway, Ford or Ferry.

Streams: with track in bed; unforded; Canal.

Dams: masonry or rock-filled; earthwork; Weir.

River: 300m; shalving; steep; 3 to 6 metres; over 6 metres; dry with water channel; with island & rocks; tidal; silted; navigable; shoal; swamp; head.

Wells: hand-dug; tubewell; well; spring; tank; perennial; dry; Enchanted; near or far; tank; brick; ground.

Railways: broad gauge; double; single; with station; with; other gauges; do do; with distance stone; do do.

Contours: with spot heights; Tropic; with contour; with tunnel; Contours with spot heights; Slopes; Cliffs.

Sand: Reservoirs of sand; Dams; and dams; and dams; and dams.

Index to Sheets

72 1/2	72 3/4	73 0
72 1/4	72 1/2	72 3/4
72 1/8	72 1/4	72 1/2

500 m to 1 cm  
Metres 1000 500 0 500 1000  
Kilometres 2 1 0 1 2

HEIGHTS & CONTOURS IN METRES  
CONTOUR INTERVAL 10 METRES

Water features are shown in blue where they generally contain water. Contour lines are shown in brown. The exterior boundary of areas of Reserved or Protected forests are shown in green. Rivers are shown in blue.

Contours are approximate. A red contour height, or a brown contour height, in metres, between the top and bottom of a steep slope. Wooded areas are coloured green. Scattered trees and other vegetation are in green, but prominent surveyed trees are in black.

Not applicable.

भारत के नक्शों का प्रकाशन भारत सरकार के सर्वेक्षण विभाग द्वारा किया जाता है।

Published under the direction of Major General Kishor Lal Khosla, Surveyor General of India, 1980.

Administrative Index

BHAGALPUR

Towns or Villages: inhabited; deserted; Fort. Hindu permanent; temporary; Tower; Anicut; Temple; Chhatra; Church; Mosque; Light; Tomb; Graves. Lighthouse; Lightship; Buoy; Signal; unlighted; Anchorage. Mine. Fire on trails; Grass; Scrub. Palm; gaur; other; Park; tea; Coffee; Bamboo; Oil; trees. Boundary: international. state demarcated; un-demarcated. district; sub-division; taluk; or taluk; forest. Boundary pillars surveyed; un-surveyed; village; triangulation. Height; trigonometrical station; permanent; approximate. BM 63 3 BM 63 33. Post office; Telegraph office; Combined office; Police station; PO; TO; PTO; PS. Burial ground; dak; or traveller; inspection; Post-house. DG; B; C; BH; Forest. Circuit house; Camping ground; Forest; reserved; protected. CH; CG; R; P; P. Spaced names: administrative; locality; or tribal. KIKRI; NAGA.

REFER TO THIS MAP AS : I:50,000  
SHEET 72 L/13 FIRST EDITION

INDIA भारत

REFERENCES  
E.R. Eastern Railway. P.W.D. Public Works Department.

LEGEND:

Description	Symbol
Proposed LPG Pipeline	
District Boundary	

INDIAN OIL CORPORATION LIMITED  
NOIDA

PROJECT: DETAILED ENGINEERING SURVEY, SOIL SURVEY, CADASTRAL SURVEY FOR PARADUR-HALDIA-BURGHANUR LPG PIPELINE & ITS EXTENSION UP TO PATNA AND MUZAFFARPUR (PLC/PHDPL/AUG/ICL/1522)

TITLE: PIPE LINE ROUTE MAP (TOPOGRAPHIC MAP)  
SECTION: BANKA DISTRICT-BIHAR

JOB No. 24552510  
SURVEY AGENCY: WAPCOS LIMITED  
76-C, INSTITUTIONAL AREA,  
SECTOR-18, GURGAON HARYANA-122015  
DWG. No. REV. 0

SCALE: SHEET NO. 3 OF 3  
1:50,000 IOCL-PHDPL-AUG/ICL-FRI-2

GOVERNMENT OF INDIA COPYRIGHT, 1980.  
Price: Twenty Rupees.