

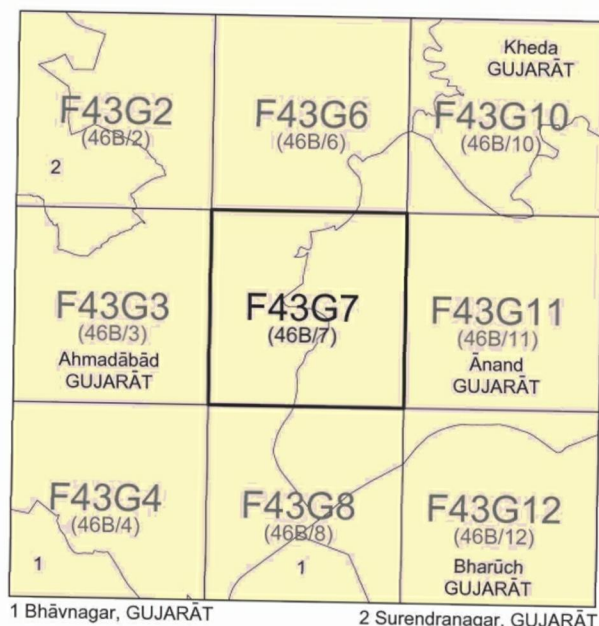


निर्वात के लिए नहीं NOT FOR EXPORT

OPEN SERIES  
MAP

No. F43G7

Scale 1:50,000



भारतीय सर्वेक्षण विभाग

SURVEY OF INDIA

1st Edition 2011.

Price : Rs. 70/-

#### CONVENTIONAL SYMBOLS

Express highway with toll, with bridge, with distance stone	
Roads, metalled, according to importance	
Roads, double cartway, according to importance	
Unmetalled road, Cart-track, Pack-track with pass, Foot-path	
Streams: with track in bed, unfilled, Canal	
Dam: masonry or rock-filled, earthwork, Weir	
River: dry with water channel, with island & rocks, Tidal river	
Submerged rocks, Shoal, Swamp, Reeds	
Wells: hand, unlined, Tube-well, Spring, Tanks: permanent, dry	
Embarkment: road or rail, line, broken ground	
Railways, broad gauge: double, single with station, under construction	
Railways, other gauges: double, single with distance stone, do	
Mineral line or tramway, Kin. Cutting with tunnel	
Contours with sub-features, Rocky slopes, Cliffs	
Sand features (1 flat, 2 sand-hills permanent), (3 dunes shifting)	
Towns or Villages: inhabited, deserted, Fort	
Hulk, permanent, temporary, Tower, Antiquities, Graves	
Temple, Chhatra, Church, Mosque, Jagan, Tomb, Groves	
Lighthouse, Lightship, Buoy, lighted, unlighted, Anchorage	
Mine: Vine on trellis, Grass, Scrub	
Palms: palmyrs, other, Plantain, Conifer, Bamboo, Other trees	
Areas: cultivated, wooded, Surveyed tree	
Boundary: international	
state, demarcated, undemarcated	
district, subdivision, taluk or Bhalu, forest	
Boundary pillar: surveyed, unsurveyed	
Heights, triangulated station, point, approximate	
Bench-mark: geodetic, tertiary, canal	
Post office, Overhead tank	
Rest house or inspection bungalow, Circuit house, Police station	
Camping ground, Forest: reserved, protected	
Spaced names: administrative, locality or tribal	
Hospital, Dispensary, Veterinary Hospital / Dispensary	
Air-station, Helipad, Tourist site	
Power line: with pylons surveyed, with poles unsurveyed	

#### NOTES :-

Heights and contours have not been shown.  
A relative height, e.g., 10 represents the approximate height, in metres between the top and bottom of a tank, shown dry in the area usually contains water from July to February.  
Cultivation is periodic and dependent on rainfall.

#### COMPILED INDEX

- A. Surveyed during 1966-67 Updated for major details from 1:25,000 survey, 1966-69 and 2002-03.  
B. Surveyed during 1966-67 Updated for major details from 1:25,000 survey, 1966-69.

Projection - UTM Datum - WGS 84

Magnetic Variation from True North about  $\frac{1}{2}$ ° West in 2005.  
(Decreasing by about 1° annually.)

1:50,000

Metres 1000 500 0 2 3 Kilometres

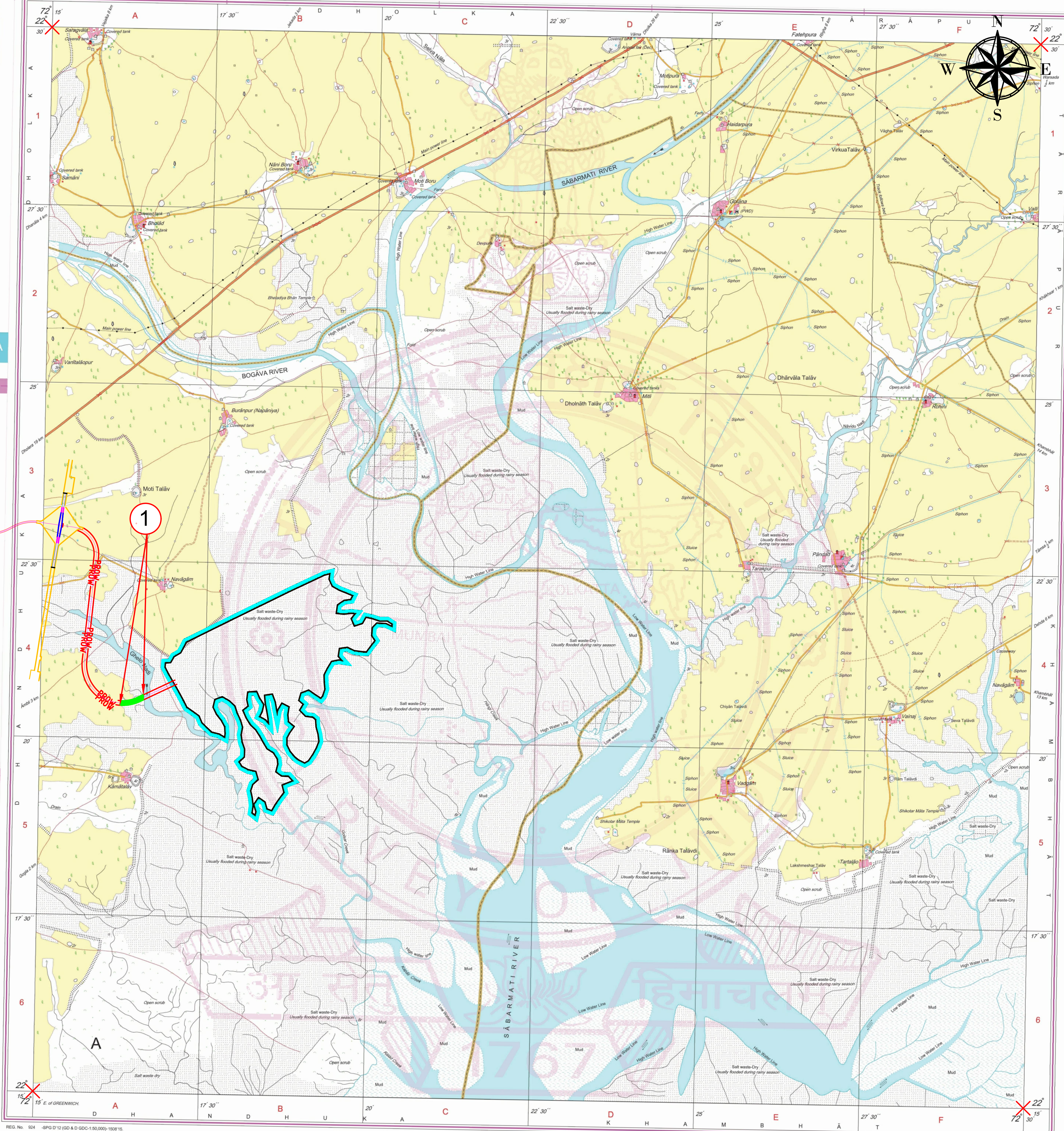
For further details about this map, please contact

Director  
Gujarat, Damán & Diu Geo-Spatial Data Centre  
Survey of India, Sector 10(A)  
Gandhinagar.

WEBSITE - [www.surveyofindia.gov.in](http://www.surveyofindia.gov.in)

Reproduction in whole or part by any means is prohibited  
without the written permission of Survey of India, the  
National Mapping Agency.

GOVERNMENT OF INDIA COPYRIGHT, 2011.



## FOREST CLEARANCE PROPOSAL-TOPO MAP

DIVERSION AREA -7.53 HA.

Sr. No.	Village	Side	Old Survey No.	Latitude	Longitude
1	Kamatalav	Both	13P	72.27023353	22.34117181
				72.27061571	22.34097966
				72.27131396	22.34100046
				72.27171132	22.34102521
				72.27229228	22.34108916
				72.27279512	22.34117887
				72.27341365	22.34130664
				72.27398299	22.34146968
				72.27484088	22.34176396
				72.27613003	22.34233629
				72.27606631	22.34361704
				72.27482653	22.34300004
				72.27412437	22.34268167
				72.27346913	22.34244496
				72.27287034	22.34229947
				72.27167083	22.34210775
				72.27106976	22.34207957
				72.27060414	22.34207172

## LEGEND

	CENTER LINE
	PROPOSED ROW
	FOREST BOUNDARY
	DHOLERA INTERNATIONAL AIRPORT BOUNDARY
	AHMEDABAD-DHOLERA EXPRESSWAY BOUNDARY

PROJECT : DPR OF LINK ROAD FROM AHMEDABAD-DHOLERA EXPRESSWAY TO PROPOSED DHOLERA INTERNATIONAL AIRPORT

LOCATION : DHOLERA, GUJARAT.

TITLE : FOREST TOPO MAP

DPR CONSULTANT :



GEO DESIGNS

&

RESEARCH (P) LTD.

B-10 KRISHNA IND. ESTATE, OPP. B.I.D.C  
GORWA ESTATE, VADODARA - 390 016  
TELE FAX : 91-265-2290222  
PHONE NO: 2283081,2282305  
E-MAIL : [survey@geogroup.in](mailto:survey@geogroup.in)

DRG. NO. GDR/DHOLERA/205/RP/TOPO