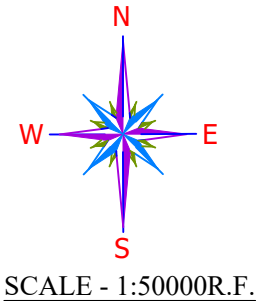
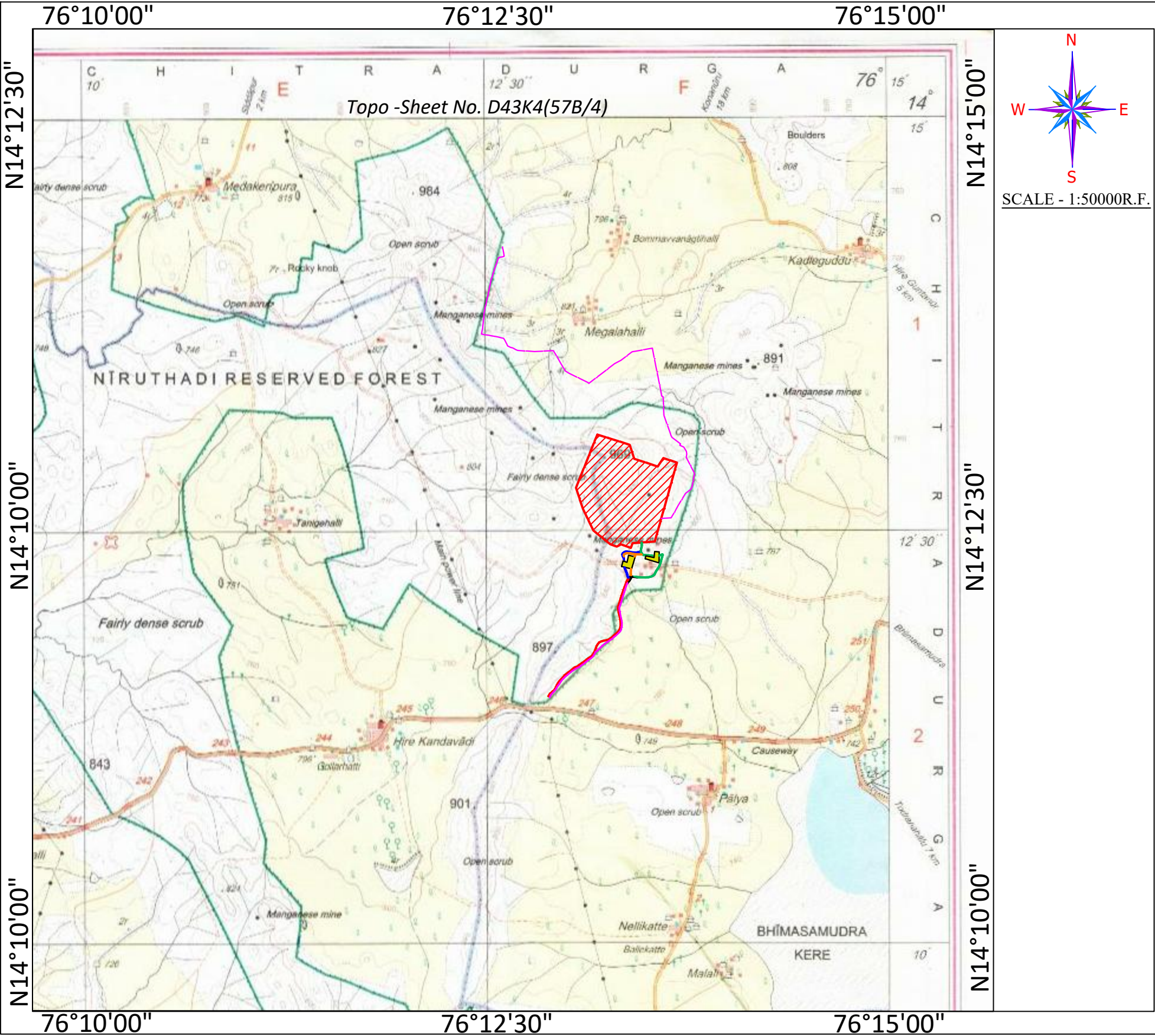


TOPO MAP SHOWING THE FOREST LAND PROPOSED FOR MINING, APPROACH ROADS, STATUTORY BUILDINGS AND WATER PIPE LINE ETC. PROPOSED FOR BHOMMAN IRON ORE MINE OF M/s. JSW STEEL LTD.(ERSTWHILE LESSEE M/s. MINERAL ENTERPRISES LIMITED, ML NO.2346) OVER AN EXTENT OF **100.282Ha.** (MINING LEASE -93.60HA, ALLIED ACTIVITIES-6.682Ha.) IN NIRUTHADI RESERVE FOREST, HOLALKERE RANGE OF CHITHRADURGA & HOLALKERE TALUK, CHITRADURGA DISTRICT/DIVISION, KARNATAKA STATE.



INDEX	
CONVENTIONAL SYMBOLS	
Express highway: with toll; with bridge; with distance stone	
Roads, metalled; according to importance	
Roads, double carriageway; according to importance	
Unmetalled road. Cart-track. Pack-track with pass. Foot-path	
Streams: with track in bed; undefined. Canal	
Dams: masonry or rock-filled; earthwork. Weir	
River: dry with water channel; with island & rocks. Tidal river	
Submerged rocks. Shoal. Swamp. Reeds	
Wells: lined; unlined. Tube-well. Spring. Tanks: perennial; dry	
Embankments: road or rail; tank. Broken ground	
Railways, broad gauge: double; single with station; under constrn	
Railways, other gauges: double; single with distance stone; do	
Mineral line or tramway. Kin. Cutting with tunnel	
Contours with sub-features. Rocky slopes. Cliffs	
Sand features: (1) flat. (2) sand-hills(permanent). (3) dunes(shifting)	
Towns or Villages: inhabited; deserted. Fort	
Huts: permanent; temporary. Tower. Antiquities	
Temple. Chhatra. Church. Mosque. Idgah. Tomb. Graves	
Lighthouse. Lightship. Buoys: lighted; unlighted. Anchorage	
Mine. Vine on trellis. Grass. Scrub	
Palms: palmyra; other. Plantain. Conifer. Bamboo. Other trees	
Areas: cultivated; wooded. Surveyed tree	
Boundary, international	
state: demarcated; undemarcated	
district: subdivision; tahsil or taluk; forest	
Boundary pillars: surveyed; unlocated	
Heights, triangulated: station; point; approximate	
Bench-mark: geodetic; tertiary; canal	
Post office. Telegraph office. Overhead tank	
Rest house or inspection bungalow. Circuit house. Police station	
Camping ground. Forest: reserved; protected	
Spaced names: administrative; locality or tribal	
Hospital. Dispensary. Veterinary Hospital / Dispensary	
Aerodrome. Helipad. Tourist site	
Power line: with pylons surveyed; with poles unsurveyed	

INDEX	
	M.L.BOUNDARY AS PER CEC-93.60 HA.
	EXISTING 11KV HT LINE (FP/KA/TRANS/42633/2019)
	FOREST BOUNDARY
	STATUTORY BUILDING-2.286HA
	ROAD-R-1:-1.728HA.
	ROAD-R-2:-0.827HA.
	ROAD-R-3:-0.935HA.
	ROAD-R-4:-0.520HA.
	ROAD-R-5:-0.386HA.
<b>TOTAL AREA APPLIED FOR FC=93.60 +2.286 +1.728+0.827+0.935+0.520+0.386=100.282HA</b>	
	ROAD IN NON FOREST LAND (R6):-0.157HA.
<b>NET AREA INVOLVED IN THE PROJECT =100.282+0.157=100.439HA.</b>	

Project Proponent  
for JSW Steel Ltd.