

KANGRA DISTRICT.
KATHUA DISTRICT.
GURDASPUR DISTRICT.

RESTRICTED

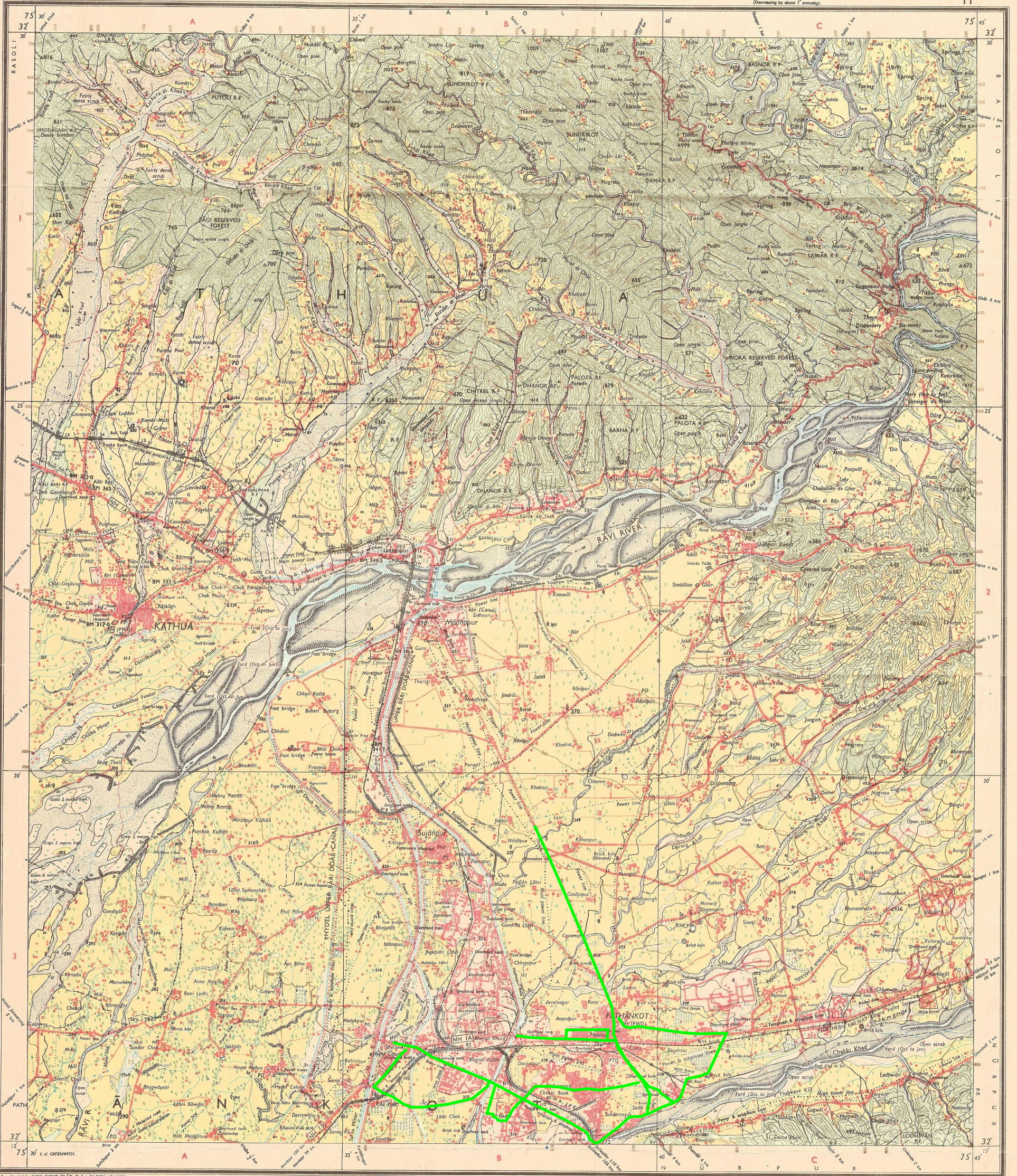
HIMACHAL PRADESH JAMMU & KASHMIR, PUNJAB

SECOND EDITION

Magnetic Variation from True North about 1° East in 1970.
(Decreasing by about 1' annually)

No. 43 P/11

Surveyed 1967-68
(Also see footnotes)

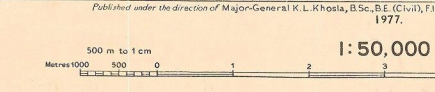


Reo. No. 6425 HD/77 (NYWC S1/O. Q. 9.1:50,000)-1511/77

Roads: metalled, according to importance; distance stone	—	25
unmetalled; do.	—	do.
Cart-track, pack-track and pass. Foot-path with bridge.	—	—
Bridges: with piers; without. Causeway, ford or ferry.	—	—
Streams with track in bed; underflow. Canal.	—	—
Dams: masonry or rock-filled; earthwork. Weir.	—	—
River banks: shelving; steep. 3 to 5 metres; over 5 metres.	—	—
dry with water channel; with island & rocks; tidal river.	—	—
Submerged rocks. Shal. Swamp. Reeds.	—	—
Wells: lined; unlined. Tube-well. Spring. Tanks: perennial; dry.	—	—
Embankments: road or rail; tank. Broken ground.	—	—
Railways: broad gauge; double; single with station; under construction.	—	—
other gauges: do. do. with station; do. do.	—	—
Lighting: railway or tramway. Telegraph line. Cutting with tunnel.	—	—
Contours with sub-features. Rocky slopes. Cliffs.	—	—
Sand features: (1) dunes; (2) sandhills and dunes; (3) shifting dunes.	—	—

Index to Sheets

41° 45'	41° 30'	41° 15'
42° 45'	42° 30'	42° 15'
43° 45'	43° 30'	43° 15'



HEIGHTS & CONTOURS IN METRES
CONTOUR INTERVAL 20 METRES

Water features are shown in blue where they generally contain water. Cultivated areas are coloured yellow. The exterior boundaries of areas of Reserved or Protected Forests are shown by green ribbons.

Contours are approximate. A relative height, e.g., 3r, represents the approximate height, in metres, between the top and bottom of a steep slope. Wooded areas are coloured green. Scattered trees and other vegetation are in green, but prominent surveyed trees are in black.

The kilometre stone numbers along roads and railways are shown in slant type e.g., '5'; whereas milestone numbers are shown in upright type, e.g., '5'.

A relative height e.g., 3r, marked along a canal, indicates the height of the top of the canal embankment above the adjacent country.

Canal distance stones in Gurdaspur District are 1,000 feet apart and every fifth stone is shown whereas in other areas they are 1,000 metres apart and every one is shown.

The ungrated heights and contours in this sheet have not been adjusted to the heights of the spirit-levelled bench-marks and may not be strictly in accordance with them.

Permission to use unmetalled roads and cart-tracks along canals is required from the Irrigation authorities.

Tanks, shown dry, in this area usually contain water from July to March.

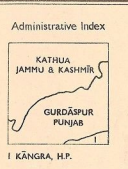
The area adjoining the Ravi River is liable to change owing to continual fluctuations in the course of the river.

This sheet has been compiled from 1:25,000 survey carried out during 1967-68 with additions and alterations based on verification survey carried out during 1972-73, on 1:50,000 scale, and 1974-75 on 1:25,000 scale.

The forest areas in this sheet are Government Reserves. Their boundaries where demarcated have been surveyed as pointed out by the local officials.

Unmetalled roads and cart-tracks in this sheet are usually motorable in dry season.

The state boundaries between Punjab and Jammu & Kashmir and Punjab and Himachal Pradesh States have been surveyed as pointed out by the local officials on the ground but have not been verified by the Punjab Government.



Towns or Villages: inhabited; deserted; Fort.	—	—
Hotel; permission; temporary; Tower; Antiquities.	—	—
Temple; Chhatra; Church; Mosque; Idgha; Tomb; Graves.	—	—
Lighthouse; Lightship; Buoy; Lighted; Unlighted; Anchorage.	—	—
Heights: triangulated; station; point; approximate.	—	200 200 200
Bench-mark: geodetic; tertiary; canal.	—	BM 63.3 BM 63.3
Post office; Telegraph office; Combined office; Police station; P.O.	—	PO 10 PO 10 PS
Bungalows: dakur; travellers; inspection; Nest-house.	—	DB 1/1 Canal 1/1 Forest
Circuit house; Camping ground; Forest; reserved; protected.	—	CH CC 1/1 1/1
Spaced names: administrative; locality or tribal.	—	KIKRI NAGA

REFER TO THIS MAP AS - I:50,000
SHEET 43 P/11 SECOND EDITION

INDIA

GOVERNMENT OF INDIA COPYRIGHT, 1977.

Price: Five Rupees.
RESTRICTED
This map is NOT to be published, copied or reproduced in part or in whole either by photography or by any other means; should be kept in safe custody and handled by authorized persons only.

REFERENCES

- NH 1A National Highway No. 1A.
- N R J P S Northern Railway Juttinder Pathankot Section.