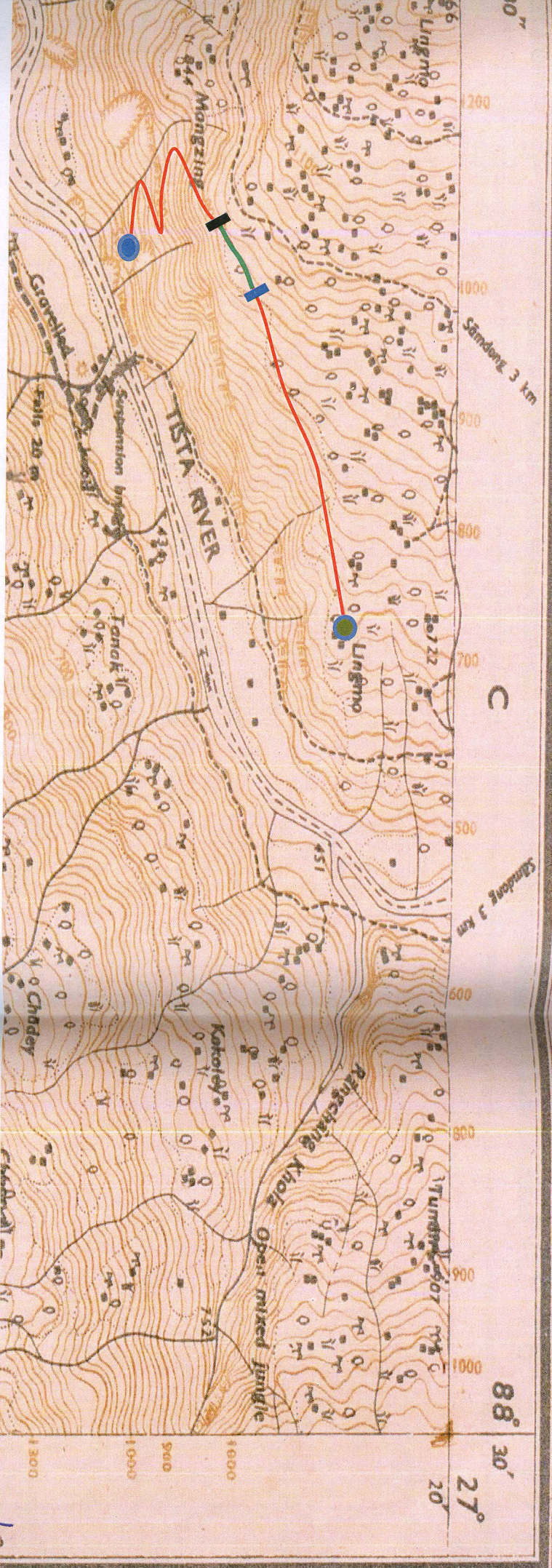


showing the proposed 3 km road from Kolthang Manaydara to Jogidara in South Sikkim

NO. 78 A/7/6



Scale 1:25000		Starting Point GPS: N27°20'2.9" and E88°28'13"
Proposed Road		Starting Point GPS: N27°19'32.6" and E88°27'47"
Proposed Road in Forest Land (Kasmal).		Ending Point GPS: N27°19'33.7" and E88°27'39.7"
Ending Point GPS N27°19'29.30" and E88°27'32.96"		Area required in Forest: 0.3440 ha

Joint Engineer
Roads & Bridges Dept
Vangang, Sub-Division
South Sikkim

Assistant Engineer
PWD Roads & Bridges
Sub-Div. Vangang
South Sikkim

Range Officer (T)
Lingmoo Range
Forest Department
Govt. of Sikkim

Divisional Forest Officer
South Territorial Division
Forest, Env. & W/L Management Deptt.
Government of Sikkim

Assistant Conservator of Forests
Territorial Sub-Divisional
Ravangla