

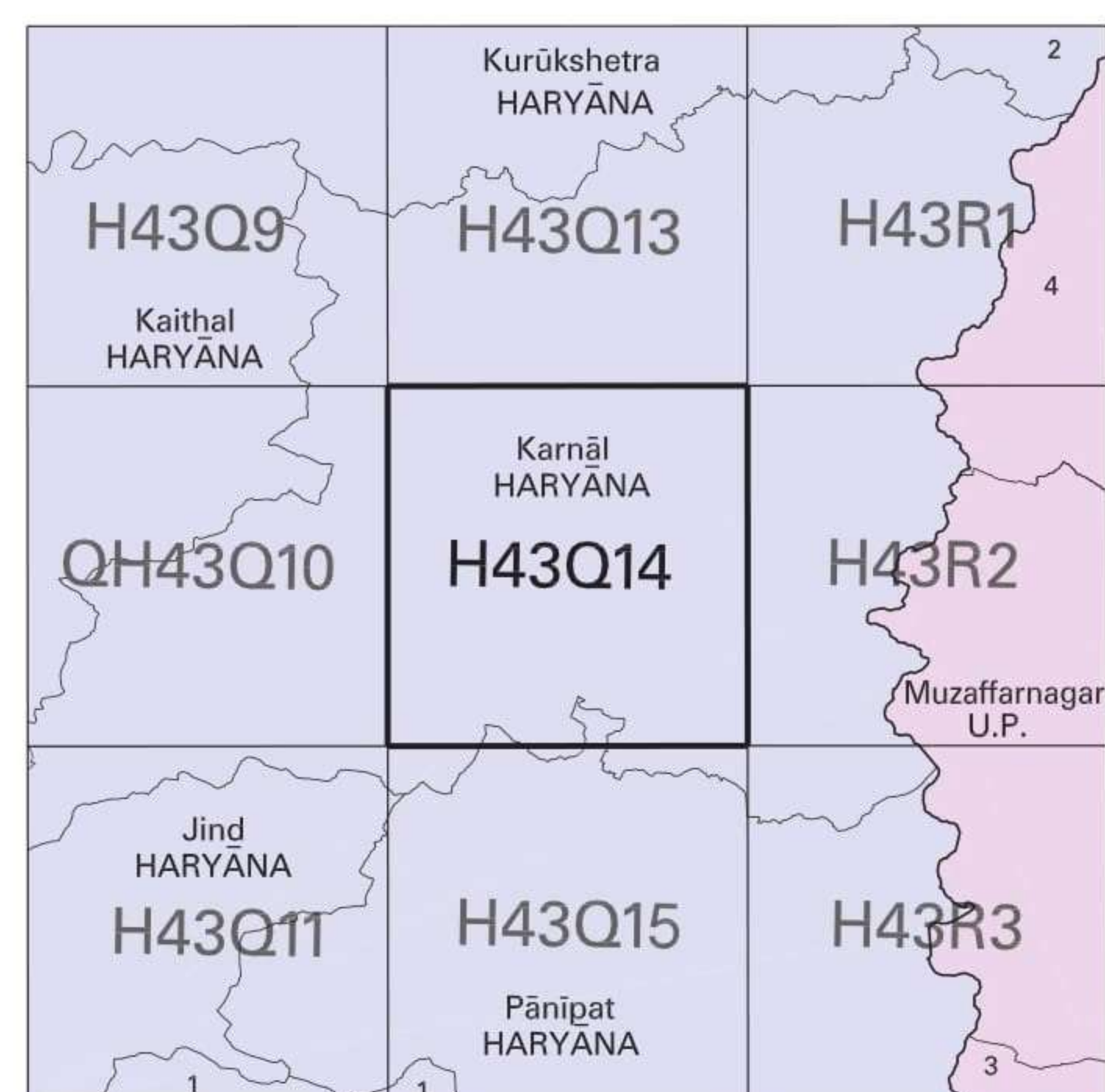


NOT FOR EXPORT

OPEN SERIES MAP

No. H43Q14

Scale 1:50,000



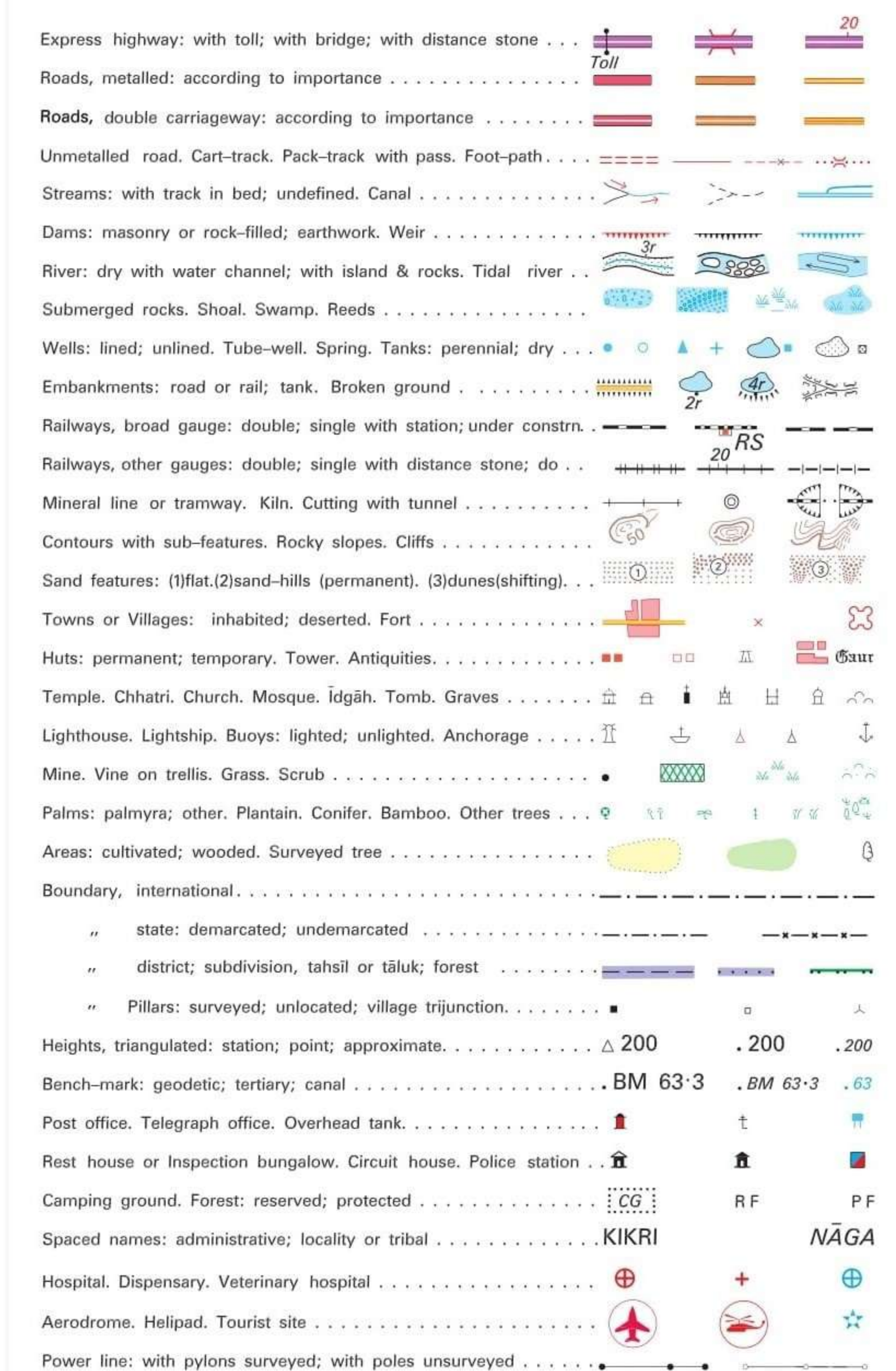
1 Sonapat, HARYANA. 2 Yamunanagar, HARYANA. 3 Bāghpat, U.P. 4 Sahāranpur, U.P.

भारतीय सर्वेक्षण विभाग SURVEY OF INDIA

1st Edition 2007.

Price : Rs. 50/-

CONVENTIONAL SYMBOLS



REFERENCE

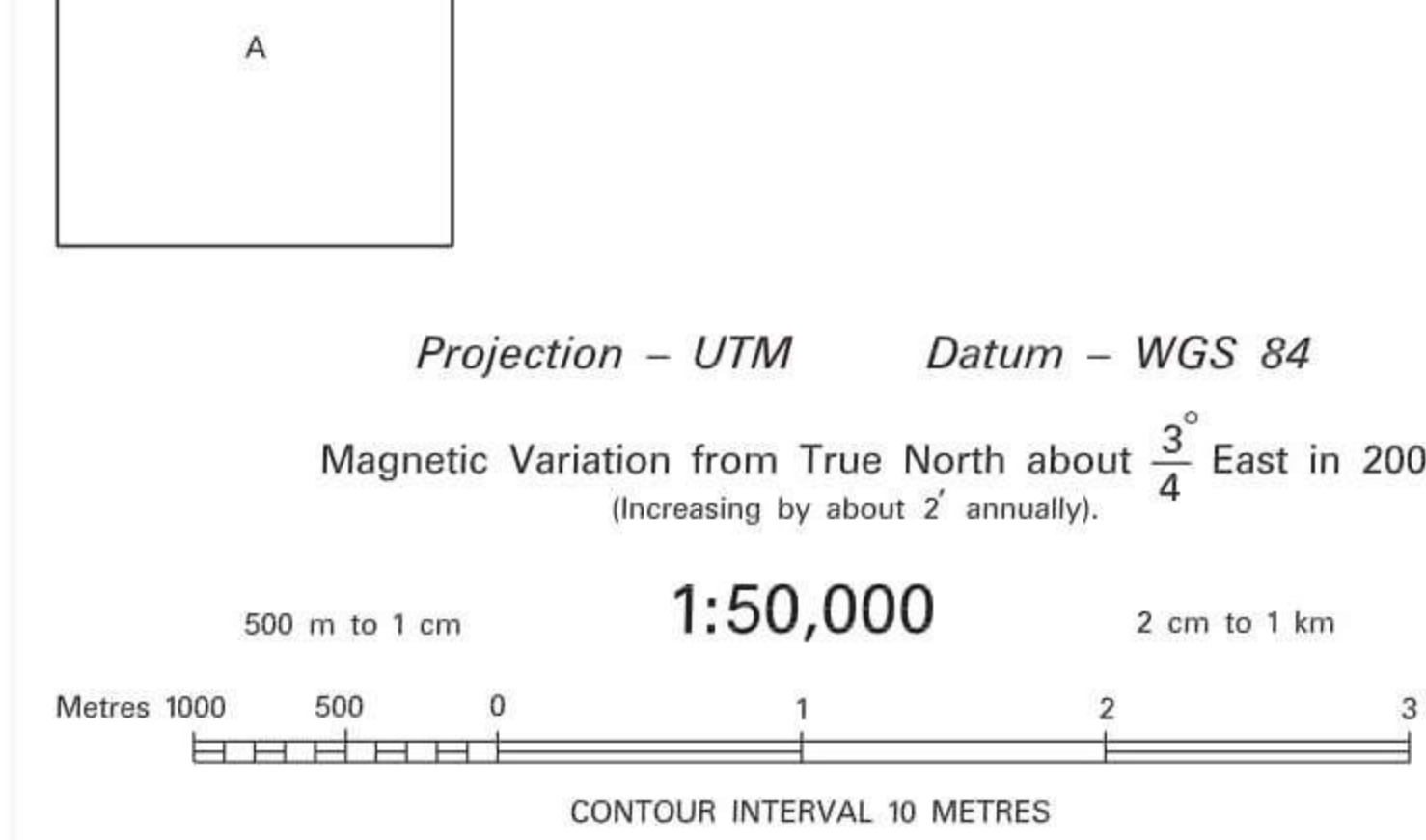
NH 1 National Highway No. 1

NOTES :-

Heights are in metres and above Indian mean sea level. Contours are approximate. Tanks shown dry in this area usually contain water from July to March. Unsettled roads and cart-tracks in this sheet are generally motorable in dry season. Permission to use those along canals is required from the Irrigation authorities. A relative height, e.g., 20 marked along a canal indicates the height of the top of the canal embankment above the adjacent country. 3,000-acre recontouring scheme of Bhārkā Dam Project Surveys and their numbers are shown as tertiary bench-marks thus ... H 431, BM 241-3

COMPILATION INDEX

A. Surveyed during 1989-90. Updated for major details during 2005-06.

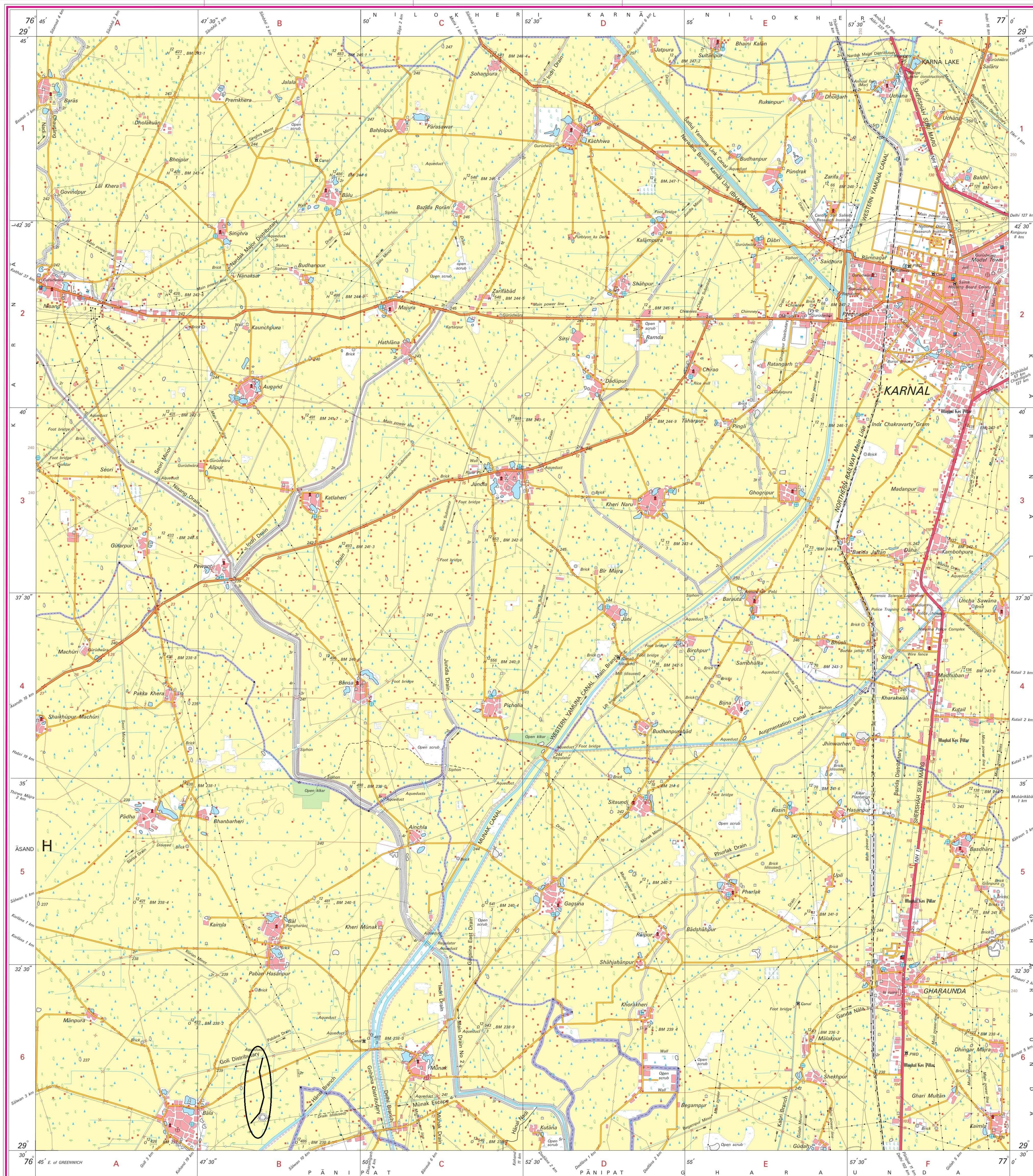


For further details about this map, please contact Director Haryana Geo-Spatial Data Centre Survey of India, Sector 32 A Chandigarh. Fax : 0172 - 2604671

WEBSITE - www.surveyofindia.gov.in

Reproduction in whole or part by any means is prohibited without the written permission of Survey of India, the National Mapping Agency.

GOVERNMENT OF INDIA COPYRIGHT, 2007.



REG. No. -WPG 077 (Haryana) GDC-150(2008)

भारत के नक्शाकार मेजर जनरल रोस गोपाल राव, बी.टेक., पी.डी. (आंतरिक फोटो), मि.एम. ए.सी., ए.एस. सर्वेक्षण जनरल ऑफ इंडिया, सर्वेक्षण ऑफ इंडिया, हाथिबार्कला एस्टेट, पोस्ट बॉक्स नं. 37, देहरादून - 248001 (उत्तरांचल)

PRINTED AT THE WESTERN PRINTING GROUP OF SURVEY OF INDIA.