

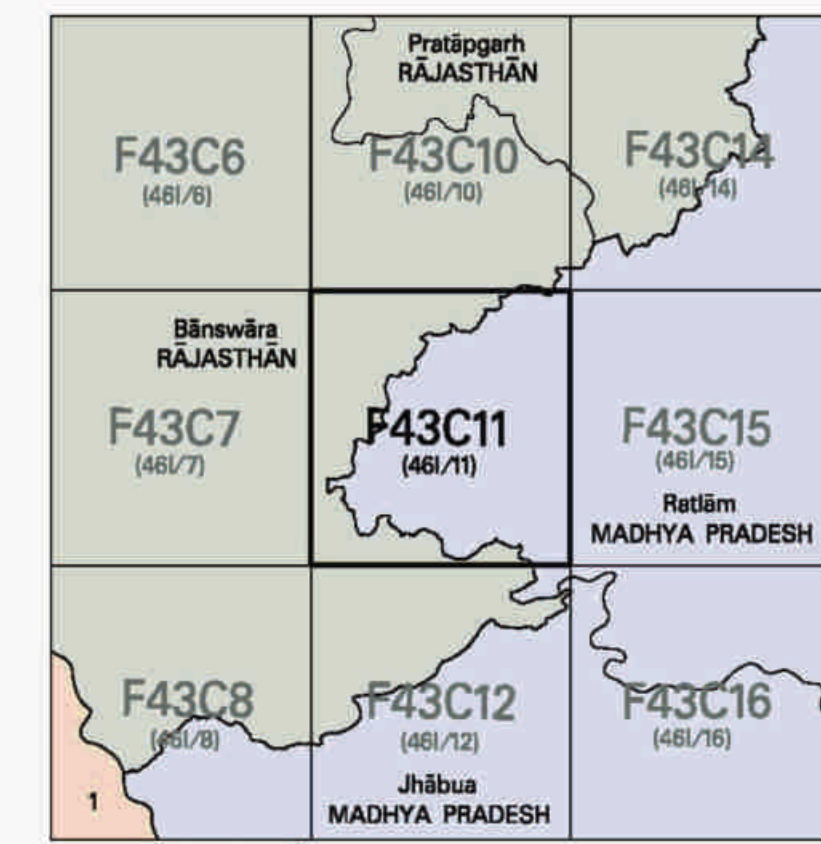


निर्वाह के लिए नहीं NOT FOR EXPORT

OPEN SERIES
MAP

No. F43C11

Scale 1:50,000



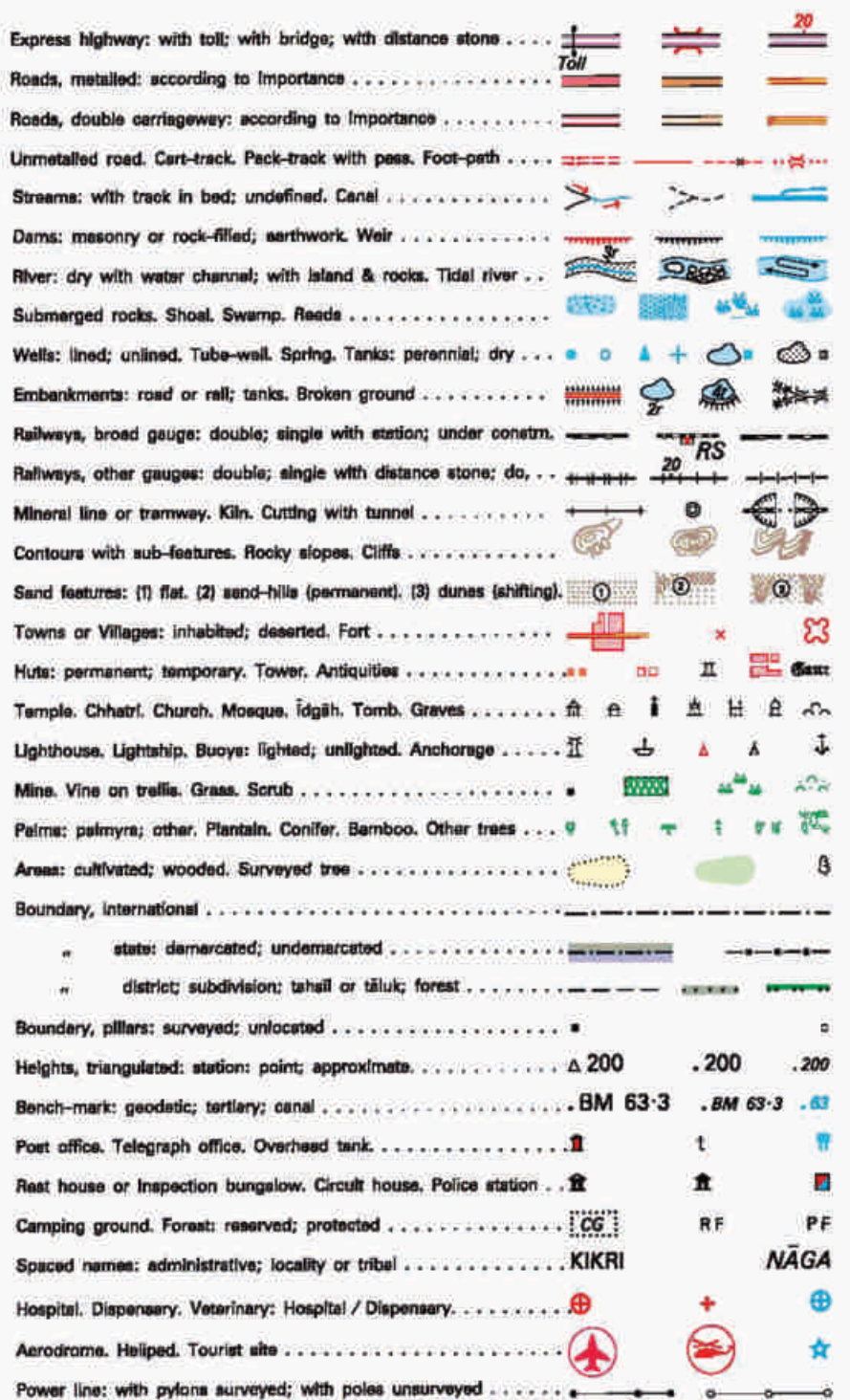
भारतीय सर्वेक्षण विभाग

SURVEY OF INDIA

1st Edition 2013.

Price: ₹ 84/-

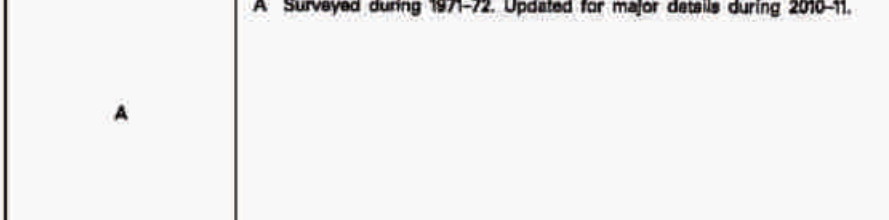
CONVENTIONAL SYMBOLS



NOTES:-

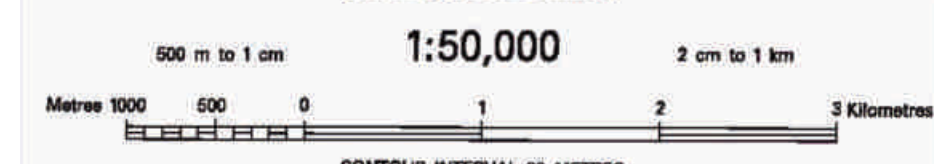
Heights are in metres and above Indian mean sea level.
Contours are approximate.
A relative height, e.g., 50, represents the approximate height, in metres, between the top and bottom of a steep slope.
Towns shown in this area usually receive water from July to January.
Cultivation is periodic and dependent on rainfall.
Unsettled roads in this area are generally metalled in dry areas.
The state boundary between Madhya Pradesh and Rajasthan States has been surveyed as pointed out by the local officials on the ground but has not been verified by the Government of India.
Height of a hill which is used for collection of water.
Road Party is shown as follows:-

COMPILED INDEX



Projection - UTM Datum - WGS 84

Magnetic Variation from True North about 1° West in 2005.
(Decreasing by about 2' annually)

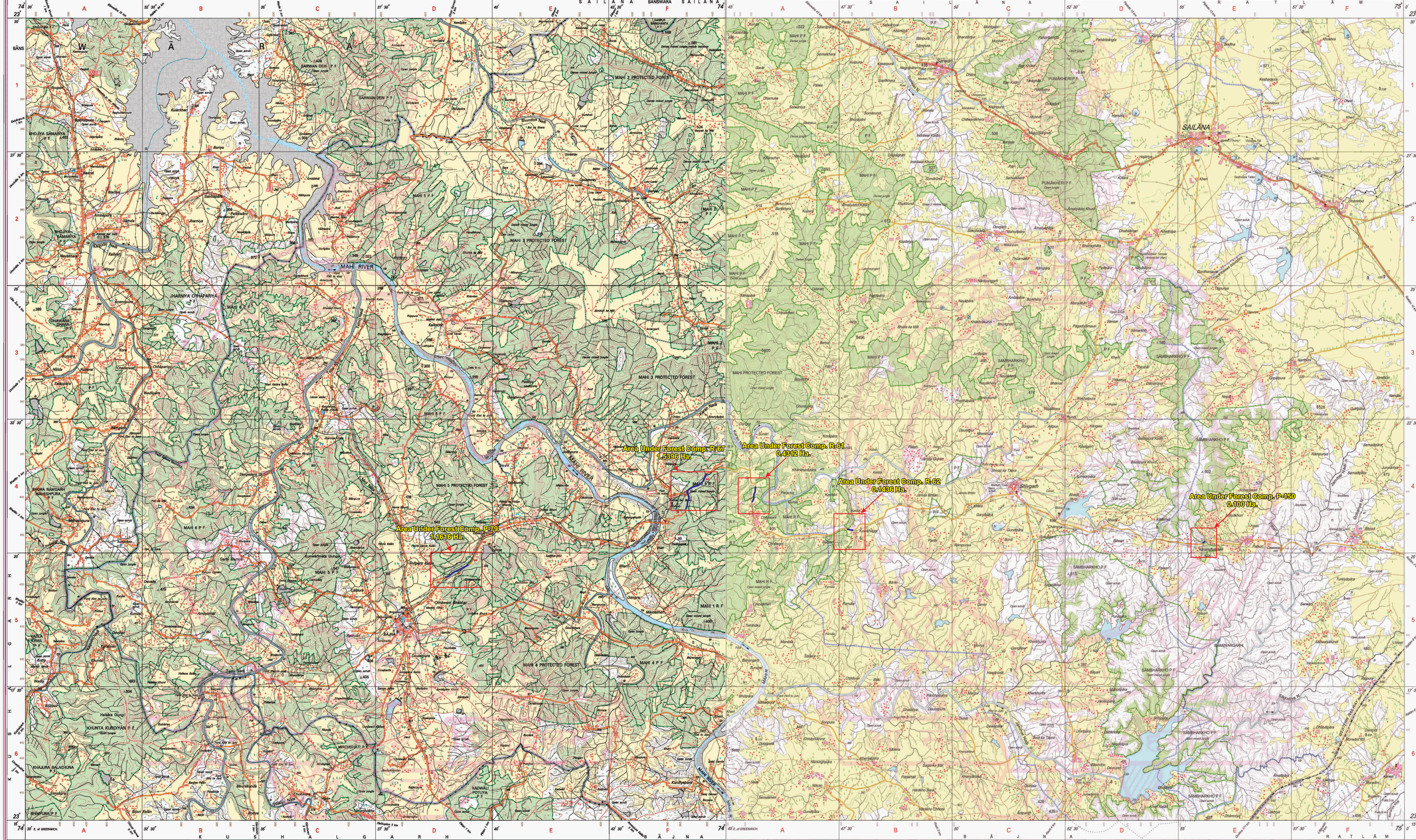


For further details about this map, please contact

Director
Rajasthan Geo-Spatial Data Centre
Survey of India
Sector 10, VidyaChamargar
Jaipur.

Reproduction in whole or part by any means is prohibited without the written permission of Survey of India, the National Mapping Agency.

GOVERNMENT OF INDIA COPYRIGHT, 2013.



Printed at the Western Printing Group of Survey of India, (P.O. D11) Madhya Pradesh (G.O. 140/2001-1015).

निर्वाह के लिए नहीं NOT FOR EXPORT
Published under the direction of Survey General of India,
Survey of India, Hattibankala Estate, Post Box No. 37, Dehra Dun - 248001 (Uttarakhand),
Department of Science & Technology, Government of India.

निर्वाह के लिए नहीं NOT FOR EXPORT
Published under the direction of Survey General of India,
Survey of India, Hattibankala Estate, Post Box No. 37, Dehra Dun-248001 (Uttarakhand),
Department of Science & Technology, Government of India.

Executive Engineer
Public Works Department
Division Ratham (M.P.)

Printed at the Southern Printing Group of Survey of India.

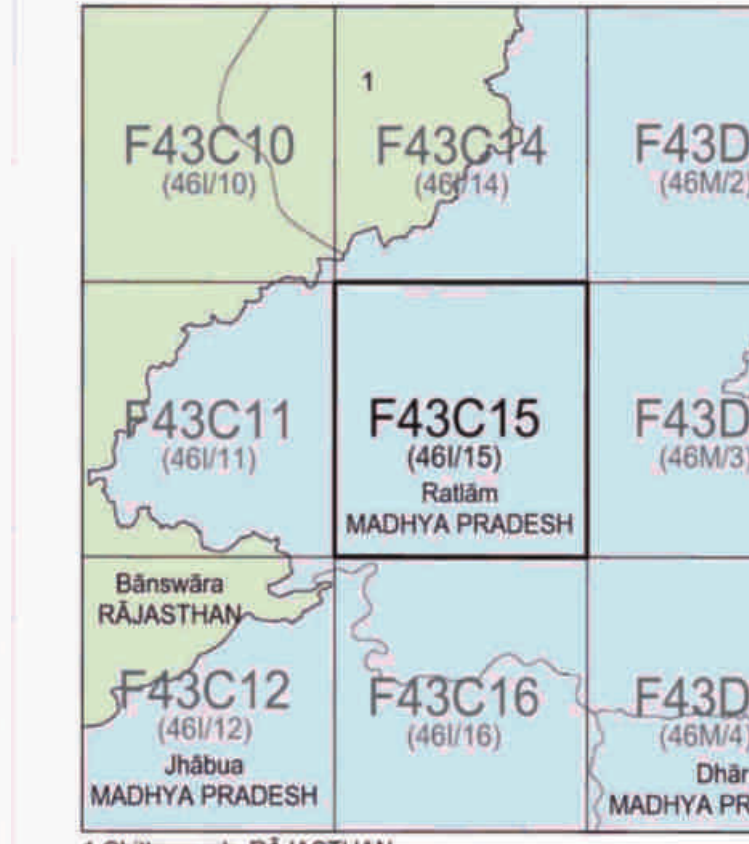


निर्वाह के लिए नहीं NOT FOR EXPORT

OPEN SERIES
MAP

No. F43C15

Scale 1:50,000



भारतीय सर्वेक्षण विभाग

SURVEY OF INDIA

1st Edition 2010.

Price: ₹ 80/-

CONVENTIONAL SYMBOLS



NOTES:-

Heights are in metres and above Indian mean sea level.
Contours are approximate.
A relative height, e.g., 50, represents the approximate height, in metres, between the top and bottom of a steep slope.

COMPILED INDEX



Projection - UTM Datum - WGS 84

Magnetic Variation from True North about 1° West in 2005.
(Decreasing by about 2' annually)



For further details about this map, please contact

Director
Madhya Pradesh Geo-Spatial Data Centre
Survey of India
Survey Colony, Vijaynagar
Jabalpur.

Reproduction in whole or part by any means is prohibited without the written permission of Survey of India, the National Mapping Agency.

GOVERNMENT OF INDIA COPYRIGHT, 2013.