

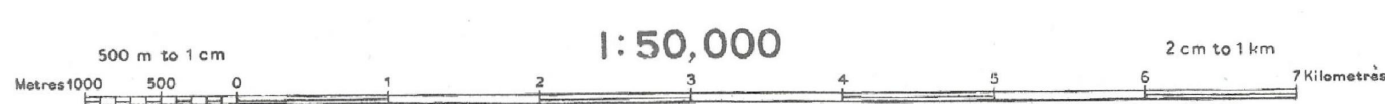
Res. No. 425/10/77 (NWC ST/DO/9/150,000/1513/79-25,006/85-3004-10/02/87/18/10/98.

Index to Sheets

43 1/2	43 1/2	43 1/2
43 1/2	43 1/2	43 1/2
43 1/2	43 1/2	43 1/2

1: Edition 1973; 2nd 1977.
Previous Editions on 1: inch scale: 1st 1920; 2nd 1936;
3rd 1936; 4th 1936; 5th 1937.

Published under the direction of Major General K.L. Khosla, B.Sc., B.E. (Civil), F.I.S., F.I.E., F.I.G.U., M.A.S.C.E. (U.S.A.), Surveyor General of India, 1977.

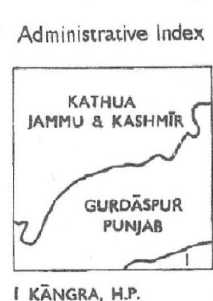


HEIGHTS & CONTOURS IN METRES
CONTOUR INTERVAL 20 METRES

Water features are shown in blue where they generally contain water.
Cultivated areas are coloured yellow.
The exterior boundaries of areas of Reserved or Protected Forests are shown by green ribbons.
Contours are approximate.
A relative height, e.g., 30, represents the approximate height in metres between the top and bottom of a steep slope.
Wooded areas are coloured green. Scattered trees and other vegetation are in green, but prominent surveyed trees are in black.

The kilometre stone numbers along roads and railways are shown in slant type e.g., '3'; whereas Milestones numbers are shown in upright type, e.g., 'Y'.
A relative height, e.g., 30, marked along a canal, indicates the height of the top of the canal embankment above the adjacent country.
Canal distance stones in Gurdaspur District are 1,000 feet apart and every fifth stone is shown whereas in other areas these are 1,000 metres apart and every one is shown.
The triangulated heights and contours in this sheet have not been adjusted to the heights of the spirit-levelled bench-marks and may not be strictly in accordance with them.
Permission to use unmetalled roads and cart-tracks along canals is required from the Irrigation authorities.
Tanks, shown dry, in this area usually contain water from July to March.
The area adjoining the Ravi River is liable to change owing to continual fluctuation in the course of the river.
This sheet has been compiled from 1:25,000 survey carried out during 1967-68 with additions and alterations based on verification survey carried out during 1972-73, on 1:50,000 and 1974-78 on 1:50,000 scale.
The forest areas in this sheet are Government Reserves. Their boundaries where demarcated have been surveyed as pointed out by the local officials.
Unmetalled roads and cart-tracks in this sheet are usually motorable in dry season.
The state boundaries between Punjab and Jammu & Kashmir and Punjab and Himachal Pradesh States have been surveyed as pointed out by the local officials on the ground but have not been verified by the Punjab Government.

REFERENCES
NH 1A National Highway No. 1A. N.R. 1 P.S. Northern Railway Jullundur Pathankot Section.



Printed at the H.O. (H.L.G.) Printing Group of Survey of India.

Administrative Index

KATHUA
JAMMU & KASHMIR
GURDASPUR
PUNJAB
KANGRA, N.P.

Towns or Villages: inhabited, deserted, Fort, etc.
Huts: permanent, temporary, Tower, Antiquities, etc.
Temple, Chattr, Chaur, Mosque, Jaga, Tomb, Graves, etc.
Lighthouse, Lightship, Buoy, Lighted, unlighted, Anchorage, etc.
Mine, Vine on wall, Grass, Scrub, etc.
Palms, palm-forest, Plantain, Conifer, Bamboo, Other trees, etc.
Boundary: International, State, District, Sub-district, or State, Forest, etc.
Boundary pillars: surveyed, uncoloured, village, junction, etc.
Height, triangulated, station, point, approximate, etc.
Bench-mark, geodetic, tertiary, canal, etc.
Post office, Telegraph office, Combined office, Police station, etc.
Bungalows, dhaba, travellers' inspection, Radio-tower, etc.
Circular house, Camping ground, Forest, reserved, protected, etc.
Spacial names: administrative, locally or tribal, etc.

GOVERNMENT OF INDIA COPYRIGHT, 1977.
Price: Twenty Rupees.

RESTRICTED
This map is not to be published, copied or reproduced in part or in whole either by photography or by any other means should be kept in safe custody and handled by authorized persons only.

REV	DATE	DESCRIPTION OF REVISIONS	BY

LEGEND
Proposed Division of Forest Land
Proposed Alignment
Proposed ROW
Proposed ROW
District Boundary
State Boundary

CLIENT:
NATIONAL HIGHWAYS AUTHORITY OF INDIA
(Ministry of Road, Transport & Highways)
Government of India
G-5 & 6, Sector - 10, New Delhi - 110075

CONSULTANT:
FEEDBACK INFRA
Feedback Infra Private Limited
15th Floor, Tower 9B
DLF Cyber City Phase-III,
Gurgaon 122 002
The information contained herein is Confidential & Property of Feedback Infra Pvt. Ltd. and not for Publication. The Information is Issued on the Understanding that no part thereof shall be Copied or Communicated to a Third Party without Authorisation in Writing from Feedback Infra Pvt. Ltd.

Drawn by: D.J.
Designed by: CS
Checked by: SB
Approved By: P.R.
Scale: 1:50000
Date: January - 2022

PROJECT:
"Construction of Four-lane access controlled Expressway from junction with Pathankot-Gurdaspur road (NH-54) and Balasa to Junction with Hira Nagar road near village Gurha Balidharan of Delhi-Katra Expressway (Phase II) on HAM (Ch. 423+500 to 434+000 in Punjab) and Greenfield connectivity from Govindpur village on Delhi-Amritsar Katra Expressway to Talwara village on NH-44 (Pathankot by-pass) (Km 0+000 to Km 12+500) under Bharatmala Pariyojna"

TITLE:
GEOREFERENCE SOI MAP SHOWING PROPOSED ALIGNMENT
GURDASPUR & PATHANKOT DISTRICT

DRG NO.: FIPL-00001427/HW/SOI-01

REV. 0
SHEET 1 of 1

परियोजना निदेशक/Project Director
भारतीय राष्ट्रीय राजमार्ग प्राधिकरण
National Highways Authority of India
राष्ट्रीय राजमार्ग परियोजना, नूतन
नया दिल्ली

निर्यात के लिए नहीं NOT FOR EXPORT.

KANGRA DISTRICT.
KATHUA DISTRICT.
GURDASPUR DISTRICT.

RESTRICTED

Surveyed 1967-68
(Also see footnotes).

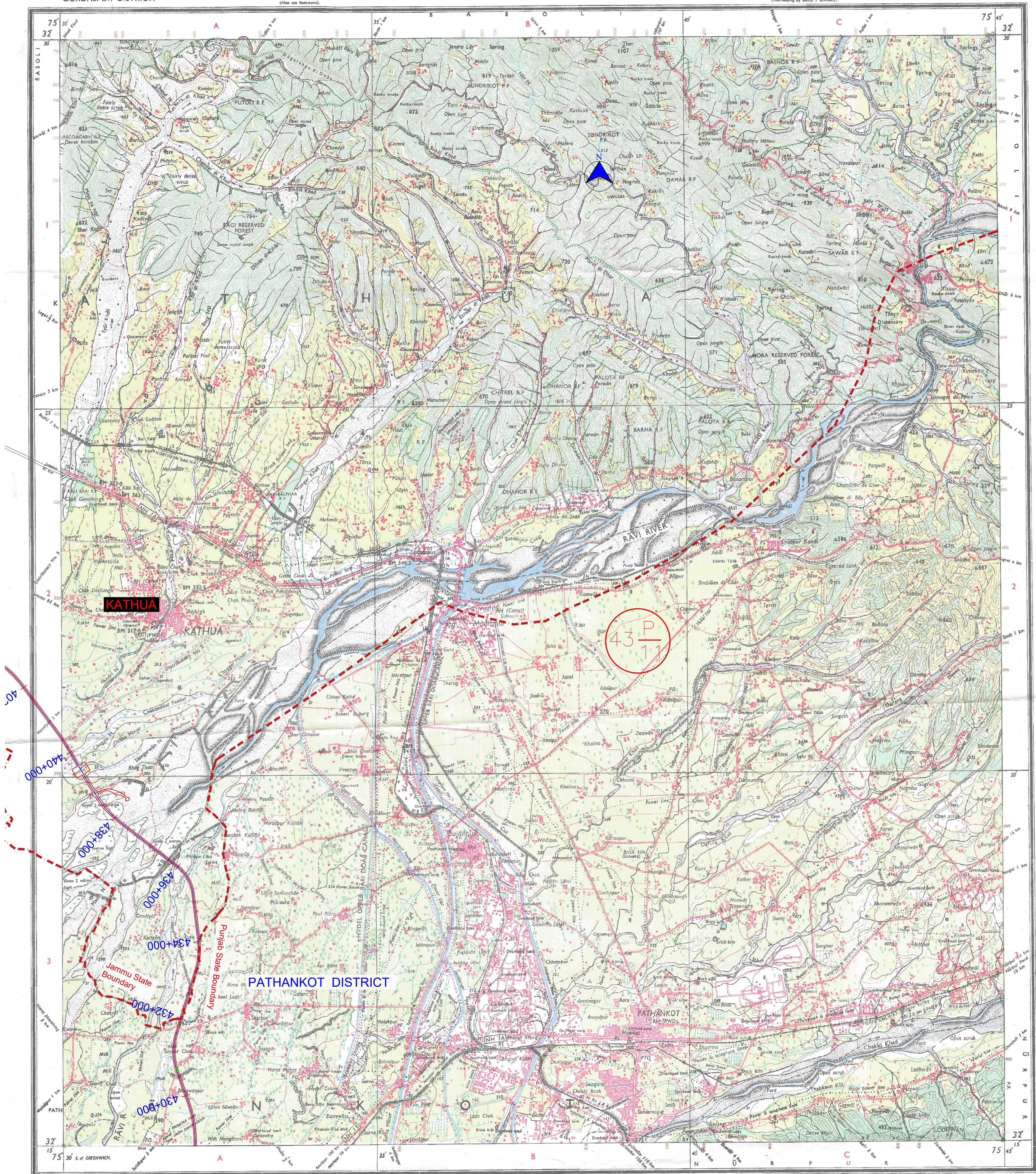
HIMACHAL PRADESH JAMMU & KASHMIR, PUNJAB

SECOND EDITION

Magnetic Variation from True North about 1° East in 1970.
(Decreasing by about 1' annually).

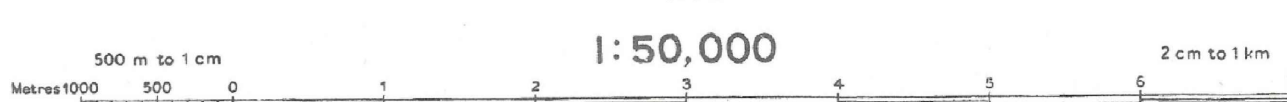
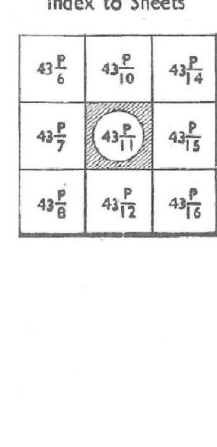
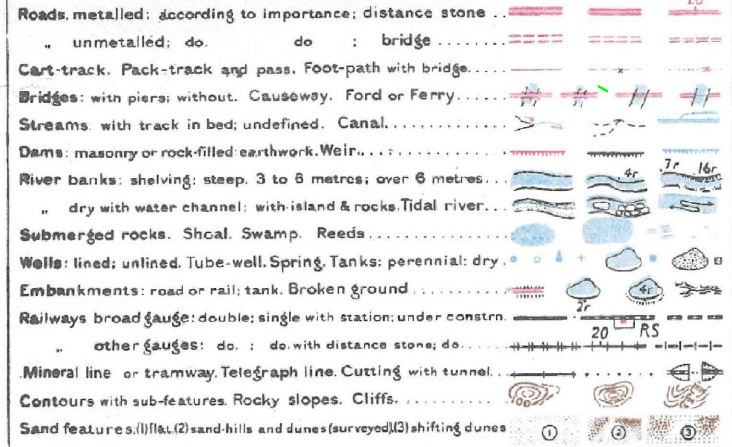
No. 43 P

INDIA
REFER TO THIS MAP AS - 1:50,000
SHEET 43 P/11 SECOND EDITION



Ref. No. 6255 HD/77 (NYC 57/D.O. 9-1-50/2001-1512/79-25006/85-3006-10/06/87-15/10/98).

Published under the direction of Major General K.L. Khosla, B.Sc., B.E. (Civil), F.R.S., F.I.E., F.I.G.U., A.S.C.E. (U.S.A.), Surveyor General of India, 1977.



HEIGHTS & CONTOURS IN METRES
CONTOUR INTERVAL 20 METRES

Water features are shown in blue where they generally contain water. Contours are approximate. A relative height, e.g., 37, marked along a canal, indicates the height of the top of the canal embankment above the adjacent country. The exterior boundaries of areas of Reserved or Protected Forests are shown by green ribbons. The untroughed ridges and contours in this sheet have not been adjusted to the height of the spirit-levelled bench-marks and may not be strictly in accordance with them. Permission to use unmetalled roads and cart-roads along canals is required from the Irrigation authorities. Tanks, shown dry, in this area usually contain water from July to March. The area adjoining the Ravi River is liable to change owing to continual fluctuations in the course of the river. This sheet has been compiled from 1:25,000 survey carried out during 1967-68 with additional alterations based on verification survey carried out during 1972-73. On 1:50,000 and 1976/78 on 1:25,000 scale. The forest areas in this sheet are Government Reserves. Their boundaries where demarcated have been surveyed as pointed out by the local officials. Unmetalled roads and cart-roads in this sheet are usually metropolised in dry season. The state boundaries between Punjab and Jammu & Kashmir and Punjab and Himachal Pradesh States have been surveyed as pointed out by the local officials on the ground but have not been verified by the Punjab Government.

REFERENCES

CLIENT:



NATIONAL HIGHWAYS AUTHORITY OF INDIA
(Ministry of Road, Transport & Highways)
Government of India
G-5 & 6, Sector-10, New Delhi-110075

CONSULTANT:

FEEDBACK INFRA
Feedback Infra
Private Limited
15th Floor, Tower 9B
DLF Cyber City Phase-III,
Gurgaon 122 002

The information contained herein is Confidential & Property of Feedback Infra Pvt. Ltd. and not for Publication. The Information is Issued to the Understanding that no part thereof shall be Copied or Communicated to a Third Party without Authorisation in Writing from Feedback Infra Pvt. Ltd.

Drawn by:

D.J.

Designed by:

CS

Checked by:

SB

Approved By:

P.R.

Scale: 1:50000

Date:

January - 2022

PROJECT:

CS

SB

P.R.

January - 2022

DRG NO.:

FIPL-0001427/HW/SOI-02

REV. 0

SHEET 1 of 1

1 of 1

RESTRICTED

This map is NOT to be published, copied or reproduced in any form or in whole or in part by any other means should be kept in safe custody and handled by authorized persons only.

परियोजना निदेशक/Project Director
भारतीय राष्ट्रीय राजमार्ग प्राधिकरण
National Highways Authority of India
(Ministry of Road, Transport & Highways)
Government of India