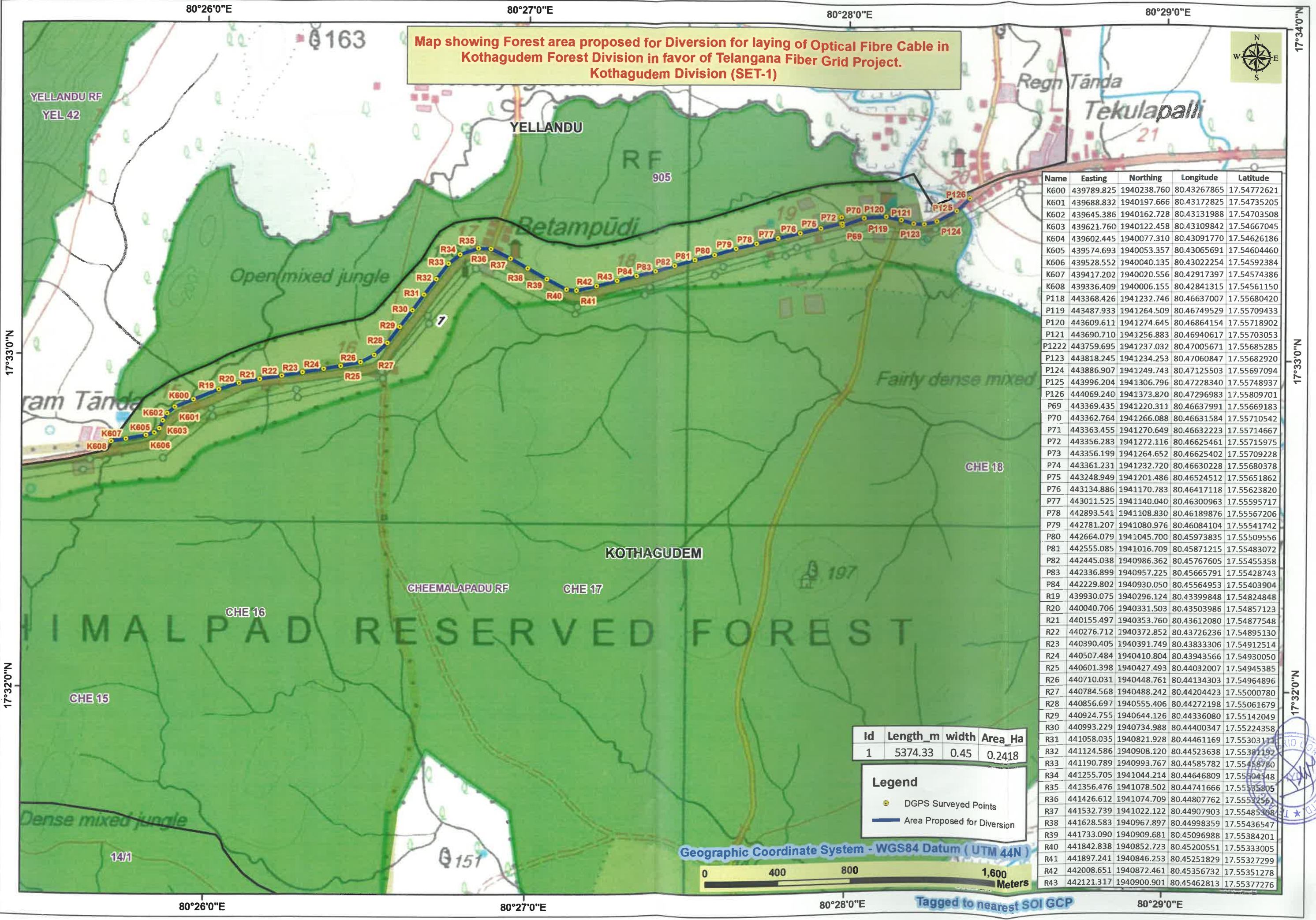


Map showing Forest area proposed for Diversion for laying of Optical Fibre Cable in Kothagudem Forest Division in favor of Telangana Fiber Grid Project. Kothagudem Division (SET-1)



Name	Easting	Northing	Longitude	Latitude
K600	439789.825	1940238.760	80.43267865	17.54772621
K601	439688.832	1940197.666	80.43172825	17.54735205
K602	439645.386	1940162.728	80.43131988	17.54703508
K603	439621.760	1940122.458	80.43109842	17.54667045
K604	439602.445	1940077.310	80.43091770	17.54626186
K605	439574.693	1940053.357	80.43065691	17.54604460
K606	439528.552	1940040.135	80.43022254	17.54592384
K607	439417.202	1940020.556	80.42917397	17.54574386
K608	439336.409	1940006.155	80.42841315	17.54561150
P118	443368.426	1941232.746	80.46637007	17.55680420
P119	443487.933	1941264.509	80.46749529	17.55709433
P120	443609.611	1941274.645	80.46864154	17.55718902
P121	443690.710	1941256.883	80.46940617	17.55703053
P122	443759.695	1941237.032	80.47005671	17.55685285
P123	443818.245	1941234.253	80.47060847	17.55682920
P124	443886.907	1941249.743	80.47125503	17.55697094
P125	443996.204	1941306.796	80.47228340	17.55748937
P126	444069.240	1941373.820	80.47296983	17.55809701
P69	443369.435	1941220.311	80.46637991	17.55669183
P70	443362.764	1941266.088	80.46631584	17.55710542
P71	443363.455	1941270.649	80.46632223	17.55714667
P72	443356.283	1941272.116	80.46625461	17.55715975
P73	443356.199	1941264.652	80.46625402	17.55709228
P74	443361.231	1941232.720	80.46630228	17.55680378
P75	443248.949	1941201.486	80.46524512	17.55651862
P76	443134.886	1941170.783	80.46417118	17.55623820
P77	443011.525	1941140.040	80.46300963	17.55595717
P78	442893.541	1941108.830	80.46189876	17.55567206
P79	442781.207	1941080.976	80.46084104	17.55541742
P80	442664.079	1941045.700	80.45973835	17.55509556
P81	442555.085	1941016.709	80.45871215	17.55483072
P82	442445.038	1940986.362	80.45767605	17.55455358
P83	442336.899	1940957.225	80.45665791	17.55428743
P84	442229.802	1940930.050	80.45564953	17.55403904
R19	439930.075	1940296.124	80.43399848	17.54824848
R20	440040.706	1940331.503	80.43503986	17.54857123
R21	440155.497	1940353.760	80.43612080	17.54877548
R22	440276.712	1940372.852	80.43726236	17.54895130
R23	440390.405	1940391.749	80.43833306	17.54912514
R24	440507.484	1940410.804	80.43943566	17.54930050
R25	440601.398	1940427.493	80.44032007	17.54945385
R26	440710.031	1940448.761	80.44134303	17.54964896
R27	440784.568	1940488.242	80.44204423	17.55000780
R28	440856.697	1940555.406	80.44272198	17.55061679
R29	440924.755	1940644.126	80.44336080	17.55142049
R30	440993.229	1940734.988	80.44400347	17.55224358
R31	441058.035	1940821.928	80.44461169	17.55303111
R32	441124.586	1940908.120	80.44523638	17.55381192
R33	441190.789	1940993.767	80.44585782	17.55458780
R34	441255.705	1941044.214	80.44646809	17.55504548
R35	441356.476	1941078.502	80.44741666	17.55558805
R36	441426.612	1941074.709	80.44807762	17.55582561
R37	441532.739	1941022.122	80.44907903	17.55485308
R38	441628.583	1940967.897	80.44998359	17.55436547
R39	441733.090	1940909.681	80.45096988	17.55384201
R40	441842.838	1940852.723	80.45200551	17.55333005
R41	441897.241	1940846.253	80.45251829	17.55327299
R42	442008.651	1940872.461	80.45356732	17.55351278
R43	442121.317	1940900.901	80.45462813	17.55377276

Id	Length_m	width	Area_Ha
1	5374.33	0.45	0.2418

Legend

- DGPS Surveyed Points
- Area Proposed for Diversion

Geographic Coordinate System - WGS84 Datum (UTM 44N)



Tagged to nearest SOI GCP

