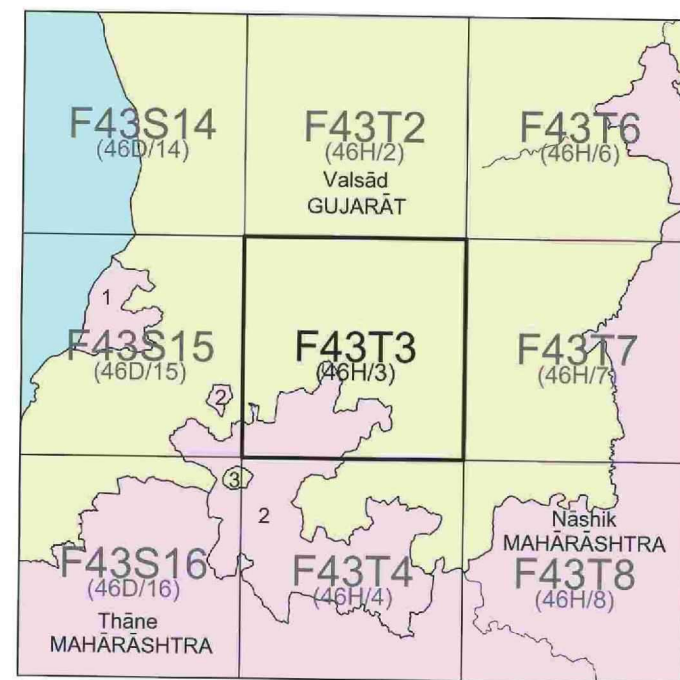




No. F43T3

Scale 1:50,000



- 1 Dāmān, GOA, DAMAN & DIU.
- 2 DĀDRA & NAGAR HAVELI.
- 3 Dharampur, GUJARĀT.

भारतीय सर्वेक्षण विभाग

SURVEY OF INDIA

1st Edition 2010.

Price : Rs. 70/-

CONVENTIONAL SYMBOLS

Express highway, with or without bridge, with distance shown ...

Roads, metalled: according to importance

Roads, double carriageway: according to importance

Unmetalled road: Cart-track, Pack-track; with stone, Foot-path

Streams, with track in bed, unconfined, Canal

Dams: masonry or rock-filled, earthenwork, Wall

River, dry with water channel, with island or rocks, Tidal river

Edged road, Kutch, Swampy Roads

Canals, with or without dam, Spring, Tanks; perennial, dry

Embankments, road or rail, tank, cross passage

Broad gauge, double: single with station, under construction

Railways, other gauges: double, single with distance shown

Mineral line or tramway, Kin, Cutting with tunnel

Contours with sub-fences, Rocky slopes, Cliffs

Salt features (1) (Haf. (Zhang) Hingonahingon) (Dyallares) (zhing)

Towns or villages: inhabited, deserted, Fort

Huts; Permanent, temporary, Tower, Antiquities

Temple, Chhatra, Chitra, Mosque, Idgah, Tomb, Graves

Lighthouse, Beacon, Light, Lighted, unlighted, Anchorage

Cities on foot, Road, Canal, River

Palms; palatial, other, Plantations, Cones, Bamboo, Other trees

Areas: cultivated, wooded, Surveyed tree

Boundary, international

... state demarcated, undemarcated

... district; subdivision, taluk or taluk, forest

Boundary pillars: surveyed, unisolated

Hedges, triangulated, station, point; approximate

Bench-mark: geodetic, levelling; canal ... BM 63-3 ... BM 63-3 ... BM 63-3

Rail office, Telegraph office, Overhead tank, Police station

Camping ground, Forest, station, point, or other

Spaced names: administrative, local, or tribal

Hospital, Dispensary, Veterinary, Hospital / Dispensary

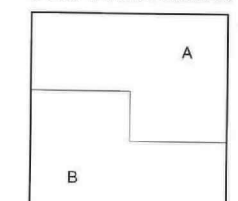
Aerodrome, Helipad, Tourist, state

Power line: with pylons surveyed; with poles unsurveyed

NOTES :-

The names of hamlets in this sheet are typed within brackets below the names of the main villages to which they belong.

COMPILATION INDEX



Projection - UTM Datum - WGS 84

Magnetic Variation from True North about $\frac{3}{4}^{\circ}$ West in 2005.

1:50 000

Metres 1000 500 0 1 2 3 Kilometres

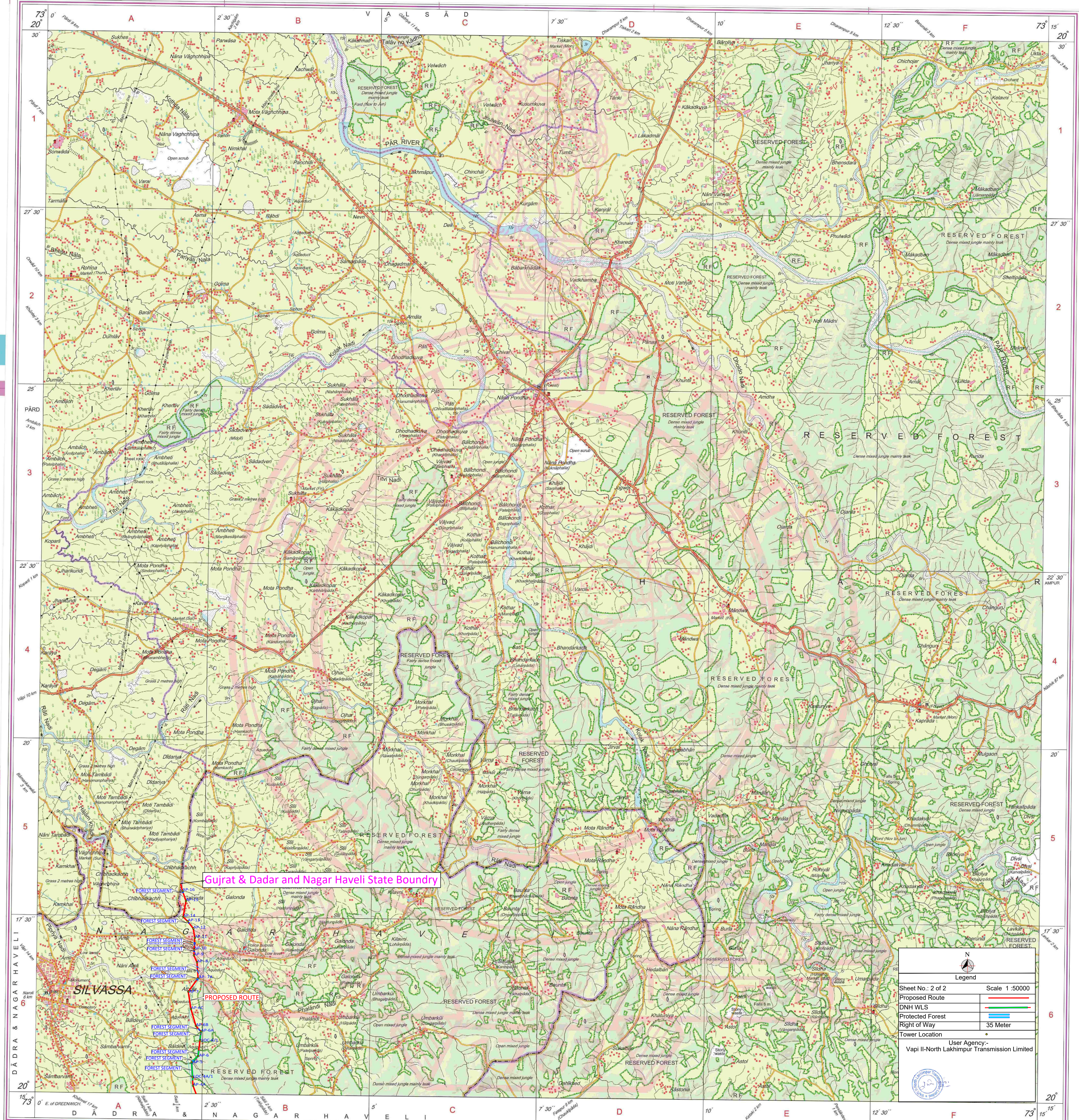
For further details about this map, please contact

Director
Mahārāshtra & Goa Geo-Spatial Data Centre
Survey of India, Phulenagar, Ālandi Road
Pune.

WEBSITE - www.surveyofindia.gov.in

Reproduction in whole or part by any means is prohibited without the written permission of Survey of India, the National Mapping Agency.

GOVERNMENT OF INDIA, COPYRIGHT, 2010.



REG. No. 9529 -SPG D'10 (Maharashtra & Goa GDC-1:50,000)-1515'15.

भारत के महासर्वेक्षक, स्वर्ण सुब्बा राव, बी०ई०, के निदेशन में प्रकाशित,
Published under the direction of Swarna Subba Rao, B.E., Surveyor General of India,
Survey of India, Hāthibarkala Estate, Post Box No.37, Dehra Dūn-248001 (Uttarākhand)
Department of Science & Technology, Government of India

PRINTED AT THE SOUTHERN PRINTING GROUP OF SURVEY OF INDIA.