

Jaunpur UTTAR PRADESH G44Q10 (63K/10)	G44Q14 (63K/14)	G44R2 (63O/2)
G44Q11 (63K/11)	G44Q15 (63K/15)	G44R3 (63O/3)
G44Q12 (63K/12)	G44Q16 (63K/16)	G44R4 (63O/4)

1 Azamgarh, UTTAR PRADESH.
 2 Ghazipur, UTTAR PRADESH.
 3 Sant Ravidas Nagar, UTTAR PRADESH.

PLOTTER PRINT

भारतीय सर्वेक्षण विभाग SURVEY OF INDIA
 1st Edition 2011. Price: **RS 250**

CONVENTIONAL SYMBOLS

Express highway: with toll, with bridge, with distance stone
 Roads, metalled: according to importance
 Roads, double carriageway: according to importance
 Unmetalled road: Cart-track, Pack-track with pass, Foot-path
 Streams: with track in bed, undefined, Canal
 Dams: masonry or rock-filled, earthwork, Weir
 River: dry with water channel, with island & rocks, Tidal river
 Submerged rocks: Shoal, Swamp, Reeds
 Wells: lined, unlined, Tube-well, Spring, Tanks: perennial, dry
 Embankments: road or rail: tank, Broken ground
 Railways, broad gauge: double, single with station, under construction
 Railways, other gauges: double, single with distance stone, do
 Mineral line or tramway: Km, Cutting with tunnel
 Contours with sub-feetures: Rocky slopes, Cliffs
 Sand features: (1)flat, (2)sand-hills(permanent), (3)dunes(shifting)
 Towns or Villages: inhabited, deserted, Fort
 Huts: permanent, temporary, Tower, Antiquities
 Temple, Chhat, Church, Mosque, Idgah, Tomb, Graves
 Lighthouse, Lightship, Buoys: lighted, unlighted, Anchorage
 Mine: Vine on trellis, Grass, Scrub
 Palms, pinyas, other: Plantain, Conifer, Bamboo, Other trees
 Areas: cultivated, wooded, Surveyed tree
 Boundary, international
 state: demarcated, undemarcated
 district: subdivision, taluk or taluk, forest
 Boundary pillars: surveyed, unlocated
 Heights, triangulated station: point, approximate
 Bench mark: geodetic, tertiary, canal
 Post office, Telegraph office, Overhead tank
 Rest house or inspection bungalow, Circuit house, Police station
 Camping ground, Forest reserved, protected
 Speed names: administrative, locality or tribal
 Hospital, Dispensary, Veterinary Hospital / Dispensary
 Aerodrome, Helipad, Tourist site
 Power line, with pylons supported, with poles unsurveyed

Legend

Proposed Protected Forest Land to be Diverted

REFERENCES

NH-2 National Highway No. 2	IT Industrial Technical Institute
FCI Food Corporation of India	FB Foot Bridge

NOTES

Heights are in metres and above Indian mean sea level.
 Contours are approximate.
 A relative height, e.g., 5', represents the approximate height, in metres, between the top and bottom of a steep slope.
 The kilometre stone numbers along roads and railways are shown in slant type, e.g., 5' whereas milestone numbers are shown in upright type, e.g., 5'.
 A relative height, e.g., 30', against a well, in blue, indicates its total depth in metres.
 Tanks, shown dry in this area, usually contain water from July to December.
 All cart-tracks and unmetalled roads in this sheet are generally motorable in dry season. Permission to use the cart-track along Chhapra Minor is required from the irrigation authorities.
 The traverse heights and contours in this sheet have not been adjusted to the heights of the spirit-levelled bench-marks and may not be strictly in accordance with them.

COMPILATION INDEX

A Modern Survey 1973-75. Updated for major details & administrative boundaries during 2005-06.

Signature: *S. S. Sanyal*
 अविशाली अभियन्ता
 प्रो. ए. ए. सि. ए. सि.
 वाराणसी

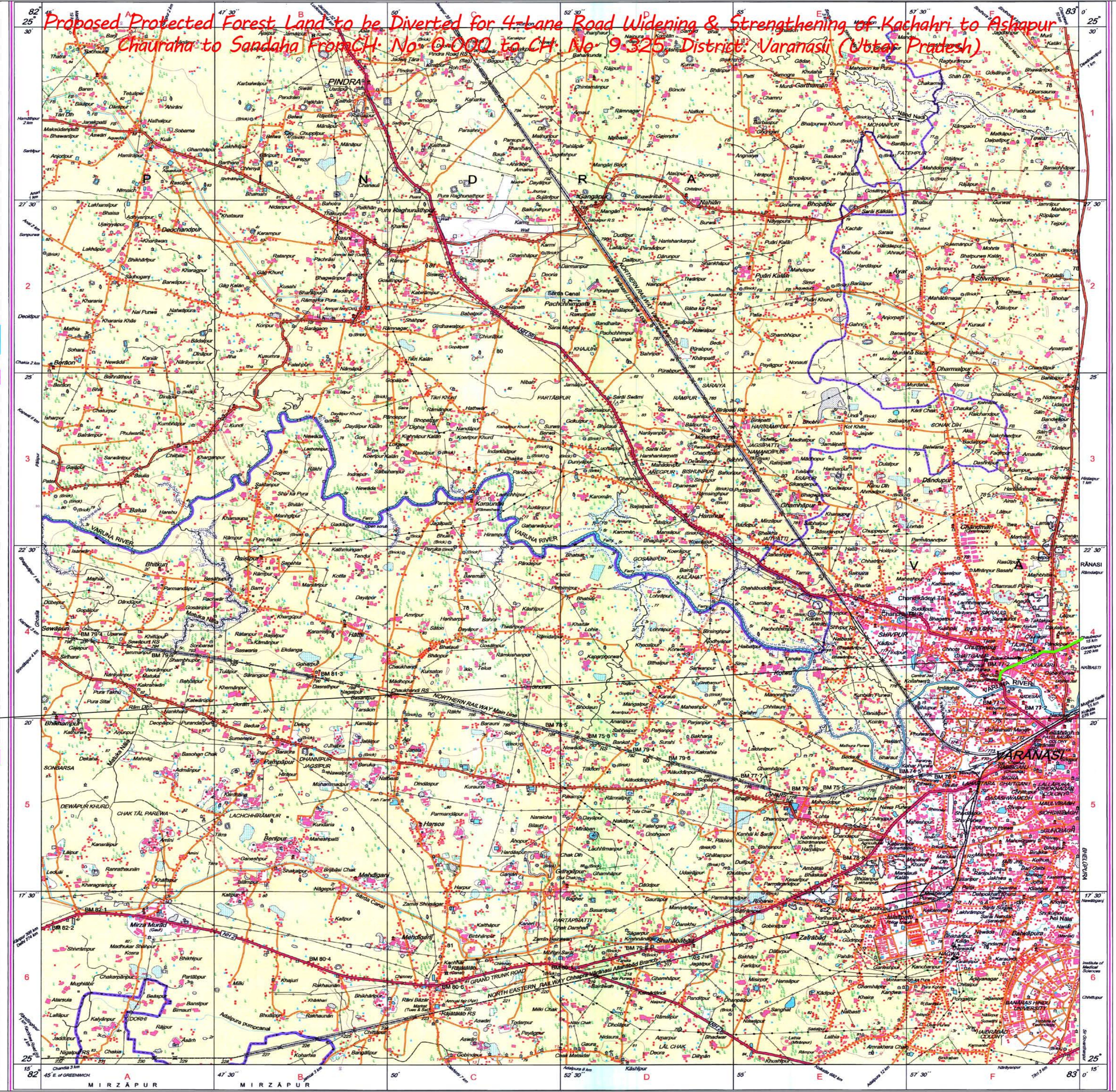
Projection - UTM Datum - WGS 84
 Magnetic Variation from True North about 1° West in 2005.
 (Decreasing by about 1' annually)

Scale: 1:50,000
 500 m to 1 cm
 2 cm to 1 km
 3 Kilometres

CONTOUR INTERVAL 20 METRES

For further details about this map, please contact
 Director
 East Uttar Pradesh Geo-Spatial Data Centre
 Survey of India
 B-2 Block, 2nd Floor, PICUP Bhawan, Gomti Nagar, Lucknow.

WEBSITE - www.surveyofindia.gov.in



No. G44R3
Scale 1:50,000

Jaunpur UTTAR PRADESH G44Q14 (63K/14)	G44R2 (63O/2)	Ghazipur UTTAR PRADESH G44R6 (63O/6)
Varensi UTTAR PRADESH G44Q15 (63K/15)	G44R3 (63O/3)	Chandauli UTTAR PRADESH G44R7 (63O/7)
G44Q16 (63K/16) Muzapur UTTAR PRADESH	G44R4 (63O/4)	G44R8 (63O/8)

1 > zamrafi, UTTAR PRADESH.

भारतीय सर्वेक्षण विभाग SURVEY OF INDIA
1st Edition 2010. Price: Rs. 70/-

CONVENTIONAL SYMBOLS

Express highway, with toll, with bridge, with distance stone		20
Roads, metalled: according to importance		
Roads, double carriageway, according to importance		
Unmetalled road: Cart-track, Pack-track with pass, Foot-path		
Stream: with track in bed, undefined; Canal		
Dams: masonry or rock-filled; earthwork; Weir		
Submerged rocks, Shoal, Swamp, Reeds		
Wells: lined, unlined; Tube-well; Storage; Tanks: perennial, dry		
Embankments: road or rail; bank; Broken ground		
Railways: broad gauge; double: single with station; under construction		
Railways: other gauges: double: single with distance stone; do		
Mineral line or tramway: Kils. Cutting with tunnel		
Contours with sub-features: Rocky slopes, Cliffs		
Land features: (1) flat; (2) hard-hill (permanent); (3) dunes/shifting		
Towns or Villages: inhabited, deserted, Fort.		
Huts: permanent; temporary; Tower; Antennae		
Temples, Chhatra, Church, Mosque, Ishan, Tomb, Graves		
Lighthouse, Lightship, Buoy; lighted, unlighted; Anchorage		
Mts. Vine on trails; Grass; Scrub		
Palms; palms; other; Plantain; Conifer; Bamboo; Other trees		
Areas: cultivated; wooded; Surveyed tree		
Boundary: international		
state: demarcated; undemarcated		
district: subdivision; label or label; forest		
Boundary pillars: surveyed; unlocated		
Height, triangulated; station; point; approximate		200, 200
Bench-mark: geodetic; tertiary; canal		BM 6313, BM 6313
Post office, Telegraph office, Overhead tank		
Rail house or inspection bungalow; Circuit house; Police station		
Camping ground; Forest: reserved; protected		RF, PF
Sacred names: administrative, locality or tribal		KKRI, No. 64
Hospital, Dispensary, Veterinary Hospital / Dispensary		
Aerodrome: Helped; Tourist site		
Power line: with pylons surveyed; with poles unsurveyed		

Legend
Proposed Protected Forest Land to be Diverted

REFERENCE
NH 2 National Highway No. 2
ICAR Research Agricultural Farm

NOTES
Heights are in metres and above Indian mean sea level
Contours are approximate
A relative height, e.g., 50, represents the approximate height, in metres, between the top and bottom of a steep slope
Tanks, shown dry in this area, usually contain water from July to December
The traverse heights and contours in this sheet have not been adjusted to the heights of the spirit-levelled bench-marks and may not be strictly in accordance with them
All contour lines and unmetalled roads in this sheet are generally not shown in dry season. Permission to use those along canals is required from the irrigation authorities
Areas adjoining the Ganga and Gomti Rivers are liable to change owing to continual fluctuations in courses of these rivers
The kilometre stone numbers along the cart track, roads, railways, canals and drains are shown in short type, e.g., 50 whereas milestone numbers are shown in upright type, e.g., 50

COMPILATION INDEX
A. Surveyed during 19/2-73. Updated for major details during 2005-07.

Projection - UTM
Datum - WGS 84
Magnetic Variation from True North about 1° West in 2005.
(Increasing by about 1 annually.)
Scale 1:50,000
CONTOUR INTERVAL 20 METRES
For further details about this map, please contact
Director
East Uttar Pradesh Geo-Spatial Data Centre
Survey of India
B-2 Block, 2nd Floor, P.C.U.P. Bhawan, Gomti Nagar, Lucknow.

