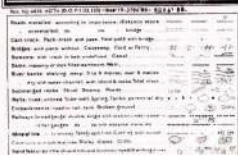


JABALPUR & MANDLA DISTRICTS



$25\frac{25}{100}$	$25\frac{25}{100}$	$44\frac{44}{100}$
$44\frac{44}{100}$	$25\frac{25}{100}$	$44\frac{44}{100}$
$25\frac{25}{100}$	$44\frac{44}{100}$	$25\frac{25}{100}$

Published under the direction of Dr. Hans Martin, M.D.
1974.

1:50,000

HEIGHT & CONTOUR IN METRES

*Author's address: 4000 University Avenue, Suite 1000, Berkeley, CA 94720, USA.
E-mail: andrew@cs.berkeley.edu

On average, individuals of older age groups in industrialized society are shorter.

Department of Psychology, University of Illinois at Chicago, Chicago, Illinois 60607

The unprinted pages will continue to fly.

Author's address: University of Twente, Enschede, The Netherlands

--	--

0.000000

1. *Chlorophyll a*

1994a,b).

23

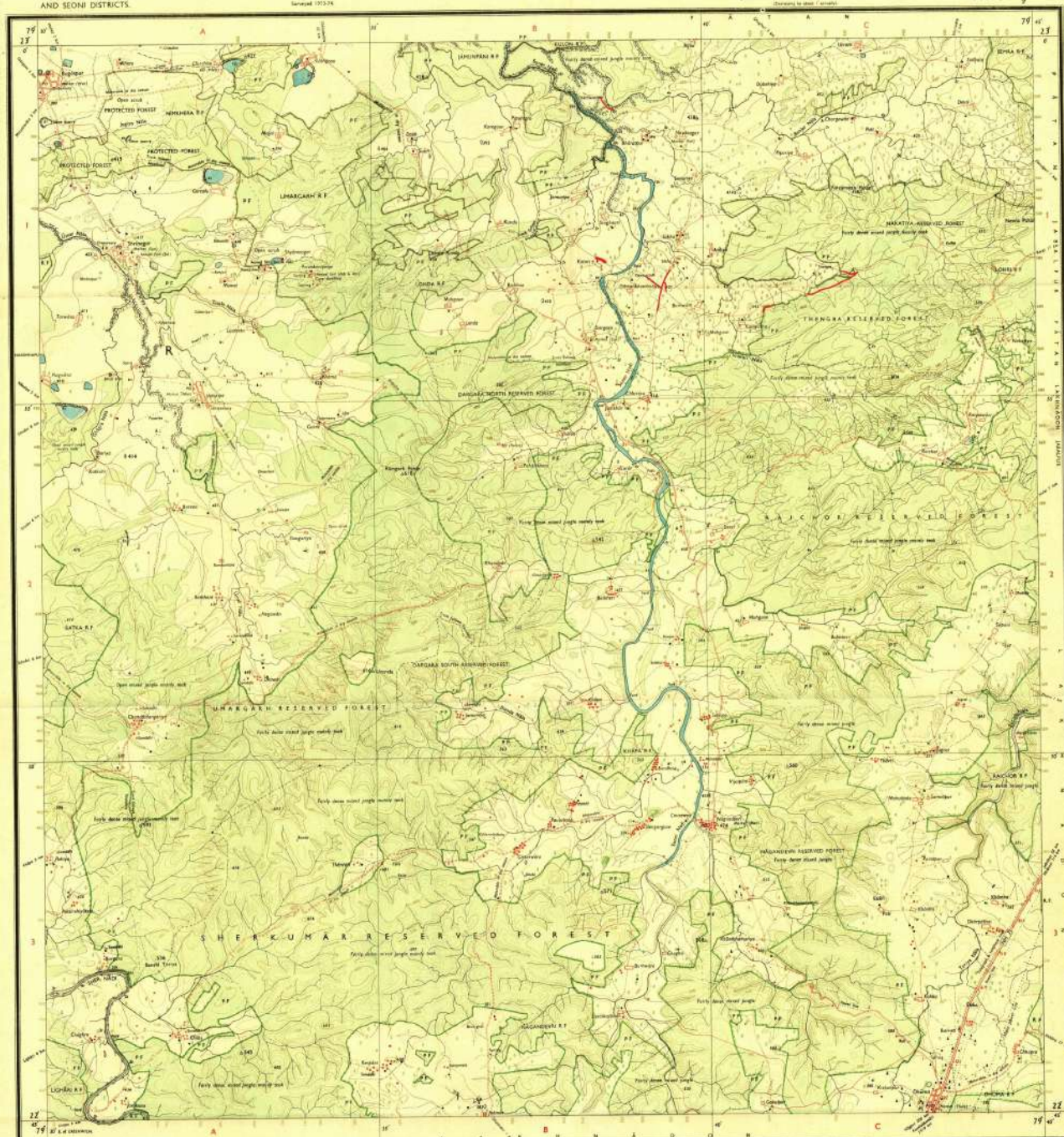
100
 100
 100

Item	Unit	Quantity	Unit Price	Total Price
1.000	kg	1.000	1.000	1.000
2.000	kg	2.000	2.000	2.000
3.000	kg	3.000	3.000	3.000
4.000	kg	4.000	4.000	4.000
5.000	kg	5.000	5.000	5.000
6.000	kg	6.000	6.000	6.000
7.000	kg	7.000	7.000	7.000
8.000	kg	8.000	8.000	8.000
9.000	kg	9.000	9.000	9.000
10.000	kg	10.000	10.000	10.000
11.000	kg	11.000	11.000	11.000
12.000	kg	12.000	12.000	12.000
13.000	kg	13.000	13.000	13.000
14.000	kg	14.000	14.000	14.000
15.000	kg	15.000	15.000	15.000
16.000	kg	16.000	16.000	16.000
17.000	kg	17.000	17.000	17.000
18.000	kg	18.000	18.000	18.000
19.000	kg	19.000	19.000	19.000
20.000	kg	20.000	20.000	20.000
21.000	kg	21.000	21.000	21.000
22.000	kg	22.000	22.000	22.000
23.000	kg	23.000	23.000	23.000
24.000	kg	24.000	24.000	24.000
25.000	kg	25.000	25.000	25.000
26.000	kg	26.000	26.000	26.000
27.000	kg	27.000	27.000	27.000
28.000	kg	28.000	28.000	28.000
29.000	kg	29.000	29.000	29.000
30.000	kg	30.000	30.000	30.000
31.000	kg	31.000	31.000	31.000
32.000	kg	32.000	32.000	32.000
33.000	kg	33.000	33.000	33.000
34.000	kg	34.000	34.000	34.000
35.000	kg	35.000	35.000	35.000
36.000	kg	36.000	36.000	36.000
37.000	kg	37.000	37.000	37.000
38.000	kg	38.000	38.000	38.000
39.000	kg	39.000	39.000	39.000
40.000	kg	40.000	40.000	40.000
41.000	kg	41.000	41.000	41.000
42.000	kg	42.000	42.000	42.000
43.000	kg	43.000	43.000	43.000
44.000	kg	44.000	44.000	44.000
45.000	kg	45.000	45.000	45.000
46.000	kg	46.000	46.000	46.000
47.000	kg	47.000	47.000	47.000
48.000	kg	48.000	48.000	48.000
49.000	kg	49.000	49.000	49.000
50.000	kg	50.000	50.000	50.000
51.000	kg	51.000	51.000	51.000
52.000	kg	52.000	52.000	52.000
53.000	kg	53.000	53.000	53.000
54.000	kg	54.000	54.000	54.000
55.000	kg	55.000	55.000	55.000
56.000	kg	56.000	56.000	56.000
57.000	kg	57.000	57.000	57.000
58.000	kg	58.000	58.000	58.000
59.000	kg	59.000	59.000	59.000
60.000	kg	60.000	60.000	60.000
61.000	kg	61.000	61.000	61.000
62.000	kg	62.000	62.000	62.000
63.000	kg	63.000	63.000	63.000
64.000	kg	64.000	64.000	64.000
65.000	kg	65.000	65.000	65.000
66.000	kg	66.000	66.000</	

Copyright © 1974 by McGraw-Hill, Inc.
All rights reserved.

REFER TO THIS MAP AS : 1:50,000
SHEET 55 M/16 FIRST EDITION
INDIA

Pipeline marked in red

[illegible]

Input to filter:

$\frac{10}{0.5}$	$\frac{10}{1.2}$	$\frac{10}{1.8}$
$\frac{10}{1}$	$\frac{10}{1.5}$	$\frac{10}{1.5}$
$\frac{10}{1}$	$\frac{10}{1.2}$	$\frac{10}{1.4}$

Published under the direction of Major-General K. L. Atwood MBE, MC, DSO, FRS, FRSE, FRGS, MA(St), BA(Ed), Surgeon General's Office

1:50,000

HEIGHTS & CONTOURS IN METRES

1. Major fisheries are shown to have either
they generally decline over time.

2. Declined areas are colored pink.

3. The density increases of trout if
observed or increased trawling and harvest by
great amounts.

4. Declined are approximately
A regular height, the represent the
approximate height, is shown below the
the top bottom of a steep slope.

5. Increased areas are colored pink, increased
from and some regulation and in trout, but
generally increased trout and in trout.

* Significantly different from control

Disputed boundary in square C/3 between (plague) and (Soc) Districts and main power line in square C/3 have been cleared as a result of verification. Survey carried out during 1979-80.

Portion of District boundary between (plague) and (Soc) Districts in square C/3 has not been verified by the District authorities concerned.

Proposed Fences boundaries have been shown as present and by the local officials on the ground have been verified by the District local authorities.



General Manager
M. P. Id Nigam Marudhi

[illegible]

© GOVERNMENT OF INDIA COPYRIGHT, 1964

REFER TO THIS MAP AS - 1:50,000
SHEET 55 N/9 FIRST EDITION

Pipeline marked in red

FIRST EDITION

—Salmon 1974-75.

Magnetic Variation from True North about 7° West in 1972
(Decrease in declination)

No. 55-N



Pipeline marked in red

INDIA.

APPENDIX
 10000 General Highway No. 1