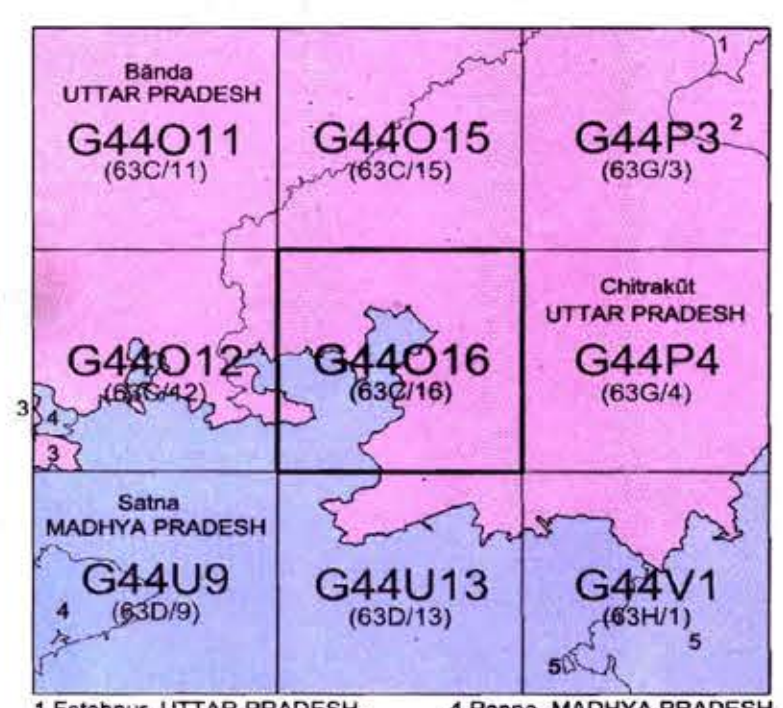


No. G44O16
Scale 1:50,000



1 Fatehpur, UTTAR PRADESH.
2 Kaushambi, UTTAR PRADESH.
3 Banda, UTTAR PRADESH.
4 Panna, MADHYA PRADESH.
5 Rewa, MADHYA PRADESH.

भारतीय सर्वेक्षण विभाग
SURVEY OF INDIA

1st Edition 2010. Price: Rs. 70/-

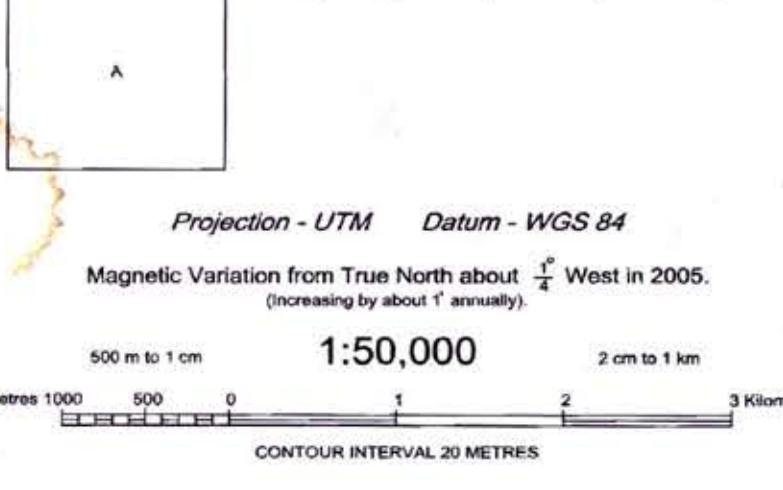
- CONVENTIONAL SYMBOLS
- Express highway with toll with bridge with distance stone
 - Roads, metalled according to importance
 - Roads, double cartway according to importance
 - Unmetalled road. Cart-track. Pack-track with pass. Foot path
 - Streams with track in bed. Undefined Canal
 - Dams: masonry or rock filled, earthenwork. Weir
 - River dry with water channel, with island & rocks. Tidal river
 - Submerged rocks. Shoal. Swamp. Reeds
 - Wells: lined, unlined. Tube-well. Spring. Tank. Perennial; dry
 - Embankments: road or rail; bank. Broken ground
 - Railways, broad gauge: double, single with station; under constr.
 - Railways, other gauges: double, single with distance stone; do
 - Mineral line or tramway. Kin. Cutting with tunnel
 - Contours with sub-features. Rocky slopes. Cliffs
 - Sand features (1) flat. (2) sand-hills (permanent). (3) dunes (shifting)
 - Towns or Villages: inhabited, deserted. Fort
 - Huts: permanent; temporary. Tower. Antiquities
 - Temple. Chhatra. Church. Mosque. Jogh. Tomb. Graves
 - Lighthouse. Lightship. Buoy: lighted, unlighted. Anchorage
 - Mine. Vine on trellis. Grass. Scrub
 - Palms: palmyra; other. Plantain. Conifer. Bamboo. Other trees
 - Areas: cultivated; wooded. Surveyed tree
 - Boundary, international
 - state: demarcated; undemarcated
 - district: subdivision; tahsil or block; forest
 - Boundary pillars: surveyed; unlocated
 - Heights, triangulated; station; point; approximate
 - BM 63-3. BM 63-1
 - Post office. Telegraph office. Overhead tank
 - Rail house or inspection bungalow. Circuit house. Police station
 - Camping ground. Forest: reserved; protected
 - Spaced names: administrative; locality or tribal
 - Hospital. Dispensary. Veterinary. Hospital / Dispensary
 - Aerodrome. Helipad. Tourist site
 - Power line: with pylons surveyed; with poles unsurveyed

Legend
Proposed Non Forest
Land for CA Plantation

REFERENCE
NH 76 National Highway No. 76

NOTES :-
Heights are in metres and above Indian mean sea level.
Contours are approximate.
A relative height, e.g. 100, represents the approximate height, in metres, between the top and bottom of a steep slope.
The kilometre stone numbers along roads and railways are shown in start type e.g. "5" whereas milestone numbers are shown in upright type e.g. "5".
Forest boundaries in this sheet have been surveyed as pointed out by the Forest officials and are not demarcated in some cases.
Tanks, shown dry in this area, usually contain water from July to March.
The common boundaries of the Reserved and Protected Forests have not been shown for want of reliable information.
The state boundary between Madhya Pradesh and Uttar Pradesh States has been surveyed as pointed out by the local officials on the ground but has yet to be verified by the Madhya Pradesh Government.

COMPILED INDEX
A. Surveyed during 1987-88. Updated for major details during 2005-06.



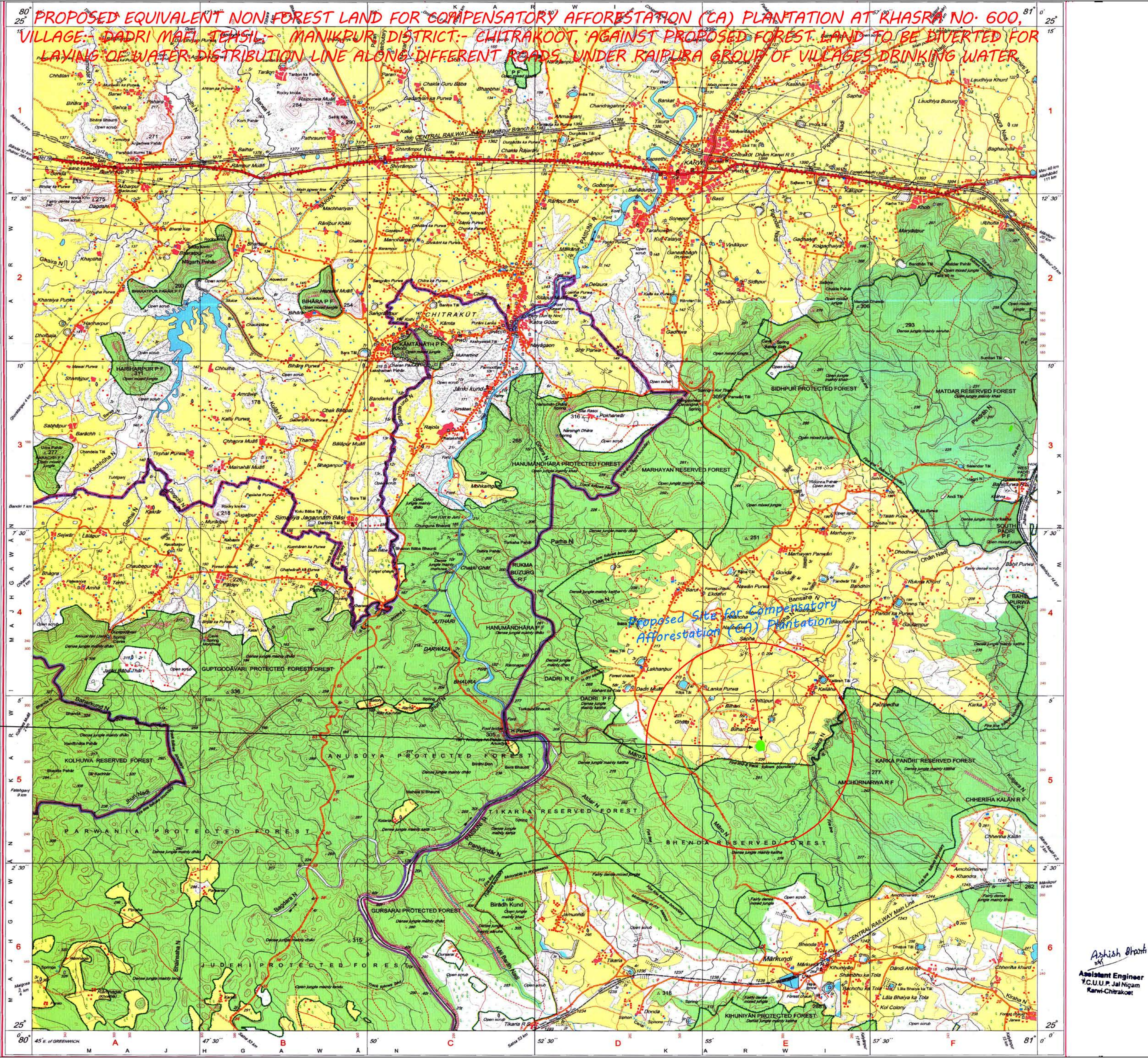
Projection - UTM Datum - WGS 84
Magnetic Variation from True North about 1/2° West in 2005.
(Increasing by about 1' annually)

500 m to 1 cm
1:50,000
2 cm to 1 km

CONTOUR INTERVAL 20 METRES

For further details about this map, please contact
Director
East Uttar Pradesh Geo-Spatial Data Centre
Survey of India
B-2 Block, 2nd Floor, PICUP Bhawan, Gomti Nagar, Lucknow.
Fax: 0522 - 2720634

WEBSITE - www.surveyofindia.gov.in



Ashish Shrivastava
Assistant Engineer
T.C.U.U.P. Jai Nigam
Karni-Chitrakoot