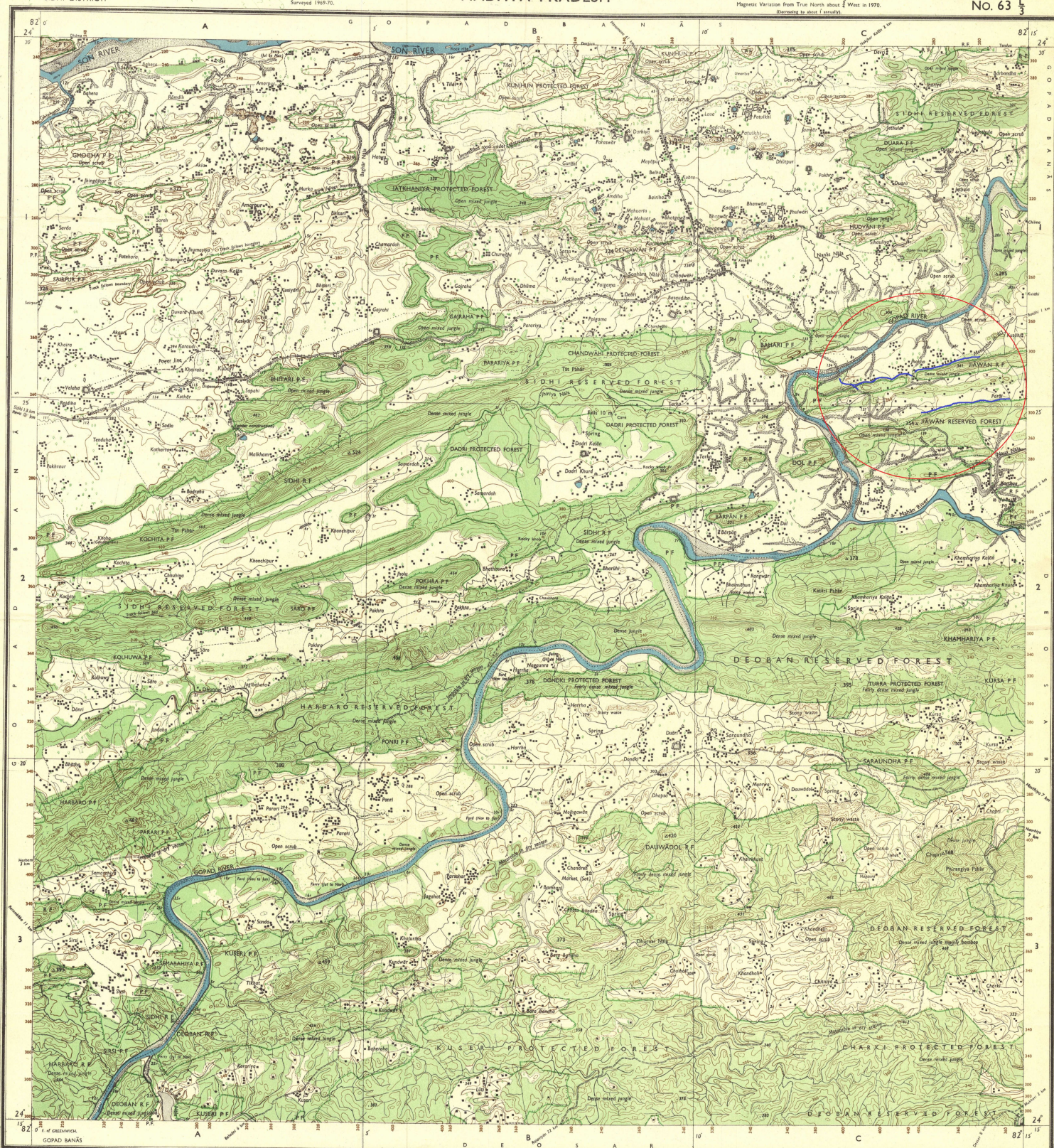


SIDHI DISTRICT.

Surveyed 1969-70



Rev. No. 5646 NOV 75 (C.C.4)-1 (312337)-812 78-5706 J.4

Published under the direction of Dr. Hari Narain, M.Sc., D.Phil., Ph.D., Surveyor General of India,
1975

1450 000

HEIGHTS & CONTOURS IN METRES
CONTOUR INTERVAL 20 METRES

*Water features are shown in blue where they generally contain water.
*Cultivated areas are coloured yellow.
The exterior boundaries of areas of Reserved or Protected Forests are shown by green ribands.

* Not applicable.

The kilometre stone numbers along roads are shown in slant type, e.g. '5' whereas milestone numbers are shown in upright type, e.g. '5'.

Administrative Index

510H

Towns or Villages Inhabited		Fort		Hut		Police station		Post office		Telegraph office		Combined office		Police station		Post office		Telegraph office		Combined office		Police station		Post office		Telegraph office		Combined office		Police station		Post office		Telegraph office		Combined office			
1	2	3	4	5	6	7	8	9	10	11	12	13	14	15	16	17	18	19	20	21	22	23	24	25	26	27	28	29	30	31	32	33	34	35	36	37	38	39	40
1	2	3	4	5	6	7	8	9	10	11	12	13	14	15	16	17	18	19	20	21	22	23	24	25	26	27	28	29	30	31	32	33	34	35	36	37	38	39	40
1	2	3	4	5	6	7	8	9	10	11	12	13	14	15	16	17	18	19	20	21	22	23	24	25	26	27	28	29	30	31	32	33	34	35	36	37	38	39	40
1	2	3	4	5	6	7	8	9	10	11	12	13	14	15	16	17	18	19	20	21	22	23	24	25	26	27	28	29	30	31	32	33	34	35	36	37	38	39	40
1	2	3	4	5	6	7	8	9	10	11	12	13	14	15	16	17	18	19	20	21	22	23	24	25	26	27	28	29	30	31	32	33	34	35	36	37	38	39	40
1	2	3	4	5	6	7	8	9	10	11	12	13	14	15	16	17	18	19	20	21	22	23	24	25	26	27	28	29	30	31	32	33	34	35	36	37	38	39	40
1	2	3	4	5	6	7	8	9	10	11	12	13	14	15	16	17	18	19	20	21	22	23	24	25	26	27	28	29	30	31	32	33	34	35	36	37	38	39	40
1	2	3	4	5	6	7	8	9	10	11	12	13	14	15	16	17	18	19	20	21	22	23	24	25	26	27	28	29	30	31	32	33	34	35	36	37	38	39	40
1	2	3	4	5	6	7	8	9	10	11	12	13	14	15	16	17	18	19	20	21	22	23	24	25	26	27	28	29	30	31	32	33	34	35	36	37	38	39	40
1	2	3	4	5	6	7	8	9	10	11	12	13	14	15	16	17	18	19	20	21	22	23	24	25	26	27	28	29	30	31	32	33	34	35	36	37	38	39	40
1	2	3	4	5	6	7	8	9	10	11	12	13	14	15	16	17	18	19	20	21	22	23	24	25	26	27	28	29	30	31	32	33	34	35	36	37	38	39	40
1	2	3	4	5	6	7	8	9	10	11	12	13	14	15	16	17	18	19	20	21	22	23	24	25	26	27	28	29	30	31	32	33	34	35	36	37	38	39	40
1	2	3	4	5																																			

GOVERNMENT OF INDIA COPYRIGHT, 1977
Price: Five Rupees.



Roads metalled according to importance; distance stated
 unmetalled; do do bridge
 Cart-track: Path-track and pass. Foot-path with bridge.
 Bridges: with stone, masonry, Caumery, Ford or Ferry.
 Wells: open, covered, in tank, in pond, in tank.
 Dams: masonry or of mud and agave, Weir.
 River banks: stalling; steep 3, 5, 10, more than 10 metres.
 dry with water channels; with islands; narrow tidal river.
 Reinforced masonry, Stone, Mason, Reeds.
 Wells: open, covered, in tank, in pond, in tank, Cylindrical, Dry
 Embankments: road or rail track, Bridge ground.
 Railway: broad gauge, single with station, over, concrete.
 other gauges: 1, 2, 3, 4, 5, 6, 7, 8, 9, 10, 11, 12, 13, 14, 15, 16, 17, 18, 19, 20, 21, 22, 23, 24, 25, 26, 27, 28, 29, 30, 31, 32, 33, 34, 35, 36, 37, 38, 39, 40, 41, 42, 43, 44, 45, 46, 47, 48, 49, 50, 51, 52, 53, 54, 55, 56, 57, 58, 59, 60, 61, 62, 63, 64, 65, 66, 67, 68, 69, 70, 71, 72, 73, 74, 75, 76, 77, 78, 79, 80, 81, 82, 83, 84, 85, 86, 87, 88, 89, 90, 91, 92, 93, 94, 95, 96, 97, 98, 99, 100, 101, 102, 103, 104, 105, 106, 107, 108, 109, 110, 111, 112, 113, 114, 115, 116, 117, 118, 119, 120, 121, 122, 123, 124, 125, 126, 127, 128, 129, 130, 131, 132, 133, 134, 135, 136, 137, 138, 139, 140, 141, 142, 143, 144, 145, 146, 147, 148, 149, 150, 151, 152, 153, 154, 155, 156, 157, 158, 159, 160, 161, 162, 163, 164, 165, 166, 167, 168, 169, 170, 171, 172, 173, 174, 175, 176, 177, 178, 179, 180, 181, 182, 183, 184, 185, 186, 187, 188, 189, 190, 191, 192, 193, 194, 195, 196, 197, 198, 199, 200, 201, 202, 203, 204, 205, 206, 207, 208, 209, 210, 211, 212, 213, 214, 215, 216, 217, 218, 219, 220, 221, 222, 223, 224, 225, 226, 227, 228, 229, 230, 231, 232, 233, 234, 235, 236, 237, 238, 239, 240, 241, 242, 243, 244, 245, 246, 247, 248, 249, 250, 251, 252, 253, 254, 255, 256, 257, 258, 259, 260, 261, 262, 263, 264, 265, 266, 267, 268, 269, 270, 271, 272, 273, 274, 275, 276, 277, 278, 279, 280, 281, 282, 283, 284, 285, 286, 287, 288, 289, 290, 291, 292, 293, 294, 295, 296, 297, 298, 299, 300, 301, 302, 303, 304, 305, 306, 307, 308, 309, 310, 311, 312, 313, 314, 315, 316, 317, 318, 319, 320, 321, 322, 323, 324, 325, 326, 327, 328, 329, 330, 331, 332, 333, 334, 335, 336, 337, 338, 339, 340, 341, 342, 343, 344, 345, 346, 347, 348, 349, 350, 351, 352, 353, 354, 355, 356, 357, 358, 359, 360, 361, 362, 363, 364, 365, 366, 367, 368, 369, 370, 371, 372, 373, 374, 375, 376, 377, 378, 379, 380, 381, 382, 383, 384, 385, 386, 387, 388, 389, 390, 391, 392, 393, 394, 395, 396, 397, 398, 399, 400, 401, 402, 403, 404, 405, 406, 407, 408, 409, 410, 411, 412, 413, 414, 415, 416, 417, 418, 419, 420, 421, 422, 423, 424, 425, 426, 427, 428, 429, 430, 431, 432, 433, 434, 435, 436, 437, 438, 439, 440, 441, 442, 443, 444, 445, 446, 447, 448, 449, 450, 451, 452, 453, 454, 455, 456, 457, 458, 459, 460, 461, 462, 463, 464, 465, 466, 467, 468, 469, 470, 471, 472, 473, 474, 475, 476, 477, 478, 479, 480, 481, 482, 483, 484, 485, 486, 487, 488, 489, 490, 491, 492, 493, 494, 495, 496, 497, 498, 499, 500, 501, 502, 503, 504, 505, 506, 507, 508, 509, 510, 511, 512, 513, 514, 515, 516, 517, 518, 519, 520, 521, 522, 523, 524, 525, 526, 527, 528, 529, 530, 531, 532, 533, 534, 535, 536, 537, 538, 539, 540, 541, 542, 543, 544, 545, 546, 547, 548, 549, 550, 551, 552, 553, 554, 555, 556, 557, 558, 559, 560, 561, 562, 563, 564, 565, 566, 567, 568, 569, 570, 571, 572, 573, 574, 575, 576, 577, 578, 579, 580, 581, 582, 583, 584, 585, 586, 587, 588, 589, 590, 591, 592, 593, 594, 595, 596, 597, 598, 599, 600, 601, 602, 603, 604, 605, 606, 607, 608, 609, 610, 611, 612, 613, 614, 615, 616, 617, 618, 619, 620, 621, 622, 623, 624, 625, 626, 627, 628, 629, 630, 631, 632, 633, 634, 635, 636, 637, 638, 639, 640, 641, 642, 643, 644, 645, 646, 647, 648, 649, 650, 651, 652, 653, 654, 655, 656, 657, 658, 659, 660, 661, 662, 663, 664, 665, 666, 667, 668, 669, 670, 671, 672, 673, 674, 675, 676, 677, 678, 679, 680, 681, 682, 683, 684, 685, 686, 687, 688, 689, 690, 691, 692, 693, 694, 695, 696, 697, 698, 699, 700, 701, 702, 703, 704, 705, 706, 707, 708, 709, 710, 711, 712, 713, 714, 715, 716, 717, 718, 719, 720, 721, 722, 723, 724, 725, 726, 727, 728, 729, 730, 731, 732, 733, 734, 735, 736, 737, 738, 739, 740, 741, 742, 743, 744, 745, 746, 747, 748, 749, 750, 751, 752, 753, 754, 755, 756, 757, 758, 759, 760, 761, 762, 763, 764, 765, 766, 767, 768, 769, 770, 771, 772, 773, 774, 775, 776, 777, 778, 779, 780, 781, 782, 783, 784, 785, 786, 787, 788, 789, 790, 791, 792, 793, 794, 795, 796,

Index to Sheets

$62\frac{1}{4}$	$62\frac{1}{2}$	$62\frac{3}{4}$
$62\frac{1}{2}$	$63\frac{1}{4}$	$62\frac{3}{4}$
$62\frac{3}{4}$	$63\frac{1}{2}$	$63\frac{3}{4}$

500 m to 1 km 1: 50,000 2 cm to 1 km

HEIGHTS & CONTOURS IN METRES

CONTOUR INTERVAL 20 METRES

* Water features are shown in blue where they generally contain water.
* Cultivated areas are coloured yellow.
The exterior boundaries of areas of Reserved or Protected Forests are shown by green ribands.

7421 326

KARUR HILLS form part of the VINDHYA MOUNTAINS.

Administrative Index



1. BEWA. H.P.

[illegible]

MADHYA PRADESH

Magnetic Variation from True North about $\frac{3}{4}^{\circ}$ West in 1970.
(Decreases by about 1' annually)



Pos. No. 3442 (647) R.C. 411-31-3331 77-7707-8
 Reads metalized according to importance; distance place
 unsettled; do. bridge
 Art-track. Peak-track and pass. Four-path with bridge.
 Bridges with plain wheel. Causeway. Ford or Ferry
 Causeway with track in boat square
 Dam: masonry or rock walled channel. Weir
 River banks: shading: steep. 3 m. to 10 m. over 5 m.
 dry with stone: channel with island & rock field
 Shading: 10 m. to 100 m. over 100 m.
 Embankment: lined. Tunnel. Tube-well. Spring. Trench: perennial dry.
 Wells: lined or not / rail, track. Broken ground
 Bridge: broad-gauge bridge with station under bridge
 Causeway: broad-gauge bridge with station under bridge
 Mineral line or tramway. Telegraph line. Guttering with tunnel
 Causeway with sub-stations. Rocky slopes. Cliffs
 Sand. Natural (oil) sand hills and forests (oil) standing stones

Index to Sheets

$63\frac{1}{2}$	$63\frac{1}{4}$	$63\frac{1}{16}$
$63\frac{1}{3}$	$63\frac{1}{9}$	$63\frac{1}{11}$
$63\frac{1}{4}$	$63\frac{1}{8}$	$63\frac{1}{12}$

500 m to 1 cm

1:50,000

HEIGHTS & CONTOURS IN METRES
CONTOUR INTERVAL 20 METRES

* Cultivated areas are coloured yellow.
The exterior boundaries of areas of Reserved or Protected Forests are shown by green ribands.

Contours are approximate.
A relative height, Δr , represents the approximate height, in metres, between the top and bottom of a steep slope.
Wooded areas are coloured green. Scattered trees and other vegetation are in green, but

* Not applicable.

The kilometre stone numbers along roads and tracks are shown in slant type, e.g. '5' whereas milestone numbers are shown in upright type, e.g. '5'.

Administrative Index

Presence or Absence of Key DRI (Presence/Status or Subtype or Issue)			
Towns or Villages (Inhabited/Deserted Fort)			
State/paramilitary/Temporary Towns/Antiquities	++	+	++
Temple, Church, Mosque, Shrine, Dargah, etc.	+	+	+
Lighthouse/Lighthouse Bungalows/Inhabited Anchorage			
Mine, Vow or trails, Grass, Scrub		M	
Plants: palm/orchid/Platanus/Clonal/Bamboo/Other trees			
Boundary: international	+	+	+
- domestic	+	+	+
- district/subdivision/camp or tribal forest	+	+	+
Boundary pillars: surveyed, isolated, village trijunction			
Height/triangulation station, point, approximate	+	200	200
Bench mark/Godwin's triangle, canal		BM 433	BM 433
Police station, Police station, Police station			to PG
Bungalows old or new/Inhabited, Road-house	DB	DB (Cont)	AK (PG)
Circuit house/Camping ground/Forest: reserved, protected	CH	CH	AK PG
Spaced name: administrative, locality or place	KIKRI		NAGA

© GOVERNMENT OF INDIA COPYRIGHT, 1975.
Price: Five Rupees.

REFER TO THIS MAP AS :- 1:50,000
SHEET 63 L/7 FIRST EDITION
INDIA

MADHYA PRADESH
UTTAR PRADESH

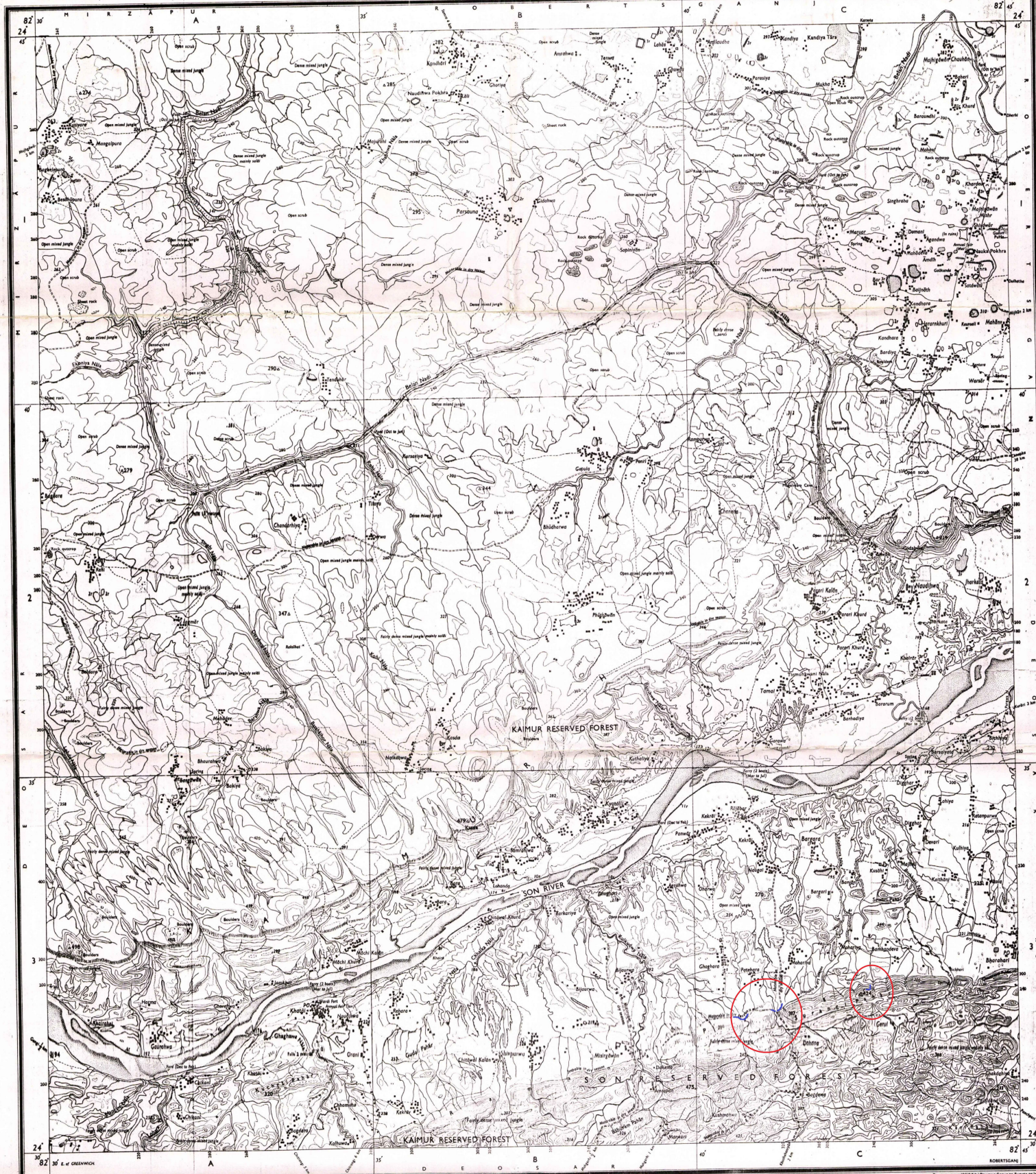
FIRST EDITION

Magnetic Variation from True North about 1° West in 1970.
(Decreasing by about 1' annually)

No. 63 L/10

SIDHI DISTRICT.
MIRZAPUR DISTRICT.

Surveyed 1966-67



Published under the direction of Brigadier J.A.T. Datta, S.A. (Hindi), D.S. (Hindi), M.L. (Hindi), and S. (Hindi), Survey of India.

1:50,000

HEIGHTS & CONTOURS IN METRES

CONTOUR INTERVAL 20 METRES

Water features are shown in blue where they generally contain water. Contour lines are colored yellow. The interior boundaries of areas of Reserved or Protected Forests are shown by green lines.

Contours are approximate. A relative height, if represented by the top and bottom of a steep slope. Wooded areas are colored green. Scattered trees and other vegetation are in green, but prominent surveyed trees are in black.

Forest boundaries in this sheet have not been shown for want of reliable information. Permission to use the forest tract is required from the forest authorities. Trees, shown dry in this area, usually contain water from July to March. Cultivation is periodic and dependent on rainfall.



Administrative Index

Points of Interest (as per Survey of India)

- Temples or Villages inhabited by Scheduled Tribes
- Habitat of Scheduled Tribes
- Temples, Churches, Mosques, Igars, Tanks, Dams
- Light House, Lighthouse, Range, Signal, Post Office, Anchorage
- Mine, Vind, or Wells, Green, Scrub
- Palms, peeples, other trees, Panchayat, Cattle, Buffalo, Other Uses
- Boundary, International
- State demarcation, undemarcated
- district, sub-division, or taluk, forest
- Boundary, private, reserved, undemarcated, village, village
- Habitat, undemarcated, season, point, approximate
- Beach, mark, private, temporary, sand
- Post office, telephone office, Combined office, Police station, P.O.
- Bungalow, old or temporary, inspection, Post house
- Circuit house, Canning Ground, Reserve, reserved, private
- Reserved, reserve, administrative, locality, or tribal

Scale 1:50,000 (IND. 37-1-33,333) 713 78-1504 81

Scale marked according to reference, distance scale

- unmarked, in
- Cart-track, Path-track and pass, Foot-path with bridge
- Bridge with stone, concrete, Causeway, Ford or Ferry
- Stones, wire track in low, undemarcated, Canal
- Dams, masonry or other fixed, earthen, Weir
- River, water, flowing, 2 to 3 metres, over 4 metres
- dry with water channel, with island & rock, Tidal river
- Submerged rocks, Shoal, Swamp, Reeds
- Muddy, land, raised, lake, and Spring, Tanks, generally 10 to 15
- Embankment, road or rail, low, Broken ground
- Revolving bridge, double, single, with station, under, over
- other bridges, in, in, in, in, in, in, in, in, in, in
- Light railway or tramway, Trolley path line, Cutting, with tunnel
- Cuttings, with cut, without, Trolley, station, C.O.R.
- Sand, dunes, hills, and other, and, and, and, and, and, and

© Edition 1970
[Printed Edition on 1 inch scale: 10, 24, 26, 28, 30, 32, 34, 36, 38, 40, 42, 44, 46, 48, 50, 52, 54, 56, 58, 60, 62, 64, 66, 68, 70, 72, 74, 76, 78, 80, 82, 84, 86, 88, 90, 92, 94, 96, 98, 100]

REFER TO THIS MAP AS - 1:50,000
SHEET 63 L/10 FIRST EDITION
INDIA

GOVERNMENT OF INDIA COPYRIGHT, 1970
Price Five Rupees

MADHYA PRADESH
UTTAR PRADESH

FIRST EDITION

INDIA
REFER TO THIS MAP AS - 1:50,000
SHEET 63 L/11 FIRST EDITION

No. 63

SIDHI DISTRICT.
MIRZAPUR DISTRICT.

Surveyed 1966-67.

Magnetic Variation from True North about 6° West in 1970.
(Increasing by about 1° annually)



Revised 1972
Previous Edition in 1:50,000 scale (for Madhya Pradesh) 1955.

Index to Sheets

63 L	63 M	63 N
63 O	63 P	63 Q
63 R	63 S	63 T

500 m to 1 km
Scale 1:50,000

1:50,000

HEIGHTS & CONTOURS IN METRES
CONTOUR INTERVAL 20 METRES

* Water features are shown in blue where they generally contain water.
* Contour lines are shown in brown, with the top and bottom of a steep slope indicated by a series of short dashes.
* Contour lines are shown in brown, with the top and bottom of a steep slope indicated by a series of short dashes.

* Not applicable.

Administrative Index

SIDHI
MIRZAPUR

Points of Interest
Towns or Villages (shown in blue)
Railway stations (shown in blue)
Police stations (shown in blue)
Post offices (shown in blue)
Government offices (shown in blue)
Religious places (shown in blue)
Educational institutions (shown in blue)
Health centres (shown in blue)
Social welfare centres (shown in blue)
Public works (shown in blue)
Other (shown in blue)

REFER TO THIS MAP AS - 1:50,000
SHEET 63 L/11 FIRST EDITION

INDIA

GOVERNMENT OF INDIA COPYRIGHT 1970
Printed in India