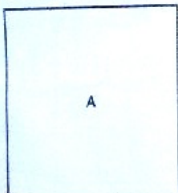


Name Of Work:- Construction of 33/11 KV Electrical Sub Center Shri Naina Devi Ji which falls in the Jurisdiction of Modar Village, Tehsil Shri Naina Devi Ji at Swarghat, Bilaspur District, H.P

Heights are in metres and above Indian mean sea level.
Cultivation is periodic and dependent on rainfall.
A relative height, &r, represents the approximate height, in metres, between the top and bottom of a steep slope.
The exterior boundaries of Reserved or Protected Forests are shown by green ribands.
Tanks shown dry in this sheet usually contain water from July to March.
All unmetalled roads in this sheet are motorable in dry season.
A relative height e.g., &r marked along a canal indicates the height of the top of the canal embankment above the adjacent country.

COMPILATION INDEX



A. Compiled from 1:25,000 scale survey, carried out during 1983-84, Updated for major details during 2005-06.

Projection - UTM Datum - WGS 84

Magnetic Variation from True North about $1\frac{1}{4}^{\circ}$ East in 2005.
(Increasing by about 1° annually).



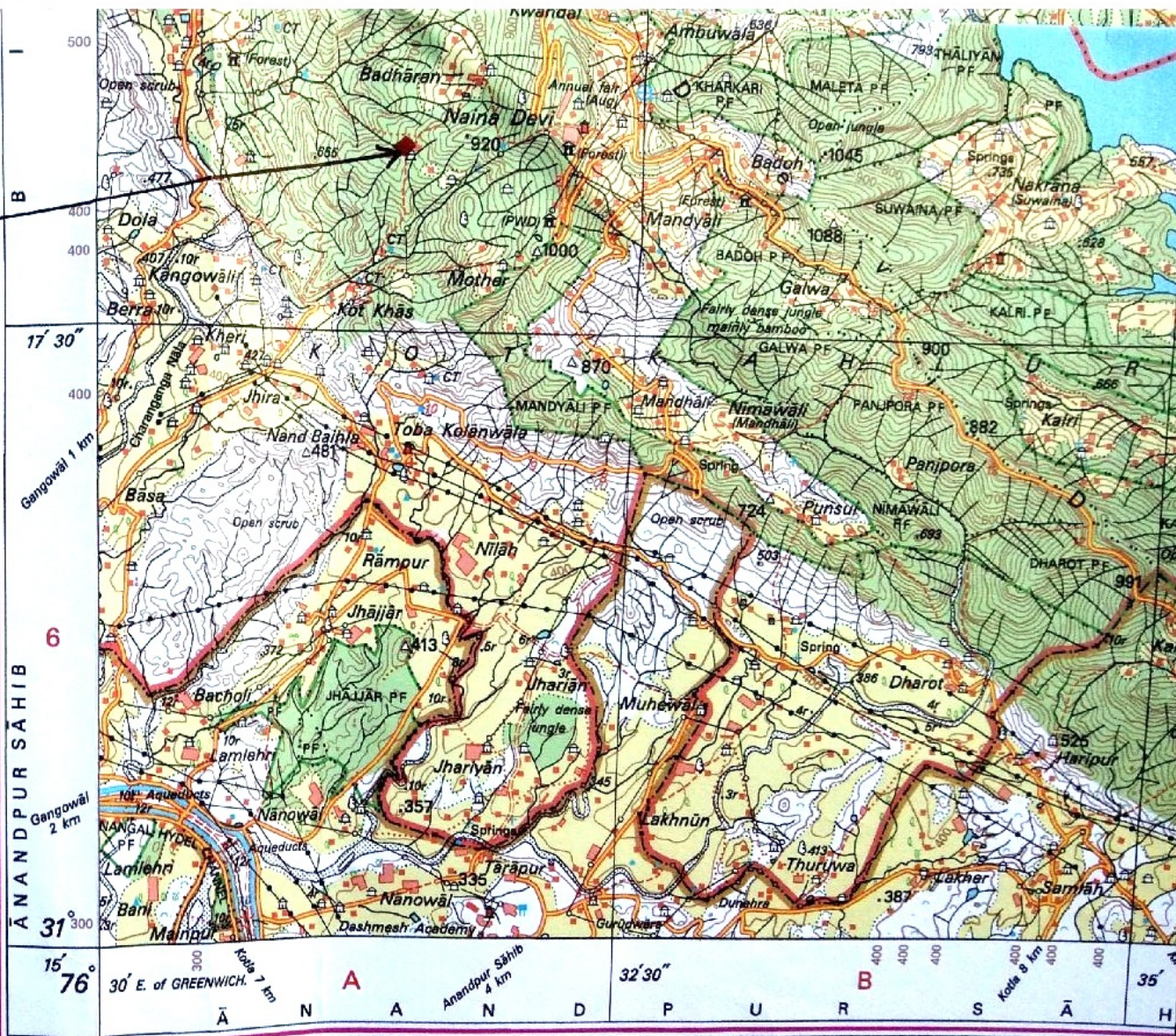
For further details about this map, please contact
Director
Himachal Pradesh Geo-Spatial Data Centre
Survey of India, Sector 32 A
Chandigarh.

WEBSITE - www.surveyofindia.gov.in

Reproduction in whole or part by any means is prohibited
without the written permission of Survey of India, the
National Mapping Agency.

GOVERNMENT OF INDIA COPYRIGHT, 2010.

Proposed Site



INDEX

■ Proposed Site

Executive Engineer
Electrical Division
H.P.S.E.B. Bilaspur (H.P.)

Assistant Engineer
Elect. Sub Division
H.P.S.E.B. Ltd. Bilaspur

Divisional Forest Officer
Bilaspur Forest Division,
Distt. Bilaspur (H.P.)