

KANGRA DISTRICT.  
GURDASPUR & HOSHIARPUR DISTRICTS.

Surveyed 1967-69.  
(After see footnotes)

# HIMACHAL PRADESH, PUNJAB

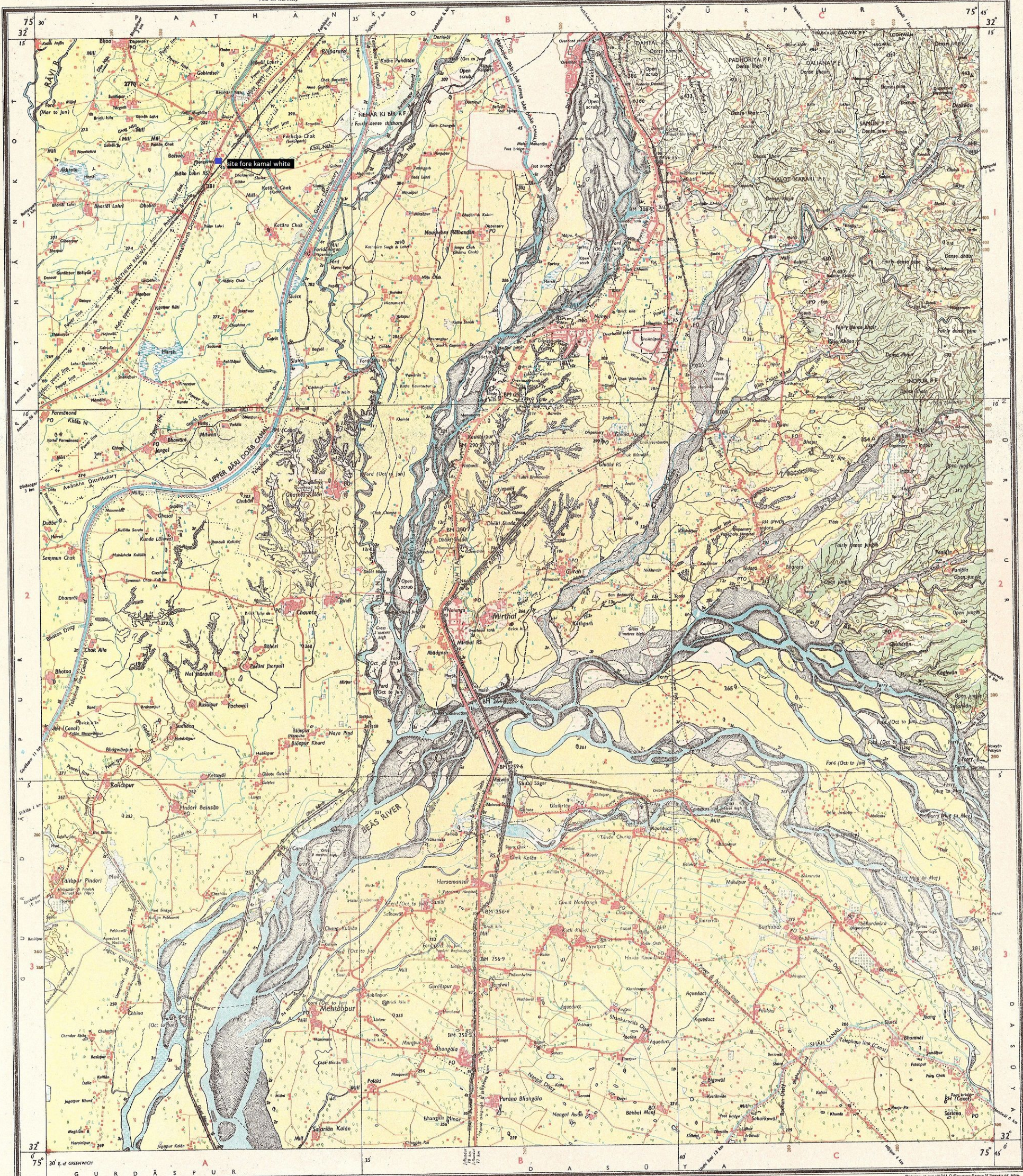
Magnetic Variation from True North about  $1\frac{1}{2}^{\circ}$  East in 1970.  
(Decreasing by about  $1'$  annually)

INDIA  
REFER TO THIS MAP AS - 1:50,000  
SHEET 43 P/12 FIRST EDITION

No. 43 P/12

RESTRICTED

FIRST EDITION



Index to Sheets

43 7	43 8	43 9
43 10	43 11	43 12
43 13	43 14	43 15
43 16	43 17	43 18

Scale: 1:50,000

500 m to 1 cm

500 1000 2000 3000 4000 5000 6000 7000 8000 9000 10000

Metres

Heights & Contours in Metres

Contour Interval 20 Metres

Water features are shown in blue where they generally contain water.

Cultivated areas are coloured yellow.

The exterior boundaries of areas of Reserved or Protected Forests are shown by green ribbands.

Contours are approximate.

A relative height, e.g., 40, represents the approximate height, in metres, between the top and bottom of a steep slope.

Wooded areas are coloured green. Scattered trees and other vegetation are in green, but prominent surveyed trees are in black.

\*Not applicable.

A relative height, e.g., 40, marked along a canal, indicates the height of the top of the canal embankment, above the adjacent country.

Canal distance stones are 1,000 feet apart and every fifth stone is shown.

Permission to use unmetalled roads and carttracks along canals is required from the Irrigation authorities.

Unmetalled roads and carttracks in this sheet are generally inoperative in dry season.

The course of the Beas River is liable to continual change.

The bridge over the Beas River has a single track for the railway and the road.

The kilometre stone numbers along roads and railways are shown in that type, e.g., '5' whereas milestone numbers are shown in upright type, e.g., '5'.

The sheet has been compiled from 1:25,000 survey carried out during 1967-69 with additions and alterations based on verification survey carried out during 1972-73.

The unmetalled roads and contours in this sheet have not been adjusted to the heights of the spirit-levelling bench-marks and may not be strictly in accordance with them.

1st Edition 1973.  
Previous Editions on 1-inch scale: 1st 1915; 2nd 1927; 3rd 1950; 4th 1959.

REFER TO THIS MAP AS - 1:50,000  
SHEET 43 P/12 FIRST EDITION

INDIA

Administrative Index

1 KANGRA, H.P.  
2 HOSHIARPUR, PUNJAB.

Points of the 101st, 102nd, 103rd, 104th, 105th, 106th, 107th, 108th, 109th, 110th, 111th, 112th, 113th, 114th, 115th, 116th, 117th, 118th, 119th, 120th, 121st, 122nd, 123rd, 124th, 125th, 126th, 127th, 128th, 129th, 130th, 131st, 132nd, 133rd, 134th, 135th, 136th, 137th, 138th, 139th, 140th, 141st, 142nd, 143rd, 144th, 145th, 146th, 147th, 148th, 149th, 150th, 151st, 152nd, 153rd, 154th, 155th, 156th, 157th, 158th, 159th, 160th, 161st, 162nd, 163rd, 164th, 165th, 166th, 167th, 168th, 169th, 170th, 171st, 172nd, 173rd, 174th, 175th, 176th, 177th, 178th, 179th, 180th, 181st, 182nd, 183rd, 184th, 185th, 186th, 187th, 188th, 189th, 190th, 191st, 192nd, 193rd, 194th, 195th, 196th, 197th, 198th, 199th, 200th, 201st, 202nd, 203rd, 204th, 205th, 206th, 207th, 208th, 209th, 210th, 211st, 212th, 213th, 214th, 215th, 216th, 217th, 218th, 219th, 220th, 221st, 222nd, 223rd, 224th, 225th, 226th, 227th, 228th, 229th, 230th, 231st, 232nd, 233rd, 234th, 235th, 236th, 237th, 238th, 239th, 240th, 241st, 242nd, 243rd, 244th, 245th, 246th, 247th, 248th, 249th, 250th, 251st, 252nd, 253rd, 254th, 255th, 256th, 257th, 258th, 259th, 260th, 261st, 262nd, 263rd, 264th, 265th, 266th, 267th, 268th, 269th, 270th, 271st, 272nd, 273rd, 274th, 275th, 276th, 277th, 278th, 279th, 280th, 281st, 282nd, 283rd, 284th, 285th, 286th, 287th, 288th, 289th, 290th, 291st, 292nd, 293rd, 294th, 295th, 296th, 297th, 298th, 299th, 300th, 301st, 302nd, 303rd, 304th, 305th, 306th, 307th, 308th, 309th, 310th, 311st, 312th, 313th, 314th, 315th, 316th, 317th, 318th, 319th, 320th, 321st, 322nd, 323rd, 324th, 325th, 326th, 327th, 328th, 329th, 330th, 331st, 332nd, 333rd, 334th, 335th, 336th, 337th, 338th, 339th, 340th, 341st, 342nd, 343rd, 344th, 345th, 346th, 347th, 348th, 349th, 350th, 351st, 352nd, 353rd, 354th, 355th, 356th, 357th, 358th, 359th, 360th, 361st, 362nd, 363rd, 364th, 365th, 366th, 367th, 368th, 369th, 370th, 371st, 372nd, 373rd, 374th, 375th, 376th, 377th, 378th, 379th, 380th, 381st, 382nd, 383rd, 384th, 385th, 386th, 387th, 388th, 389th, 390th, 391st, 392nd, 393rd, 394th, 395th, 396th, 397th, 398th, 399th, 400th, 401st, 402nd, 403rd, 404th, 405th, 406th, 407th, 408th, 409th, 410th, 411st, 412th, 413th, 414th, 415th, 416th, 417th, 418th, 419th, 420th, 421st, 422nd, 423rd, 424th, 425th, 426th, 427th, 428th, 429th, 430th, 431st, 432nd, 433rd, 434th, 435th, 436th, 437th, 438th, 439th, 440th, 441st, 442nd, 443rd, 444th, 445th, 446th, 447th, 448th, 449th, 450th, 451st, 452nd, 453rd, 454th, 455th, 456th, 457th, 458th, 459th, 460th, 461st, 462nd, 463rd, 464th, 465th, 466th, 467th, 468th, 469th, 470th, 471st, 472nd, 473rd, 474th, 475th, 476th, 477th, 478th, 479th, 480th, 481st, 482nd, 483rd, 484th, 485th, 486th, 487th, 488th, 489th, 490th, 491st, 492nd, 493rd, 494th, 495th, 496th, 497th, 498th, 499th, 500th, 501st, 502nd, 503rd, 504th, 505th, 506th, 507th, 508th, 509th, 510th, 511st, 512th, 513th, 514th, 515th, 516th, 517th, 518th, 519th, 520th, 521st, 522nd, 523rd, 524th, 525th, 526th, 527th, 528th, 529th, 530th, 531st, 532nd, 533rd, 534th, 535th, 536th, 537th, 538th, 539th, 540th, 541st, 542nd, 543rd, 544th, 545th, 546th, 547th, 548th, 549th, 550th, 551st, 552nd, 553rd, 554th, 555th, 556th, 557th, 558th, 559th, 560th, 561st, 562nd, 563rd, 564th, 565th, 566th, 567th, 568th, 569th, 570th, 571st, 572nd, 573rd, 574th, 575th, 576th, 577th, 578th, 579th, 580th, 581st, 582nd, 583rd, 584th, 585th, 586th, 587th, 588th, 589th, 590th, 591st, 592nd, 593rd, 594th, 595th, 596th, 597th, 598th, 599th, 600th, 601st, 602nd, 603rd, 604th, 605th, 606th, 607th, 608th, 609th, 610th, 611st, 612th, 613th, 614th, 615th, 616th, 617th, 618th, 619th, 620th, 621st, 622nd, 623rd, 624th, 625th, 626th, 627th, 628th, 629th, 630th, 631st, 632nd, 633rd, 634th, 635th, 636th, 637th, 638th, 639th, 640th, 641st, 642nd, 643rd, 644th, 645th, 646th, 647th, 648th, 649th, 650th, 651st, 652nd, 653rd, 654th, 655th, 656th, 657th, 658th, 659th, 660th, 661st, 662nd, 663rd, 664th, 665th, 666th, 667th, 668th, 669th, 670th, 671st, 672nd, 673rd, 674th, 675th, 676th, 677th, 678th, 679th, 680th, 681st, 682nd, 683rd, 684th, 685th, 686th, 687th, 688th, 689th, 690th, 691st, 692nd, 693rd, 694th, 695th, 696th, 697th, 698th, 699th, 700th, 701st, 702nd, 703rd, 704th, 705th, 706th, 707th, 708th, 709th, 710th, 711st, 712th, 713th, 714th, 715th, 716th, 717th, 718th, 719th, 720th, 721st, 722nd, 723rd, 724th, 725th, 726th, 727th, 728th, 729th, 730th, 731st, 732nd, 733rd, 734th, 735th, 736th, 737th, 738th, 739th, 740th, 741st, 742nd, 743rd, 744th, 745th, 746th, 747th, 748th, 749th, 750th, 751st, 752nd, 753rd, 754th, 755th, 756th, 757th, 758th, 759th, 760th, 761st, 762nd, 763rd, 764th, 765th, 766th, 767th, 768th, 769th, 770th, 771st, 772nd, 773rd, 774th, 775th, 776th, 777th, 778th, 779th, 780th, 781st, 782nd, 783rd, 784th, 785th, 786th, 787th, 788th, 789th, 790th, 791st, 792nd, 793rd, 794th, 795th, 796th, 797th, 798th, 799th, 800th, 801st, 802nd, 803rd, 804th, 805th, 806th, 807th, 808th, 809th, 810th, 811st, 812th, 813th, 814th, 815th, 816th, 817th, 818th, 819th, 820th, 821st, 822nd, 823rd, 824th, 825th, 826th, 827th, 828th, 829th, 830th, 831st, 832nd, 833rd, 834th, 835th, 836th, 837th, 838th, 839th, 840th, 841st, 842nd, 843rd, 844th, 845th, 846th, 847th, 848th, 849th, 850th, 851st, 852nd, 853rd, 854th, 855th, 856th, 857th, 858th, 859th, 860th, 861st, 862nd, 863rd, 864th, 865th, 866th, 867th, 868th, 869th, 870th, 871st, 872nd, 873rd, 874th, 875th, 876th, 877th, 878th, 879th, 880th, 881st, 882nd, 883rd, 884th, 885th, 886th, 887th, 888th, 889th, 890th, 891st, 892nd, 893rd, 894th, 895th, 896th, 897th, 898th, 899th, 900th, 901st, 902nd, 903rd, 904th, 905th, 906th, 907th, 908th, 909th, 910th, 911st, 912th, 913th, 914th, 915th, 916th, 917th, 918th, 919th, 920th, 921st, 922nd, 923rd, 924th, 925th, 926th, 927th, 928th, 929th, 930th, 931st, 932nd, 933rd, 934th, 935th, 936th, 937th, 938th, 939th, 940th, 941st, 942nd, 943rd, 944th, 945th, 946th, 947th, 948th, 949th, 950th, 951st, 952nd, 953rd, 954th, 955th, 956th, 957th, 958th, 959th, 960th, 961st, 962nd, 963rd, 964th, 965th, 966th, 967th, 968th, 969th, 970th, 971st, 972nd, 973rd, 974th, 975th, 976th, 977th, 978th, 979th, 980th, 981st, 982nd, 983rd, 984th, 985th, 986th, 987th, 988th, 989th, 990th, 991st, 992nd, 993rd, 994th, 995th, 996th, 997th, 998th, 999th, 1000th, 1001st, 1002nd, 1003rd, 1004th, 1005th, 1006th, 1007th, 1008th, 1009th, 1010th, 1011st, 1012th, 1013th, 1014th, 1015th, 1016th, 1017th, 1018th, 1019th, 1020th, 1021st, 1022nd, 1023rd, 1024th, 1025th, 1026th, 1027th, 1028th, 1029th, 1030th, 1031st, 1032nd, 1033rd, 1034th, 1035th, 1036th, 1037th, 1038th, 1039th, 1040th, 1041st, 1042nd, 1043rd, 1044th, 1045th, 1046th, 1047th, 1048th, 1049th, 1050th, 1051st, 1052nd, 1053rd, 1054th, 1055th, 1056th, 1057th, 1058th, 1059th, 1060th, 1061st, 1062nd, 1063rd, 1064th, 1065th, 1066th, 1067th, 1068th, 1069th, 1070th, 1071st, 1072nd, 1073rd, 1074th, 1075th, 1076th, 1077th, 1078th, 1079th, 1080th, 1081st, 1082nd, 1083rd, 1084th, 1085th, 1086th, 1087th, 1088th, 1089th, 1090th, 1091st, 1092nd, 1093rd, 1094th, 1095th, 1096th, 1097th, 1098th, 1099th, 1100th, 1101st, 1102nd, 1103rd, 1104th, 1105th, 1106th, 1107th, 1108th, 1109th, 1110th, 1111st, 1112th, 1113th, 1114th, 1115th, 1116th, 1117th, 1118th, 1119th, 1120th, 1121st, 1122nd, 1123rd, 1124th, 1125th, 1126th, 1127th, 1128th, 1129th, 1130th, 1131st, 1132nd, 1133rd, 1134th, 1135th, 1136th, 1137th, 1138th, 1139th, 1140th, 1141st, 1142nd, 1143rd, 1144th, 1145th, 1146th, 1147th, 1148th, 1149th, 1150th, 1151st, 1152nd, 1153rd, 1154th, 1155th, 1156th, 1157th, 1158th, 1159th, 1160th, 1161st, 1162nd, 1163rd, 1164th, 1165th, 1166th, 1167th, 1168th, 1169th, 1170th, 1171st, 1172nd, 1173rd, 1174th, 1175th, 1176th, 1177th, 1178th, 1179th, 1180th, 1181st, 1182nd, 1183rd, 1184th, 1185th, 1186th, 1187th, 1188th, 1189th, 1190th, 1191st, 1192nd, 1193rd, 1194th, 1195th, 1196th, 1197th, 1198th, 1199th, 1200th, 1201st, 1202nd, 1203rd, 1204th, 1205th, 1206th, 1207th, 1208th, 1209th, 1210th, 1211st, 1212nd, 1213th, 1214th, 1215th, 1216th, 1217th, 1218th, 1219th, 1220th, 1221st, 1222nd, 1223rd, 1224th, 1225th, 1226th, 1227th, 1228th, 1229th, 1230th, 1231st, 1232nd, 1233rd, 1234th, 1235th, 1236th, 1237th, 1238th, 1239th, 1240th, 1241st, 1242nd, 1243rd, 1244th, 1245th, 1246th, 1247th, 1248th, 1249th, 1250th, 1251st, 1252nd, 1253rd, 1254th, 1255th, 1256th, 1257th, 1258th, 1259th, 1260th, 1261st, 1262nd, 1263rd, 1264th, 1265th, 1266th, 1267th, 1268th, 1269th, 1270th, 1271st, 1272nd, 1273rd, 1274th, 1275th, 1276th, 1277th, 1278th, 1279th, 1280th, 1281st, 1282nd, 1283rd, 1284th, 1285th, 1286th, 1287th, 1288th, 1289th, 1290th, 1291st, 1292nd, 1293rd, 1294th, 1295th, 1296th, 1297th, 1298th, 1299th, 1300th, 1301st, 1302nd, 1303rd, 1304th, 1305th, 1306th, 1307th, 1308th, 1309th, 1310th, 1311st, 1312nd, 1313th, 1314th, 1315th, 1316th, 1317th, 1318th, 1319th, 1320th, 1321st, 1322nd, 1323rd, 1324th, 1325th, 1326th, 1327th, 1328th, 1329th, 1330th, 1331st, 1332nd, 1333rd, 1334th, 1335th, 1336th, 1337th, 1338th, 1339th, 1340th, 1341st, 1342nd, 1343rd, 1344th, 1345th, 1346th, 1347th, 1348th, 1349th, 1350th, 1351st, 1352nd, 1353rd, 1354th, 1355th, 1356th, 1357th, 1358th, 1359th, 1360th, 1361st, 1362nd, 1363rd, 1364th, 1365th, 1366th, 1367th, 1368th, 1369th, 1370th, 1371st, 1372nd, 1373rd, 1374th, 1375th, 1376th, 1377th, 1378th, 1379th, 1380th, 1381st, 1382nd, 1383rd, 1384th, 1385th, 1386th, 1387th, 1388th, 1389th, 1390th, 1391st, 1392nd, 1393rd, 1394th, 1395th, 1396th, 1397th, 1398th, 1399th, 1400th, 1401st, 1402nd, 1403rd, 1404th, 1405th, 1406th, 1407th, 1408th, 1409th, 1410th, 1411st, 1412nd, 1413th, 1414th, 1415th, 1416th, 1417th, 1418th, 1419th, 1420th, 1421st, 1422nd, 1423rd, 1424th, 1425th, 1426th, 1427th, 1428th, 1429th, 1430th, 1431st, 1432nd, 1433rd, 1434th, 1435th, 1436th, 1437th, 1438th, 1439th, 1440th, 1441st, 1442nd, 1443rd, 1444th, 1445th, 1446th, 1447th, 1448th, 1449th, 1450th, 1451st, 1452nd, 1453rd, 1454th, 1455th, 1456th, 1457th, 1458th, 1459th, 1460th, 1461st, 1462nd, 1463rd, 1464th, 1465th, 1466th, 1467th, 1468th, 1469th, 1470th, 1471st, 1472nd, 1473rd, 1474th, 1475th, 1476th, 1477th, 1478th, 1479th, 1480th, 1481st, 1482nd, 1483rd, 1484th, 1485th, 1486th, 1487th, 1488th, 1489th, 1490th, 1491st, 1492nd, 1493rd, 1494th, 1495th, 1496th, 1497th, 1498th, 1499th, 1500th, 1501st, 1502nd, 1503rd, 1504th, 1505th, 1506th, 1507th, 1508th, 1509th, 1510th, 1511st, 1512nd, 1513th, 1514th, 1515th, 1516th, 1517th, 1518th, 1519th, 1520th, 1521st, 1522nd, 1523rd, 1524th, 1525th, 1526th, 1527th, 1528th, 1529th, 1530th, 1531st, 1532nd, 1533rd, 1534th, 1535th, 1536th, 1537th, 1538th, 1539th, 1540th, 1541st, 1542nd, 1543rd, 1544th, 1545th, 1546th, 1547th, 1548th, 1549th, 1550th, 1551st, 1552nd, 1553rd, 1554th, 1555th, 1556th, 1557th, 1558th, 1559th, 1560th, 1561st, 1562nd, 1563rd, 1564th, 1565th, 1566th, 1567th, 1568th, 1569th, 1570th, 1571st, 1572nd, 1573rd, 1574th, 1575th, 1576th, 1577th, 1578th, 1579th, 1580th, 1581st, 1582nd, 1583rd, 1584th, 1585th, 1586th, 1587th, 1588th, 1589th, 1590th, 1591st, 1592nd, 1593rd, 1594th, 1595th, 1596th, 1597th, 1598th, 1599th, 1600th, 1601st, 1602nd, 1603rd, 1604th, 1605th, 1606th, 1607th, 1608th, 1609th, 1610th, 1611st, 1612nd, 1613th, 1614th, 1615th, 1616th, 1617th, 1618th, 1619th, 1620th, 1621st, 1622nd, 1623rd, 1624th, 1625th, 1626th, 1627th, 1628th, 1629th, 1630th, 1631st, 1632nd, 1633rd, 1634th, 1635th, 1636th, 1637th, 1638th, 1639th, 1640th, 1641st, 1642nd, 1643rd, 1644th, 1645th, 1646th, 1647th, 1648th, 1649th, 1650th, 1651st, 1652nd, 1653rd, 1654th, 1655th, 1656th, 1657th, 1658th, 1659th, 1660th, 1661st, 1662nd, 1663rd, 1664th, 1665th, 1666th, 1667th, 1668th, 1669th, 1670th, 1671st, 1672nd, 1673rd, 1674th, 1675th, 1676th, 1677th, 1678th, 1679th, 1680th, 1681st, 1682nd, 1683rd, 1684th, 1685th, 1686th, 1687th, 1688th, 1689th, 1690th, 1691st, 1692nd, 1693rd, 1694th, 1695th, 1696th, 1697th, 1698th, 1699th, 1700th, 1701st, 1702nd, 1703rd, 1704th, 1705th, 1706th, 1707th, 1708th, 1709th, 1710th, 1711st, 1712nd, 1713th, 1714th, 1715th, 1716th, 1717th, 1718th, 1719th, 1720th, 1721st, 1722nd, 1723rd, 1724th, 1725th, 1726th, 1727th, 1728th, 1729th, 1730th, 1731st, 1732nd, 1733rd, 1734th, 1735th, 1736th, 1737th, 1738th, 1739th, 1740th, 1741st, 1742nd, 1743rd, 1744th, 1745th, 1746th, 1747th, 1748th, 1749th, 1750th, 1751st, 1752nd, 1753rd, 1754th, 1755th, 1756th, 1757th, 1758th, 1759th, 1760th, 1761st, 1762nd, 1763rd, 1764th, 1765th, 1766th, 1767th, 1768th, 1769th, 1770th, 1771st, 1772nd, 1773rd, 1774th, 1775th, 1776th, 1777th, 1778th, 1779th, 1780th, 1781st, 1782nd, 1783rd, 1784th, 1785th, 1786th, 1787th, 1788