

EAST NIMAR DISTRICT.

Surveyed 1977-78.

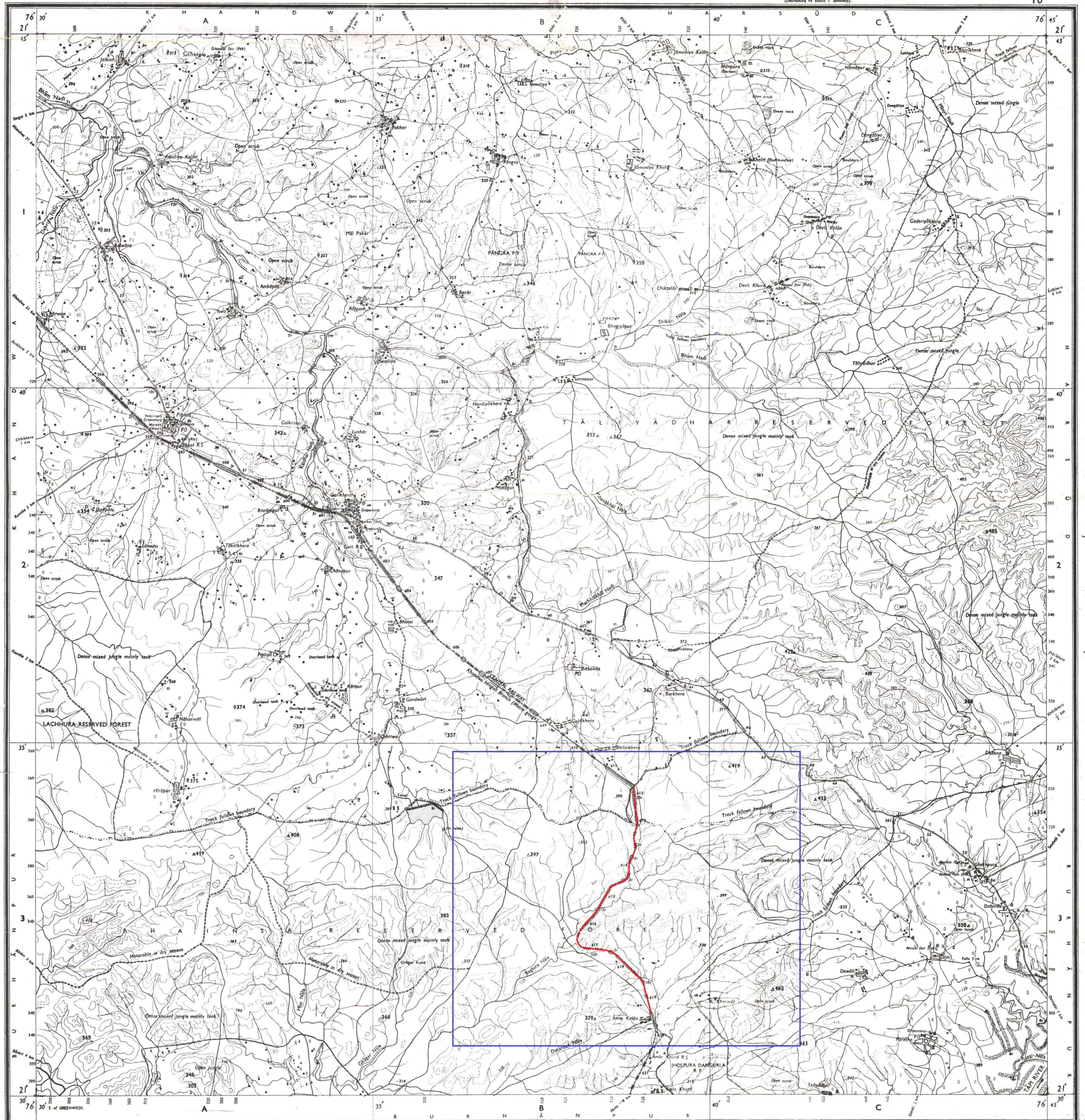
मध्य प्रदेश  
MADHYA PRADESH

FIRST EDITION

Magnetic Variation from True North about 1° West in 1975.  
(Decreasing by about 1' annually).

भारत INDIA  
REFER TO THIS MAP AS :- 1:50,000  
SHEET 55 C/10 FIRST EDITION

No. 55 C/10



Scale: 1:50,000

500 m to 1 cm

1:50,000

2 cm to 1 km

Kilometres

HEIGHTS & CONTOURS IN METRES

CONTOUR INTERVAL 20 METRES

\*Water features are shown in blue where they generally contain water.

\*Cultivated areas are coloured yellow.

\*The exterior boundaries of areas of Reserved or Protected Forests are shown by green ribbons.

\*Contours are approximate.

\*A relative height, 'R', represents the approximate height, in metres, between the top and bottom of a steep slope.

\*Wooded areas are coloured green. Scattered trees and other vegetation are in green but prominent surveyed trees are in black.

\*Not applicable

1st Edition 1980.

(Previous Edition on 1-inch scale: 1st 1922).

REFER TO THIS MAP AS :- 1:50,000

SHEET 55 C/10 FIRST EDITION

INDIA

भारत

Index to Sheets

55 55 55

55 55 55

55 55 55

55 55 55

55 55 55

55 55 55

55 55 55

55 55 55

55 55 55

55 55 55

55 55 55

55 55 55

55 55 55

55 55 55

55 55 55

55 55 55

55 55 55

55 55 55

55 55 55

55 55 55

55 55 55

55 55 55

55 55 55

55 55 55

55 55 55

55 55 55

55 55 55

Administrative Index

EAST NIMAR

EAST NIMAR

EAST NIMAR

EAST NIMAR

EAST NIMAR

EAST NIMAR

EAST NIMAR

EAST NIMAR

EAST NIMAR

EAST NIMAR

EAST NIMAR

EAST NIMAR

EAST NIMAR

EAST NIMAR

EAST NIMAR

EAST NIMAR

EAST NIMAR

EAST NIMAR

EAST NIMAR

EAST NIMAR

EAST NIMAR

EAST NIMAR

EAST NIMAR

EAST NIMAR

EAST NIMAR

EAST NIMAR

EAST NIMAR

Towns or Villages: inhabited, deserted, Fort, etc.

Huts: permanent, temporary, Tower, Antiquities, etc.

Temple, Chhatra, Church, Mosque, Idgah, Tomb, Graves, etc.

Lighthouse, Lightship, Buoy, Lighted, Unlighted, Anchorage, etc.

Mine, Vine, on traffic, Green, Struck, etc.

Palms, palm trees, other, Plants, Conifer, Bamboo, Other trees, etc.

Boundary, international, state, demarcated, undemarcated, etc.

district, sub-division, tahsil, taluk, forest, etc.

Boundary pillars surveyed, uncoloured, village junction, etc.

Height, triangulation, station, point, approximate, etc.

Bench-mark, geodetic, tertiary, canal, etc.

Post office, Telegraph office, Combined office, Police station, etc.

Post office, Telegraph office, Combined office, Police station, etc.

Post office, Telegraph office, Combined office, Police station, etc.

Post office, Telegraph office, Combined office, Police station, etc.

Post office, Telegraph office, Combined office, Police station, etc.

Post office, Telegraph office, Combined office, Police station, etc.

Post office, Telegraph office, Combined office, Police station, etc.

Post office, Telegraph office, Combined office, Police station, etc.

Post office, Telegraph office, Combined office, Police station, etc.

Post office, Telegraph office, Combined office, Police station, etc.

Post office, Telegraph office, Combined office, Police station, etc.

Post office, Telegraph office, Combined office, Police station, etc.

Post office, Telegraph office, Combined office, Police station, etc.

Post office, Telegraph office, Combined office, Police station, etc.

Post office, Telegraph office, Combined office, Police station, etc.

Post office, Telegraph office, Combined office, Police station, etc.

Post office, Telegraph office, Combined office, Police station, etc.