

**Sawai Madhopur–Sheopur–Goras Road**

## **Sheopur Bypass**

**Indicating location of alternative examined**

# SIGNIFICANCE

- Improves direct connectivity between Three states Madhya Pradesh, Rajasthan & Uttar Pradesh
- NH 552 Ext. Start from its junction with NH-52 near Tonk (Raj.) which Provide Connectivity (Jaipur-Kota Road) & Terminating at its junction with NH-27 (East-West Corridor) near Chirgaon in the state of Uttar Pradesh
- Project Road Starts From MP/RJ Border(Pali- Chambal River Bridge) at Ch. 0+000 Passes through Datarda Kalan, Soi Kalan and Sheopur, Project road terminates at Ch.- 51+750 Near Goras
- Project Road Connects to NH -44 ( North-South Corridor) which Provide Connectivity (Agra-Gwalior-Jhansi) & Also Provide Connectivity for Guna-Indore Via NH-46.
- Project Road Connects MP/RJ Border Which Provide Connectivity to Sawai Madhopur Which is a major tourism place Ranthambhore National Park
- Proposed Bypasses (Sheopur) Alignment will provide the connectivity outside of the cities/town/village, which will help to move traffic freely without entering into the cities/town/village and removes the traffic congestion.

# PRESENT STATUS OF SHEOPUR TOWN

## Silent features of Highway in Sheopur town

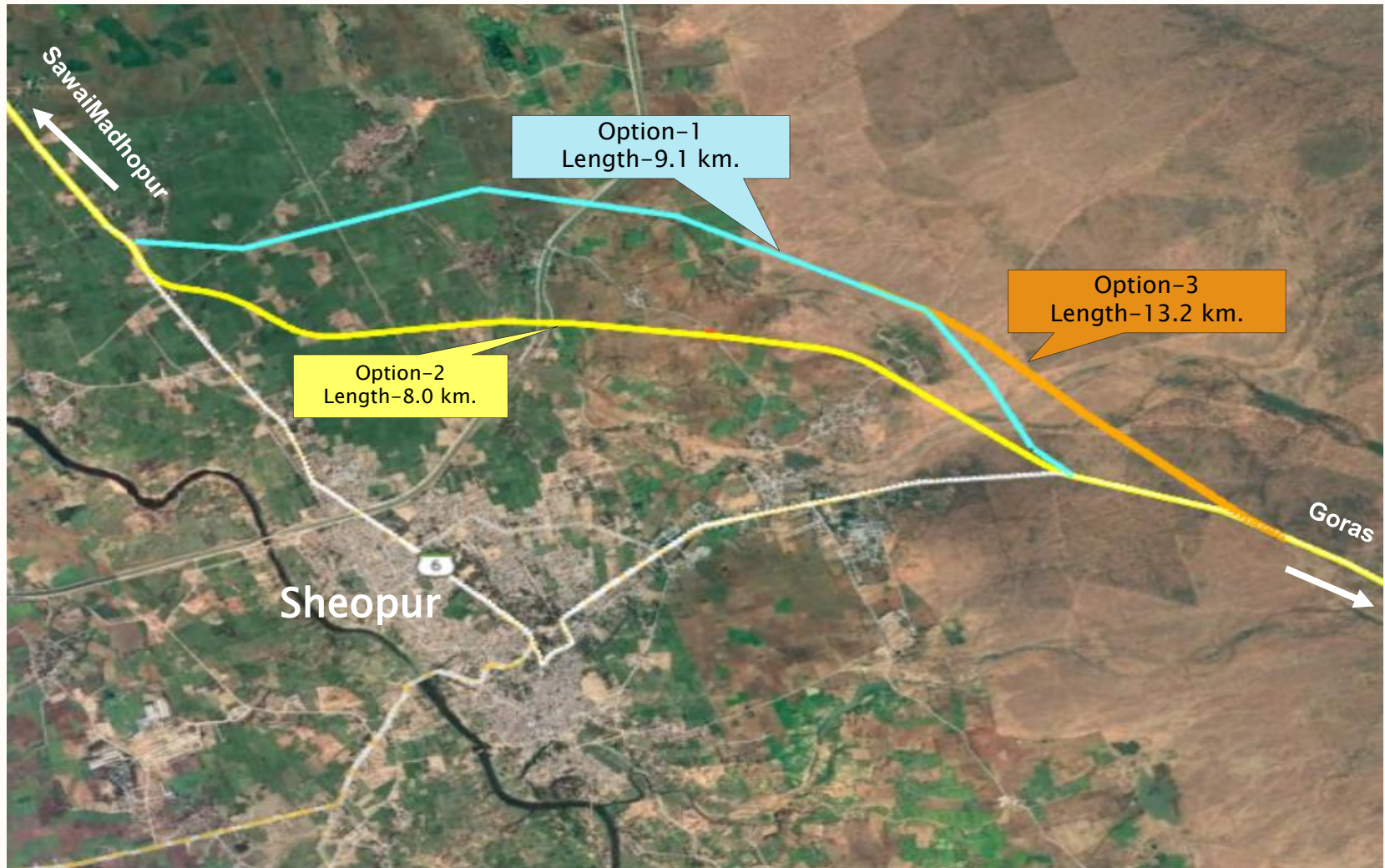
1. Carriageway
  - 7.0 m., 10m.
2. Shoulder width
  - 1.5 – 2.0 m.
3. Length of Town start to end
  - 8.0km (Approx.)
4. Available ROW
  - 12 to 20 m.
5. Type of properties will affect
  - Residential & Commercial





# **SHEOPUR SELECTED BYPASS**

There are 3 options of alignment are marked on Google Map given below



# SHEOPUR BYPASS DETAIL

## Alignment-I

This proposed alignment started at the Existing Km 21+450 of NH-552 at 200 m. from BRICK-KILN will passing through right side of existing NH-552Ext. and ends at the Existing Km 31+960 at the outer of Sheopur Town. The total length of existing stretch of Sheopur is 10.00 Kms, which is to be covered by proposed bypass alignment 1st of length 9.10 Kms. The maximum part of alignment passing through agriculture field. And forest land



# **SHEOPUR BYPASS OPTION -I**

**Alignment I is showing on Google map**



# SHEOPUR APPROVED BYPASS DETAIL

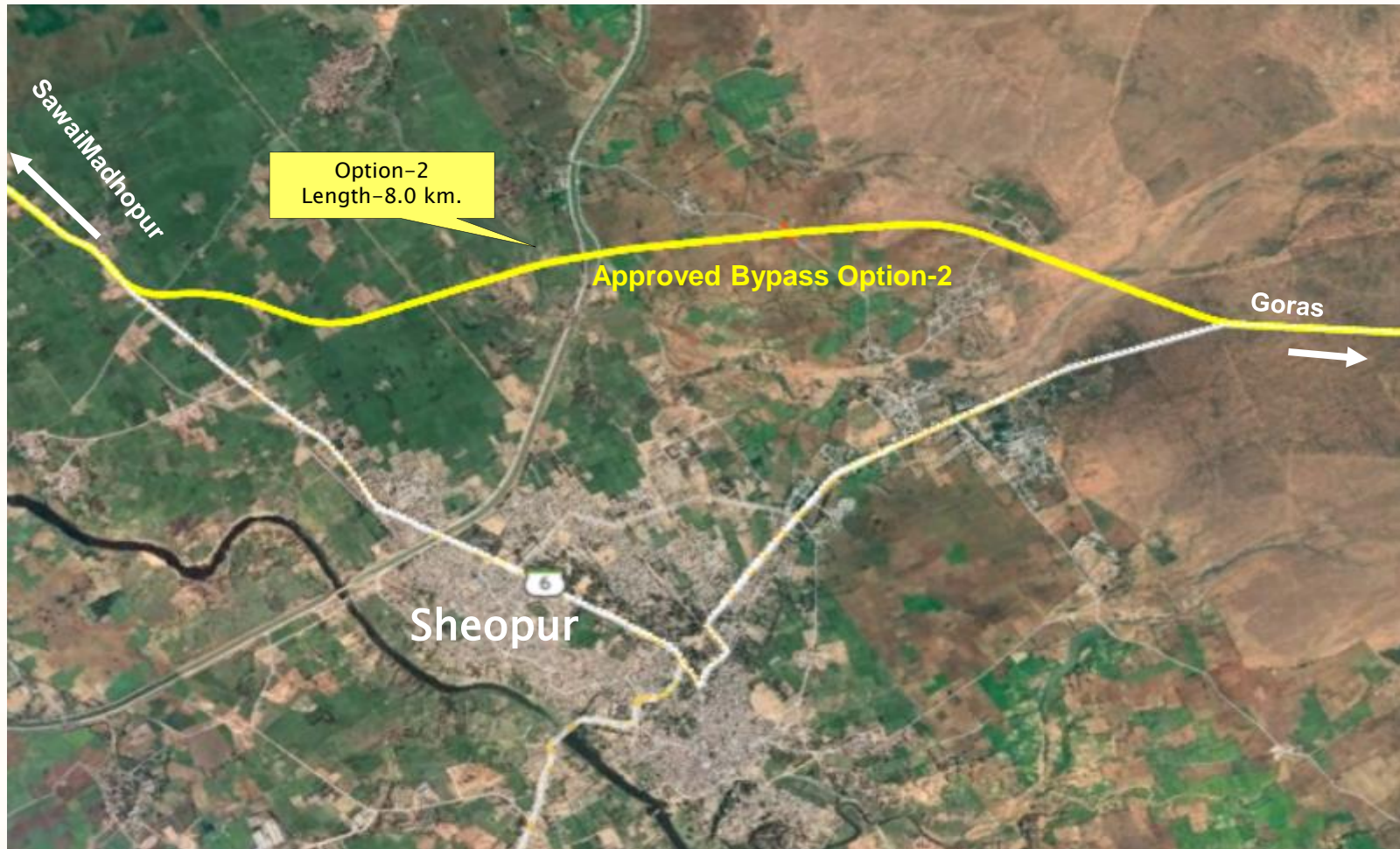
## Alignment-2

This proposed alignment started at the Existing Km 21+650 of NH-552 at near BRICK-KILN will passing through right side of existing NH-552Ext. and ends at the Km Existing 31+900 at the outer of Sheopur Town. The total length of existing stretch of Sheopur is 10.00 Kms, which is to be covered by proposed bypass alignment 2nd of length 8.00 Kms. The maximum part of alignment passing through agriculture field .



# APPROVED SHEOPUR BYPASS OPTION -II

Alignment- II is showing on Google map





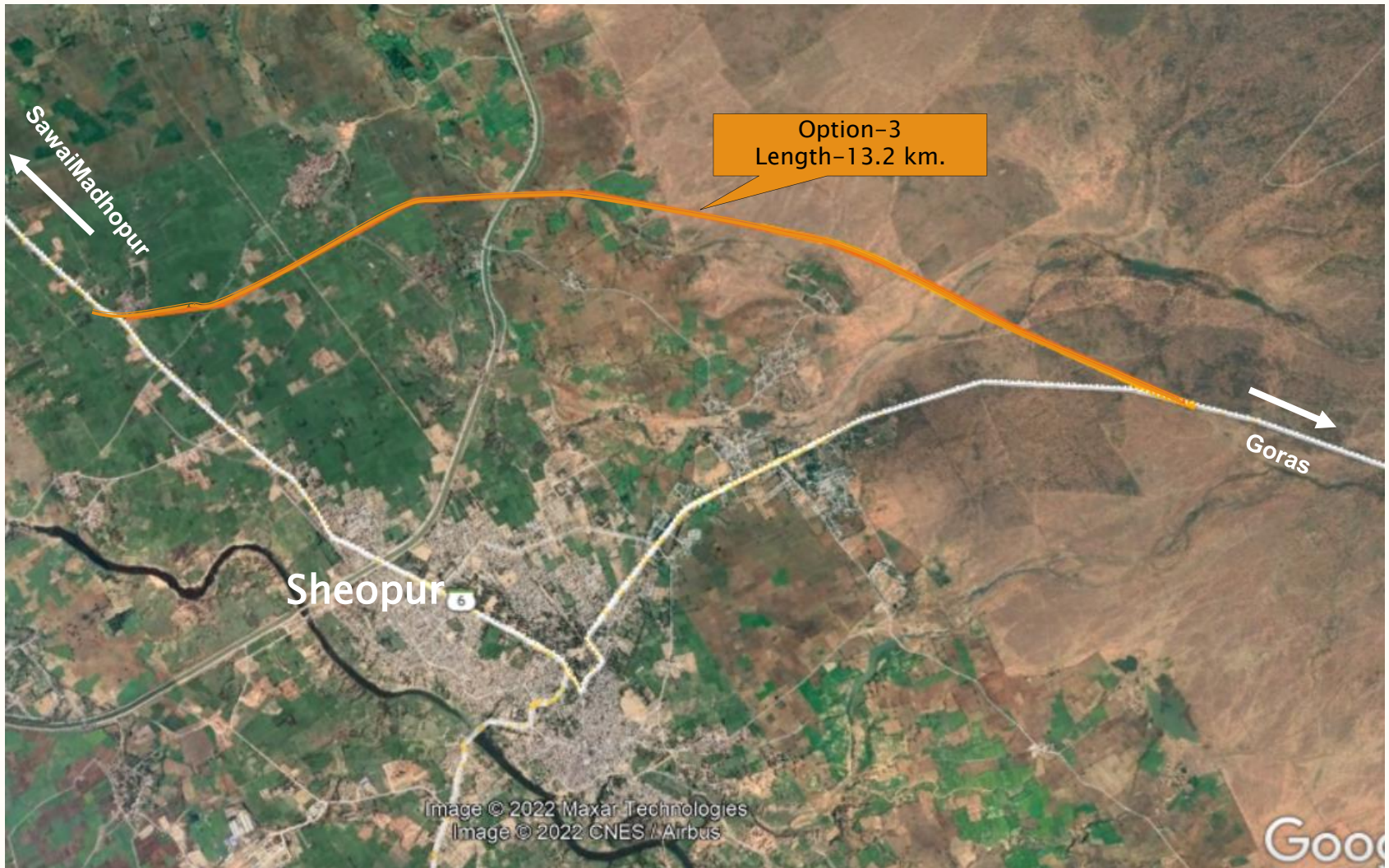
# SHEOPUR SELECTED BYPASS DETAIL

## Alignment-III

This proposed alignment started at the Existing Km 21+450 of NH-552 at 200 m. from BRICK-KILN will passing through right side of existing NH-552Ext. and ends at the Existing Km 33+460 at the outer of Sheopur Town. The total length of existing stretch of Sheopur is 10.00 Kms, which is to be covered by proposed bypass alignment 3rd of length 13.20 Kms. The maximum part of alignment passing through agriculture field. And forest land

# **SHEOPUR BYPASS OPTION -III**

**Alignment - III is showing on Google map**



# Sheopur Bypass Alignments Comparison

S.No	Type	Alignment-1	Alignment-2	Alignment-3
1	<b>Length (in M)</b>	9.1	8.0	13.2
2	<b>Terrain Type</b>	Plain	Plain & Rolling	Plain & Rolling
3	<b>Structures</b>			
	Culverts	8	5	10
	Minor Bridges	2	1	2
	Major Bridges	2	2	2
4	<b>Crossings (in Nos)</b>			
	Railway line	1	1	1
	HT Tower Lines	Nil	1	Nil
	HT Lines (11 KV & 33 KV)	Nil	Nil	Nil
	LT lines			
5	<b>Land (length in m)</b>			
	Forest Land	3500	2500	5200
	Non Forest Land	5600	5500	8.0
6	<b>R&amp;R Issues</b>	Nil	Nil	10 Nos.



## Comparison of alignment options

Details	Option – 1	Option – 2	Option – 3
Length Starts at Km Ends at Km	9.10 Km 21+450 31+960	8.0 Km 21+650 31+900	13.20 Km 21+450 33+460
ROW Required	20m	20m	20m
Terrain (approx.)	Plain	Plain & Rolling	Plain & Rolling Plain
Land Acquisition	18.20 Hect.	16.0 Hect.	26.4 Hect.
Land Type	Mixed (Agriculture , forest & Barren)	Mixed (Agriculture , forest & Barren)	Mixed (Agriculture , forest & Barren)
Road Intersection	Village Road - 03 nos.	Village Road - 03 nos.	Village Road - 02 nos.
Approx. Bypass Cost	Construction Cost 50.05 Crores ( 5.50 Crores / km) L.A. Cost: 9.46 Crores R & R (Nil)	Construction Cost 44.00 Crores ( 5.50 Crores / km) L.A. Cost: 8.32 Crores R & R Cost (Nil)	Construction Cost 72.60 Crores ( 5.50 Crores / km) L.A. Cost: 13.72 Crores R & R 5.00 (Nil)

# **Recommended Alignment For Sheopur Bypass**

- The option-2 of proposed alignment is recommended after comparison of engineering, environment Impact, social impact, land acquisition, R&R cost and construction cost etc. among all alignments option .
- The length of option –2 is Shorter to existing road length, and other options are bigger than existing length.
- The length of existing alignment is 10.0 Kms and proposed bypass length is 8.0 Kms.
- The maximum length is straight with nominal curves .
- Alignment-2 is passing from maximum open areas, therefore R&R cost will low compare to other alignment option-1 and option -3.

Its economical viability is comparatively more, So **Alignment Option-2 is recommended.**

**THANK YOU**

**MPPWD (NH) Gwalior**