

No. F42D2

Scale 1:50,000

F42C13 (41A/13)	F42D1 (41E/1)	F42D5 (41E/5)
F42C14 (41A/14)	F42D2 (41E/2) Kachchh GUJARAT	F42D6 (41E/6)
F42C15 (41A/15)	F42D3 (41E/3)	F42D7 (41E/7)

भारतीय सर्वेक्षण विभाग

SURVEY OF INDIA

1st Edition 2010.

Price : Rs. 50/-

CONVENTIONAL SYMBOLS

Express highway, with toll, with bridge, with distance stone	
Roads, metalled, according to importance	
Roads, double cart-track, according to importance	
Unmetalled road, Cart-track, Pack-track with pass, Foot-path	
Streams, with track in bed, underflow, Canal	
Dam, masonry or rock-filled, earthwork, Weir	
River, dry with water channel, with island & rocks, Tidal river	
Submerged rocks, Shoal, Swamp, Reeds	
Wells: lined, unlined, Tube-well, Spring, Tanks: perennial, dry	
Embankments: road or rail, tank, Broken ground	
Railways, broad gauge: double, single with station, under construction	
Railways, other gauges: double, single with distance stone, do.	
Mineral line or tramway, Kin, Cutting with tunnel	
Contours with sub-features, Rocky slopes, Cliffs	
Sand features (flat, (Z)and-hills(permanent), (S)unes(shifting)	
Towns or Villages: inhabited, deserted, Fort	
Huts: permanent, temporary, Tower, Antiquities	
Temple, Chhatra, Church, Mosque, Jogh, Tomb, Graves	
Lighthouse, Lightship, Buoys: lighted, unlighted, Anchorage	
Mine, Vine on trails, Grass, Scrub	
Palms: palmyra, other, Plantain, Conifer, Bamboo, Other trees	
Areas: cultivated, wooded, Surveyed tree	
Boundary, international	
state: demarcated, undemarcated	
district: subdivision, taluk or taluk forest	
Boundary pillars: surveyed, unlocated	
Heights, triangulated station, point, approximate	
BM 63-3, BM 63-3	
Post office, Overhead tank, Circuit house, Police station	
Rail forest or inspection bungalow, Guard house, Police station	
Camping ground, Forest: reserved, protected	
Special names: administrative, locality or tribal	
Hospital, Dispensary, Veterinary Hospital / Dispensary	
Aerodrome, Helipad, Tourist site	
Power line: with pylons surveyed, with poles unsurveyed	

NOTES :-

Heights and Contours have not been shown.
A relative height, L_c , represents the approximate height, in metres, between the top and bottom of a steep slope.
Tanks, shown dry, in this area usually contain water from July to October.
Area falling in this sheet, other than that of Bhuj, Lakhpur and Nakhatrana talukas is not included in any block but is a part of Kutch District.
Cultivation is periodic and dependent on rainfall.

COMPILATION INDEX

A. Surveyed during 1988-89. Updated for major details during 2006-07.



Projection - UTM Datum - WGS 84

Magnetic Variation from True North about 0° in 2005.
(Increasing by about 1° East annually).

1:50,000

500 m to 1 cm 2 cm to 1 km

For further details about this map, please contact

Director

Gujarat, Daman & Diu Geo-Spatial Data Centre

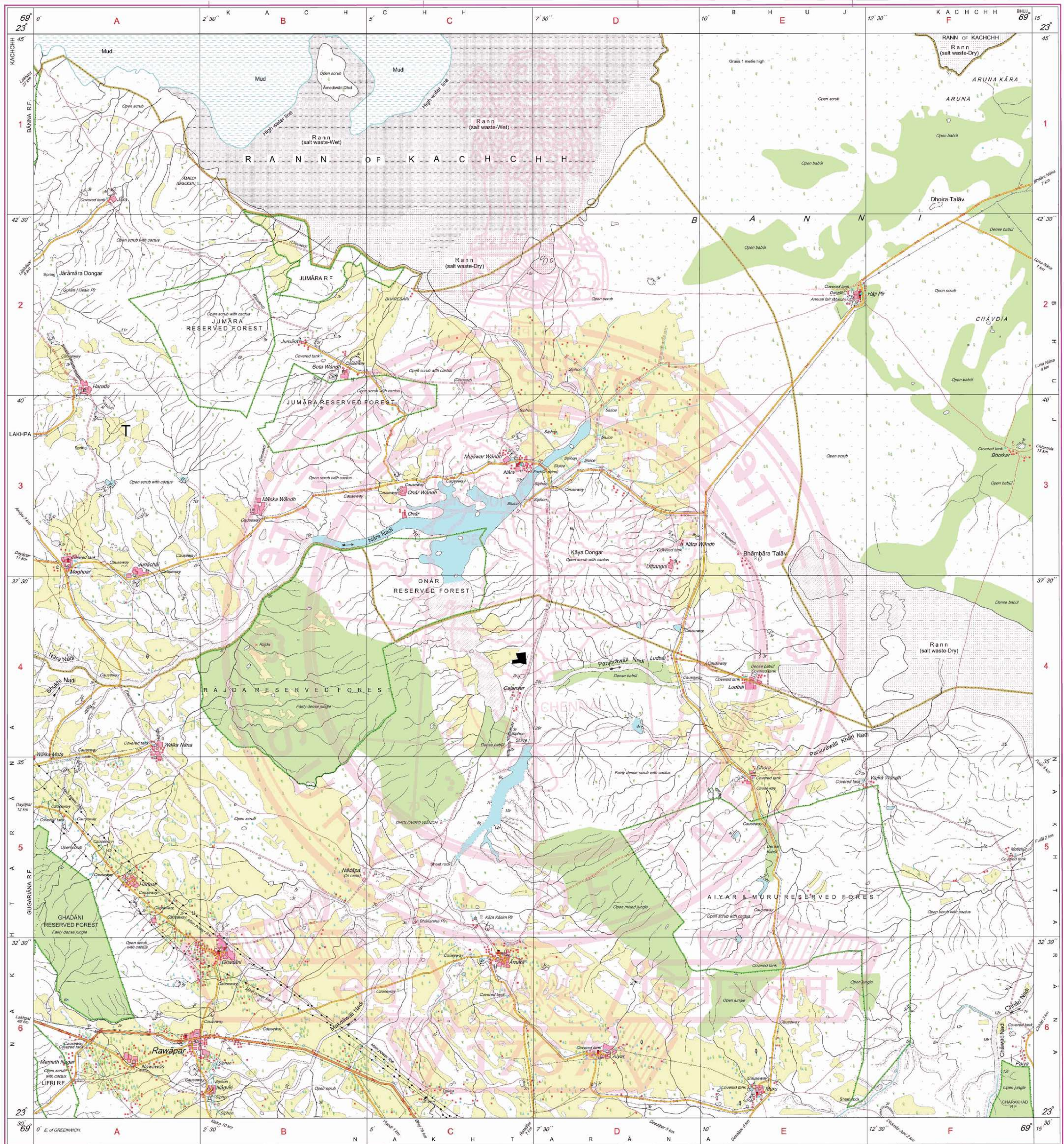
Survey of India, Sector-10(A)

Gandhinagar.

WEBSITE - www.surveyofindia.gov.in

Reproduction in whole or part by any means is prohibited
without the written permission of Survey of India, the
National Mapping Agency.

GOVERNMENT OF INDIA COPYRIGHT, 2010.



REG. No. 9202 -SPG D10 (GDAD GDC-1:50,000)-150911.

भारत के सर्वेक्षण विभाग के निदेशन से प्रकाशित.
Published under the direction of Surveyor General of India.
Survey of India, Hathi Bakala Estate, Post Box No.37, Dehra Dun-248001 (Uttarakhand)
Department of Science & Technology, Government of India.

PRINTED AT THE SOUTHERN PRINTING GROUP OF SURVEY OF INDIA.

5.2178 Ha. Land proposed for CA by owner
in R. Survey No. 205 & 206 of Gajansar (Ta. Nakhatrana)

No. F42D3

Scale 1:50,000

F42C14 (41A/14)	F42D2 (41E/2)	F42D6 (41E/6)
F42C15 (41A/15)	F42D3 (41E/3) Kachchh GUJARAT	F42D7 (41E/7)
F42C16 (41A/16)	F42D4 (41E/4)	F42D8 (41E/8)

भारतीय सर्वेक्षण विभाग

SURVEY OF INDIA

1st Edition 2010.

Price : Rs. 70/-

CONVENTIONAL SYMBOLS

Express highway: with toll; with bridge, with distance stone	
Roads, metalled, according to importance	
Roads, double carriageway, according to importance	
Unmetalled road: Cart-track: Pack-track with pass: Foot-path	
Streams: with track in bed; undefined: Canal	
Dams: masonry or rock-filled, earthenwork: Weir	
River: dry with water channel; with island & rocks: Tidal river	
Submerged rocks: Shoal: Swamp: Reeds	
Wells: lined; unlined: Tube-well: Spring: Tanks: perennial; dry	
Embankments: road or rail; tank: Broken ground	
Railways, broad gauge: double; single with station; under constr.	
Railways, other gauges: double; single with distance stone; do.	
Mineral line or tramway: Kln. Cutting with tunnel	
Contours with sub-features: Rocky slopes: Cliffs	
Sand features: (1) flat: (2) sand-hills (permanent): (3) dunes (shifting)	
Towns or Villages: inhabited; deserted: Fort	
Huts: permanent; temporary: Tower: Antiquities	
Temples: Chhatra: Church: Mosque: Idgah: Tomb: Graves	
Lighthouse: Lightship: Buoys: lighted; unlighted: Anchorage	
Mine: Vine on trails: Grass: Scrub	
Palms: palmyra; other: Plantain: Conifer: Bamboo: Other trees	
Areas cultivated: wooded: Surveyed tree	
Boundary, international	
state: demarcated; undemarcated	
district: subdivision; tahsil or taluk; forest	
Boundary pillars: surveyed; unlocated	
Heights, triangulated: station; point; approximate	
Bench-mark: geodetic; tertiary; canal	
Post office: Overhead tank	
Rest house or inspection bungalow: Circuit house: Police station	
Camping ground: Forest: reserved; protected	
Spaced names: administrative; locality or tribal	
Hospital: Dispensary: Veterinary: Hospital / Dispensary	
Aerodrome: Helipad: Tourist site	
Power line: with pylons surveyed; with poles unsurveyed	

NOTES :-

Heights and Contours have not been shown.
A relative height e.g., 8, represents the approximate height, in metres between the top and bottom of a steep slope.
Tanks, shown dry, in this area usually contain water from July to October.
Cultivation is periodic and depends on rain fall.

COMPILATION INDEX

A	Surveyed during 1986-87. Updated for major details during 2006-07.
---	--

Projection - UTM Datum - WGS 84

Magnetic Variation from True North about 0° in 2005.
(Increasing by about 1° annually).

1:50,000

500 m to 1 cm
Metres 1000 500 0 1 2 3 Kilometres

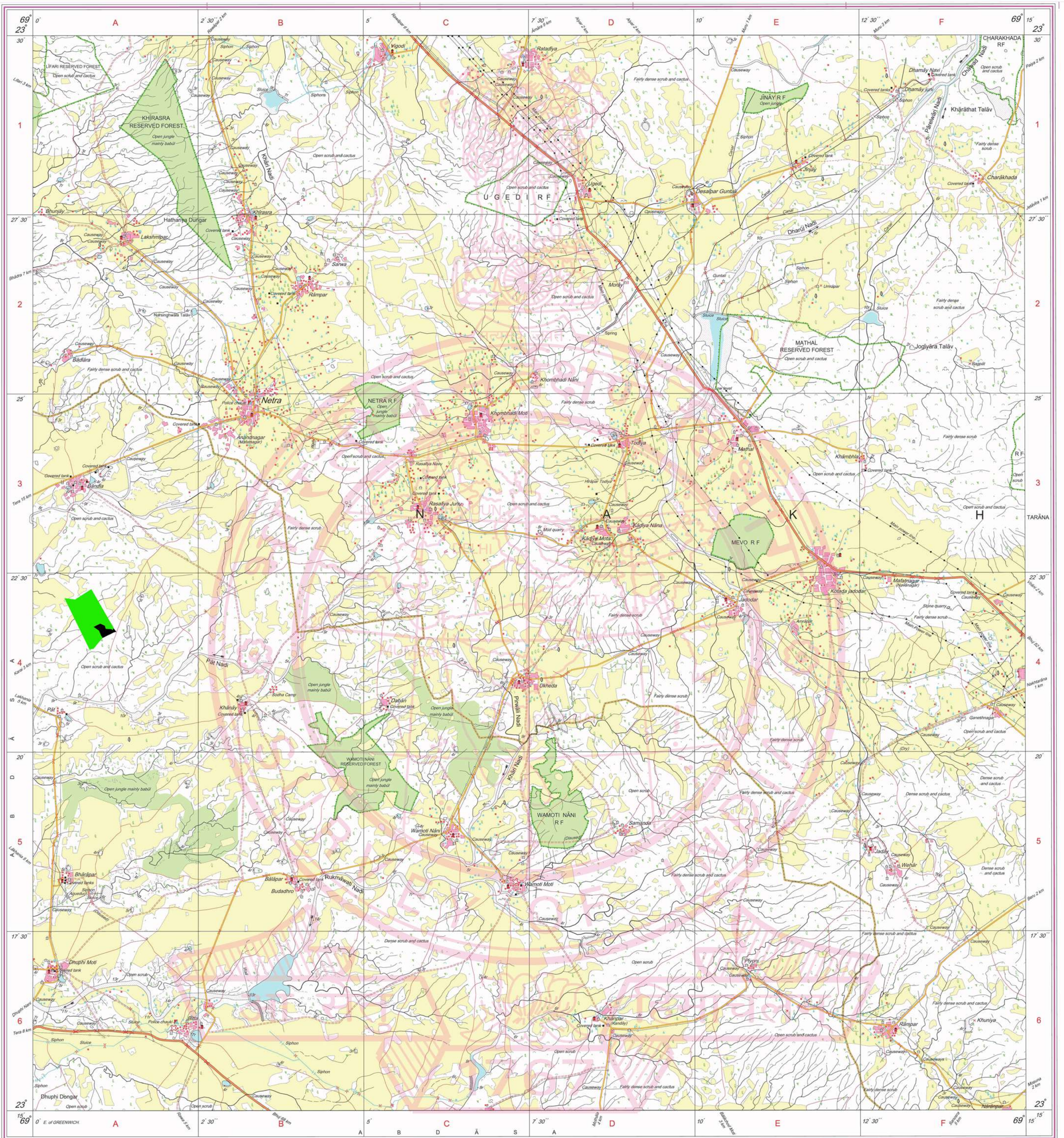
For further details about this map, please contact

Director
Gujarat, Daman & Diu Geo-Spatial Data Centre
Survey of India, Sector 10 (A)
Gandhinagar.

WEBSITE - www.surveyofindia.gov.in

Reproduction in whole or part by any means is prohibited
without the written permission of Survey of India, the
National Mapping Agency.

GOVERNMENT OF INDIA COPYRIGHT, 2010.



REG. No. 9484 - SPO D10 GDCD QDC-1:50,000-150815.

भारत के सर्वेक्षक, सर्वेक्षण विभाग, भारत, के निर्देशन में प्रकाशित,
Published under the direction of Swarna Subba Rao, B.E., Surveyor General of India,
Survey of India, Hathi-Barkala Estate, Post Box No.37, Dehra Dun-248001 (Uttarakhand)
Department of Science & Technology, Government of India.

PRINTED AT THE SOUTHERN PRINTING GROUP OF SURVEY OF INDIA.

 **Khanay RF Area**
 **4.5325 Ha. Land proposed for CA by
owner in Khanay R. Survey No. 27 & 28.**