

Name of Project: Diversion of 0.2160 Ha. Reserved Forest Land for the project of the Extension of Kadana Dahod Lift Irrigation PKG-1 Underground Water Supply Pipeline, Village:-Surpura, Mota Ambaliya & Parmar na Dungarpur Ta:-Singvad, Dist:-Dahod In Gujarat State.

INDIA
REFER TO THIS MAP AS :- 1:50,000
SHEET 46 E/16 FIRST EDITION

FIRST EDITION

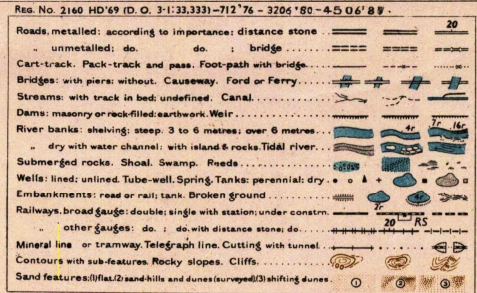
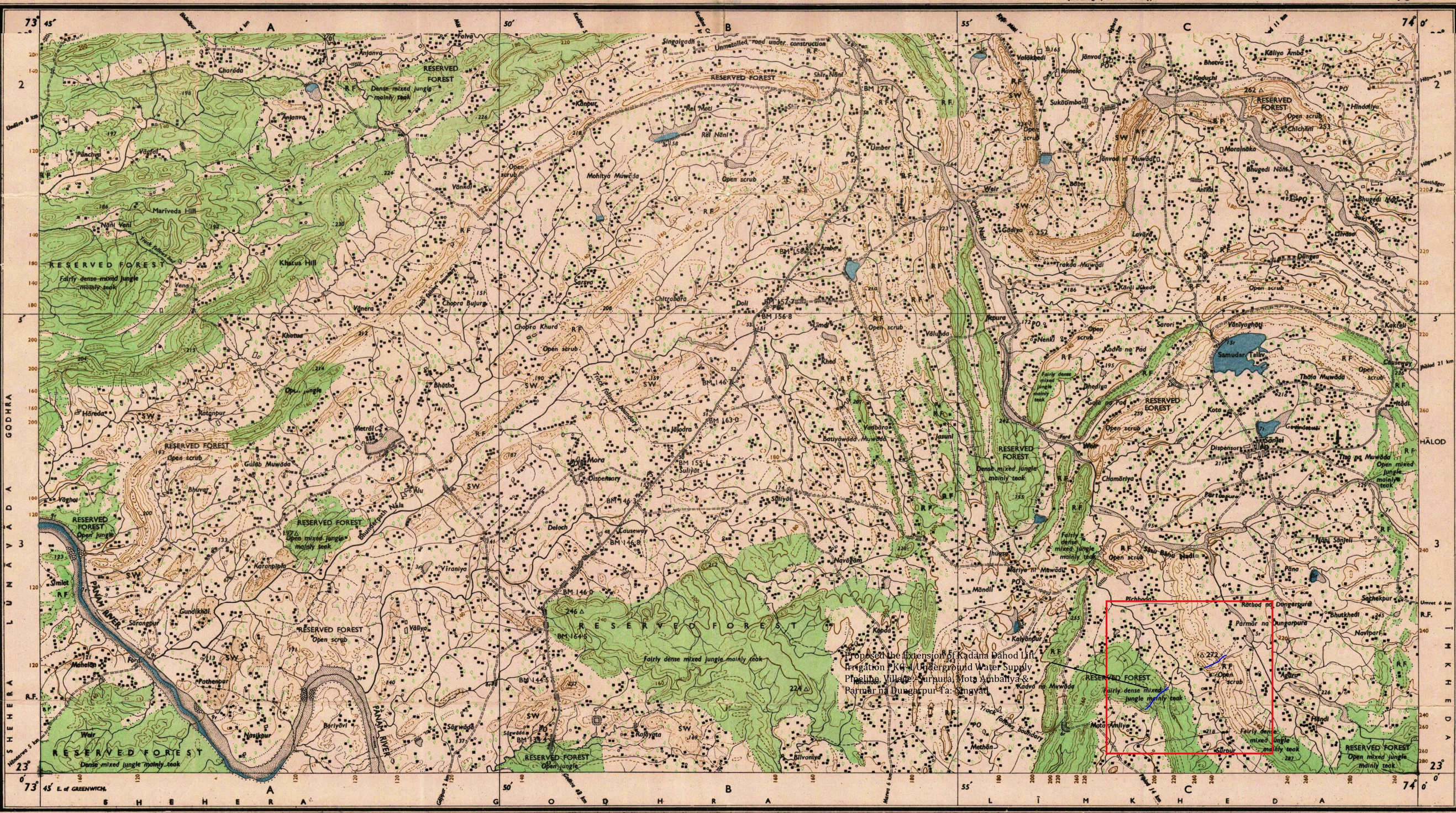
Magnetic Variation from True North about $\frac{1}{2}^{\circ}$ West in 1965.
(Increasing by about $\frac{1}{2}^{\circ}$ annually).

No. 46 E
16

PANCH MAHALS DISTRICT.

Surveyed 1967-68.

GUJARAT



Index to Sheets

46 $\frac{11}{11}$	46 $\frac{12}{12}$	46 $\frac{13}{13}$
46 $\frac{14}{14}$	46 $\frac{15}{15}$	46 $\frac{16}{16}$
46 $\frac{17}{17}$	46 $\frac{18}{18}$	46 $\frac{19}{19}$

REFERENCE

Proposed the Extension of Kadana Dahod Lift Irrigation PKG-1 Underground Water Supply Pipeline, Village:-Surpura, Mota Ambaliya & Parmar na Dungarpur Ta:-Singvad

Published under the direction of Brigadier J. A. F. Dalal, B. A. (Hons.), p.s.c., M.I.S., M.I.E., Officiating Surveyor General of India, 1969

1:50,000

500 m to 1 cm
Metres 1000 500 0 1 2 3 4 5 6 7 Kilometres
2 cm to 1 km

HEIGHTS & CONTOURS IN METRES
CONTOUR INTERVAL 20 METRES

*Water features are shown in blue where they generally contain water.
*Cultivated areas are coloured yellow.
*The exterior boundaries of areas of Reserved or Protected Forests are shown by green ribands.

Contours are approximate.
A relative height, .8r, represents the approximate height, in metres, between the top and bottom of a steep slope.
Wooded areas are coloured green. Scattered trees and other vegetation are in green, but prominent surveyed trees are in black.

* Not applicable.

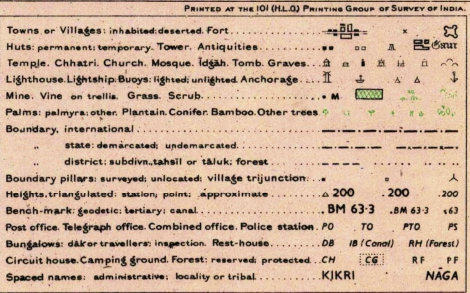
The triangulated heights and contours in this sheet have not been adjusted to the heights of the spirit-levelled bench-marks and may not be strictly in accordance with them.
The kilometre stone numbers along roads are shown in slant type, e.g., '5'; whereas milestone numbers are shown in upright type, e.g., '5'.
Unmetalled roads and cart-tracks in this sheet are generally motorable in dry season.
Tanks, shown dry, in this area, usually contain water from July to April.
Numerous field bunds of less than 2 metres in height occur throughout the cultivated area.
Cultivation is periodic and dependent on rainfall.

Administrative Index



Deputy Executive Engineer
Hadaf Canal Sub Division No. 5
Limkheda

Executive Engineer
Dahod Irrigation Division
Dahod



GOVERNMENT OF INDIA COPYRIGHT, 1969.
Price: Five Rupees.

REFER TO THIS MAP AS :- 1:50,000
SHEET 46 E/16 FIRST EDITION

INDIA

REFERENCE
SW Stony waste.