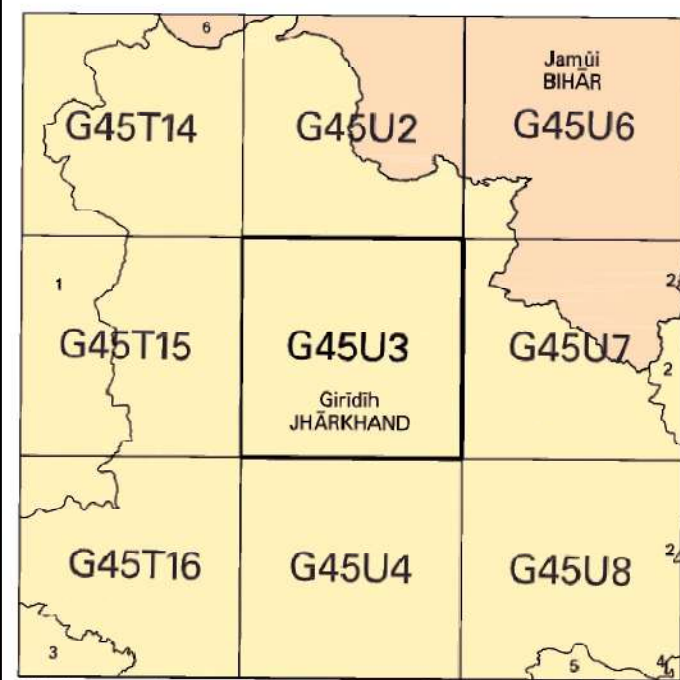


No. G45U3

Scale 1:50,000

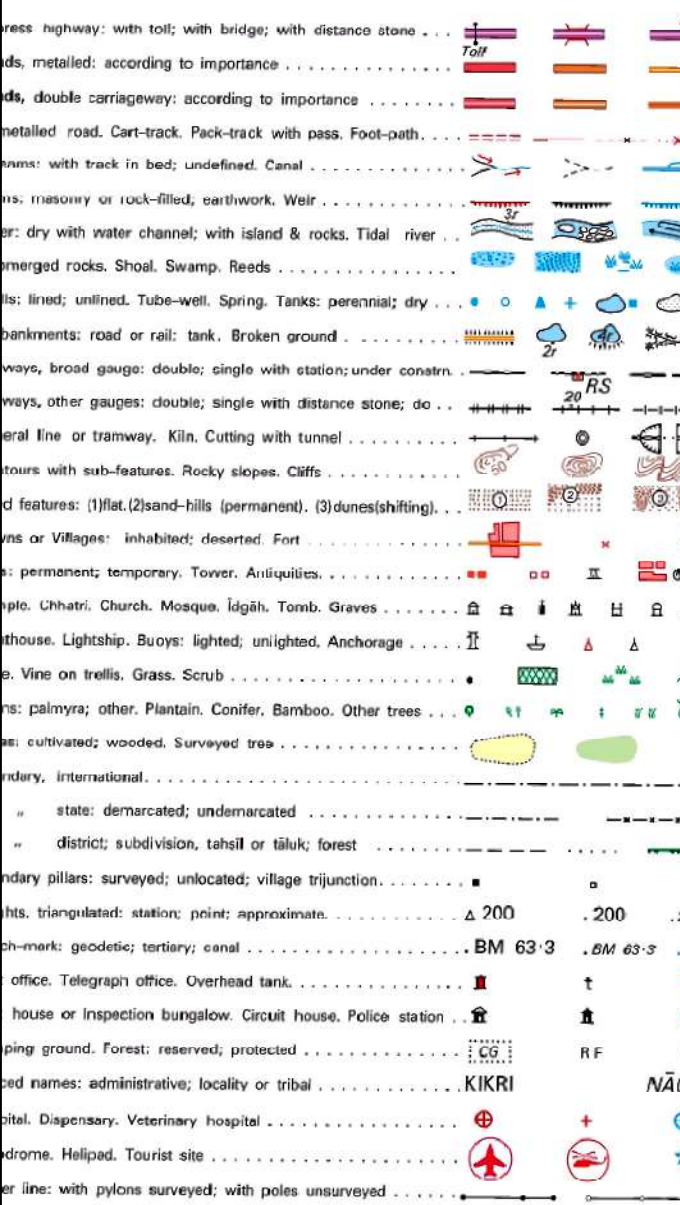


1 Kodarma, JHARKHAND.
2 Deoghar, JHARKHAND.
3 Hazaribagh, JHARKHAND.
4 Jāmāra, JHARKHAND.
5 Dhanbād, JHARKHAND.
6 Nawāda, BIHAR.

सर्वेक्षण विभाग SURVEY OF INDIA

1st Edition 2009. Price : Rs. 50 /-

CONVENTIONAL SYMBOLS



REFERENCE

are in metres and above Indian mean sea level.
are approximate.
height, or represents the approximate height in metres, between the top and bottom of a slope.
rior boundaries of areas of Reserved or Protected Forests are shown by green ribands.
own dry, in this area usually contain water from July to December.
umps are shown thus: f

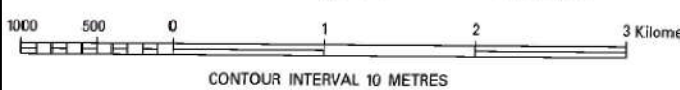
PILATION INDEX

A. Surveyed during 1976-77. Updated from 1:25,000 Survey 1993-94 and updated major details during 2004-05.

Projection - UTM Datum - WGS 84

Magnetic Variation from True North about 1/4° West in 2005.
(Increasing by about 1' annually).

1:50,000



For further details about this map, please contact

Director

Jharkhand Geo-Spatial Data Centre

Survey of India, Durgam

Ranchi - 834002

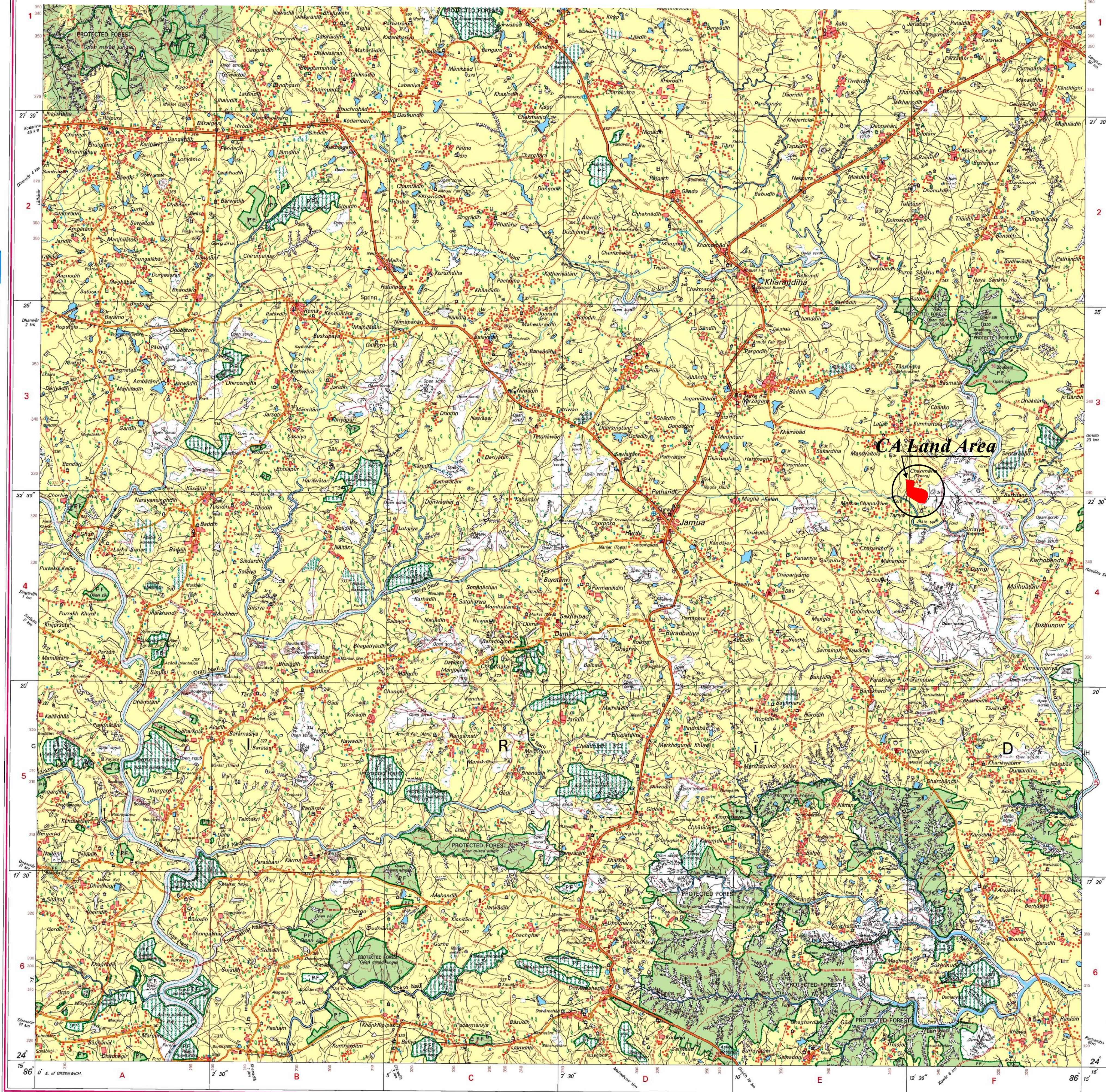
Fax : 0651 - 2482789

WEBSITE - www.surveyofindia.gov.in

roduction in whole or part by any means is prohibited
out the written permission of Survey of India, the
ional Mapping Agency.

GOVERNMENT OF INDIA COPYRIGHT, 2009.

Compensatory Afforestation Land Under Giridih West Forest Division of 132kv D/C Jamua Gawan Transmission Line



REG. No. SPG D 0 (Jharkhand GDC 1:50,000)

भारत के नक्शाकार के नियंत्रण में प्रकाशित,
Published under the direction of Surveyor General of India,
Survey of India, Hattiberkala Estate, Post Box No. 37, Dehra Dun - 248001 (Uttarakhand),
Department of Science & Technology, Government of India.

PRINTED AT THE SOUTHERN PRINTING GROUP OF SURVEY OF INDIA