

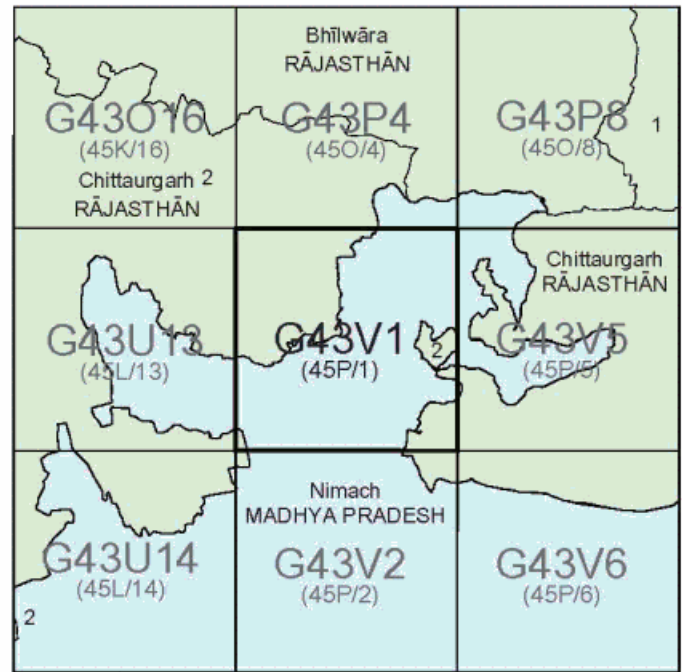


निर्यात के लिए नहीं NOT FOR EXPORT

OPEN SERIES  
MAP

No. G43V1

Scale 1:50,000



भारतीय सर्वेक्षण विभाग

SURVEY OF INDIA

1st Edition 2011.

Price : Rs. 77/-

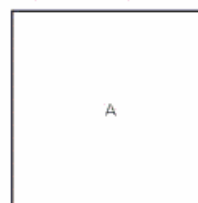
CONVENTIONAL SYMBOLS



NOTES :-

Heights are in metres and above Indian mean sea level.  
Contours are approximate.  
A relative height, e.g., 40', represents the approximate height, in metres, between the top and bottom of a steep slope.  
Wells and tube wells are numerous throughout the sheet, only the important ones have been shown.  
In this sheet, Gairnal stands for Ferry.  
Forest boundaries in this sheet have been corrected as a result of verification survey carried out during 1995-96.  
Dagga is a tank which is used for collection of water.

COMPILATION INDEX



Projection - UTM Datum - WGS 84

Magnetic Variation from True North about 0° in 2005.  
(Increasing by about 1° East annually).

1:50,000

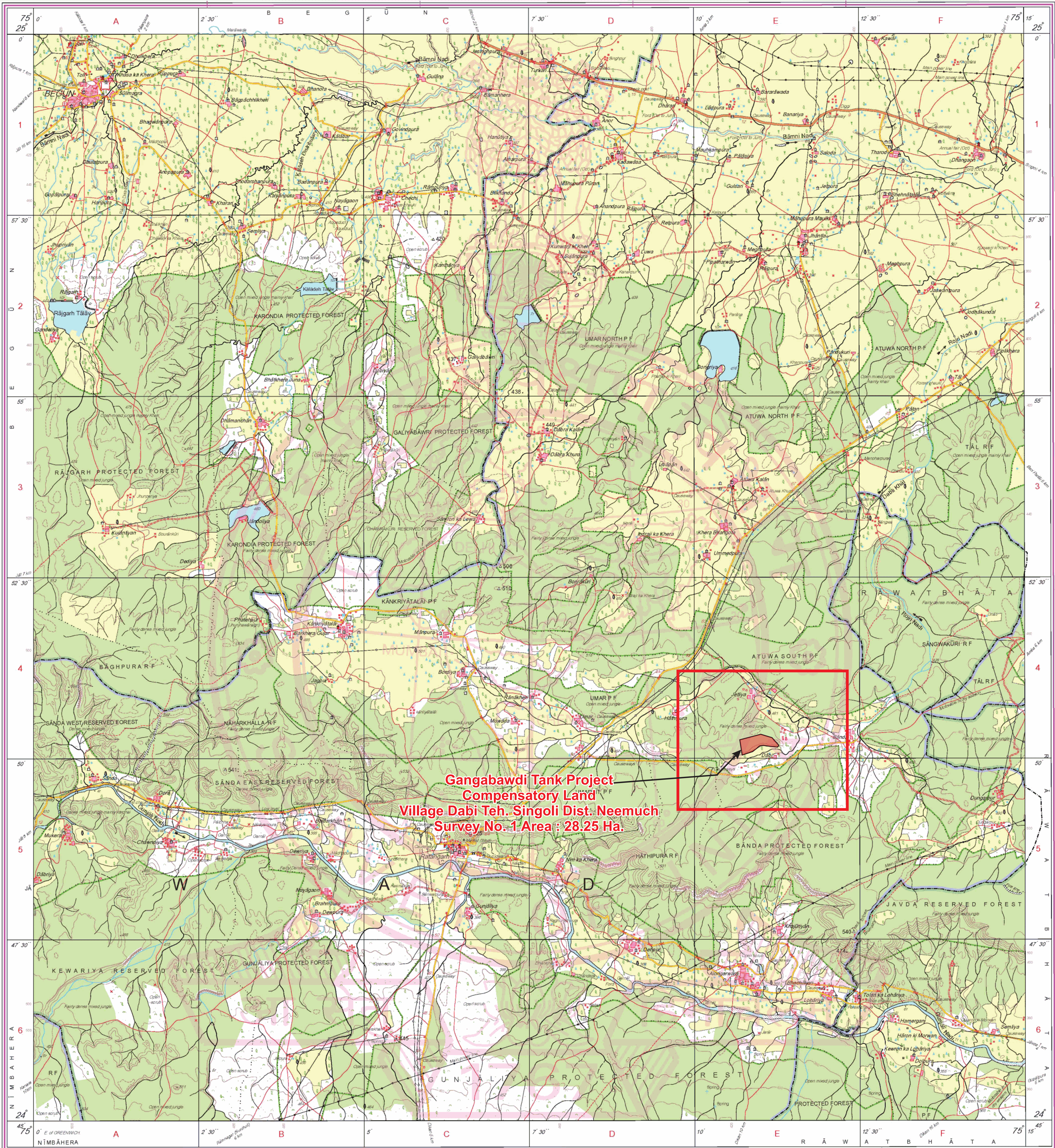


For further details about this map, please contact  
Director  
Rajasthan Geo-Spatial Data Centre  
Survey of India  
Sector 10, Vidyadhamagar  
Jaipur.

WEBSITE - www.surveyofindia.gov.in

Reproduction in whole or part by any means is prohibited  
without the written permission of Survey of India, the  
National Mapping Agency.

© GOVERNMENT OF INDIA COPYRIGHT, 2011.



Gangabawdi Tank Project  
Compensatory Land  
Village Dabi Teh. Singoli Dist. Neemuch  
Survey No. 1 Area : 28.25 Ha.

REG. No. P.D.F. - W.P.G. 111 (Rajasthan GDC-1:50,000)

भारत के सर्वेक्षक, स्वर्ण युवा राव, बी००, के निदेश में प्रकाशित.  
Published under the direction of Swarna Subba Rao, B.E., Surveyor General of India,  
Survey of India, Hahibarkala Estate, Post Box No. 37, Dehra Dun-248001 (Uttarakhand)  
Department of Science & Technology, Government of India.

(Himanshu Bhabhor)  
Sub Divisional Officer  
Water Resources Sub Division  
Rampura

(Vimal Shrivastva)  
Executive Engineer  
Water Resources Division  
Neemuch

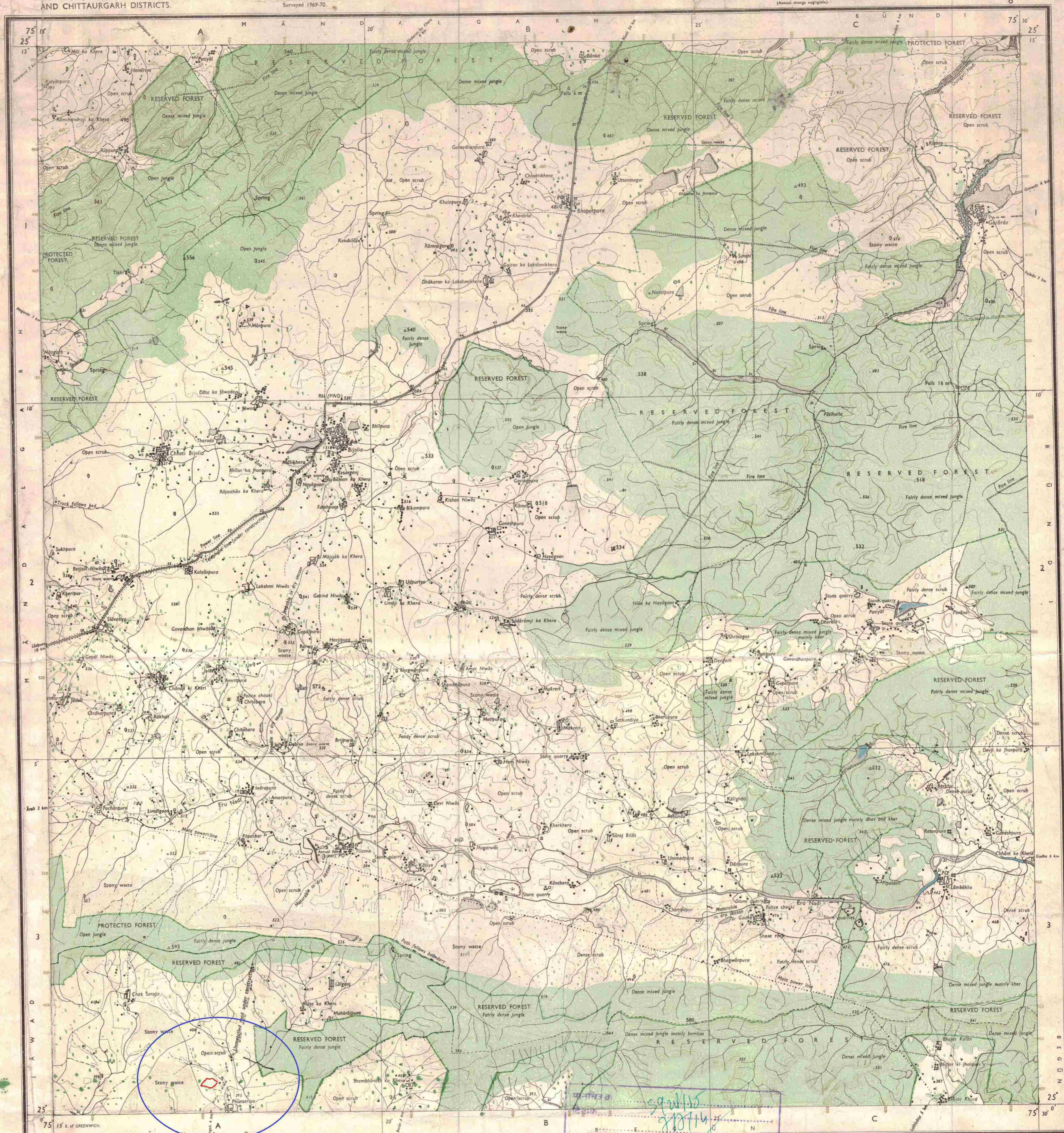
PRINTED AT THE WESTERN PRINTING GROUP OF SURVEY OF INDIA.



MADHYA PRADESH  
RAJASTHĀN

FIRST EDITION

Magnetic Variation from True North about  $\frac{1}{2}^{\circ}$  West in 1970.  
(Annual change negligible).

[illegible]

$45 \frac{O}{3}$	$45 \frac{O}{7}$	45
$45 \frac{O}{4}$	<b><math>45 \frac{O}{8}</math></b>	45
$45 \frac{P}{1}$	$45 \frac{P}{5}$	45

1:50,000

HEIGHTS & CONTOURS IN METRES  
CONTOUR INTERVAL 20 METRES

- \*Water features are shown in blue where they generally contain water.
- \*Cultivated areas are coloured yellow.

The exterior boundaries of areas of Reserved or Protected Forests are shown by green ribands.

Contours are approximate  
A relative height,  $\delta r$ ,  
approximate height, in metres  
top and bottom of a step  
Wooded areas are colour  
trees and other vegetation  
dominant subtropical trees

§ Not applicable

The kilometre stone numbers along roads are shown in slant type, e.g., '5' whereas milestone numbers are shown in upright type, e.g., '5'.

The kilometre stone numbers along roads are shown in slant type, e.g. '5' whereas Tanks, shown dry, in this area usually contain water from July to November. Wells are numerous throughout the sheet; only the important ones have been shown.

The Madhya Pradesh-Rajasthan state boundary has been surveyed as pointed out by the local officials on the ground and has not been verified by the Governments concerned.

Administrative Index



1. MANDSAURY, M. P.  
2. CHITTAURGARH, R.

Printed at the U.S. GPO: Printing Office of the U.S. Government			
<p>Towns or Villages: inhabited deserted Fort.</p> <p>Huts: permanent temporary. Tents: Antiquities</p> <p>Churches: Catholic Protestant. Temples: Tunnels: Graves</p> <p>Lighthouse: Lightship: Docks: Lighted: unlighted: Anchorage</p> <p>Mine: mine on: wells: Grass: Scrub</p> <p>Palms: palms: other: Plantain: Cane: Bamboo: Other trees?</p> <p>Boundary: international state demarcated: undemarcated</p> <p>district: subdistrict: other: Muck: Forest</p> <p>Boundary: maritime surveyed: uncharted: lighted: lighted: junction</p> <p>Heights: triangulated: station: point: approximate</p> <p>Bench mark: geodetic: station: canal</p> <p>Post office: telegraph office: combined office: Police station</p> <p>Goods: cargo: travelers: inspection: Rest: house</p> <p>Camp: ground: ground: ground: ground: ground: ground</p> <p>Singular names: administrative: postal: railway: KIKIRI</p>			

GOVERNMENT OF INDIA COPYRIGHT, 1971.  
Price: Ten Rupees (Rs. Ten Only)

REFER TO THIS MAP AS:- 1:50,000  
SHEET/ 45 O/8 FIRST EDITION

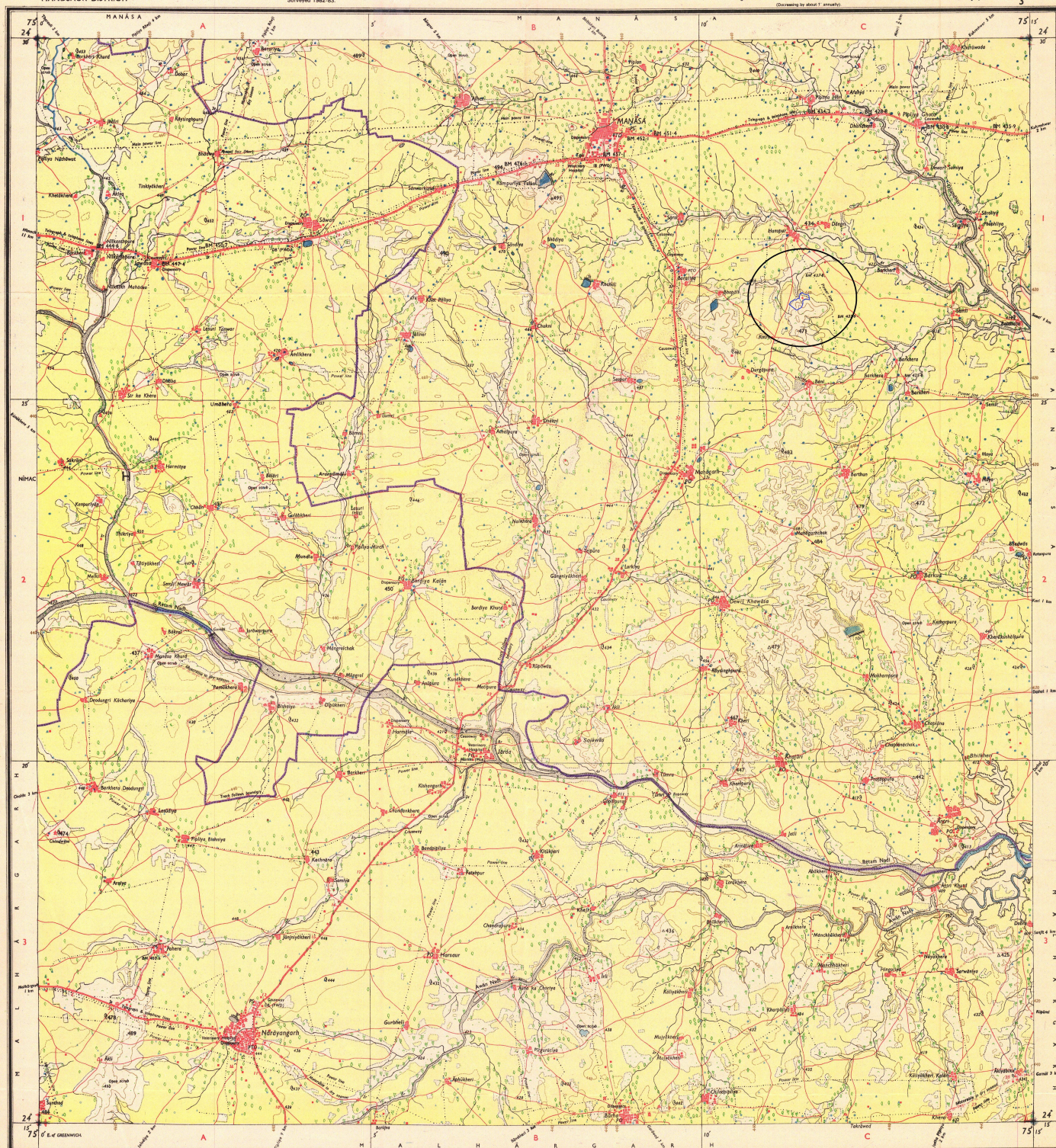
INDIA

602 *ms*  
कार्यपालन यंत्री  
जल संसाधन संचालन  
नीमग (स.प्र.)



MANDSAUR DISTRICT.

Surveyed 1982-83

Magnetic Variation from True North about  $2^{\circ}$  West in 1980

Res. No. 0071: 191 0 16 (D. O. 7.1 50 038) - 7104'67.

भारत के उपराष्ट्रपति केन्द्र सरकार (गिरिधर चन्द्र अग्रवाल, बी.ई. (आयसी) (विशेष), एक एक बी.पी.एच.ई. (आई.टी.बी.), एच.आई.एस., एच.बी.ए., एच.ए.एच.टी.आर.एच., डे.डिप्लोम.के.एच.टी.  
Published under the direction of Major General Girish Chandra Agrawal, B.E. (Hons.) (CWE), M.Sc. Ph.D. (T.C.), F.I.S., M.C.A., M.A.S.P.R.S., Surveyor General of India  
1985

8,888

HEIGHTS &amp; CONTOURS IN METRES

CONTOUR INTERVAL 20 METRES

Water features are shown in blue where they generally contain water.  
Cultivated areas are coloured yellow.  
The exterior boundaries of areas of Reserved or Protected Forests are shown by green ribands

Contours are approximate.  
A relative height,  $\Delta h$ , represents the approximate height, in metres, between the top and bottom of a steep slope.  
Wooded areas are coloured green. Scattered trees and other vegetation are in green, but prominent surveyed trees are in black.

The triangulated heights and contours in this sheet have not been adjusted to the heights of the spirit-levelled bench-marks and may not be strictly in accordance with them.

<sup>100</sup> In this sheet general roads for ferry.

Wells and tube-wells are numerous throughout the sheet, only the important ones have been shown.

Administrative Index

MANITOBA

[illegible]

© GOVERNMENT OF INDIA. COPYRIGHT, 1980.  
Price: Five Rupees.

REFER TO THIS MAP AS - 1:50,000  
SHEET 45 P/3 SECOND EDITION

INDIA भारत





निर्यात के लिए नहीं NOT FOR EXPORT

OPEN SERIES  
MAP

No. G43V7

Scale 1:50,000

G43V2 (45P/2)	G43V6 (45P/6)	G43V10 (45P/10)
G43V3 (45P/3)	G43V7 (45P/7)	G43V11 (45P/11)
G43V4 (45P/4)	G43V8 (45P/8)	G43V12 (45P/12)

1 Chhittaurgarh, RAJASTHAN.

2 Jhalawar, RAJASTHAN.

भारतीय सर्वेक्षण विभाग

SURVEY OF INDIA

1st Edition 2009.

Price : Rs. 50/-

#### CONVENTIONAL SYMBOLS



#### NOTES

Heights are in metres and above Indian mean sea level.  
Contours are approximate.  
A relative height, e.g., 3, represents the approximate height, in metres, between the top and bottom of a steep slope.  
The triangulated heights and contours in this sheet have not been adjusted to the heights of the approved bench marks and may not be strictly in accordance with them.

#### COMPILATION INDEX

A Surveyed during 1982-83. Updated for major details during 2005-06.

Projection - UTM Datum - WGS 84

Magnetic Variation from True North about 1/2° West in 2005.

1:50,000

Metres 1000 500 0 1 2 3 Kilometres

CONTOUR INTERVAL 20 METRES

For further details about the map, please contact

Director

Madhya Pradesh Geo-Spatial Data Centre

Survey of India

Survey Colony, Vijay Nagar

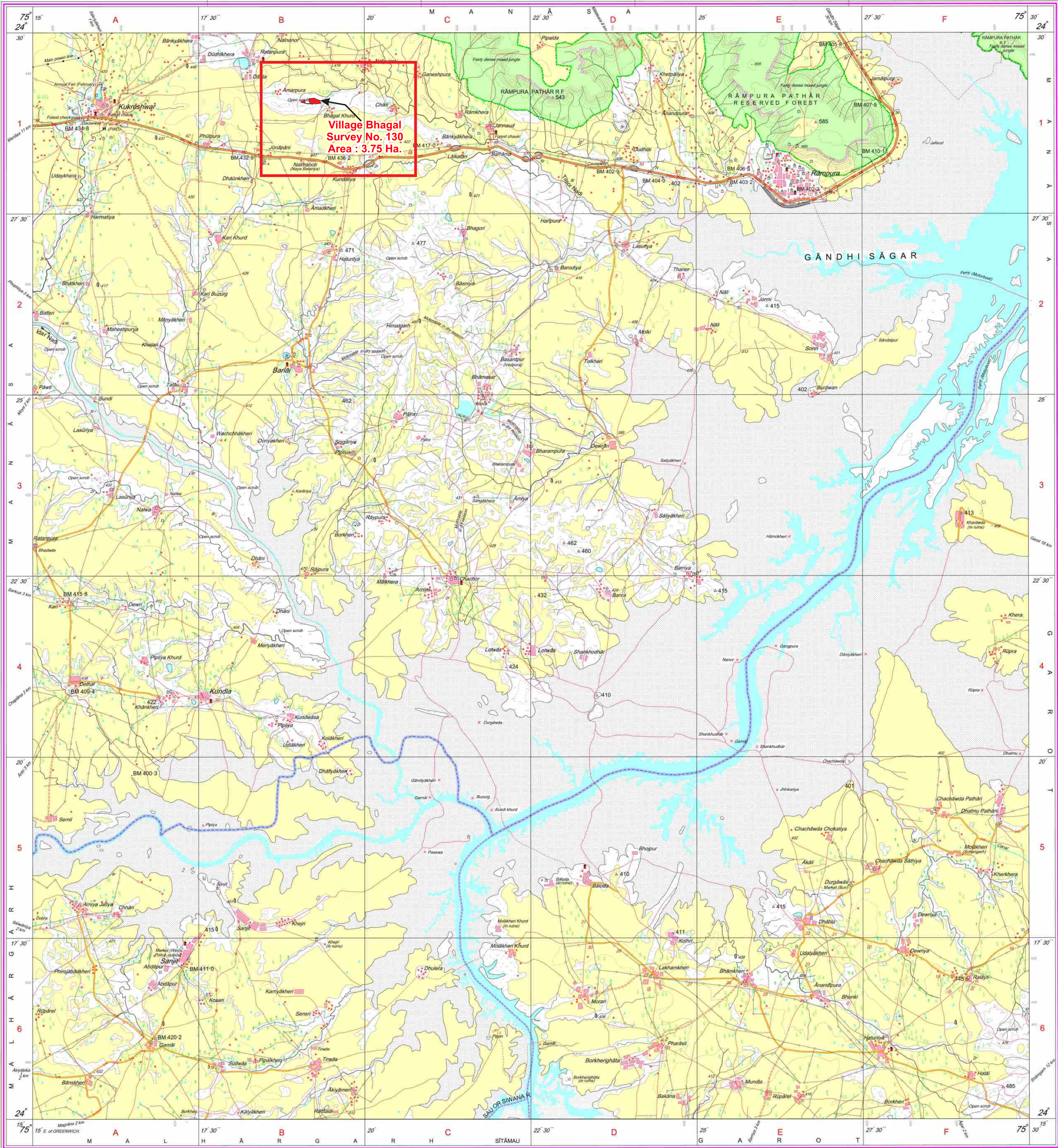
Jabalpur.

Fax : 0761 - 2644683

WEBSITE - www.surveyofindia.gov.in

Reproduction in whole or part by any means is prohibited  
without the written permission of Survey of India, the  
National Mapping Agency.

GOVERNMENT OF INDIA COPYRIGHT, 2009.



REG. No. SPG D'09 (Madhya Pradesh GDC-150,000).

माप के सम्बन्धित के दिशान में प्रकाशित.  
Published under the direction of Surveyor General of India.  
Survey of India, Hattibarkala Estate, Post Box No.37, Dehra Dun-248001 (Uttarakhand)  
Department of Science & Technology, Government of India.

(Himanshu Bhabhor)  
Sub Divisional Officer  
Water Resources Sub Division  
Rampura

(Vimal Shrivastva)  
Executive Engineer  
Water Resources Division  
Neemuch

PRINTED AT THE SOUTHERN PRINTING GROUP OF SURVEY OF INDIA.