

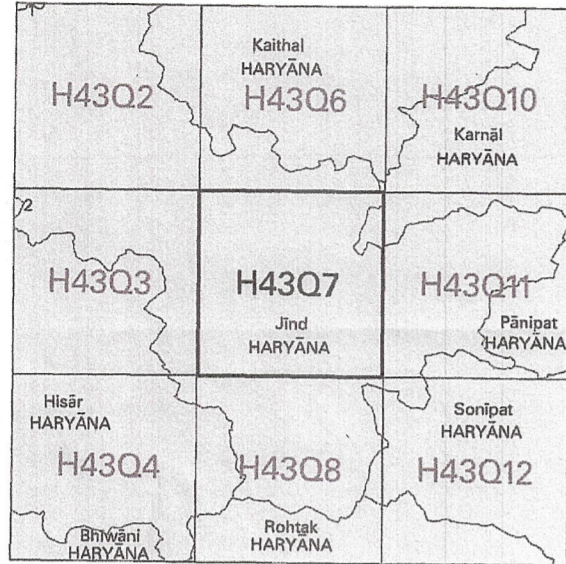


NOT FOR EXPORT

OPEN SERIES MAP

No. H43Q7

Scale 1:50,000



भारतीय सर्वेक्षण विभाग

SURVEY OF INDIA

1st Edition 2007.

Price Rs. 30

CONVENTIONAL SYMBOLS

- Express Highway with toll; with bridge with distance stone... Roads, metalled according to importance... Unmetalled road... Streams with track in bed; unforded. Canal... Dams; masonry or rock-filled; earthwork. Weir... River; dry with water channel; with island & rocks. Tidal river... Submerged rocks. Shoal. Swamp. Reeds... Walls: lined; unlined. Tube-well. Spring. Tanks: permanent; dry... Embankments: road or rail; tank. Broken ground... Railways, broad gauge: double; single with station; under constr... Railways, other gauges: double; single with distance stone; do... Mineral line or tramway. Kite. Cutting with tunnel... Contours with sub-features. Rocky slopes. Cliffs... Sand features: (dune) (strand-hills) (barrenment). (dunes) (strand-hills)... Towns or Villages: inhabited; deserted. Fort... Temples. Chhatra. Church. Mosque. Igth. Tomb. Graves... Lighthouses. Lightship. Buoy: lighted; unlighted. Anchorage... Mines. Vind on tolls. Grass. Scrub... Forest: primary; other. Ranch. Conifer. Bamboo. Other trees... Areas: cultivated; wooded. Surveyed area... Boundary: international... state; demarcated; undemarcated... district; subdivision, taluk or thik; forest... Pibers: surveyed; unlocated; village junction... Heights, triangulation; station; point; approximation... Bench-mark: geodetic; tertiary; canal... Post office. Telegraph office. Overhead tank... Rest house or inspection bungalow. Circuit house. Police station... Camping ground. Forest: reserved; protected... Social names: administrative; locality or tribal... Hospital. Dispensary. Veterinary hospital... Amusement. Holiday. Tourist site... Power line: with pylons surveyed; with poles unsurveyed

REFERENCES

MV 71 National Highway No. 71 Dep Depression

NOTES

Heights are in metres and above Indian mean sea level. Contours are approximates. A relative height, e.g., +3, represents the approximate height in metres between the top and bottom of a steep slope. Important Government buildings are shown in black with names. Tanks shown dry in this area usually contain water from July to March. Unmetalled roads and cart-roads in this sheet are generally motorable in dry season. Permission to use those along canals is required from the irrigation authorities. Canal distance stones are 1000 feet apart and every existing fifth stone is shown. A relative height e.g., 30' against a well, indicates its total depth in metres. 3,000-metre contour lines of the India Dam Project Survey are shown as tertiary Bench-marks (BM 225-1, 225-2, 225-3, 225-4, 225-5, 225-6, 225-7, 225-8, 225-9, 225-10, 225-11, 225-12, 225-13, 225-14, 225-15, 225-16, 225-17, 225-18, 225-19, 225-20, 225-21, 225-22, 225-23, 225-24, 225-25, 225-26, 225-27, 225-28, 225-29, 225-30, 225-31, 225-32, 225-33, 225-34, 225-35, 225-36, 225-37, 225-38, 225-39, 225-40, 225-41, 225-42, 225-43, 225-44, 225-45, 225-46, 225-47, 225-48, 225-49, 225-50, 225-51, 225-52, 225-53, 225-54, 225-55, 225-56, 225-57, 225-58, 225-59, 225-60, 225-61, 225-62, 225-63, 225-64, 225-65, 225-66, 225-67, 225-68, 225-69, 225-70, 225-71, 225-72, 225-73, 225-74, 225-75, 225-76, 225-77, 225-78, 225-79, 225-80, 225-81, 225-82, 225-83, 225-84, 225-85, 225-86, 225-87, 225-88, 225-89, 225-90, 225-91, 225-92, 225-93, 225-94, 225-95, 225-96, 225-97, 225-98, 225-99, 225-100, 225-101, 225-102, 225-103, 225-104, 225-105, 225-106, 225-107, 225-108, 225-109, 225-110, 225-111, 225-112, 225-113, 225-114, 225-115, 225-116, 225-117, 225-118, 225-119, 225-120, 225-121, 225-122, 225-123, 225-124, 225-125, 225-126, 225-127, 225-128, 225-129, 225-130, 225-131, 225-132, 225-133, 225-134, 225-135, 225-136, 225-137, 225-138, 225-139, 225-140, 225-141, 225-142, 225-143, 225-144, 225-145, 225-146, 225-147, 225-148, 225-149, 225-150, 225-151, 225-152, 225-153, 225-154, 225-155, 225-156, 225-157, 225-158, 225-159, 225-160, 225-161, 225-162, 225-163, 225-164, 225-165, 225-166, 225-167, 225-168, 225-169, 225-170, 225-171, 225-172, 225-173, 225-174, 225-175, 225-176, 225-177, 225-178, 225-179, 225-180, 225-181, 225-182, 225-183, 225-184, 225-185, 225-186, 225-187, 225-188, 225-189, 225-190, 225-191, 225-192, 225-193, 225-194, 225-195, 225-196, 225-197, 225-198, 225-199, 225-200, 225-201, 225-202, 225-203, 225-204, 225-205, 225-206, 225-207, 225-208, 225-209, 225-210, 225-211, 225-212, 225-213, 225-214, 225-215, 225-216, 225-217, 225-218, 225-219, 225-220, 225-221, 225-222, 225-223, 225-224, 225-225, 225-226, 225-227, 225-228, 225-229, 225-230, 225-231, 225-232, 225-233, 225-234, 225-235, 225-236, 225-237, 225-238, 225-239, 225-240, 225-241, 225-242, 225-243, 225-244, 225-245, 225-246, 225-247, 225-248, 225-249, 225-250, 225-251, 225-252, 225-253, 225-254, 225-255, 225-256, 225-257, 225-258, 225-259, 225-260, 225-261, 225-262, 225-263, 225-264, 225-265, 225-266, 225-267, 225-268, 225-269, 225-270, 225-271, 225-272, 225-273, 225-274, 225-275, 225-276, 225-277, 225-278, 225-279, 225-280, 225-281, 225-282, 225-283, 225-284, 225-285, 225-286, 225-287, 225-288, 225-289, 225-290, 225-291, 225-292, 225-293, 225-294, 225-295, 225-296, 225-297, 225-298, 225-299, 225-300, 225-301, 225-302, 225-303, 225-304, 225-305, 225-306, 225-307, 225-308, 225-309, 225-310, 225-311, 225-312, 225-313, 225-314, 225-315, 225-316, 225-317, 225-318, 225-319, 225-320, 225-321, 225-322, 225-323, 225-324, 225-325, 225-326, 225-327, 225-328, 225-329, 225-330, 225-331, 225-332, 225-333, 225-334, 225-335, 225-336, 225-337, 225-338, 225-339, 225-340, 225-341, 225-342, 225-343, 225-344, 225-345, 225-346, 225-347, 225-348, 225-349, 225-350, 225-351, 225-352, 225-353, 225-354, 225-355, 225-356, 225-357, 225-358, 225-359, 225-360, 225-361, 225-362, 225-363, 225-364, 225-365, 225-366, 225-367, 225-368, 225-369, 225-370, 225-371, 225-372, 225-373, 225-374, 225-375, 225-376, 225-377, 225-378, 225-379, 225-380, 225-381, 225-382, 225-383, 225-384, 225-385, 225-386, 225-387, 225-388, 225-389, 225-390, 225-391, 225-392, 225-393, 225-394, 225-395, 225-396, 225-397, 225-398, 225-399, 225-400, 225-401, 225-402, 225-403, 225-404, 225-405, 225-406, 225-407, 225-408, 225-409, 225-410, 225-411, 225-412, 225-413, 225-414, 225-415, 225-416, 225-417, 225-418, 225-419, 225-420, 225-421, 225-422, 225-423, 225-424, 225-425, 225-426, 225-427, 225-428, 225-429, 225-430, 225-431, 225-432, 225-433, 225-434, 225-435, 225-436, 225-437, 225-438, 225-439, 225-440, 225-441, 225-442, 225-443, 225-444, 225-445, 225-446, 225-447, 225-448, 225-449, 225-450, 225-451, 225-452, 225-453, 225-454, 225-455, 225-456, 225-457, 225-458, 225-459, 225-460, 225-461, 225-462, 225-463, 225-464, 225-465, 225-466, 225-467, 225-468, 225-469, 225-470, 225-471, 225-472, 225-473, 225-474, 225-475, 225-476, 225-477, 225-478, 225-479, 225-480, 225-481, 225-482, 225-483, 225-484, 225-485, 225-486, 225-487, 225-488, 225-489, 225-490, 225-491, 225-492, 225-493, 225-494, 225-495, 225-496, 225-497, 225-498, 225-499, 225-500, 225-501, 225-502, 225-503, 225-504, 225-505, 225-506, 225-507, 225-508, 225-509, 225-510, 225-511, 225-512, 225-513, 225-514, 225-515, 225-516, 225-517, 225-518, 225-519, 225-520, 225-521, 225-522, 225-523, 225-524, 225-525, 225-526, 225-527, 225-528, 225-529, 225-530, 225-531, 225-532, 225-533, 225-534, 225-535, 225-536, 225-537, 225-538, 225-539, 225-540, 225-541, 225-542, 225-543, 225-544, 225-545, 225-546, 225-547, 225-548, 225-549, 225-550, 225-551, 225-552, 225-553, 225-554, 225-555, 225-556, 225-557, 225-558, 225-559, 225-560, 225-561, 225-562, 225-563, 225-564, 225-565, 225-566, 225-567, 225-568, 225-569, 225-570, 225-571, 225-572, 225-573, 225-574, 225-575, 225-576, 225-577, 225-578, 225-579, 225-580, 225-581, 225-582, 225-583, 225-584, 225-585, 225-586, 225-587, 225-588, 225-589, 225-590, 225-591, 225-592, 225-593, 225-594, 225-595, 225-596, 225-597, 225-598, 225-599, 225-600, 225-601, 225-602, 225-603, 225-604, 225-605, 225-606, 225-607, 225-608, 225-609, 225-610, 225-611, 225-612, 225-613, 225-614, 225-615, 225-616, 225-617, 225-618, 225-619, 225-620, 225-621, 225-622, 225-623, 225-624, 225-625, 225-626, 225-627, 225-628, 225-629, 225-630, 225-631, 225-632, 225-633, 225-634, 225-635, 225-636, 225-637, 225-638, 225-639, 225-640, 225-641, 225-642, 225-643, 225-644, 225-645, 225-646, 225-647, 225-648, 225-649, 225-650, 225-651, 225-652, 225-653, 225-654, 225-655, 225-656, 225-657, 225-658, 225-659, 225-660, 225-661, 225-662, 225-663, 225-664, 225-665, 225-666, 225-667, 225-668, 225-669, 225-670, 225-671, 225-672, 225-673, 225-674, 225-675, 225-676, 225-677, 225-678, 225-679, 225-680, 225-681, 225-682, 225-683, 225-684, 225-685, 225-686, 225-687, 225-688, 225-689, 225-690, 225-691, 225-692, 225-693, 225-694, 225-695, 225-696, 225-697, 225-698, 225-699, 225-700, 225-701, 225-702, 225-703, 225-704, 225-705, 225-706, 225-707, 225-708, 225-709, 225-710, 225-711, 225-712, 225-713, 225-714, 225-715, 225-716, 225-717, 225-718, 225-719, 225-720, 225-721, 225-722, 225-723, 225-724, 225-725, 225-726, 225-727, 225-728, 225-729, 225-730, 225-731, 225-732, 225-733, 225-734, 225-735, 225-736, 225-737, 225-738, 225-739, 225-740, 225-741, 225-742, 225-743, 225-744, 225-745, 225-746, 225-747, 225-748, 225-749, 225-750, 225-751, 225-752, 225-753, 225-754, 225-755, 225-756, 225-757, 225-758, 225-759, 225-760, 225-761, 225-762, 225-763, 225-764, 225-765, 225-766, 225-767, 225-768, 225-769, 225-770, 225-771, 225-772, 225-773, 225-774, 225-775, 225-776, 225-777, 225-778, 225-779, 225-780, 225-781, 225-782, 225-783, 225-784, 225-785, 225-786, 225-787, 225-788, 225-789, 225-790, 225-791, 225-792, 225-793, 225-794, 225-795, 225-796, 225-797, 225-798, 225-799, 225-800, 225-801, 225-802, 225-803, 225-804, 225-805, 225-806, 225-807, 225-808, 225-809, 225-810, 225-811, 225-812, 225-813, 225-814, 225-815, 225-816, 225-817, 225-818, 225-819, 225-820, 225-821, 225-822, 225-823, 225-824, 225-825, 225-826, 225-827, 225-828, 225-829, 225-830, 225-831, 225-832, 225-833, 225-834, 225-835, 225-836, 225-837, 225-838, 225-839, 225-840, 225-841, 225-842, 225-843, 225-844, 225-845, 225-846, 225-847, 225-848, 225-849, 225-850, 225-851, 225-852, 225-853, 225-854, 225-855, 225-856, 225-857, 225-858, 225-859, 225-860, 225-861, 225-862, 225-863, 225-864, 225-865, 225-866, 225-867, 225-868, 225-869, 225-870, 225-871, 225-872, 225-873, 225-874, 225-875, 225-876, 225-877, 225-878, 225-879, 225-880, 225-881, 225-882, 225-883, 225-884, 225-885, 225-886, 225-887, 225-888, 225-889, 225-890, 225-891, 225-892, 225-893, 225-894, 225-895, 225-896, 225-897, 225-898, 225-899, 225-900, 225-901, 225-902, 225-903, 225-904, 225-905, 225-906, 225-907, 225-908, 225-909, 225-910, 225-911, 225-912, 225-913, 225-914, 225-915, 225-916, 225-917, 225-918, 225-919, 225-920, 225-921, 225-922, 225-923, 225-924, 225-925, 225-926, 225-927, 225-928, 225-929, 225-930, 225-931, 225-932, 225-933, 225-934, 225-935, 225-936, 225-937, 225-938, 225-939, 225-940, 225-941, 225-942, 225-943, 225-944, 225-945, 225-946, 225-947, 225-948, 225-949, 225-950, 225-951, 225-952, 225-953, 225-954, 225-955, 225-956, 225-957, 225-958, 225-959, 225-960, 225-961, 225-962, 225-963, 225-964, 225-965, 225-966, 225-967, 225-968, 225-969, 225-970, 225-971, 225-972, 225-973, 225-974, 225-975, 225-976, 225-977, 225-978, 225-979, 225-980, 225-981, 225-982, 225-983, 225-984, 225-985, 225-986, 225-987, 225-988, 225-989, 225-990, 225-991, 225-992, 225-993, 225-994, 225-995, 225-996, 225-997, 225-998, 225-999, 225-1000

COMPILED INDEX

A. Surveyed during 1989-90. Updated for major details during 2005-06.

Projection - UTM Datum - WGS 84

Magnetic Variation from True North about 3/4 East in 2000. (Increasing by about 2' annually).

1:50,000

500 m to 1 cm 2 cm to 1 km

CONTOUR INTERVAL 10 METRES

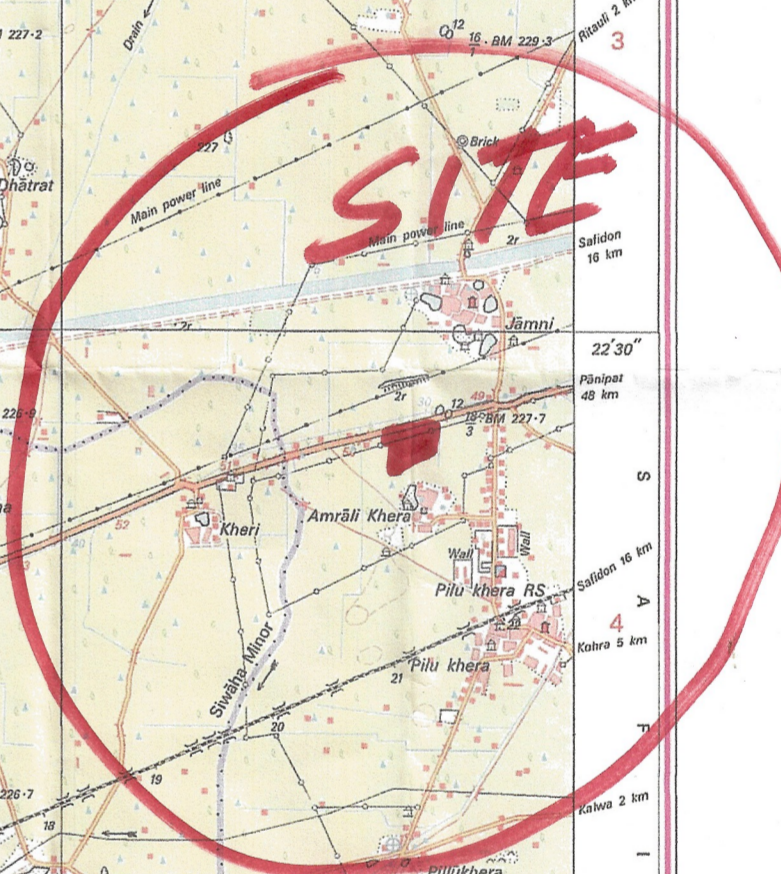
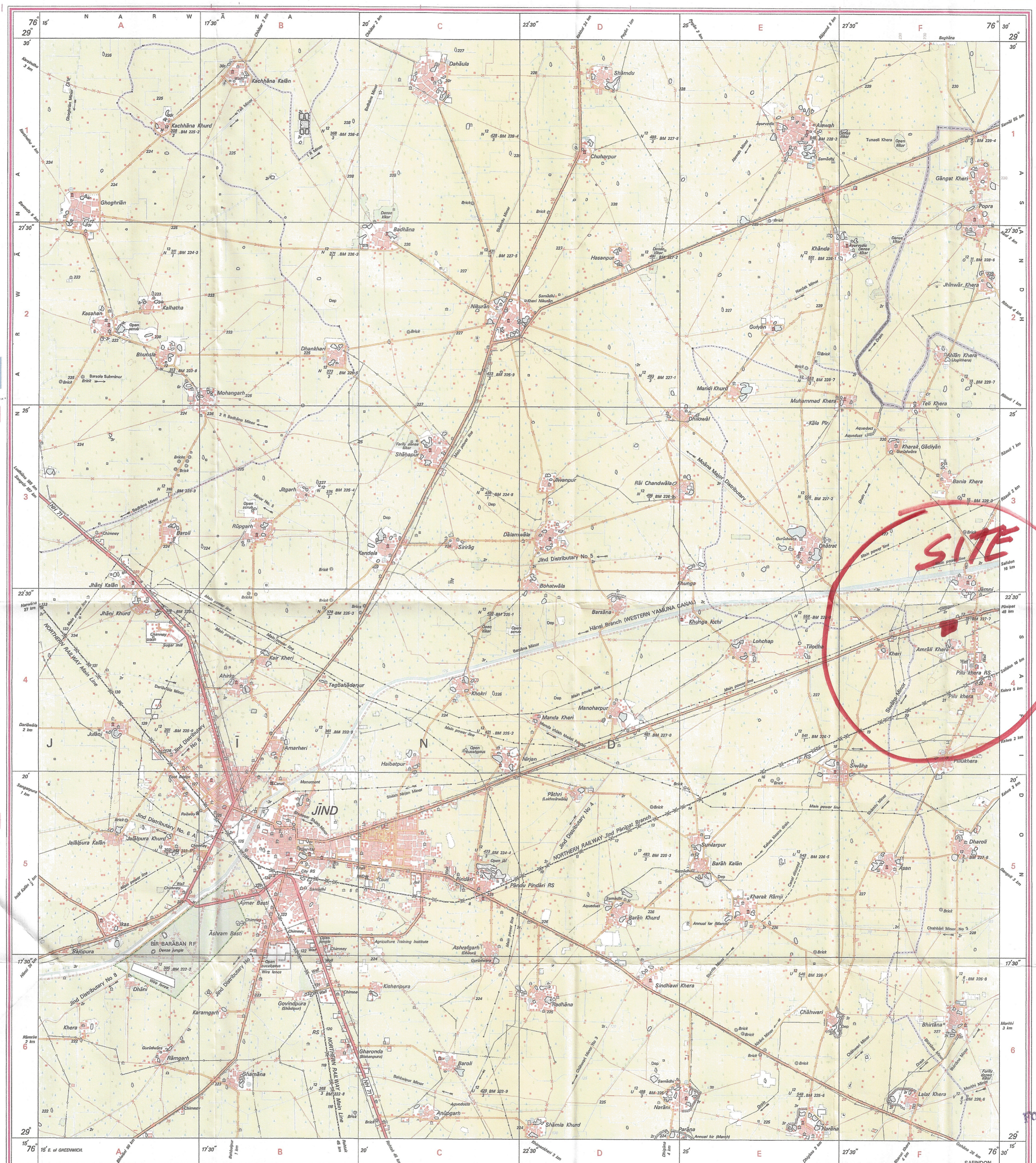
For further details about this map, please contact

Director Haryana Geo-Spatial Data Centre Survey of India, Sector 32 A Chandigarh. Fax : 0172 - 2604671

WEBSITE - www.surveyofindia.gov.in

Reproduction in whole or part by any means is prohibited without the written permission of Survey of India, the National Mapping Agency.

GOVERNMENT OF INDIA COPYRIGHT, 2007.



For K.K. Feeds Prop. Captain Khandu