

VILLAGE MAP OF NIDIGALU VILLAGE WITH SURVEY NO AND FOREST AREA DETAILS



PROPOSED PIPE LINE ALIGNMENT					
S.NO	LATITUDE	LONGITUDE	S.NO	LATITUDE	LONGITUDE
P0	14.156681	77.065323	PA0	14.156667	77.065319
P1	14.156673	77.065373	PA1	14.156659	77.065376
P2	14.156724	77.065552	PA2	14.156710	77.065554
P3	14.156745	77.065736	PA3	14.156731	77.065736
P4	14.156742	77.065922	PA4	14.156728	77.065920
P5	14.156709	77.066106	PA5	14.156696	77.066102
P6	14.156654	77.066282	PA6	14.156639	77.066280
P7	14.156630	77.066464	PA7	14.156616	77.066462
P8	14.156769	77.066643	PA8	14.156676	77.066650
P9	14.156682	77.066797	PA9	14.156757	77.066797
P10	14.156538	77.066957	PA10	14.156674	77.066948
P11	14.156434	77.067063	PA11	14.156530	77.067053
P12	14.156308	77.067210	PA12	14.156419	77.067207
P13	14.156131	77.067387	PA13	14.156377	77.067388
P14	14.156324	77.067521	PA14	14.156334	77.067509
P15	14.156163	77.067477	PA15	14.156166	77.067463
P16	14.155985	77.067441	PA16	14.155986	77.067427
P17	14.155786	77.067426	PA17	14.155787	77.067412
P18	14.155687	77.067406	PA18	14.155693	77.067393

NEW PROPOSAL FOR ADDITIONAL USAGE OF FOREST LAND WHICH IS NOT APPLIED IN ONLINE WHICH IN SITE SPECIFICATION

APPROACH ROAD ALONG THE PIPE LINE ALIGNMENT & ADDITIONAL APPROACH ROAD					
S.NO	LATITUDE	LONGITUDE	S.NO	LATITUDE	LONGITUDE
R0	14.156643	77.065311	PA0	14.156667	77.065319
R1	14.156634	77.065382	PA1	14.156659	77.065376
R2	14.156686	77.065556	PA2	14.156710	77.065554
R3	14.156705	77.065736	PA3	14.156731	77.065736
R4	14.156702	77.065917	PA4	14.156728	77.065920
R5	14.156671	77.066094	PA5	14.156696	77.066102
R6	14.156611	77.066274	PA6	14.156639	77.066280
R7	14.156590	77.066458	PA7	14.156616	77.066462
R8	14.156641	77.066673	PA8	14.156676	77.066650
R9	14.156716	77.066791	PA9	14.156757	77.066797
R10	14.156657	77.066922	PA10	14.156674	77.066948
R11	14.156501	77.067028	PA11	14.156530	77.067053
R12	14.156390	77.067193	PA12	14.156419	77.067207
R13	14.156343	77.067388	PA13	14.156377	77.067388
R14	14.156338	77.067482	PA14	14.156334	77.067509
R15	14.156135	77.067430	PA15	14.156166	77.067463
R16	14.155956	77.067398	PA16	14.155986	77.067427
R17	14.155790	77.067381	PA17	14.155787	77.067412
R18	14.155703	77.067373	PA18	14.155693	77.067393
R19	14.156249	77.067459	PA19	14.156338	77.067482
R20	14.156184	77.067178	RA20	14.156253	77.067163
R21	14.156172	77.067234	RA21	14.156132	77.067048
R22	14.156122	77.067400	RA22	14.156072	77.067382
R23	14.156061	77.067577	RA23	14.156009	77.067550
R24	14.155974	77.067734	RA24	14.155936	77.067707
R25	14.155865	77.067868	RA25	14.155823	77.067834
R26	14.155748	77.067998	RA26	14.155732	77.067929
R27	14.155562	77.067965	RA27	14.155631	77.067928
R28	14.155594	77.067803	RA28	14.155660	77.067825
R29	14.155639	77.067621	RA29	14.155696	77.067635
R30	14.155674	77.067489	RA30	14.155728	77.067506

ZBR 02 BOUNDARY		
S.L No	Latitude	Longitude
1	14.155650	77.067482
2	14.155729	77.067315
3	14.155566	77.067234
4	14.155487	77.067401

LEGEND	
PIPE LINE IN FOREST	
PIPE LINE IN NON FOREST	

Superintending Engineer  
Rural Drinking Water & Sanitation Department  
Bangalore Circle



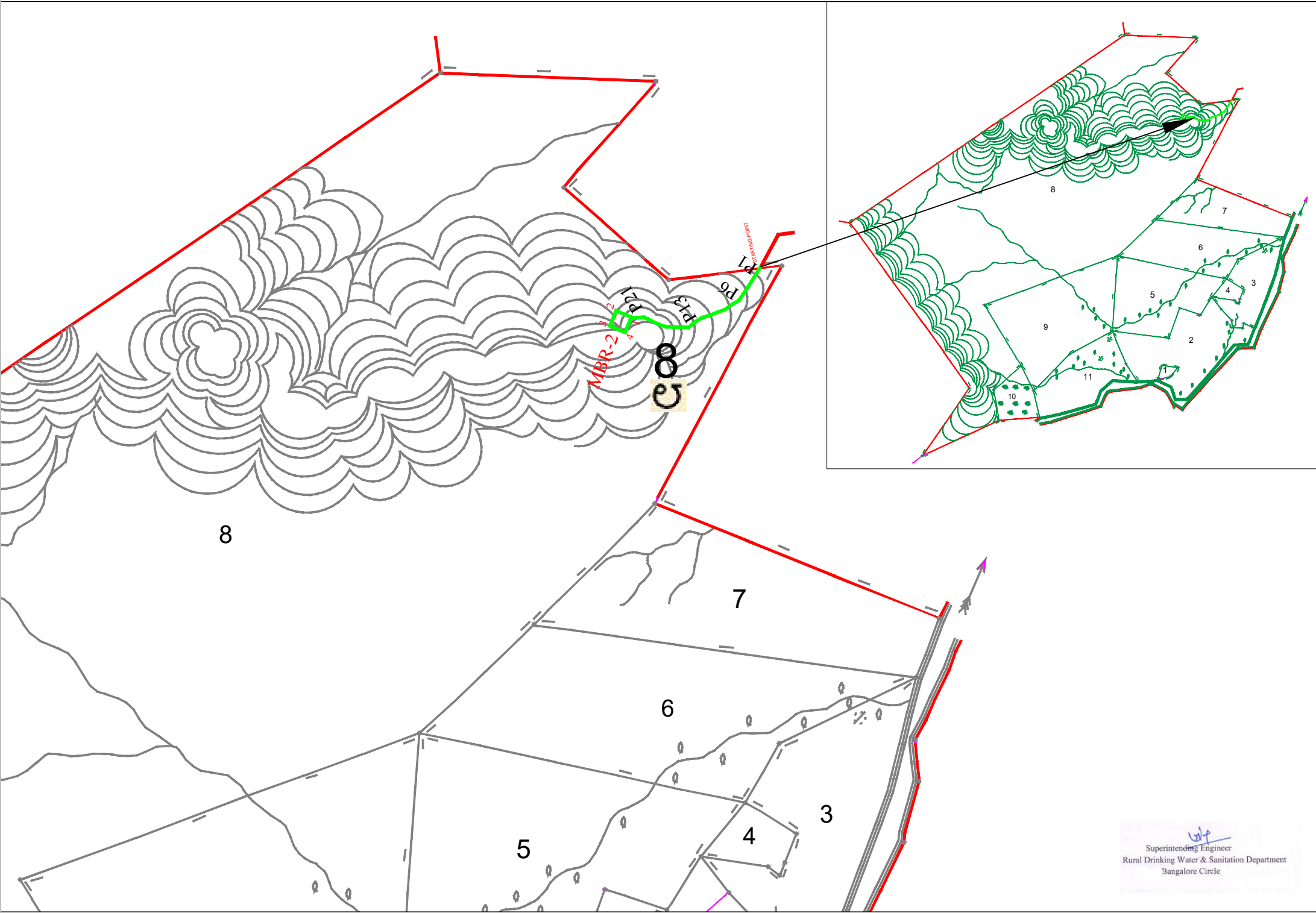
AREA STATEMENT	
FOREST AREA = 0.349 Hectare	
NON FOREST AREA = 0.000 Hectare	

AREA STATEMENT FOR FOREST LAND IN THE PROJECT												
SL NO	DISTRICT	DIVISION	Taluk	RANGE / TEHSIL / VILLAGE	KHASRA / SURVEY OR COMPARATMENT NUMBER OF KM. STONE	COMPONENTS DETAILS	UNIT	Details				REMARKS
								LENGTH (L)	WIDTH (W)	AERA IN SQM	AERA IN HECTAER	
1	TUMAKURU	TUMAKURU	PAVAGADA	NIDIGALU	SY No: 1	PROPOSED PIPE LINE	M	335.8	1.50	503.6	0.050	
2	TUMAKURU	TUMAKURU	PAVAGADA	NIDIGALU	SY No: 1	ZBR -2 STRUCTURE	M	20.0	20.00	400.0	0.040	
3	TUMAKURU	TUMAKURU	PAVAGADA	NIDIGALU	SY No: 1	ALONG THE PIPE LINE APPROACH ROAD	M	330.3	3.29	1,086.6	0.109	Avg Width
4	TUMAKURU	TUMAKURU	PAVAGADA	NIDIGALU	SY No: 1	APPROACH ROAD	M	225.2	6.67	1,502.1	0.150	Avg Width
						TOTAL=		911.2	31.5	3492.3	0.349	

PROJECT :	Laying of Pipe line and construction of water tanks in Bellary Forest Division, Chitradurga Forest division and Tumakuru Forest Division for Providing Drinking Water facility to Rural Habitations of Bellary, Chitradurga & Tumakuru Districts				
USER AGENCY	SUPERINTENDING ENGINEER, BEANGALUR CIRCLE, RURAL DRINKING WATER & SANITATION DEPARTMENT (RDW & SD)				
		VILLAGE MAP OF NIDIGALLU VILLAGE WITH SURVEY NO AND FOREST AREA DETAILS			
SUPERINTENDING ENGINEER					
DRAWING No.		SHEET: A2	02 OF 02	REVISION:	



VILLAGE MAP OF THIMALAPURA VILLAGE WITH SURVEY NO AND FOREST AREA DETAILS



AREA STATEMENT FOR FOREST LAND IN THE PROJECT												
SL NO	DISTRICT	DIVISION	Taluk	RANGE / TEHSIL / VILLAGE	KHASRA / SURVEY OR COMPARATMENT NUMBER OF KM. STONE	COMPONENTS DETAILS	UNIT	Details				REMARKS
								LENGTH (L)	WIDTH (W)	AERA IN SQM	AERA IN HECTAER	
1	TUMAKURU	TUMAKURU	PAVAGADA	THIMALAPURA	SY No: 8	PROPOSED PIPE LINE	M	384.3	1.50	576.4	0.058	
2	TUMAKURU	TUMAKURU	PAVAGADA	THIMALAPURA	SY No: 8	MBR -2 STRUCTURE	M	40.0	40.00	1,600.0	0.160	
3	TUMAKURU	TUMAKURU	PAVAGADA	THIMALAPURA	SY No: 8	ADDITIONAL APPROCH ROAD	M	387.1	4.25	1,645.2	0.165	Avg Width
TOTAL=								811.4	45.8	3821.6	0.382	

PROPOSED PIPE LINE ALIGNMENT					
S.NO	LATITUDE	LONGITUDE	S.NO	LATITUDE	LONGITUDE
P1	14.162298	77.118602	PA1	14.162306	77.118590
P2	14.162145	77.118502	PA2	14.162156	77.118492
P3	14.161992	77.118402	PA3	14.162000	77.118391
P4	14.161840	77.118303	PA4	14.161848	77.118290
P5	14.161692	77.118197	PA5	14.161701	77.118185
P6	14.161548	77.118084	PA6	14.161555	77.118073
P7	14.161453	77.117927	PA7	14.161464	77.117921
P8	14.161350	77.117772	PA8	14.161364	77.117767
P9	14.161290	77.117598	PA9	14.161304	77.117593
P10	14.161229	77.117431	PA10	14.161240	77.117421
P11	14.161173	77.117250	PA11	14.161185	77.117242
P12	14.161078	77.117095	PA12	14.161088	77.117084
P13	14.160970	77.116943	PA13	14.160984	77.116941
P14	14.160977	77.116758	PA14	14.160993	77.116758
P15	14.160984	77.116572	PA15	14.160998	77.116572
P16	14.161010	77.116389	PA16	14.161022	77.116393
P17	14.161076	77.116216	PA17	14.161088	77.116222
P18	14.161155	77.116050	PA18	14.161167	77.116056
P19	14.161199	77.115880	PA19	14.161213	77.115879
P20	14.161180	77.115697	PA20	14.161192	77.115695
P21	14.161175	77.115651	PA21	14.161188	77.115657

NEW PROPOSAL FOR ADDITIONAL USAGE OF FOREST LAND WHICH IS NOT APPLIED IN ONLINE WHICH IN SITE SPECIFICATION					
APPROACH ROAD ALONG THE PIPE LINE ALIGNMENT					
S.NO	LATITUDE	LONGITUDE	S.NO	LATITUDE	LONGITUDE
R1	14.162275	77.118630	P1	14.162298	77.118602
R2	14.162120	77.118527	P2	14.162145	77.118502
R3	14.161977	77.118425	P3	14.161992	77.118402
R4	14.161828	77.118326	P4	14.161840	77.118303
R5	14.161676	77.118218	P5	14.161692	77.118197
R6	14.161529	77.118110	P6	14.161548	77.118084
R7	14.161425	77.117943	P7	14.161453	77.117927
R8	14.161325	77.117781	P8	14.161350	77.117772
R9	14.161265	77.117607	P9	14.161290	77.117598
R10	14.161202	77.117456	P10	14.161229	77.117431
R11	14.161146	77.117267	P11	14.161173	77.117250
R12	14.161056	77.117116	P12	14.161078	77.117095
R13	14.160926	77.116948	P13	14.160970	77.116943
R14	14.160943	77.116751	P14	14.160977	77.116758
R15	14.160952	77.116571	P15	14.160984	77.116572
R16	14.160968	77.116374	P16	14.161010	77.116389
R17	14.161036	77.116193	P17	14.161076	77.116216
R18	14.161090	77.116018	P18	14.161155	77.116050
R19	14.161119	77.115886	P19	14.161199	77.115880
R20	14.161106	77.115713	P20	14.161180	77.115697
R21	14.161099	77.115618	P21	14.161175	77.115651

MBR 02 BOUNDARY		
S.I.No	Latitude	Longitude
1	14.161223	77.115672
2	14.161364	77.115331
3	14.161031	77.115186
4	14.160890	77.115527

LEGEND	
PIPE LINE IN FOREST	
PIPE LINE IN NON FOREST	

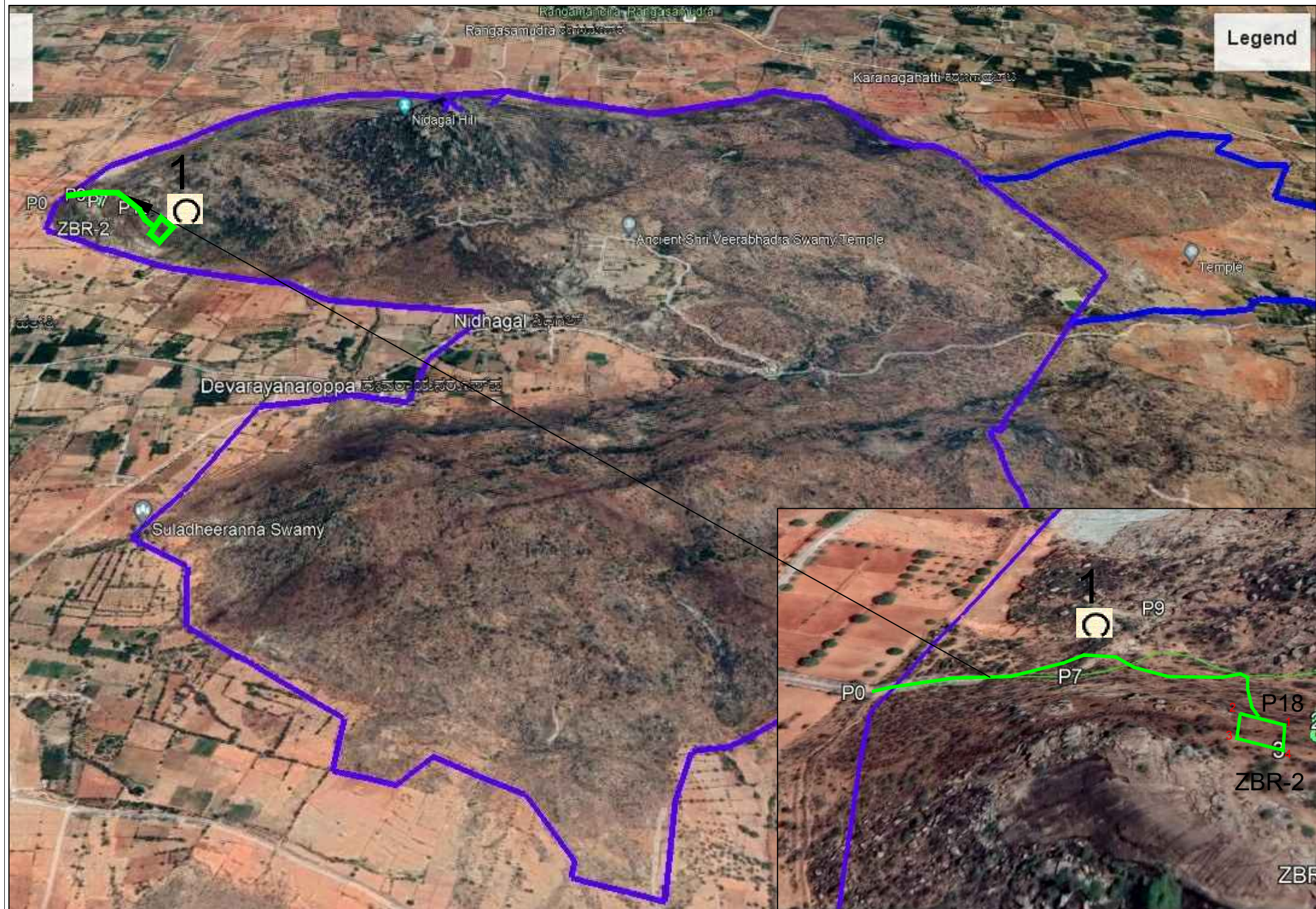


AREA STATEMENT	
FOREST AREA = 0.382 Hectare	
NON FOREST AREA = 0.000 Hectare	

PROJECT :	Laying of Pipe line and construction of water tanks in Bellary Forest Division, Chitradurga Forest division and Tumakuru Forest Division for Providing Drinking Water facility to Rural Habitations of Billary, Chitradurga & Tumakuru Districts
USER AGENCY :	SUPERINTENDING ENGINEER, BEANGALUR CIRCLE, RURAL DRINKING WATER & SANITATION DEPARTMENT (RDW & SD)
SUPERINTENDING ENGINEER	VILLAGE MAP OF THIMALAPURA VILLAGE WITH SURVEY NO AND FOREST AREA DETAILS
DRAWING No. _____ SHEET: A2 02 OF 02 REVISION: _____	
RELEASED FOR <input type="checkbox"/> PRELIMINARY <input type="checkbox"/> TENDER <input type="checkbox"/> INFORMATION <input checked="" type="checkbox"/> APPROVAL <input type="checkbox"/> CONSTRUCTION	



# GOOGLE MAP OF NIDIGALU VILLAGE WITH SURVEY NO AND FOREST AREA DETAILS



PROPOSED PIPE LINE ALIGNMENT					
S.NO	LATITUDE	LONGITUDE	S.NO	LATITUDE	LONGITUDE
P0	14.156681	77.065323	PA0	14.156667	77.065319
P1	14.156673	77.065373	PA1	14.156659	77.065376
P2	14.156724	77.065552	PA2	14.156710	77.065554
P3	14.156745	77.065736	PA3	14.156731	77.065736
P4	14.156742	77.065922	PA4	14.156728	77.065920
P5	14.156709	77.066106	PA5	14.156696	77.066102
P6	14.156654	77.066282	PA6	14.156639	77.066280
P7	14.156630	77.066464	PA7	14.156616	77.066462
P8	14.156769	77.066643	PA8	14.156676	77.066650
P9	14.156682	77.066797	PA9	14.156757	77.066797
P10	14.156538	77.066957	PA10	14.156674	77.066948
P11	14.156434	77.067063	PA11	14.156530	77.067053
P12	14.156308	77.067210	PA12	14.156419	77.067207
P13	14.156131	77.067387	PA13	14.156377	77.067388
P14	14.156324	77.067521	PA14	14.156334	77.067509
P15	14.156163	77.067477	PA15	14.156166	77.067463
P16	14.155985	77.067441	PA16	14.155986	77.067427
P17	14.155786	77.067426	PA17	14.155787	77.067412
P18	14.155687	77.067406	PA18	14.155693	77.067393

NEW PROPOSAL FOR ADDITIONAL USAGE OF FOREST LAND WHICH IS NOT APPLIED IN ONLINE WHICH IN SITE SPECIFICATION					
APPROACH ROAD ALONG THE PIPE LINE ALIGNMENT & ADDITIONAL APPROACH ROAD					
S.NO	LATITUDE	LONGITUDE	S.NO	LATITUDE	LONGITUDE
R0	14.156643	77.065311	PA0	14.156667	77.065319
R1	14.156634	77.065382	PA1	14.156659	77.065376
R2	14.156686	77.065556	PA2	14.156710	77.065554
R3	14.156705	77.065736	PA3	14.156731	77.065736
R4	14.156702	77.065917	PA4	14.156728	77.065920
R5	14.156671	77.066094	PA5	14.156696	77.066102
R6	14.156611	77.066274	PA6	14.156639	77.066280
R7	14.156590	77.066458	PA7	14.156616	77.066462
R8	14.156641	77.066673	PA8	14.156676	77.066650
R9	14.156716	77.066791	PA9	14.156757	77.066797
R10	14.156657	77.066922	PA10	14.156674	77.066948
R11	14.156501	77.067028	PA11	14.156530	77.067053
R12	14.156390	77.067193	PA12	14.156419	77.067207
R13	14.156343	77.067388	PA13	14.156377	77.067388
R14	14.156338	77.067482	PA14	14.156334	77.067509
R15	14.156135	77.067430	PA15	14.156166	77.067463
R16	14.155956	77.067398	PA16	14.155986	77.067427
R17	14.155790	77.067381	PA17	14.155787	77.067412
R18	14.155703	77.067373	PA18	14.155693	77.067393
R19	14.156249	77.067459	RA19	14.156338	77.067482
R20	14.156184	77.067178	RA20	14.156253	77.067163
R21	14.156172	77.067234	RA21	14.156132	77.067048
R22	14.156122	77.067400	RA22	14.156072	77.067382
R23	14.156061	77.067577	RA23	14.156009	77.067550
R24	14.155974	77.067734	RA24	14.155936	77.067707
R25	14.155865	77.067868	RA25	14.155823	77.067834
R26	14.155748	77.067998	RA26	14.155732	77.067929
R27	14.155562	77.067965	RA27	14.155631	77.067928
R28	14.155594	77.067803	RA28	14.155660	77.067825
R29	14.155639	77.067621	RA29	14.155696	77.067635
R30	14.155674	77.067489	RA30	14.155728	77.067506

ZBR 02 BOUNDARY		
S.L No	Latitude	Longitude
1	14.155650	77.067482
2	14.155729	77.067315
3	14.155566	77.067234
4	14.155487	77.067401

LEGEND	
PIPE LINE IN FOREST	
PIPE LINE IN NON FOREST	



AREA STATEMENT	
FOREST AREA = 0.349 Hectare	
NON FOREST AREA = 0.000 Hectare	

AREA STATEMENT FOR FOREST LAND IN THE PROJECT													
SL NO	DISTRICT	DIVISION	Taluk	RANGE / TEHSIL / VILLAGE	KHASRA / SURVEY OR COMPARATMENT NUMBER OF KM. STONE	COMPONENTS DETAILS	UNIT	Details					REMARK
								LENGTH (L)	WIDTH (W)	AERA IN SQM	AERA IN HECTAER		
1	TUMAKURU	TUMAKURU	PAVAGADA	NIDIGALU	SY No: 1	PROPOSED PIPE LINE	M	335.8	1.50	503.6	0.050		
2	TUMAKURU	TUMAKURU	PAVAGADA	NIDIGALU	SY No: 1	ZBR -2 STRUCTURE	M	20.0	20.00	400.0	0.040		
3	TUMAKURU	TUMAKURU	PAVAGADA	NIDIGALU	SY No: 1	ALONG THE PIPE LINE APPROACH ROAD	M	330.3	3.29	1,086.6	0.109	Avg Width	
4	TUMAKURU	TUMAKURU	PAVAGADA	NIDIGALU	SY No: 1	APPROACH ROAD	M	225.2	6.67	1,502.1	0.150	Avg Width	
						TOTAL=		911.2	31.5	3492.3	0.349		

Superintending Engineer  
Rural Drinking Water & Sanitation Department  
Bangalore Circle

PROJECT :	Laying of Pipe line and construction of water tanks in Bellary Forest Division, Chitradurga Forest division and Tumakuru Forest Division for Providing Drinking Water facility to Rural Habitations of Bellary, Chitradurga & Tumakuru Districts
USER AGENCY	SUPERINTENDING ENGINEER, BEANGALUR CIRCLE, RURAL DRINKING WATER & SANITATION DEPARTMENT (RDW & SD)
SUPERINTENDING ENGINEER	GOOGLE MAP OF NIDIGALLU VILLAGE WITH SURVEY NO AND FOREST AREA DETAILS
DRAWING No.	SHEET: A2 / 02 OF 02 / REVISION: 1
RELEASED FOR	<input type="checkbox"/> PRELIMINARY <input type="checkbox"/> TENDER <input type="checkbox"/> INFORMATION <input checked="" type="checkbox"/> APPROVAL <input type="checkbox"/> CONSTRUCTION



GOOGLE MAP OF THIMALAPURA VILLAGE WITH SURVEY NO AND FOREST AREA DETAILS



AREA STATEMENT FOR FOREST LAND IN THE PROJECT

SL NO	DISTRICT	DIVISION	Taluk	RANGE / TEHSIL / VILLAGE	KHASRA / SURVEY OR COMPARATMENT NUMBER OF KM. STONE	COMPONENTS DETAILS	UNIT	Details				REMARKS
								LENGTH (L)	WIDTH (W)	AERA IN SQM	AERA IN HECTAER	
1	TUMAKURU	TUMAKURU	PAVAGADA	THIMALAPURA	SY No: 8	PROPOSED PIPE LINE	M	384.3	1.50	576.4	0.058	
2	TUMAKURU	TUMAKURU	PAVAGADA	THIMALAPURA	SY No: 8	MBR -2 STRUCTURE	M	40.0	40.00	1,600.0	0.160	
3	TUMAKURU	TUMAKURU	PAVAGADA	THIMALAPURA	SY No: 8	ADDITIONAL APPROCH ROAD	M	387.1	4.25	1,645.2	0.165	Avg Width
TOTAL=								811.4	45.8	3821.6	0.382	

Superintending Engineer  
Rural Drinking Water & Sanitation Department  
Bangalore Circle

PROPOSED PIPE LINE ALIGNMENT					
S.NO	LATITUDE	LONGITUDE	S.NO	LATITUDE	LONGITUDE
P1	14.162298	77.118602	PA1	14.162306	77.118590
P2	14.162145	77.118502	PA2	14.162156	77.118492
P3	14.161992	77.118402	PA3	14.162000	77.118391
P4	14.161840	77.118303	PA4	14.161848	77.118290
P5	14.161692	77.118197	PA5	14.161701	77.118185
P6	14.161548	77.118084	PA6	14.161555	77.118073
P7	14.161453	77.117927	PA7	14.161464	77.117921
P8	14.161350	77.117772	PA8	14.161364	77.117767
P9	14.161290	77.117598	PA9	14.161304	77.117593
P10	14.161229	77.117431	PA10	14.161240	77.117421
P11	14.161173	77.117250	PA11	14.161185	77.117242
P12	14.161078	77.117095	PA12	14.161088	77.117084
P13	14.160970	77.116943	PA13	14.160984	77.116941
P14	14.160977	77.116758	PA14	14.160993	77.116758
P15	14.160984	77.116572	PA15	14.160998	77.116572
P16	14.161010	77.116389	PA16	14.161022	77.116393
P17	14.161076	77.116216	PA17	14.161088	77.116222
P18	14.161155	77.116050	PA18	14.161167	77.116056
P19	14.161199	77.115880	PA19	14.161213	77.115879
P20	14.161180	77.115697	PA20	14.161192	77.115695
P21	14.161175	77.115651	PA21	14.161188	77.115657

NEW PROPOSAL FOR ADDITIONAL USAGE OF FOREST LAND WHICH IS NOT APPLIED IN ONLINE WHICH IN SITE SPECIFICATION

APPROACH ROAD ALONG THE PIPE LINE ALIGNMENT					
S.NO	LATITUDE	LONGITUDE	S.NO	LATITUDE	LONGITUDE
R1	14.162275	77.118630	P1	14.162298	77.118602
R2	14.162120	77.118527	P2	14.162145	77.118502
R3	14.161977	77.118425	P3	14.161992	77.118402
R4	14.161828	77.118326	P4	14.161840	77.118303
R5	14.161676	77.118218	P5	14.161692	77.118197
R6	14.161529	77.118110	P6	14.161548	77.118084
R7	14.161425	77.117943	P7	14.161453	77.117927
R8	14.161325	77.117781	P8	14.161350	77.117772
R9	14.161265	77.117607	P9	14.161290	77.117598
R10	14.161202	77.117456	P10	14.161229	77.117431
R11	14.161146	77.117267	P11	14.161173	77.117250
R12	14.161056	77.117116	P12	14.161078	77.117095
R13	14.160926	77.116948	P13	14.160970	77.116943
R14	14.160943	77.116751	P14	14.160977	77.116758
R15	14.160952	77.116571	P15	14.160984	77.116572
R16	14.160968	77.116374	P16	14.161010	77.116389
R17	14.161036	77.116193	P17	14.161076	77.116216
R18	14.161090	77.116018	P18	14.161155	77.116050
R19	14.161119	77.115886	P19	14.161199	77.115880
R20	14.161106	77.115713	P20	14.161180	77.115697
R21	14.161099	77.115618	P21	14.161175	77.115651

MBR 02 BOUNDARY		
S.L No	Latitude	Longitude
1	14.161223	77.115672
2	14.161364	77.115331
3	14.161031	77.115186
4	14.160890	77.115527

LEGEND	
PIPE LINE IN FOREST	
PIPE LINE IN NON FOREST	



AREA STATEMENT	
FOREST AREA = 0.382 Hectare	
NON FOREST AREA = 0.000 Hectare	

PROJECT :	Laying of Pipe line and construction of water tanks in Bellary Forest Division, Chitradurga Forest division and Tumakuru Forest Division for Providing Drinking Water facility to Rural Habitations of Billary, Chitradurga & Tumakuru Districts
USER AGENCY	SUPERINTENDING ENGINEER, BEANGALUR CIRCLE, RURAL DRINKING WATER & SANITATION DEPARTMENT (RDW & SD)
GOOGLE MAP OF THIMALAPURA VILLAGE WITH SURVEY NO AND FOREST AREA DETAILS	
SUPERINTENDING ENGINEER	
DRAWING No.	SHEET: A2 02 OF 02 REVISION:
RELEASED FOR <input type="checkbox"/> PRELIMINARY <input type="checkbox"/> TENDER <input type="checkbox"/> INFORMATION <input checked="" type="checkbox"/> APPROVAL <input type="checkbox"/> CONSTRUCTION	