



No. F42J12
Scale 1:50,000

F42J7 (41E/7)	F42J11 (41F/11)	F42J15 (41F/15)
F42J8 (41F/8)	F42J12 (41F/12)	F42J16 (41F/16)
F42P5 (41G/5)	F42P9 (41G/9)	F42P13 (41G/13)

भारतीय सर्वेक्षण विभाग SURVEY OF INDIA

1st Edition 2010. Price : Rs. 50/-

CONVENTIONAL SYMBOLS

Express highway, with toll, with bridge, with distance stone	20
Roads, metalled, according to importance	
Roads, double carriageway, according to importance	
Unmetalled road, Cart-track, Pack-track with pass, Foot-path	
Streams, with track in bed, undrained, Canal	
Dams, masonry or rock-filled, earthwork, Weir	
River, dry with water channel, with island & rocks, Tidal river	
Submerged rocks, Shoal, Swamp, Reeds	
Wells, lined, unlined, Tube-well, Spring, Tanks, perennial, dry	
Embankments, road or rail, bank, Broken ground	
Railways, broad gauge, double, single with distance stone, under constn.	
Railways, other gauges, double, single with distance stone, do.	
Mineral line or tramway, Kin. Cutting with tunnel	
Contours with sub-features, Rocky slopes, Cliffs	
Sand features (Wind, Island Hills) (Permanent), (Seasonal) (Shifting)	
Towns or Villages, inhabited, deserted, Fort	
Huts, permanent, temporary, Tower, Antiquities	
Temple, Chhatra, Church, Mosque, Ulgah, Tomb, Graves	
Lighthouse, Lightship, Buoy, lighted, unlighted, Anchorage	
Mine, Vine on trellis, Grass, Scrub	
Plains, papyrus, other, Plantain, Conifer, Bamboo, Other trees	
Areas, cultivated, wooded, Surveyed tree	
Boundary, international	
state, demarcated, undemarcated	
district, subdivision, tahsil or taluk, forest	
Boundary pillars, surveyed, unlocated	
Heights, triangulated station, point, approximate	200 200 200
Bandwidth, geodetic, tertiary, canal	BM 63-3 BM 63-3
Post office, Overhead tank	
Rail house or inspection bungalow, Circuit house, Police station	
Camping ground, Forest, reserved, protected	RF PF
Spaced names, administrative, locality or tribal	KIKRI NAGA
Hospital, Dispensary, Veterinary, Hospital / Dispensary	
Aerodrome, Heliport, Tourist site	
Power line, with pylons surveyed, with poles unsurveyed	

NOTES :-

Heights and Contours have not been shown.
A relative height, Δ , represents the approximate height, in metres, between the top and bottom of a steep slope.
Tanks, shown dry in this area usually contain water from July to October.
In areas, where no tube-wells exist, cultivation is periodic and dependent on rainfall.

COMPILATION INDEX

A

Projection - UTM Datum - WGS 84

Magnetic Variation from True North about $\frac{1}{2}^{\circ}$ West in 2005.
(Decreasing by about $1'$ annually)

1:50,000

Metres 1000 500 0 2 3 Kilometres

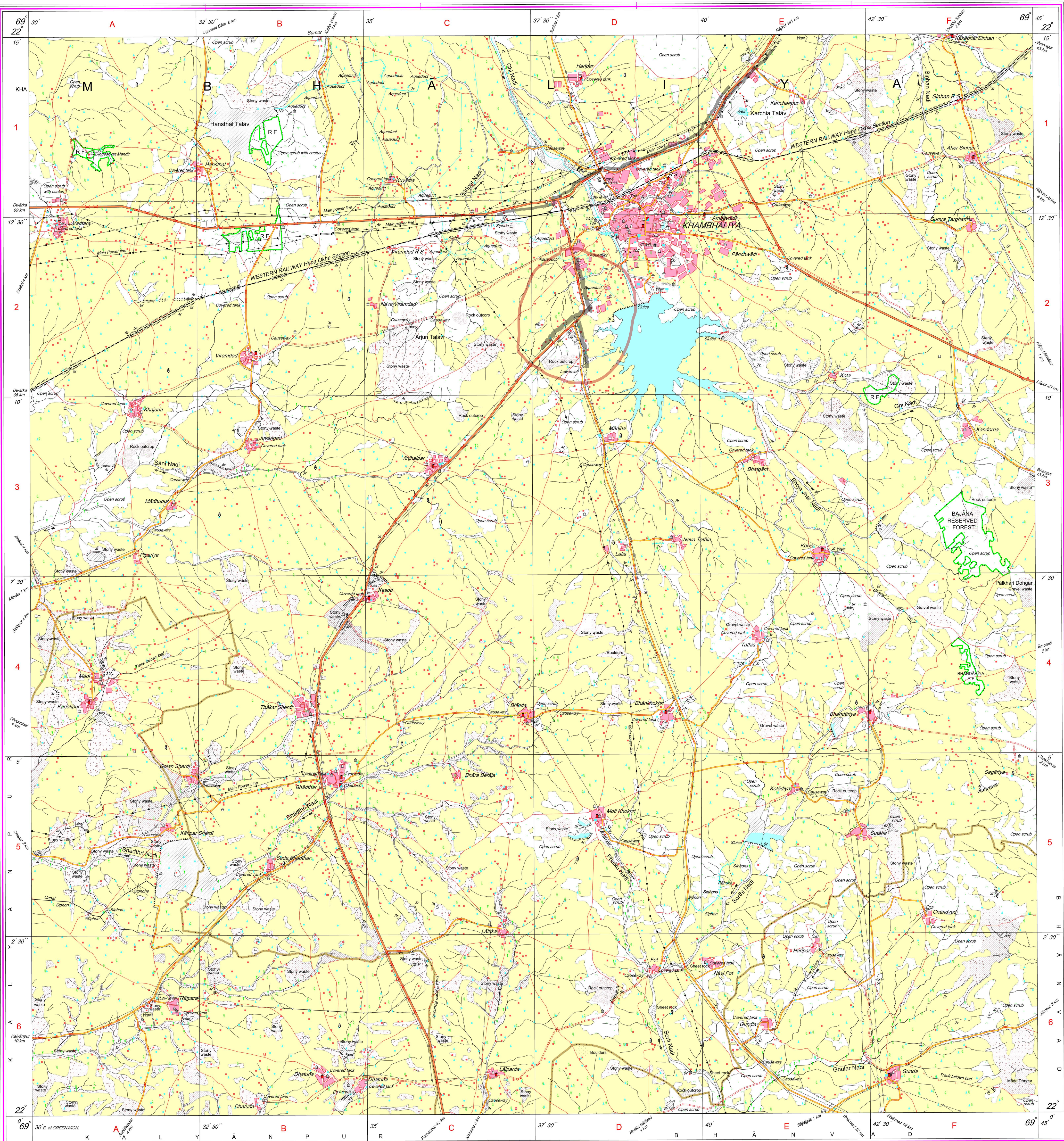
For further details about this map, please contact

Director
Gujarat, Daman & Diu Geo-Spatial Data Centre
Survey of India, Sector-10 (A)
Gandhinagar.

WEBSITE - www.surveyofindia.gov.in

Reproduction in whole or part by any means is prohibited
without the written permission of Survey of India, the
National Mapping Agency.

GOVERNMENT OF INDIA COPYRIGHT, 2010.



REG. No. -SP/G D/10 (GDAO GDC-150,000)

भारत के महासर्वेक्षक के निदेशन में प्रकाशित,
Published under the direction of Surveyor General of India,
Survey of India, Hattibankala Estate, Post Box No.37, Dehra Dun-248001 (Uttarakhand)
Department of Science & Technology, Government of India.

PRINTED AT THE SOUTHERN PRINTING GROUP OF SURVEY OF INDIA.