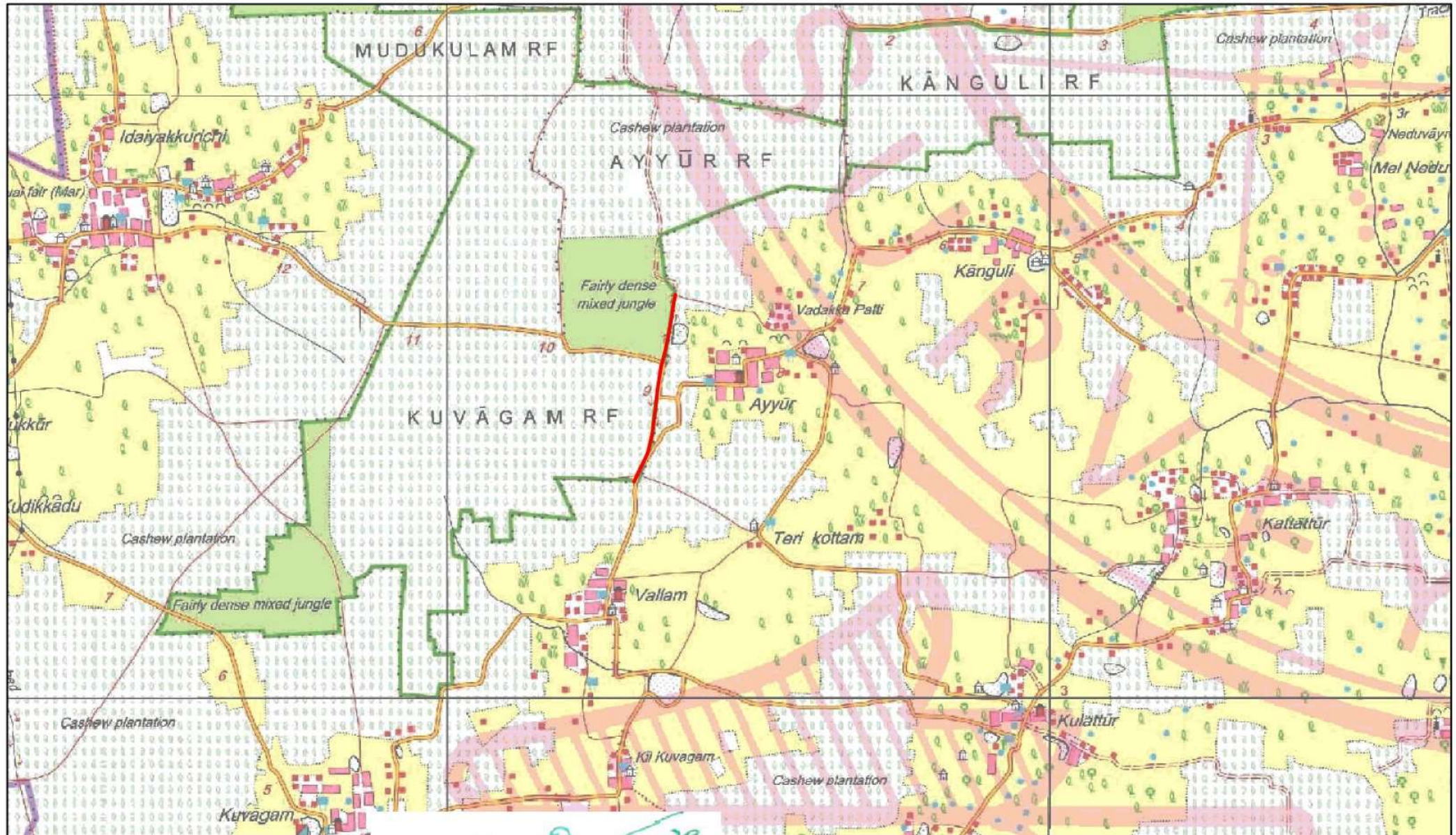



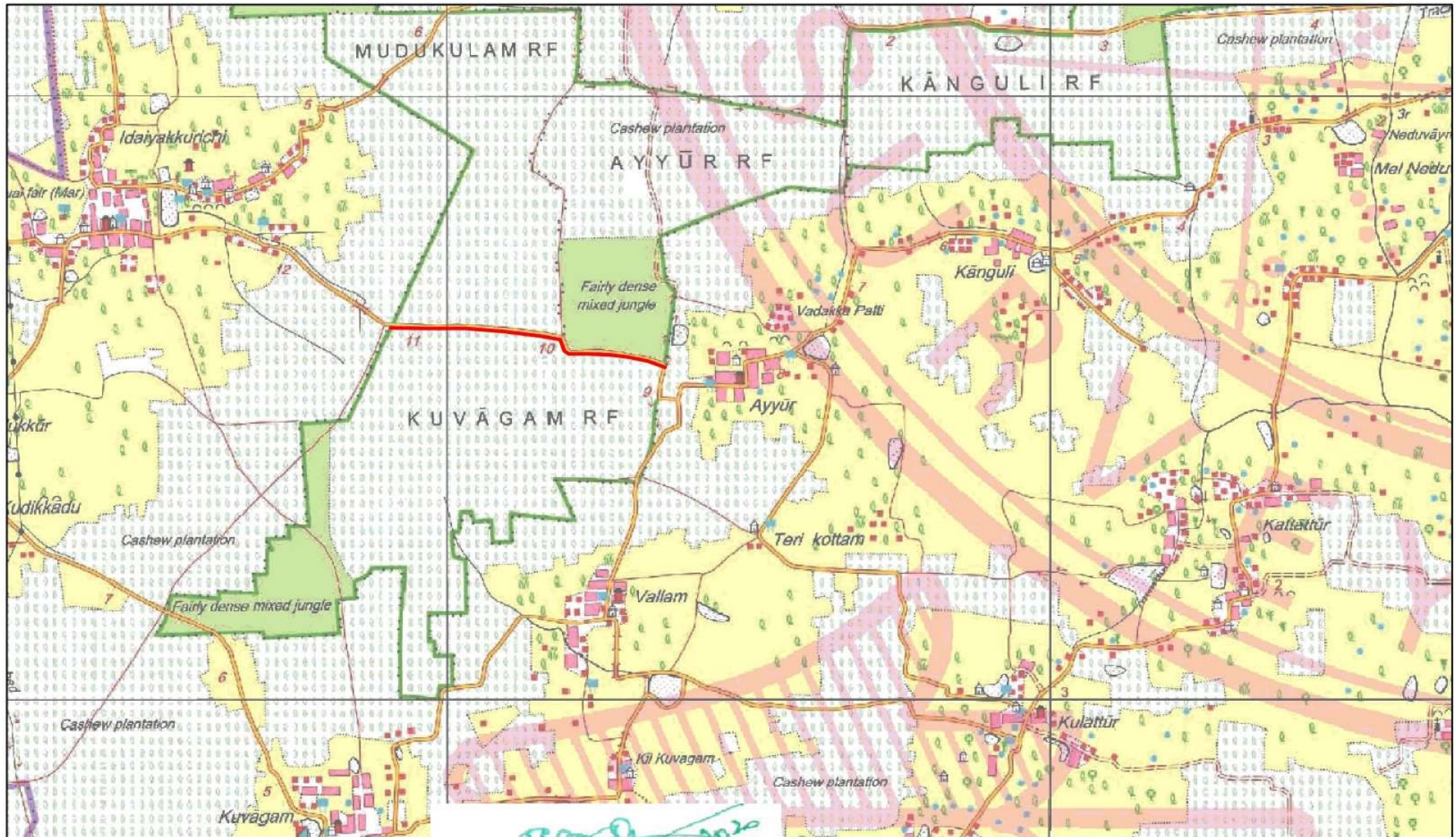
**Location in SI Map of proposed 11 KV Feeder (HT) Electrical Post Erection works from Ayyur to
Vallam and Idayakuruchi villages across Ayyur RF and Kuvagam RF
by RII/Sendurai, Ariyalur District, Ariyalur Forest Division
Total Area - 0.1657 (Length - 1553 mt x Width - 1.0668 mt.)**




B.S. 2020
**ASSISTANT ENGINEER,
O&M RURAL 2,
TANGEDCO,
SENDURAI 621 714**

 **Proposed EB Post route**

Location in SI Map of proposed 11 KV Feeder (HT) Electrical Post Erection works from Ayyur to
Vallam and Idayakuruchi villages across Kuvagam RF
by RII/Sendurai, Ariyalur District, Ariyalur Forest Division
Total Area - 0.2340 (Length - 2193 mt x Width - 1.0668 mt.)



13.5.2020
ASSISTANT ENGINEER,
O&M RURAL 2,
TANGEDCO,
SENDURAI 621 714

 Proposed EB Post route